

PALEOGENEOLOGIC MAP OF THE RAILROAD VALLEY AREA, NYE COUNTY, NEVADA

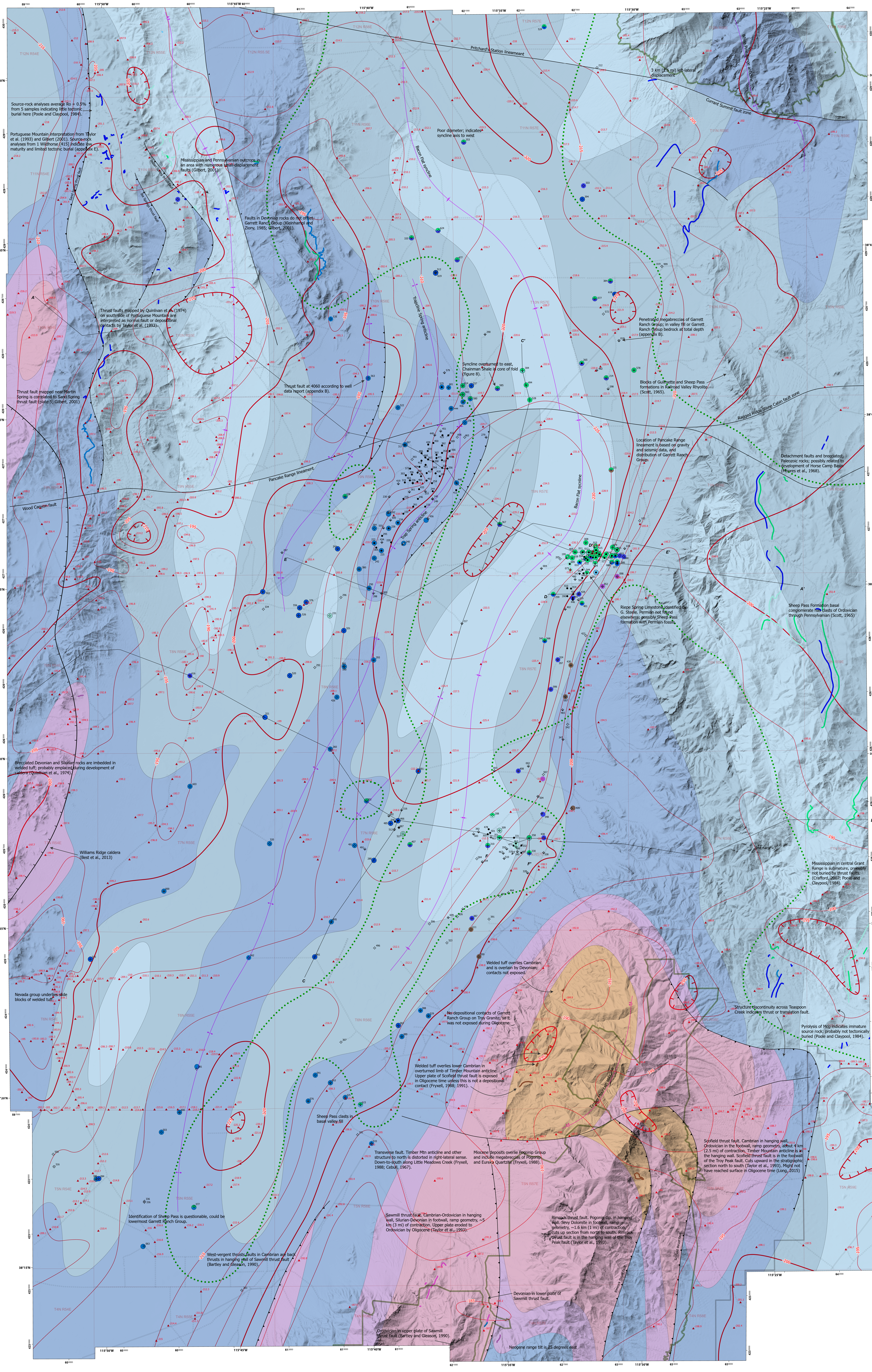
Early Paleogene Time with Bouguer Gravity 2.67

Plate 3 of 5

Don E. French

Gianni Exploration, LLC, Billings, MT

2024



MAP SYMBOLS

Paleogeologic contact

- Normal fault: Solid where certain and location accurate. Ball on downthrown block.
- Thrust fault: Solid where certain and location accurate. Sawtooth on upper (downthrown) higher plate.
- Bouguer gravity contours: ± 5 mgal, both on closed loops. After Paces, 1997, and Smith et al., 1999.
- Caldera margin
- Anticline: Solid where certain and location accurate.
- Overturned anticline: Solid where certain and location accurate.
- Syncline: Solid where certain and location accurate.
- Overturned syncline: Solid where certain and location accurate.
- Sheep Pass fault
- Gravity Station: Bouguer value shown in mgal

Well Symbol

- Well reference number (appendix B)
- Dry hole
- Dry hole gas show
- Dry hole oil & gas show
- Dry hole oil show
- Injection/disposal
- Oil well
- Oil well plugged

Penetration Key for Wells Significant to Paleogeologic Interpretation

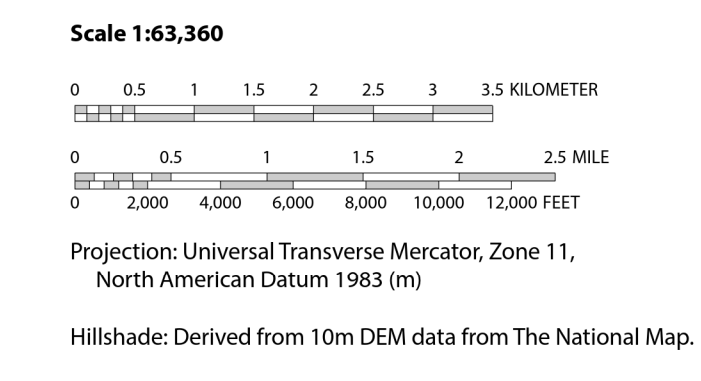
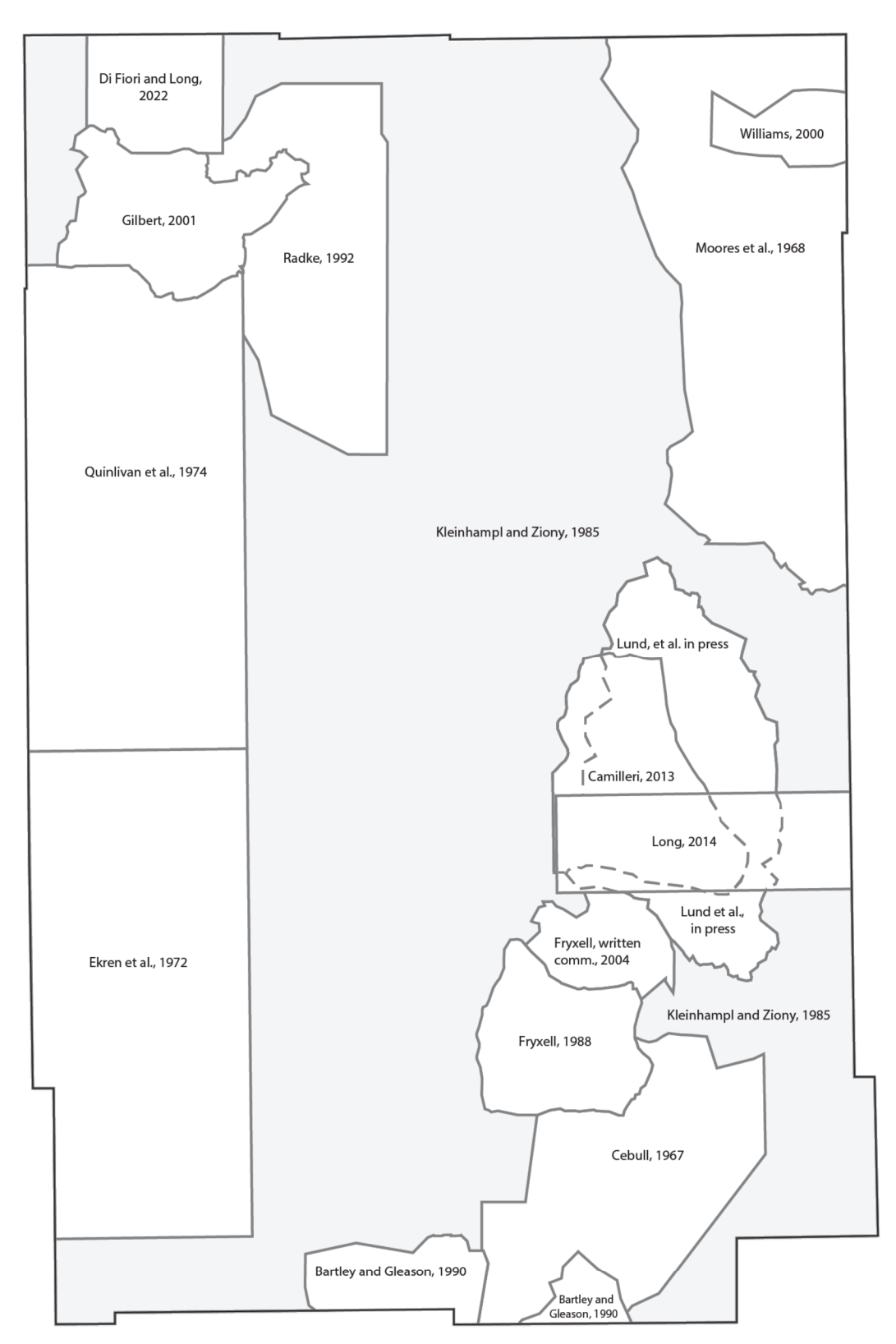
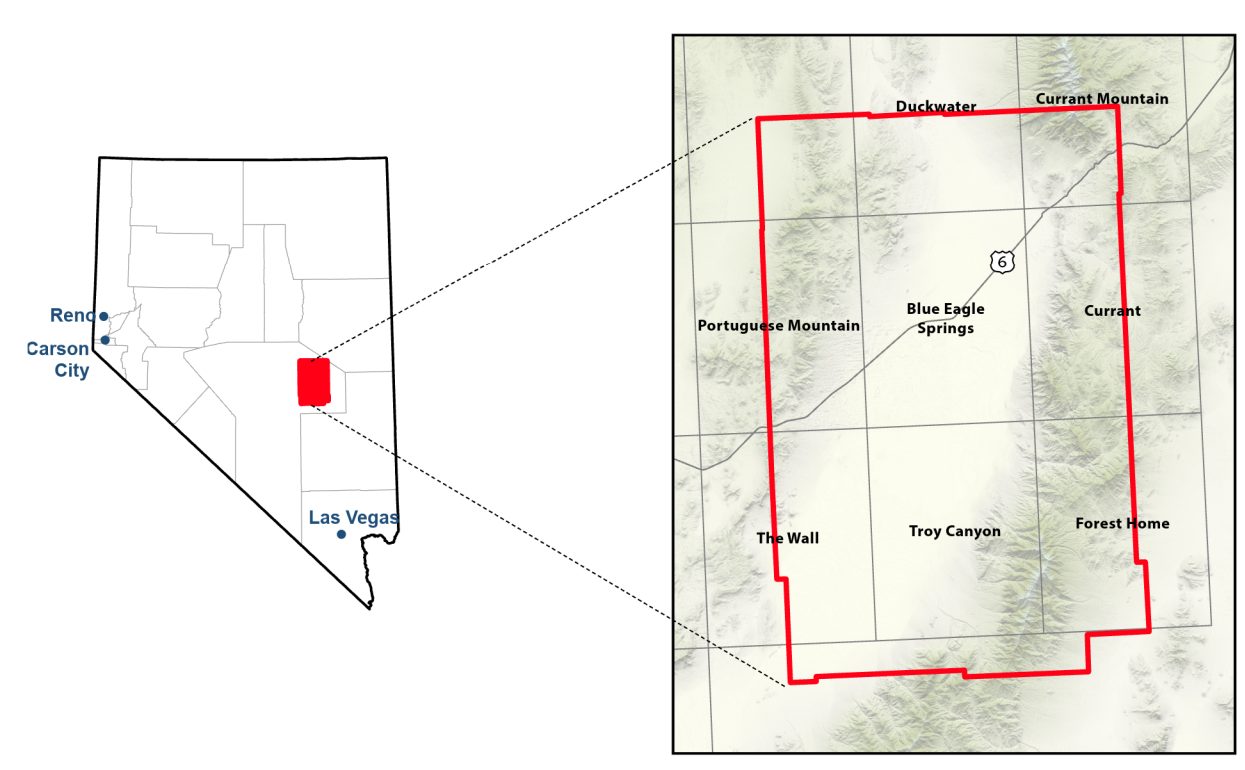
- Sheep Pass Formation
- Permian
- Pennsylvanian
- Mississippian
- Devonian
- Silurian
- Ordovician
- Cambrian
- Penetrated Sheep Pass Formation and Paleozoic, half circles
- Penetrated Garrett Ranch Group, black outline

Outcrop Control for Paleogeologic Interpretation
Subcrop to Sheep Pass Formation or Garrett Ranch Group

- Sheep Pass Formation
- Permian
- Pennsylvanian
- Mississippian
- Devonian
- Silurian
- Ordovician
- Cambrian

Paleogeologic Units

- Pennsylvanian
- Mississippian
- Devonian
- Silurian
- Ordovician
- Cambrian



Suggested citation:
French, Don E., 2024, Paleogeologic map of the Railroad Valley area, Nye County, Nevada, Nevada Bureau of Mines and Geology Report 60, scale 1:63,360, 102 p.

Nevada Bureau of Mines and Geology
Nye County, Nevada
1075 Raggio Way
Billings, MT 59102
307-624-8700
www.nbgm.gov

Field and lab investigations were done during 1997-2001.

FIELD SUPERVISOR
Don E. French
OFFICE SUPERVISOR
Robert S. Silliman
SCIENCE CENTER SUPERVISOR
Robert S. Silliman

COMPILED AND DRAWN BY
Jennifer Ryan
CONTOURING BY
Don E. French
EDITED BY
Robert S. Silliman
FIELD ASSISTANT
Jennifer Ryan

SYMBOLS AND ABBREVIATIONS
Adapted from Don E. French
Published by Nevada Bureau of Mines and Geology
Copyright © 2024, Nevada Bureau of Mines and Geology

This map was prepared as an electronic publication. Quality assurance and proofreading were performed by the author and approved by the Chief Geologist. Symbols, colors, and graphics may not be reproduced without permission.