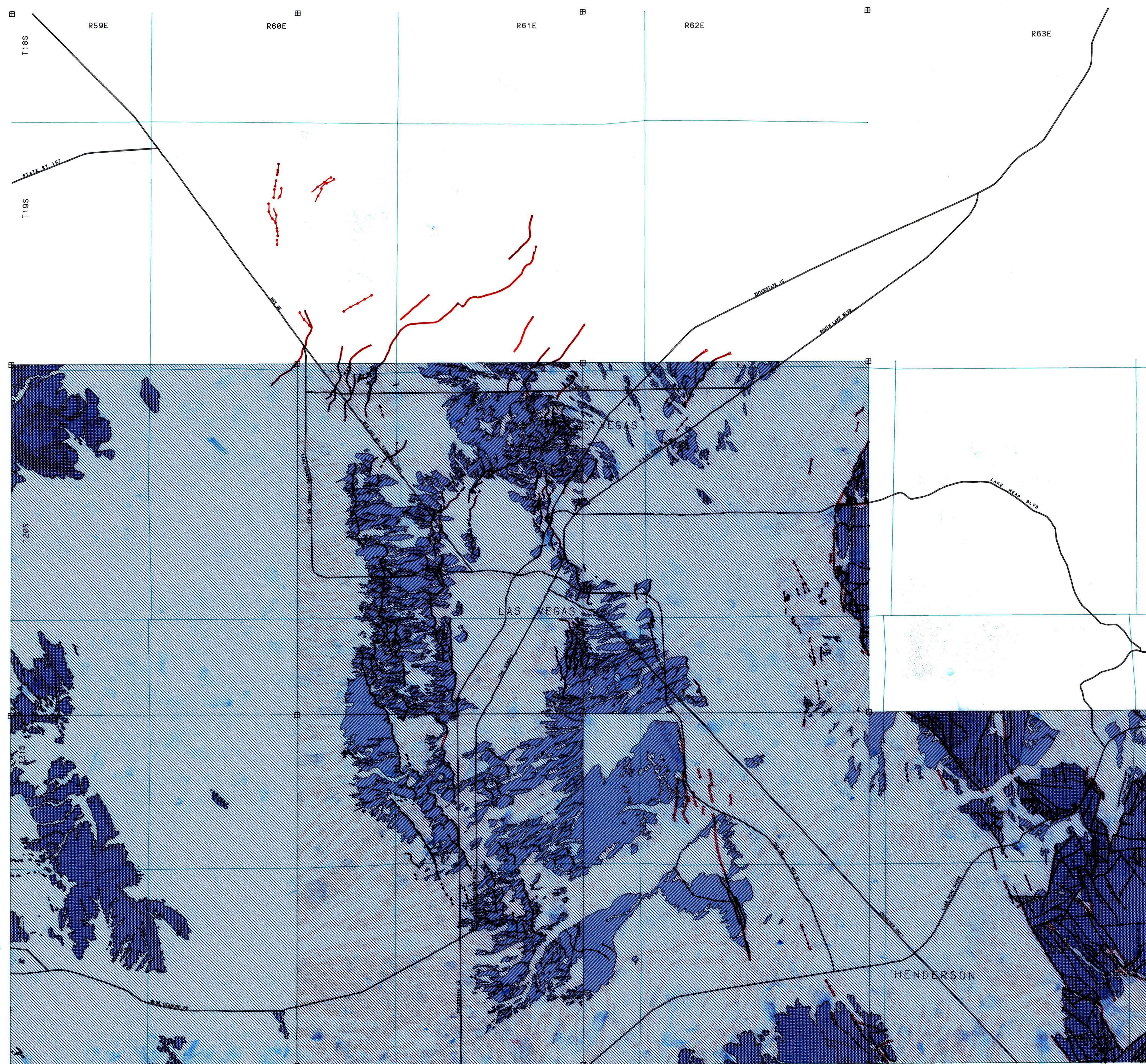








LAS VEGAS VALLEY  
SUBSIDENCE PROJECT

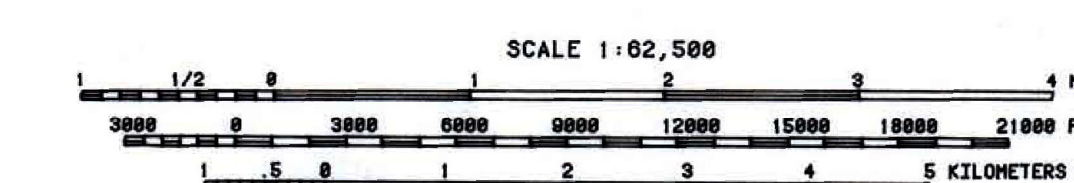
LAS VEGAS  
VALLEY  
GEOLOGY



-  Alluvial sand and gravel, coarse-grained
-  Fine-grained basin fill, silt & clay (includes artificial fill)
-  Bedrock
-  Known faults
-  Inferred faults
-  Concealed faults

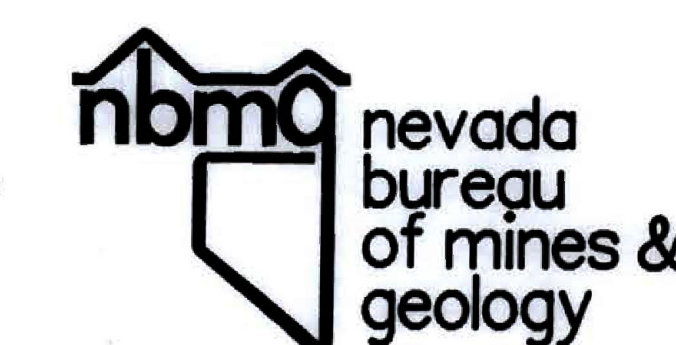
See individual 7.5' quadrangles for detailed information.

Compiled from: Bingler (1977), Bell and Smith (1980), Matti and Bachhuber (1985), Matti et al. (1987), Matti et al. (in prep.) Carr (in prep.)



Index to quadrangles containing detailed (1:24,000 scale) data. Corner marks shown on map.

TILE SPRINGS PARK	GASS PEAK SW	VALLEY	APEX
BLUE DIAMOND NE	LAS VEGAS NW	LAS VEGAS NE	FRENCHMAN MOUNTAIN
BLUE DIAMOND SE	LAS VEGAS SW	LAS VEGAS SE	HENDERSON



GIS-ARC/INFO Database Development and Digital Cartography by:  
 Lindsay G. Christensen  
 GIS - Geologist  
 Ronald H. Heas  
 Geologic Information Specialist  
 Hoang N. Hong  
 GIS - Digitizer  
 Gary L. Johnson  
 GIS - Processor  
 David A. Jones  
 GIS - Geologist  
 Compiled June 1989