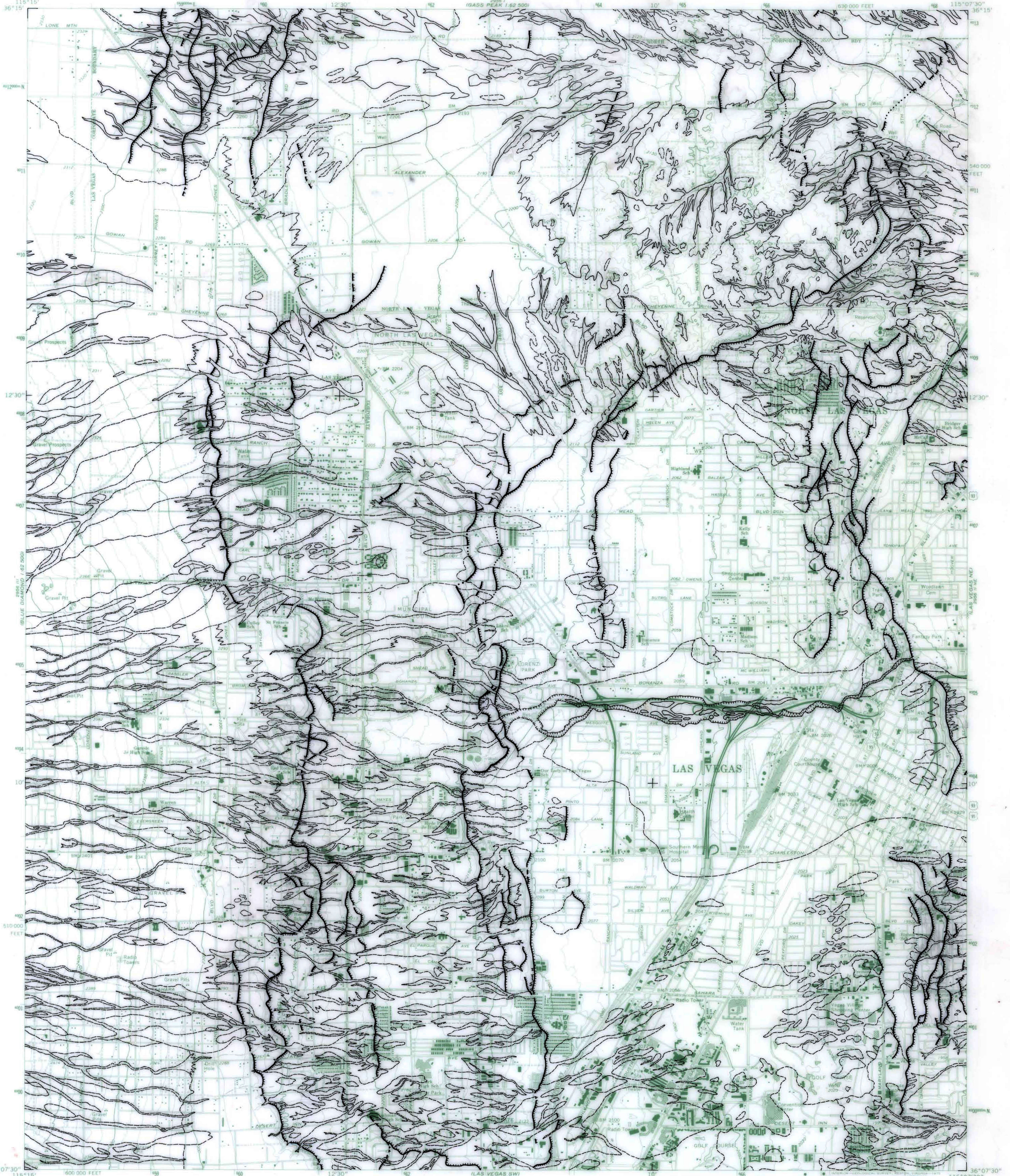
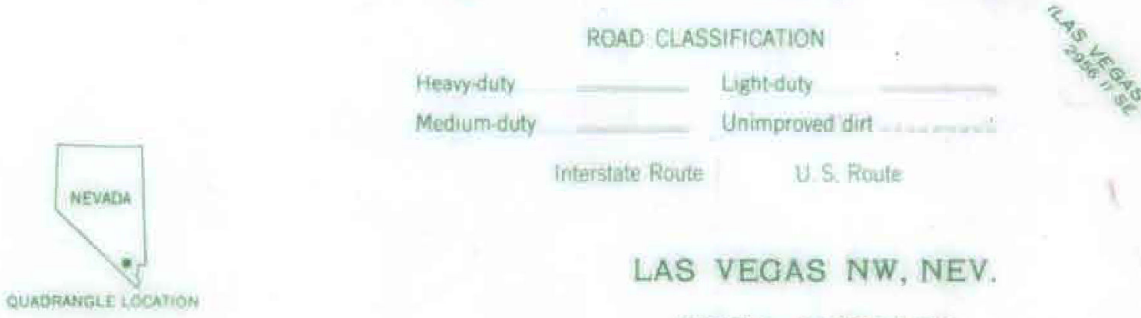
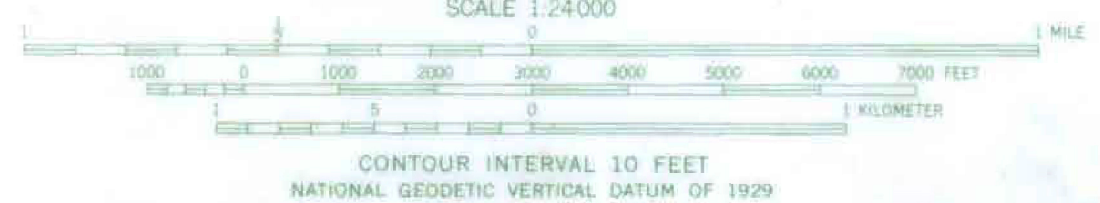


UNITED STATES  
DEPARTMENT OF THE INTERIOR  
GEOLOGICAL SURVEY



Mapped, edited, and published by the Geological Survey  
Control by USGS and USC&GS  
Topography by photogrammetric methods from aerial  
photographs taken 1965. Field checked 1967  
Polyconic projection. 1927 North American datum  
10,000-foot grid based on Nevada coordinate system, east zone  
1000-meter Universal Transverse Mercator grid ticks,  
zone 11, shown in blue  
Red tint indicates areas in which only landmark buildings are shown  
Fine red dashed lines indicate selected fence lines  
This map lies within a subsidence area  
Revisions shown in purple compiled from aerial photographs  
taken 1973. This information not field checked  
Purple tint indicates extension of urban areas



**PRELIMINARY GEOLOGIC MAP OF  
THE LAS VEGAS NW QUADRANGLE**

FOR SALE BY U.S. GEOLOGICAL SURVEY, DENVER, COLORADO 80225, OR RESTON, VIRGINIA 22092  
A FOLDER DESCRIBING TOPOGRAPHIC MAPS AND SYMBOLS IS AVAILABLE ON REQUEST

Base from U.S. Geological Survey  
Las Vegas NW, 1967, photorevised 1973

By  
**Jonathan C. Matti<sup>1</sup> and Douglas M. Morton<sup>1</sup>**

This map is preliminary and has not been reviewed  
for conformity with U.S. Geological Survey editorial  
standards. Mapping is based on interpretation of  
aerial photographs; field check of geology has not  
been completed.

<sup>1</sup> U.S. Geological Survey, Menlo Park, California