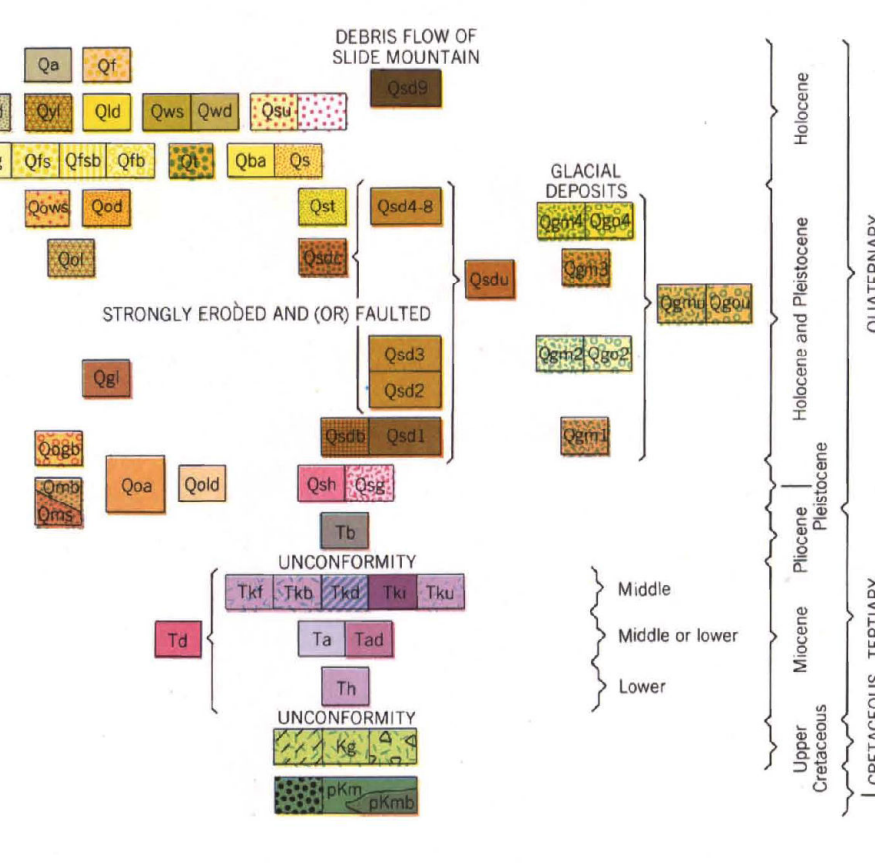


ENVIRONMENTAL SERIES WASHOELAKE AREA

WASHOECITY FOLIO GEOLOGIC MAP



Artificial fill, Flood deposits, Debris flows, Glacial moraine, etc. Descriptions of geological units and their characteristics.

GLACIAL DEPOSITS, BEDROCK UNITS, Contact, Fault, Bedding, Foliation, Lamination, Joints, etc. Detailed descriptions of geological features and symbols.

By R.W. Tabor and S. Ellen, 1975. U.S. Geological Survey. Mapped 1973-74; assisted by M. Clark and E. Brooks. Includes scale bars and contact information.