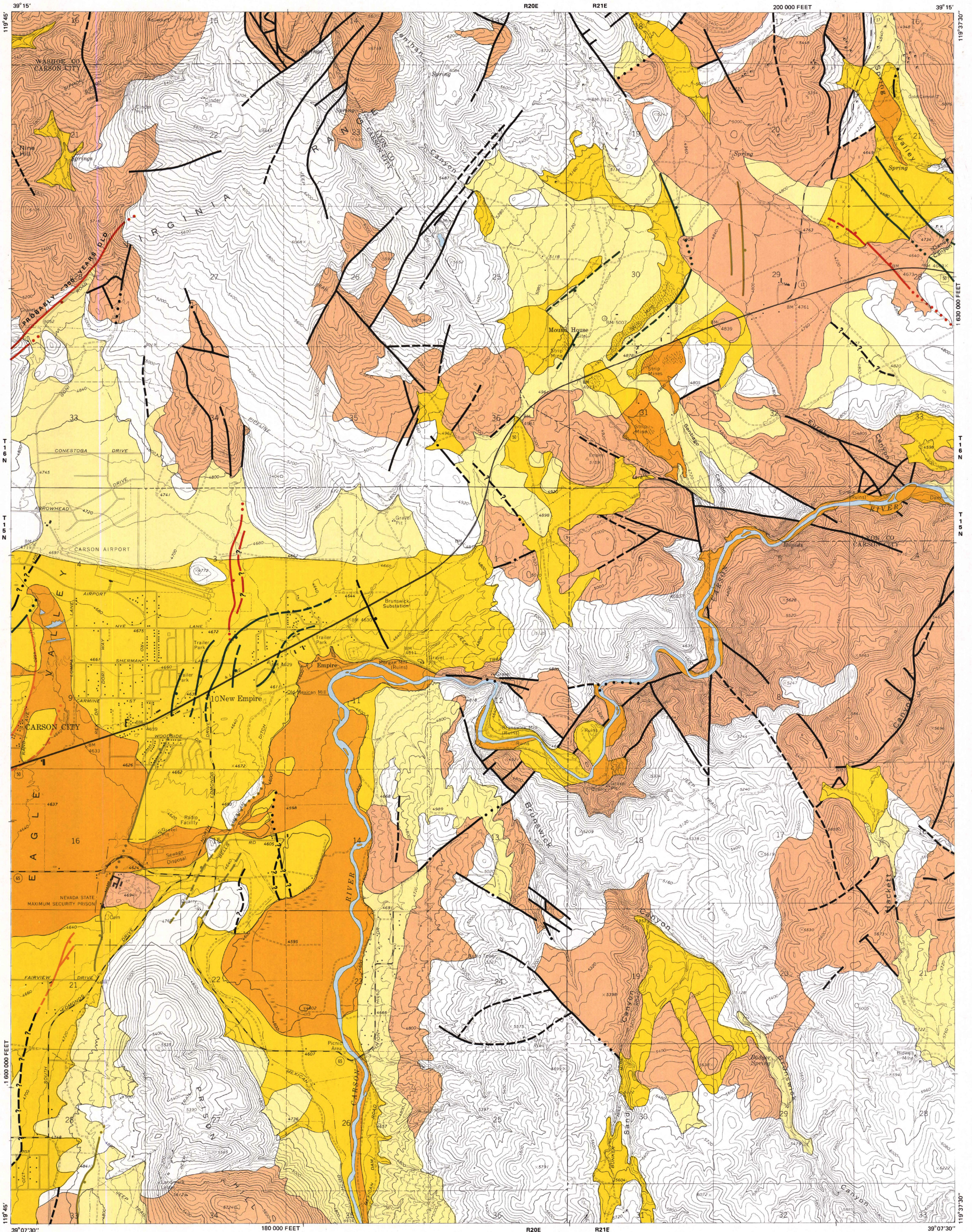


NEW EMPIRE QUAD

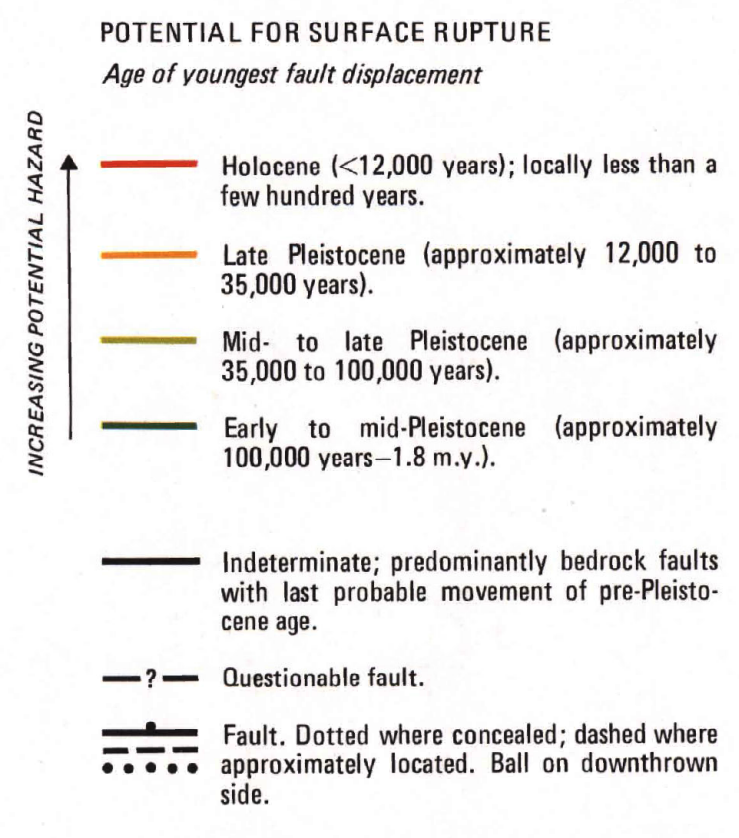
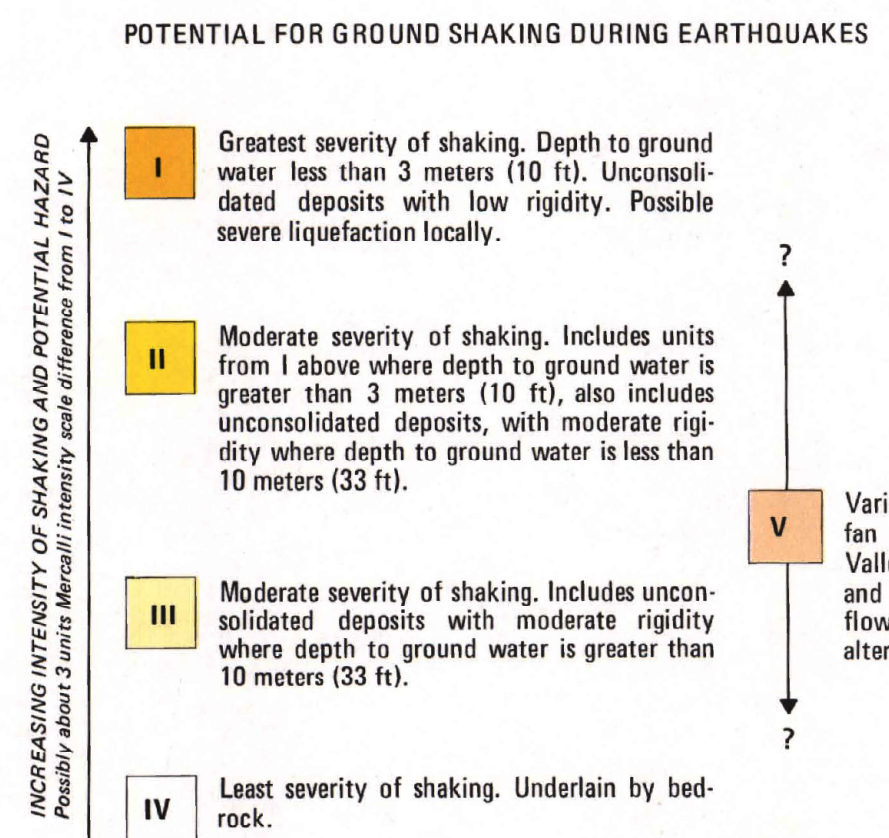


EARTHQUAKE HAZARDS

The hazards shown on this map are based upon current data available. Shaking characteristics are inferred from interpretations of geologic, seismic velocity, soils engineering, and ground-water information. Surface rupture potentials are inferred from generalized geologic and soils (weathering profile) information.

These data are intended to be used only as a generalized guide and will be subject to change as more data become available.

Assessment of seismic hazard potential for individual sites must be based upon detailed engineering and seismic studies; such assessments should not be inferred from this map.



John W. Bell and Dennis T. Trexler, 1979

Depth to ground water based on preliminary general hydrologic map, New Empire quadrangle (T. Katzer, written commun., 1979).

Geology from Binger (1977) Geologic map, New Empire quadrangle, Nevada Bureau of Mines and Geology Map 59.

Research for this map supported in part by U. S. Geological Survey Earthquake Hazards Reduction Grant No. 14-08-0001-G-494.

Scale 1:24,000

0 0.5 1 KILOMETER
0 1000 METERS

0 0.5 1 MILE
0 2000 4000 FEET

CONTOUR INTERVAL 40 FEET
DOTTED LINES ARE 20-FOOT CONTOURS
DATUM IS MEAN SEA LEVEL

Topographic base from U. S. Geological Survey New Empire 7 1/2' quadrangle, 1968
Cartography by Susan L. Nichols

NEVADA BUREAU OF MINES AND GEOLOGY
UNIVERSITY OF NEVADA
RENO, NEVADA 89567
ORDER MAP NO. 18i -