

GEOLOGIC MAP OF THE SIXMILE CANYON QUADRANGLE, WHITE PINE COUNTY, NEVADA

Jeffrey Lee^{1,2}, Scott Johnston^{1,3}, and Elizabeth L. Miller¹

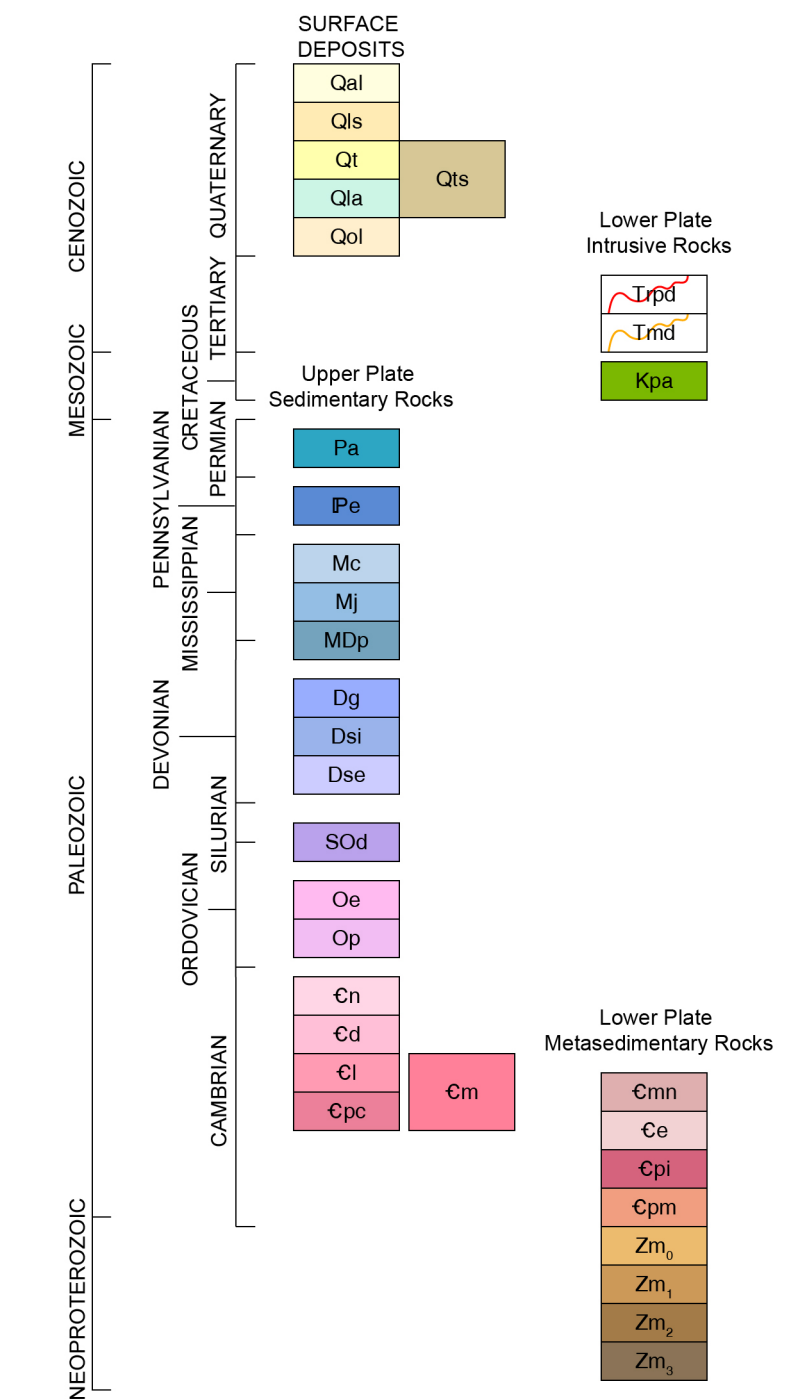
¹Department of Earth & Planetary Sciences, Stanford University

²Department of Geophysics, Colorado School of Mines

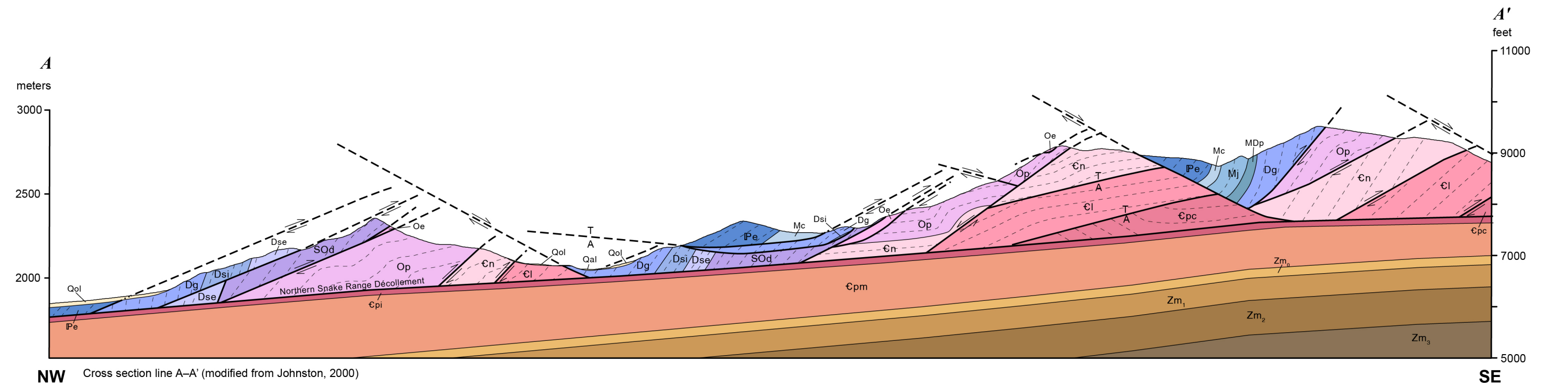
³Physics Department, California Polytechnic State University

2023

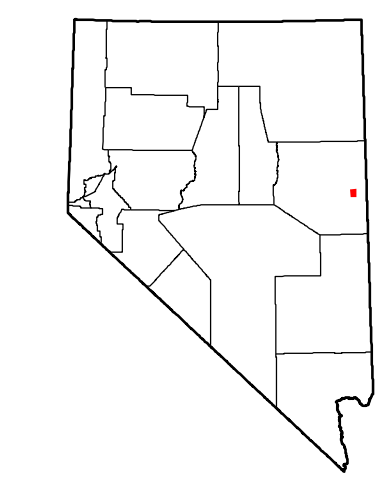
- Stratified Rocks**
- Qal Alluvium (Quaternary)
 - Qls Landslide deposits (Quaternary)
 - Qt Talus (Quaternary)
 - Qts Talus and landslide deposits, undivided (Quaternary)
 - Qla Lacustrine and alluvial deposits, undivided (Quaternary)
 - Qol Older alluvium (Quaternary)
 - Pa Arcturus Formation (Permian)
 - Pe Ely Limestone (Pennsylvanian)
 - Mc Chainman Shale (Mississippian)
 - Mj Joana Limestone (Mississippian)
 - MDp Pilot Shale (Mississippian-Devonian)
 - Dg Guilmette Formation (Devonian)
 - Dsi Simonson Dolomite (Devonian)
 - Dse Sevy Dolomite (Devonian)
 - SOD Laketown and Fish Haven Dolomites, undivided (Silurian and Ordovician)
 - Oe Eureka Quartzite (Ordovician)
 - Op Pogonip Group, undivided (Ordovician)
 - Cn Notch Peak Formation (Upper Cambrian)
 - Cd Dunderberg Shale (Upper Cambrian)
 - Cl Lincoln Peak Formation (Middle Cambrian)
 - Cpc Pole Canyon Limestone (Middle Cambrian)
 - Cm Limestone, undivided (Middle Cambrian)
 - Cmm Monte Neva Formation (Middle Cambrian)
 - Ce Eldorado limestone (Middle Cambrian)
 - Cpl Ploche Shale (Lower Cambrian)
 - Cpm Prospect Mountain Quartzite (Lower Cambrian)
 - McCoy Creek Group (Neoproterozoic) (in cross section only)
 - Zm1 Osceola Argillite
 - Zm2 Unit 1, quartzite
 - Zm3 Unit 2, quartzite and schist
 - Zm4 Unit 3, quartzite
- Intrusive Rocks**
- Trpd Rhyolite porphyry dikes (Tertiary)
 - Trmd Mafic dikes (Tertiary)
 - Kca Pegmatite and apatite (Cretaceous)



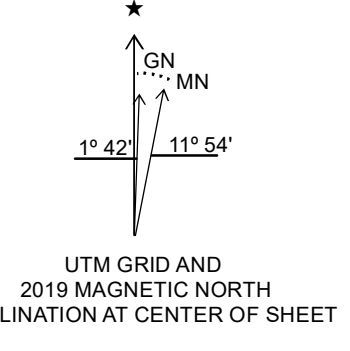
- Contact** Solid where certain and location accurate, dashed where approximately located, dotted where concealed, queried if identity or existence uncertain. In cross section, interpreted contacts beneath the profile are solid.
- Internal contact** Dash-double dot where approximately located.
- Normal fault** Solid where certain and location accurate, dashed where approximately located, dotted where concealed, queried if identity or existence uncertain. Showing dip direction and magnitude; ball on the hanging wall. Inclined slickenside showing bearing and plunge. In cross section, interpreted faults beneath the profile are solid, projected faults above the profile are dashed, arrows show relative motion. T/A show relative motion towards the viewer (T) and away from the viewer (A), respectively.
- Detachment fault** (Northern Snake Range Décollement) Solid where certain and location accurate, dashed where approximately located, dotted where concealed, queried if identity or existence uncertain. Hachures on upper plate.
- Thrust fault** Solid where certain and location accurate, dashed where approximately located, dotted where concealed. Sawtooth on the hanging wall.
- Bedding (in cross section only)**
- Anticline Solid where certain and location accurate.
 - Syncline Solid where certain and location accurate.
- Dike** Approximately located.
- Strike and dip of bedding**
- Inclined Overturned
 - Horizontal Vertical
- Strike and dip of metamorphic foliation**
- Inclined
- Bearing and plunge of stretching lineation**
- Inclined
- Bearing and plunge of intersection and stretching lineation**
- Inclined Horizontal
- Line of cross section** A-A'



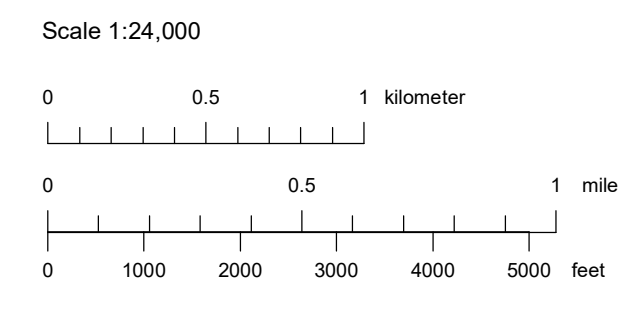
NW Cross section line A-A' (modified from Johnston, 2000) SE



See accompanying text for full unit descriptions and references for this map.



- Adjoining 7.5' quadrangle names
- | | | |
|---|---|---|
| 1 | 2 | 3 |
| 4 | 5 | 6 |
| 7 | 8 | 9 |
- 1 Third Butte West
 - 2 Third Butte East
 - 3 Mormon Jack Pass
 - 4 Yelland Dry Lake
 - 5 Sixmile Canyon
 - 6 Mount Moriah
 - 7 South Bastian Spring
 - 8 Sacramento Pass
 - 9 Old Mans Canyon



Projection: Universal Transverse Mercator, Zone 11, North American Datum 1983 (m)

Base map: U.S. Geological Survey Sixmile Canyon 7.5' quadrangle (2021)

Suggested citation:
Lee, J., Johnston, S., and Miller, E.L., 2023, Geologic map of the Sixmile Canyon quadrangle, White Pine County, Nevada, Nevada Bureau of Mines and Geology Open-File Report 2023-08, scale 1:24,000, 8 p.

Nevada Bureau of Mines and Geology
Mackay School of Earth Sciences and Engineering
University of Nevada, Reno

Field work done in Summers 1981, 1982, 1984, 1985, 1999; Fall 2021; Spring 2022.
Research supported by the U.S. Geological Survey, National Cooperative Geologic Mapping Program, under STATEMAP award number G21AC10873. The views and conclusions contained in this document are those of the authors and should not be interpreted as necessarily representing the official policies, either expressed or implied, of the U.S. Government.

OPEN-FILE REPORT
This report undergoes peer review.

Compilation by Jeffrey Lee, Scott Johnston, and Elizabeth Miller
Cartography and map production in ESRI ArcGIS v10.8 (GeMS) by Ryan G. Smith and Irene M. Edgerston
Cartographic and style review by Jennifer Mican
First Edition, August, 2023
Symbology (per FGCS-C12-013-2006)
Published by Nevada Bureau of Mines and Geology
© Copyright 2023 The University of Nevada, Reno. All Rights Reserved.
This map was printed on an electronic yellow paper from digital files. Color calibration may vary between electronic, printed, and physical versions on the same paper, and paper may change with time. Scale and coordinates may not be exact in every case.

For sale by:
Nevada Bureau of Mines and Geology
2175 Reggio Pkwy
Reno, Nevada 95912
ph. (775) 682-5760
www.nbrmg.org; nbrmg@unr.edu