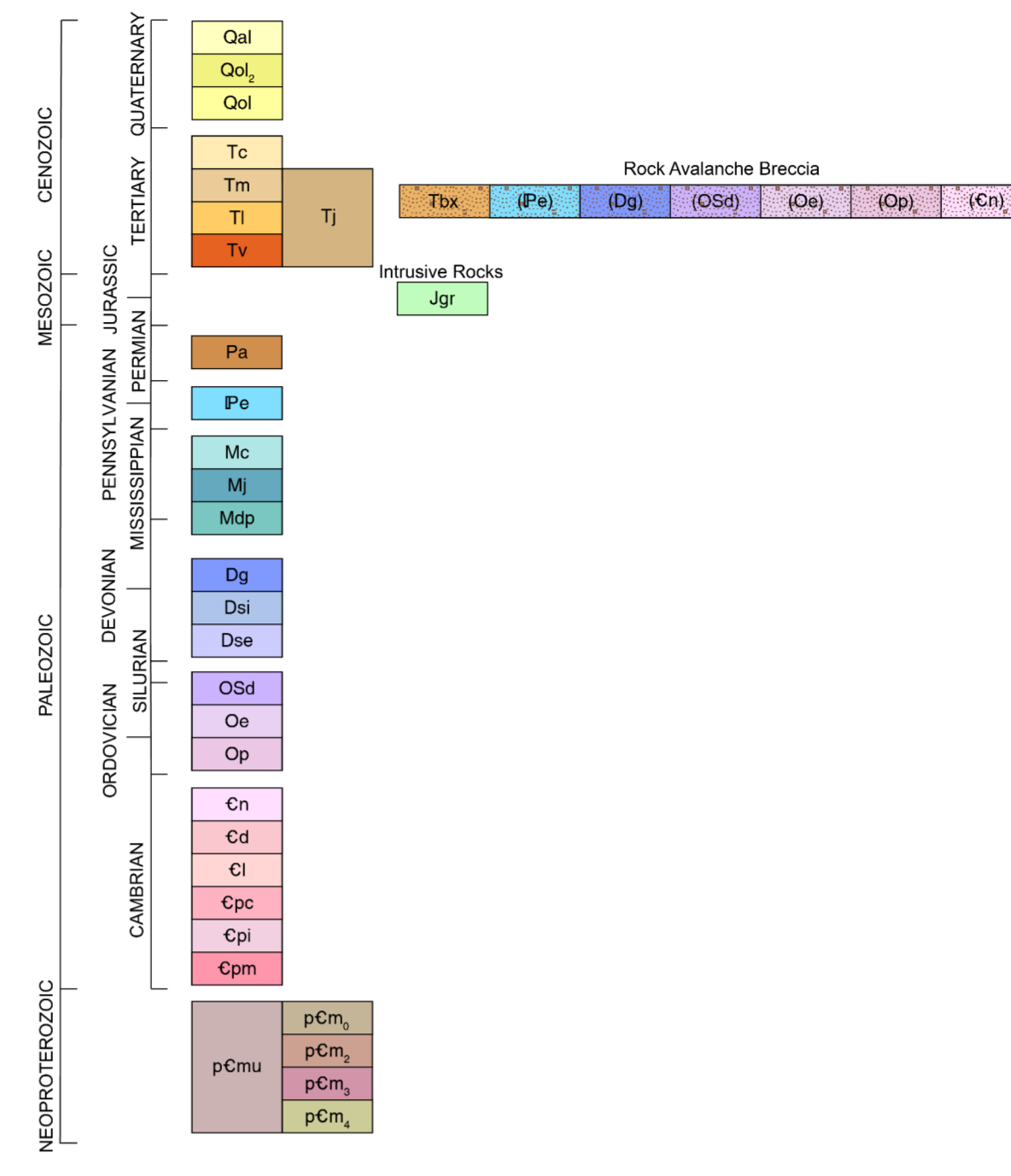


GEOLOGIC MAP OF THE SACRAMENTO PASS QUADRANGLE, WHITE PINE COUNTY, NEVADA

Elizabeth L. Miller¹, Cynthia M. Martinez¹, Scott Johnston²
¹Department of Earth & Planetary Sciences, Stanford University
²California Polytechnic State University
2023



Contact Solid where certain and location accurate, dashed where approximately located, dotted where concealed.

Key bed Dashed where approximately located.

Fault Solid where certain and location accurate, dashed where approximately located, dotted where concealed, queried if identity or existence uncertain.

Normal fault Solid where certain and location accurate, dashed where approximately located, dotted where concealed, queried if identity or existence uncertain. Showing dip; ball on downthrown side. In cross section approximately located faults shown as solid, arrows show relative motion.

Detachment fault (inferred continuation of the Northern Snake Range Detachment) Solid where certain and location accurate, dotted where concealed, queried if identity or existence uncertain. Hachures on upper plate.

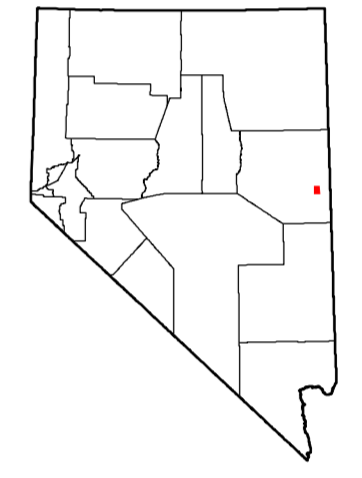
Oblique-slip fault Solid where certain and location accurate, dashed where approximately located, dotted where concealed, queried if identity or existence uncertain. Arrows show relative motion, ball on downthrown side.

Strike and dip of bedding
↗ Inclined ↘ Overturned

Strike and dip of metamorphic foliation
↗ Inclined

Line of cross section

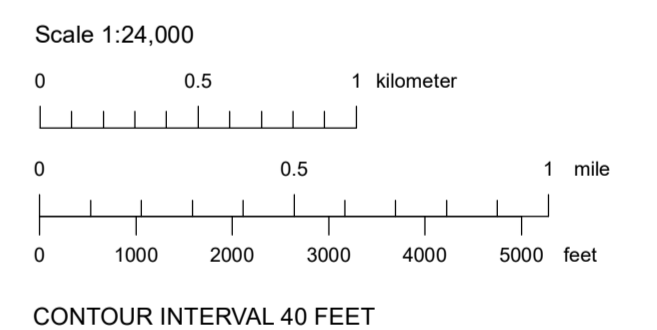
- STRATIFIED ROCK UNITS**
- Qal Active alluvium (Quaternary)
 - Qol Young alluvium (Quaternary)
 - Qol Older alluvium (Quaternary)
 - Tc Conglomerate (Tertiary)
 - Tm Marl (Tertiary)
 - Tl Limestone (Tertiary)
 - Tbx Rock-avalanche breccia (Tertiary)
 - (Pe) Block of Ely Limestone in Tertiary rock-avalanche breccia
 - (Dg) Block of Guilmette Formation in Tertiary rock-avalanche breccia
 - (OSd) Block of Fish Haven and Laketown Dolomites in Tertiary rock-avalanche breccia
 - (Op) Block of Eureka Quartzite in Tertiary rock-avalanche breccia
 - (Cp) Block of Pogonip Group in Tertiary rock-avalanche breccia
 - (Cn) Block of Notch Peak Formation in Tertiary rock-avalanche breccia
 - Tl Jasperite fault breccia (Tertiary?)
 - Tv Rhyodacite flows and subvolcanic intrusive bodies (Tertiary)
 - Pa Arcturus Formation (Permian)
 - Pe Ely Limestone (Pennsylvanian)
 - Mc Chainman Shale (Mississippian)
 - Ml Joana Limestone (Mississippian)
 - Mdp Pilot Shale (Mississippian and Upper Devonian)
 - Dg Guilmette Formation (Devonian)
 - Ds Simonson Dolomite (Devonian)
 - Dse Sevy Dolomite (Devonian)
 - OSd Fish Haven and Laketown Dolomites, undivided (Silurian and Ordovician)
 - Os Eureka Quartzite (Ordovician)
 - Op Pogonip Group (Ordovician)
 - Cn Notch Peak Formation (Upper Cambrian)
 - Cd Dunderberg Shale (Upper Cambrian)
 - Cl Lincoln Peak Formation (Upper Cambrian)
 - Cpc Pole Canyon Limestone (Middle Cambrian)
 - Cpl Pliche Shale (Lower Cambrian)
 - Cpm Prospect Mountain Quartzite (Lower Cambrian)
- NEOPROTEROZOIC MCCOY CREEK GROUP**
- pCmu McCoy Creek Group (Proterozoic)
 - pCm1 Osceola Argillite (Neoproterozoic)
 - pCm2 Unit 2 quartzite and schist (Neoproterozoic)
 - pCm3 Unit 3 quartzite and pelite (Neoproterozoic)
 - pCm4 Unit 4 quartzite and pelite (Neoproterozoic)
- INTRUSIVE ROCKS**
- Jgr Granite (Jurassic)



Adjoining 7.5' quadrangle names

1	2	3
4	5	6
7	8	9

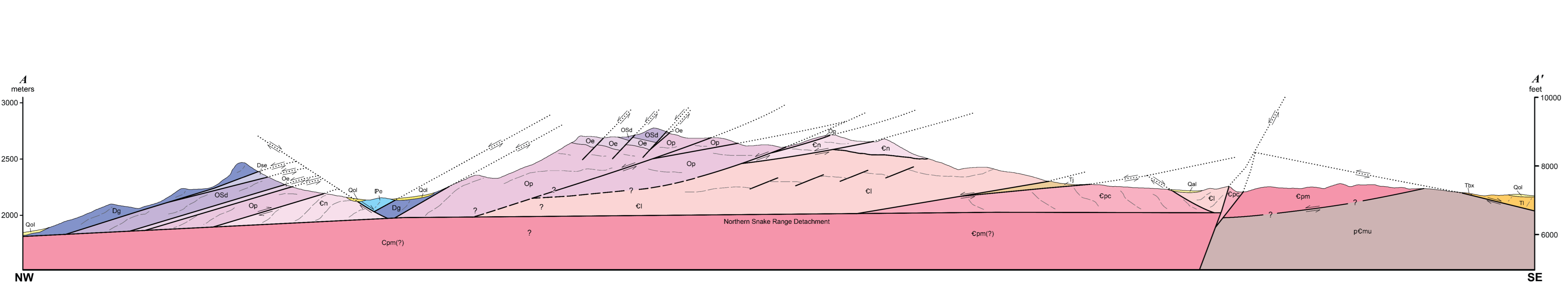
- Yelland Dry Lake
- Starnie Canyon
- Mount Monah
- South Bastian Spring
- Sacramento Pass
- Old Mans Canyon
- Hogum
- Windy Peak
- Lehman Caves



Projection: Universal Transverse Mercator, Zone 11, North American Datum 1983 (m)
Base map: U.S. Geological Survey Sacramento Pass 7.5' quadrangle 2018

Suggested citation:
Miller, E.L., Martinez, C.M., and Johnston, S., 2023, Geologic map of the Sacramento Pass quadrangle, White Pine County, Nevada: Nevada Bureau of Mines and Geology Open-File Report 2023-06, scale 1:24,000, 5 p.

See accompanying text for full unit descriptions and references for this map.



UTM GRID AND
1983 MAGNETIC NORTH
DECLINATION AT CENTER OF SHEET

Nevada Bureau of Mines and Geology
Mark A. Hall School of Earth Sciences and Engineering
College of Science
University of Nevada, Reno

Field work done in 1983-2000.
Research supported by the U.S. Geological Survey, National Cooperative Geologic Mapping Program, under USGS award number G21AC10873. The views and conclusions contained in this document are those of the authors and should not be interpreted as necessarily representing the official policies, either expressed or implied, of the U.S. Government.

OPEN-FILE REPORT
Has not undergone peer review

Compilation by Elizabeth L. Miller, Cynthia M. Martinez, Scott Johnston
Cartographic and map production in ESRI ArcGIS v10.7 (GEMS)
by Andrew S. Hauck
Cartographic and style review by Jennifer Vican
First Edition, May 2023
Symbolism (per FGDC-STD-13-2006)
Published by Nevada Bureau of Mines and Geology
© Copyright 2023 The University of Nevada, Reno. All Rights Reserved.

The map was prepared as an electronic digital file. Unintentional alterations may occur when the map is printed and/or when it is reproduced. The map may change when the map is printed and/or when it is reproduced. The map may change when the map is printed and/or when it is reproduced.

For sale by:
Nevada Bureau of Mines and Geology
2175 Raggio Plaza
Reno, Nevada 89512
ph: (775) 682-8766
www.nbmg.unr.edu; nbmg@unr.edu