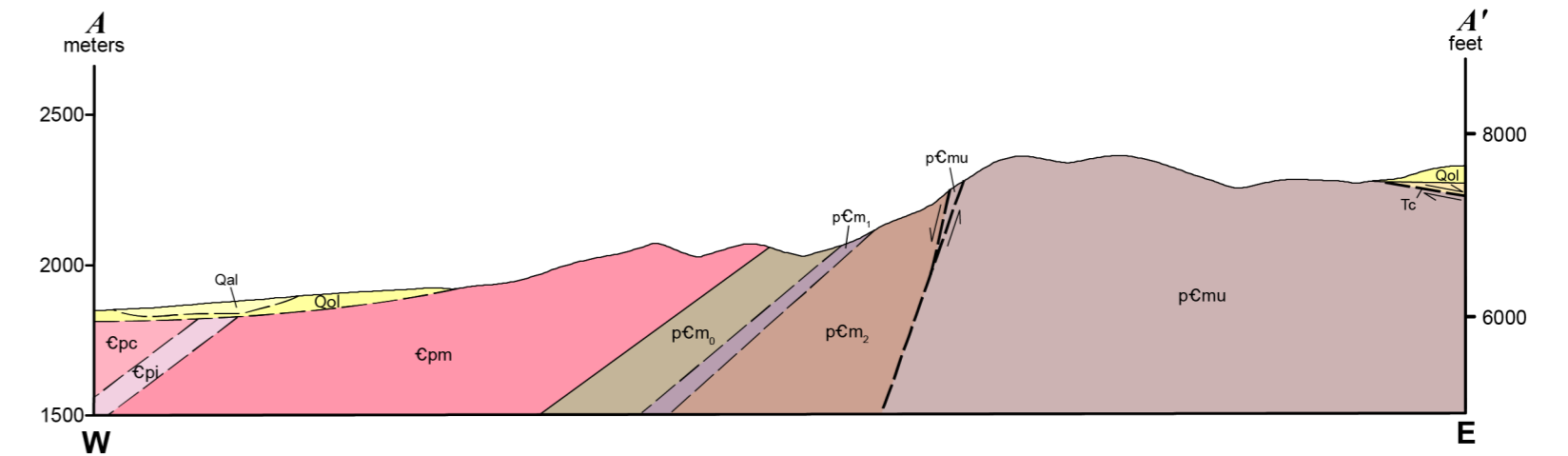
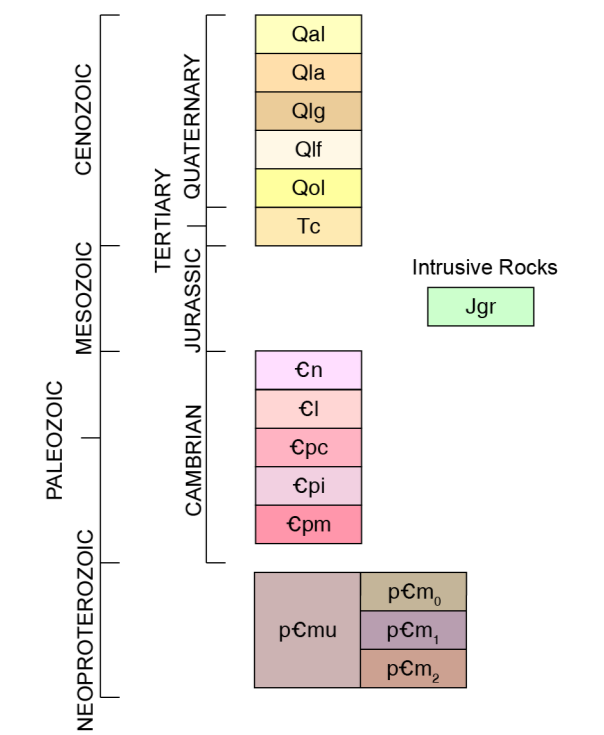


# GEOLOGIC MAP OF THE HOGUM QUADRANGLE, WHITE PINE COUNTY, NEVADA

Elizabeth L. Miller  
Department of Earth & Planetary Sciences, Stanford University  
2023

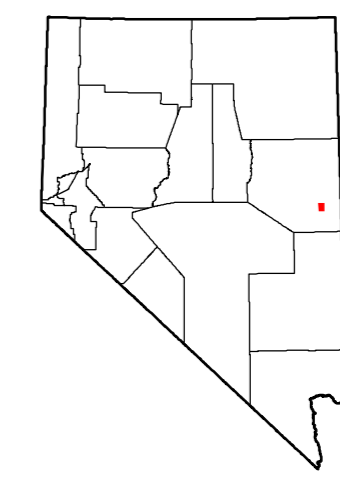


- STRATIFIED ROCKS**
- Qal Active alluvium (Quaternary)
  - Qia Lacustrine/alluvial deposits, undivided (Quaternary)
  - Qig Lacustrine gravels (Quaternary)
  - Qif Fine-grained lacustrine deposits (Quaternary)
  - Qol Older alluvium (Quaternary)
  - Tc Conglomerate (Tertiary, in cross section only)
  - Cn Notch Peak Formation (Upper Cambrian)
  - Cl Lincoln Peak Formation (Upper Cambrian)
  - Cpc Pole Canyon Limestone (Middle Cambrian)
  - Cpl Pioche Shale (Lower Cambrian)
  - Cpm Prospect Mountain Quartzite (Lower Cambrian)
  - pCmu McCoy Creek Group, undivided (Proterozoic)
  - pCm1 Osceola Argillite (Neoproterozoic)
  - pCm2 Unit 2 quartzite and schist (Neoproterozoic)
- INTRUSIVE ROCKS**
- Jgr Granite (Jurassic)

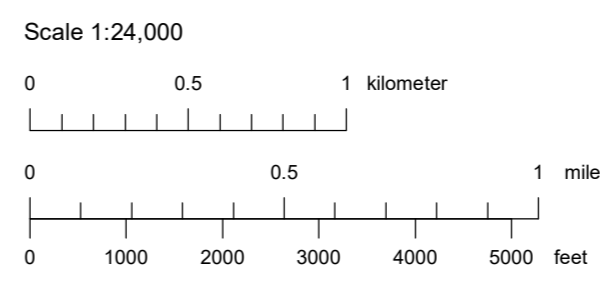
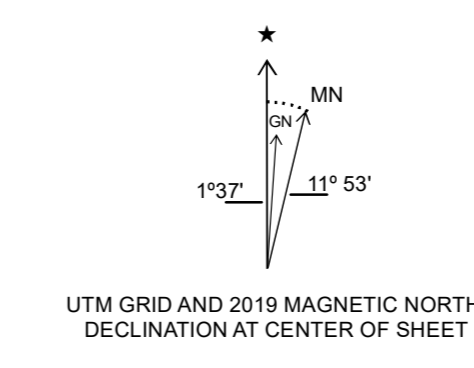


See accompanying text for full unit descriptions and references for this map.

- Contact** Solid where certain and location accurate, dashed where approximately located, dotted where concealed.
- Fault** Dashed where approximately located
- Normal fault** Solid where certain and location accurate, dashed where approximately located, dotted where concealed. Showing dip; ball on downthrown side. In cross section, arrows show relative motion.
- Strike and dip of bedding**  
⊥ Inclined ⊕ Horizontal
- Line of cross section**



- Adjoining 7.5' quadrangle names
- |   |   |   |
|---|---|---|
| 1 | 2 | 3 |
| 4 | 5 | 6 |
| 7 | 8 | 9 |
- 1 Cave Mountain
  - 2 South Bastian Spring
  - 3 Sacramento Pass
  - 4 Majors Place
  - 5 Hogum
  - 6 Windy Peak
  - 7 North Spring Point
  - 8 Baking Powder Flat
  - 9 Wheeler Peak



CONTOUR INTERVAL 20 FEET

Projection: Universal Transverse Mercator, Zone 11,  
North American Datum 1983 (m)

Base map: U.S. Geological Survey Hogum  
7.5' quadrangle (2021)

**Suggested citation:** Miller, E.L., 2023. Geologic map of the Hogum quadrangle, White Pine County, Nevada: Nevada Bureau of Mines and Geology Open-File Report 2023-05, scale 1:24,000, 3 p.

Nevada Bureau of Mines and Geology  
Mackay School of Earth Sciences and Engineering  
College of Science  
University of Nevada, Reno

Field work done in 1982-1985  
Research supported by the U.S. Geological Survey, National Cooperative Geologic Mapping Program, under USGS award number G21AC10873. The views and conclusions contained in this document are those of the authors and should not be interpreted as necessarily representing the official policies, either expressed or implied, of the U.S. Government.

**OPEN-FILE REPORT**  
Has not undergone peer review

Compilation by Elizabeth L. Miller and Cynthia Martinez  
Cartography and map production in ESRI ArcGIS v10.7 (GdMS) by Andrew S. Hauck  
Cartographic and style review by Jennifer Vican  
First Edition, May 2023  
Symbolism (per FGDC-STD-013-2006)  
Published by Nevada Bureau of Mines and Geology  
© Copyright 2023 The University of Nevada, Reno. All Rights Reserved.

This map was printed on an electronic raster directly from digital files. Dimensional calibration may vary between electronic editions and a raster reproduction on the same raster, and paper may change size, therefore, scale and proportions may not be exact on copies of this map.

For sale by:  
Nevada Bureau of Mines and Geology  
2175 Raggio Parkway  
Reno, Nevada 89512  
ph. (775) 682-8766  
www.nbmg.unr.edu; nbmg@unr.edu