

# GEOLOGIC MAP OF THE BULLWHACKER SPRINGS QUADRANGLE, NYE COUNTY, NEVADA

Joan E. Fryxell<sup>1</sup>, Timothy M. Ross<sup>2</sup>, and David L. Weide<sup>3</sup>  
<sup>1</sup>Department of Geological Sciences, California State University, San Bernardino;  
<sup>2</sup>Consulting Geologist; <sup>3</sup>Department of Geoscience, University of Nevada, Las Vegas  
2023

**Contact** Solid where certain and location accurate, dashed where approximately located, dotted where concealed; queried if identity or existence uncertain.

**Internal contact** Large dash where approximate, small dash where concealed. Denotes limit of metamorphism, separating rocks with metamorphic minerals from rocks of the same formation with sedimentary minerals only.

**Fault** Solid where certain and location accurate, dashed where approximately located, dotted where concealed.

**Normal fault** Solid where certain and location accurate, dashed where approximately located, dotted where concealed. Ball on downthrown side. In cross section approximately located faults shown as solid; arrows show relative motion.

**Low-angle normal fault** Solid where certain and location accurate, dashed where approximately located, dotted where concealed. Half circles on downthrown block.

**Pluvial lacustrine shoreline**

**Dike** Approximately located.

**Silica vein** Solid where certain.

**Strike and dip of bedding**

**Strike and dip of foliation in metamorphic rocks**

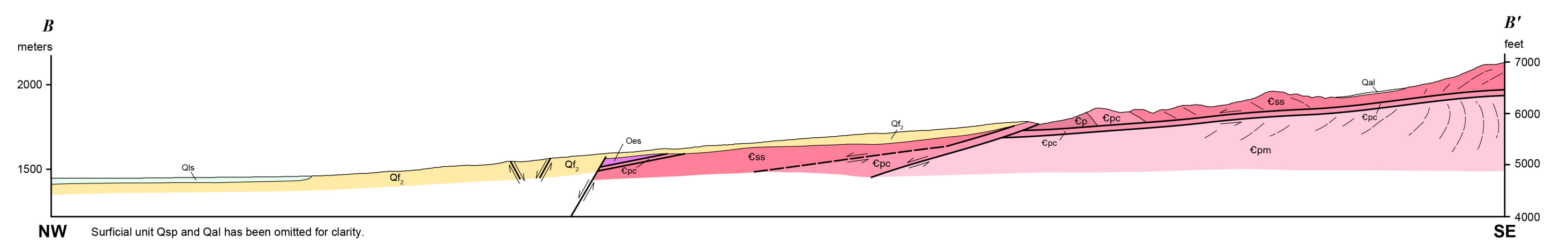
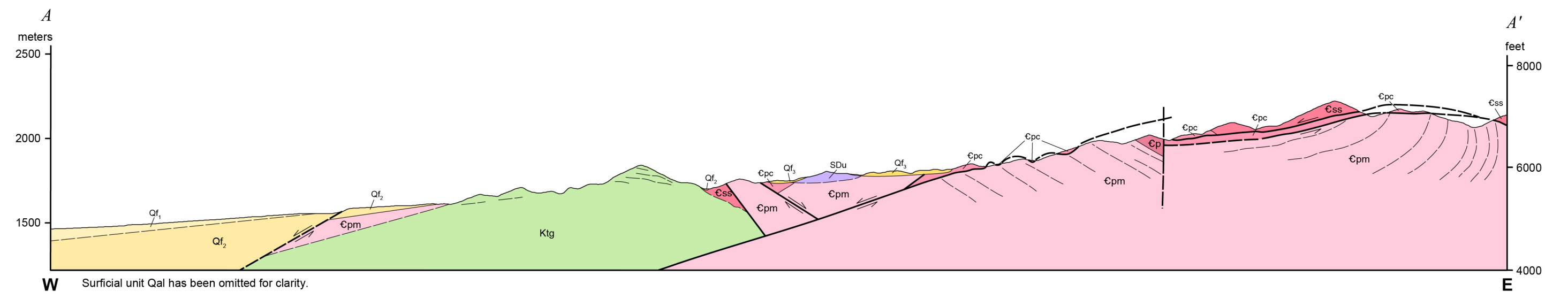
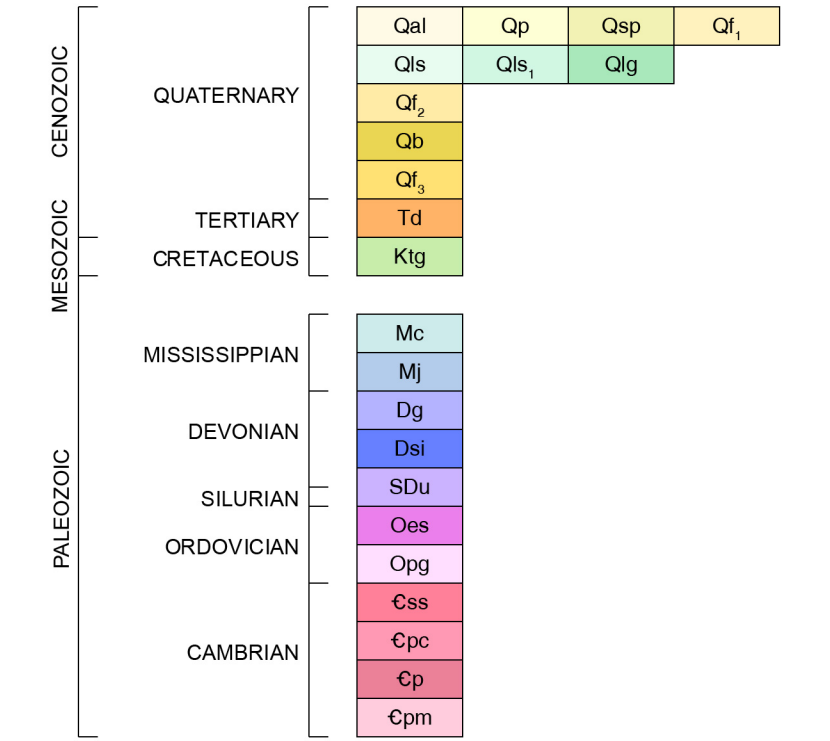
**Strike and dip of mylonitic foliation**

**Bearing and plunge of lineation**

**Line of cross section**

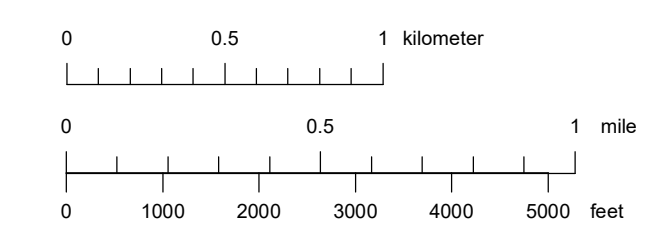
**Breccia**

- Qal Alluvium in intermittently active stream channels (Holocene)
- Qp Ephemeral playa deposits (Holocene)
- Qsp Spring deposits surrounding permanent and intermittent springs and seeps (Holocene)
- Ql Youngest alluvial-fan deposits (Holocene)
- Qls Pluvial lacustrine sediments (Pleistocene)
- Qls Stabilized lacustrine sediments (Pleistocene)
- Qlg Pluvial lake gravels (Pleistocene)
- Ql Older alluvial-fan deposits (Pleistocene)
- Qb Basalt lava (Pleistocene)
- Ql Oldest alluvial-fan deposits (Pleistocene)
- Td Diabase dikes (late Tertiary)
- Klg Granite of Troy Canyon (Cretaceous)
- Mc Chainman Shale (Mississippian)
- Mj Joana Limestone (Mississippian)
- Dg Guilmette Formation (Devonian)
- Sd Simonson Dolomite (Devonian)
- SDU Dark dolomite, brecciated (Silurian and Devonian)
- Oes Ely Springs Formation (Ordovician)
- Opg Pogonip Group, Goodwin Limestone (Ordovician)
- Css Sidehill Spring Formation (Cambrian)
- Cpc Pole Canyon Limestone (Cambrian)
- Cp Pioche Shale (Cambrian)
- Cpm Prospect Mountain Quartzite (Cambrian)



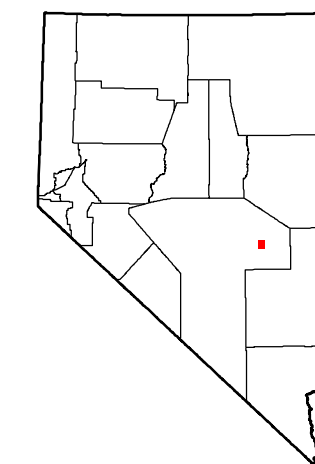
**Suggested citation:**  
Fryxell, J.E., Ross, T.M., and Weide, D.L., 2023, Geologic map of the Bullwhacker Springs quadrangle, Nye County, Nevada: Nevada Bureau of Mines and Geology Open-File Report 2023-02, scale 1:24,000, 3 p.

Scale 1:24,000

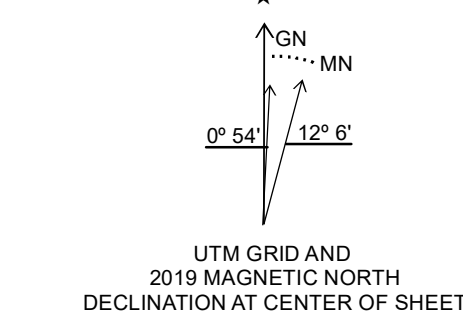


Projection: Universal Transverse Mercator, Zone 11, North American Datum 1983 (m)

Base map: U.S. Geological Survey Bullwhacker Springs 7.5' quadrangle (2021)



See accompanying text for full unit descriptions and references for this map.



Adjoining 7.5' quadrangle names

1	2	3
4	5	6
7	8	9

- 1 Blue Eagle Springs SW
- 2 Blue Eagle Springs
- 3 Blue Eagle Mountain
- 4 Christian Spring
- 5 Bullwhacker Springs
- 6 Health Canyon
- 7 Crows Nest
- 8 Troy Canyon
- 9 Horse Spring Hills

Nevada Bureau of Mines and Geology  
Mackay School of Earth Sciences and Engineering  
College of Science  
University of Nevada, Reno

Field work done in 1990-2010.  
Research supported by the U.S. Geological Survey, National Cooperative Geologic Mapping Program, under STATEMAP award number G21AC10873. The views and conclusions contained in this document are those of the authors and should not be interpreted as necessarily representing the official policies, either expressed or implied, of the U.S. Government.

**OPEN-FILE REPORT**  
Has not undergone peer review

Compilation by Joan E. Fryxell, Timothy M. Ross, and David L. Weide  
Cartographic and map production in ESRI ArcGIS v10.8 (GeGIS) by Ryan G. Smith  
Cartographic and style review by Jennifer Vican  
First Edition, April, 2023  
Symiology per FCCC-STD-013-2006  
Published by Nevada Bureau of Mines and Geology  
© Copyright 2023 The University of Nevada, Reno. All Rights Reserved.

For sale by:  
Nevada Bureau of Mines and Geology  
2175 Raggio Pkwy  
Reno, Nevada 89512  
ph. (775) 862-8166  
www.nbrmg.unr.edu; nbrmg@unr.edu