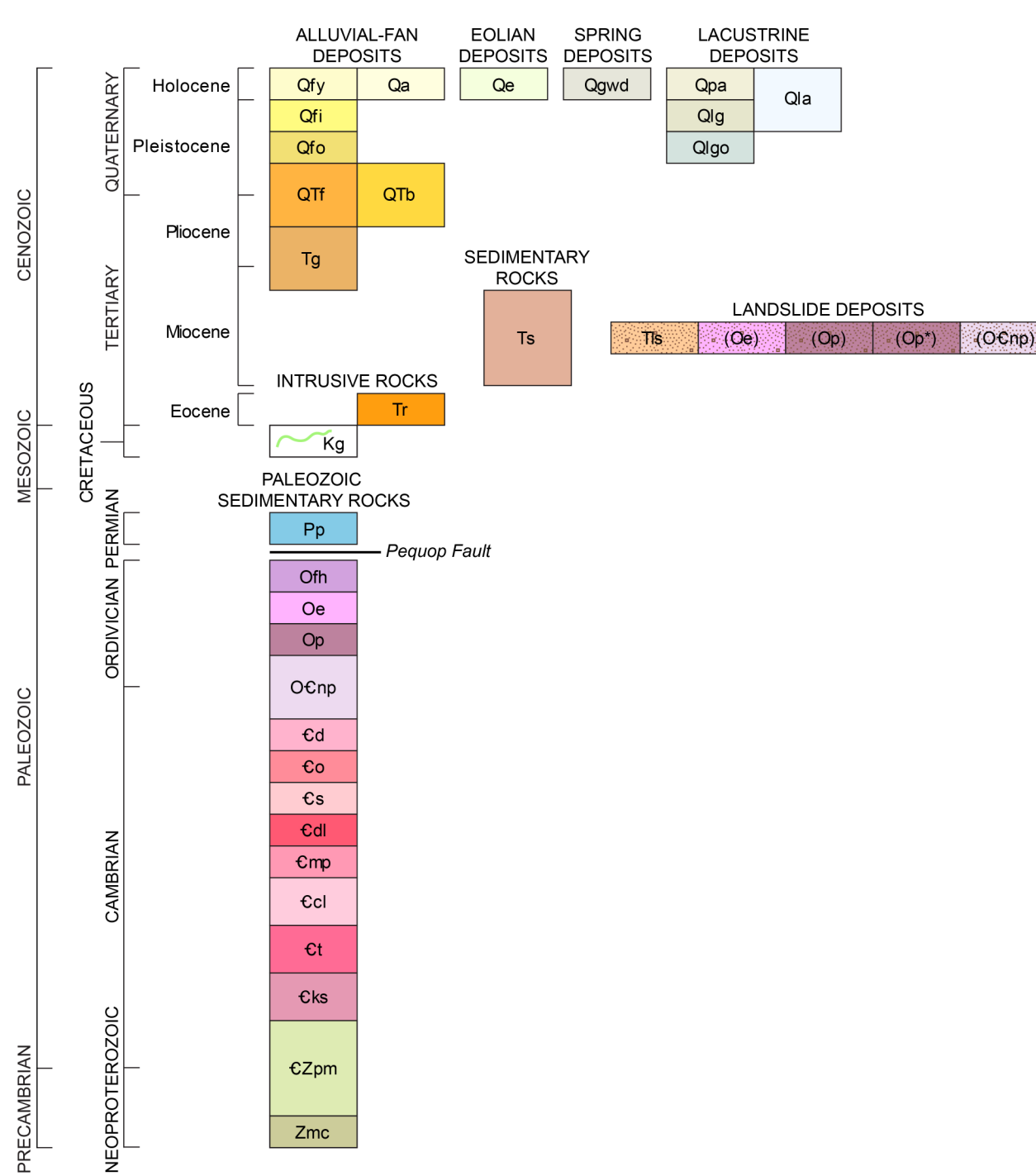
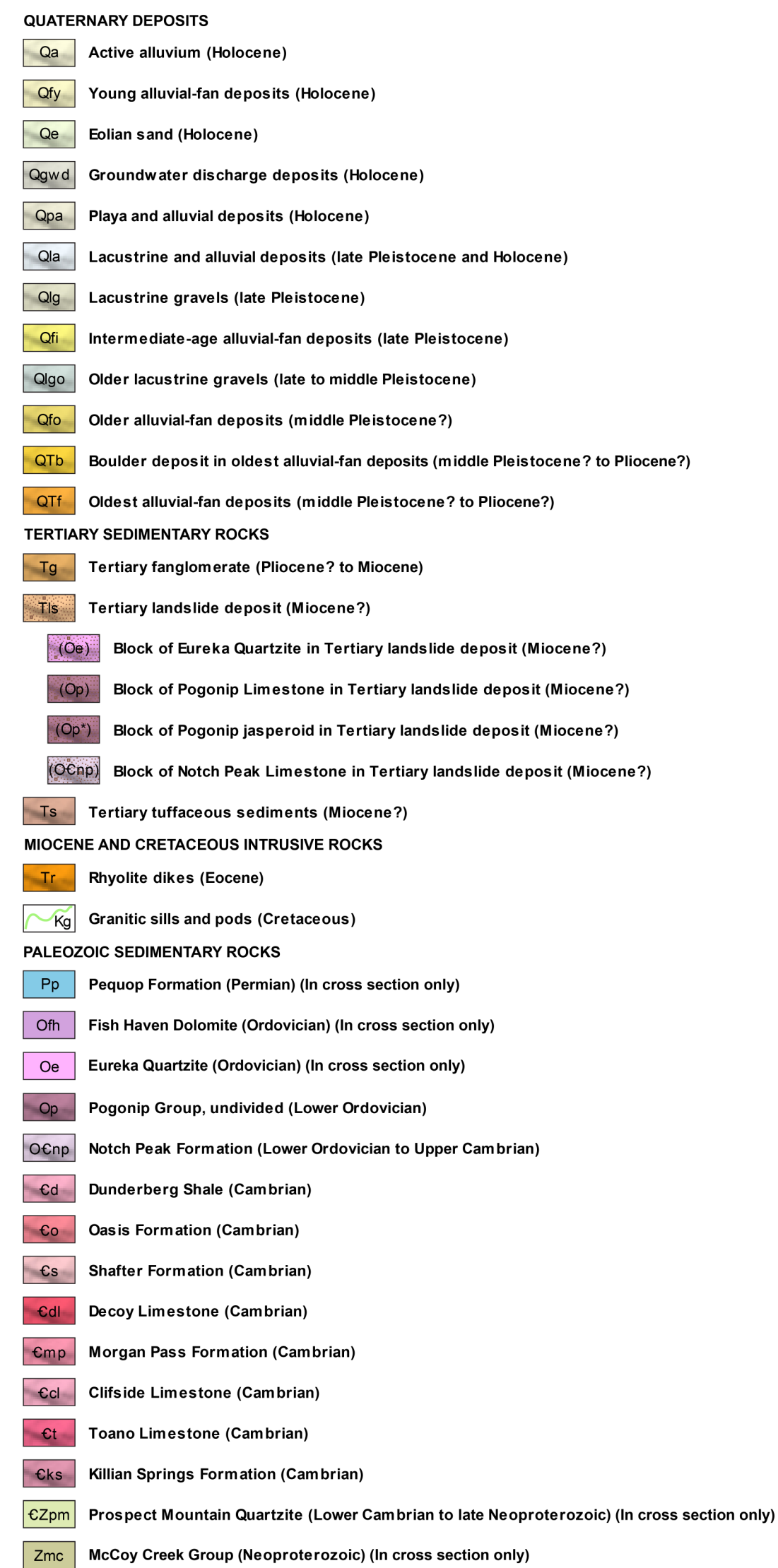
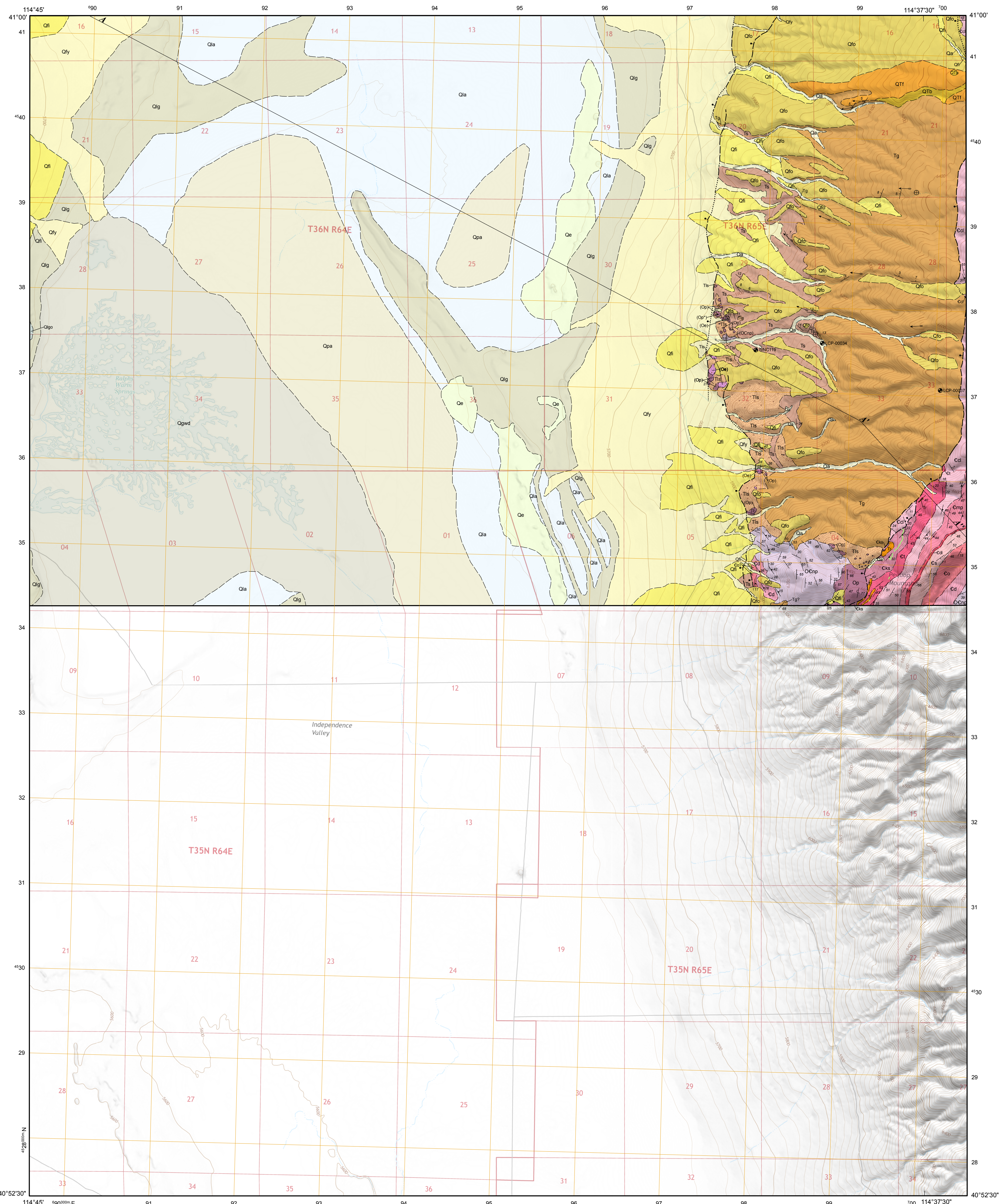


PRELIMINARY GEOLOGIC MAP OF THE NORTH HALF OF THE INDEPENDENCE VALLEY NW QUADRANGLE AND THE ADJACENT PART OF THE INDEPENDENCE VALLEY NE QUADRANGLE, ELKO COUNTY, NEVADA

Seth Dee, Christopher D. Henry, Michael W. Ressel, and Andrew V. Zuza
Nevada Bureau of Mines and Geology, University of Nevada, Reno
2017



Contact Solid where certain, dashed where approximately located; queried if identity or existence uncertain.

Fault Dashed where approximately located, dotted where concealed; queried if identity or existence uncertain.

Normal fault Dashed where approximately located, dotted where concealed. Ball on downthrown side. In cross section approximately located faults shown as solid, arrows show relative motion.

Sill Approximately located. In cross section inferred locations shown as dashed.

Strike and dip of bedding
Inclined Overturned Horizontal

Strike and dip of metamorphic foliation
Inclined

Strike and dip of flow banding in intrusive rocks
Inclined

Lineation showing bearing and plunge

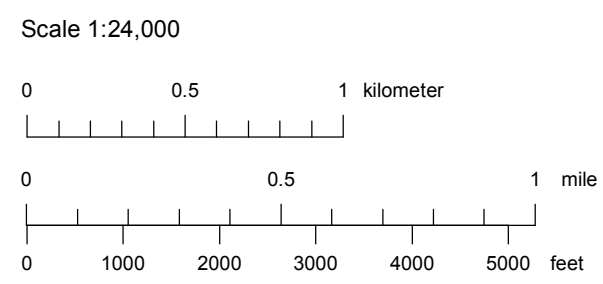
Paleocurrent direction from imbricated clasts

Borehole
WNC119

Line of cross section

See accompanying text for full unit descriptions and references for this map.

Suggested citation:
Dee, S., Henry, C.D., Ressel, M.W., and Zuza, A.V., 2017. Preliminary geologic map of the north half of the Independence Valley NW quadrangle and the adjacent part of the Independence Valley NE quadrangle, Elko County, Nevada: Nevada Bureau of Mines and Geology Open-File Report 17-6, scale 1:24,000, 4 p.



CONTOUR INTERVAL 20 or 40 FEET

Projection: Universal Transverse Mercator, Zone 11, North American Datum 1983 (m)

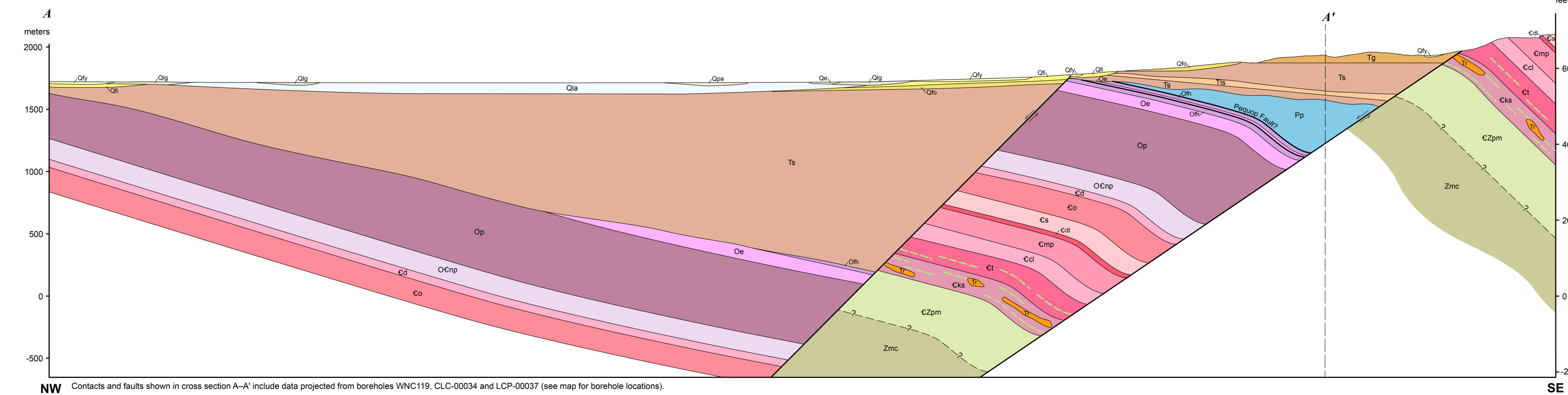
Base map: U.S. Geological Survey Independence Valley NW 7.5' quadrangle (2014)
U.S. Geological Survey Independence Valley NE 7.5' quadrangle (2014)

Nevada Bureau of Mines and Geology
Markay School of Earth Sciences and Engineering
College of Science
University of Nevada, Reno

Field work done in 2017.
This geologic map was funded in part by the USGS National Cooperative Geologic Mapping Program under STATEMAP award number G16AC00186, 2017.
Borehole data for WNC119 provided by Gregg Lupton and Chrissy Ricks at Agnico Eagle Mines Limited.
Borehole data for LCP-00034 and LCP-00037 provided by Jeff Blackmon at Newmont Mining Corporation.
This map benefited from helpful discussions with geologists at Agnico Eagle and Newmont.

DRAFT
Preliminary geologic map, field review, or full editing
Will be revised before publication

Compilation by Seth Dee
Cartography and map production in ESRI ArcGIS v10.3 (ArcGeology v1.3) by Irene M. Seelye
First Edition: September, 2017
Symbolology per FGDC-STD-013-2006
Printed by Nevada Bureau of Mines and Geology
© Copyright 2017 The University of Nevada, Reno. All Rights Reserved.
This map was printed on an electronic vector directly from digital files. Dimensional calibration may vary between electronic plates and a hard copy on the same plates, and paper may change over time. Scale and proportions may not be exact on copies of this map.
For sale by:
Nevada Bureau of Mines and Geology
2175 Raggio Place
Reno, Nevada 89512
ph. (775) 843-4566
www.nbrmg.unr.edu, nbrmg@unr.edu



Contacts and faults shown in cross section A-A' include data projected from boreholes WNC119, CLC-00034 and LCP-00037 (see map for borehole locations).