

# PRELIMINARY SURFICIAL GEOLOGIC MAP OF THE IVANPAH VALLEY PART OF THE ROACH AND DESERT 7.5' QUADRANGLES, CLARK COUNTY, NEVADA

Alan R. Ramelli<sup>1</sup>, P. Kyle House<sup>2</sup>, and Brenda J. Buck<sup>2</sup>

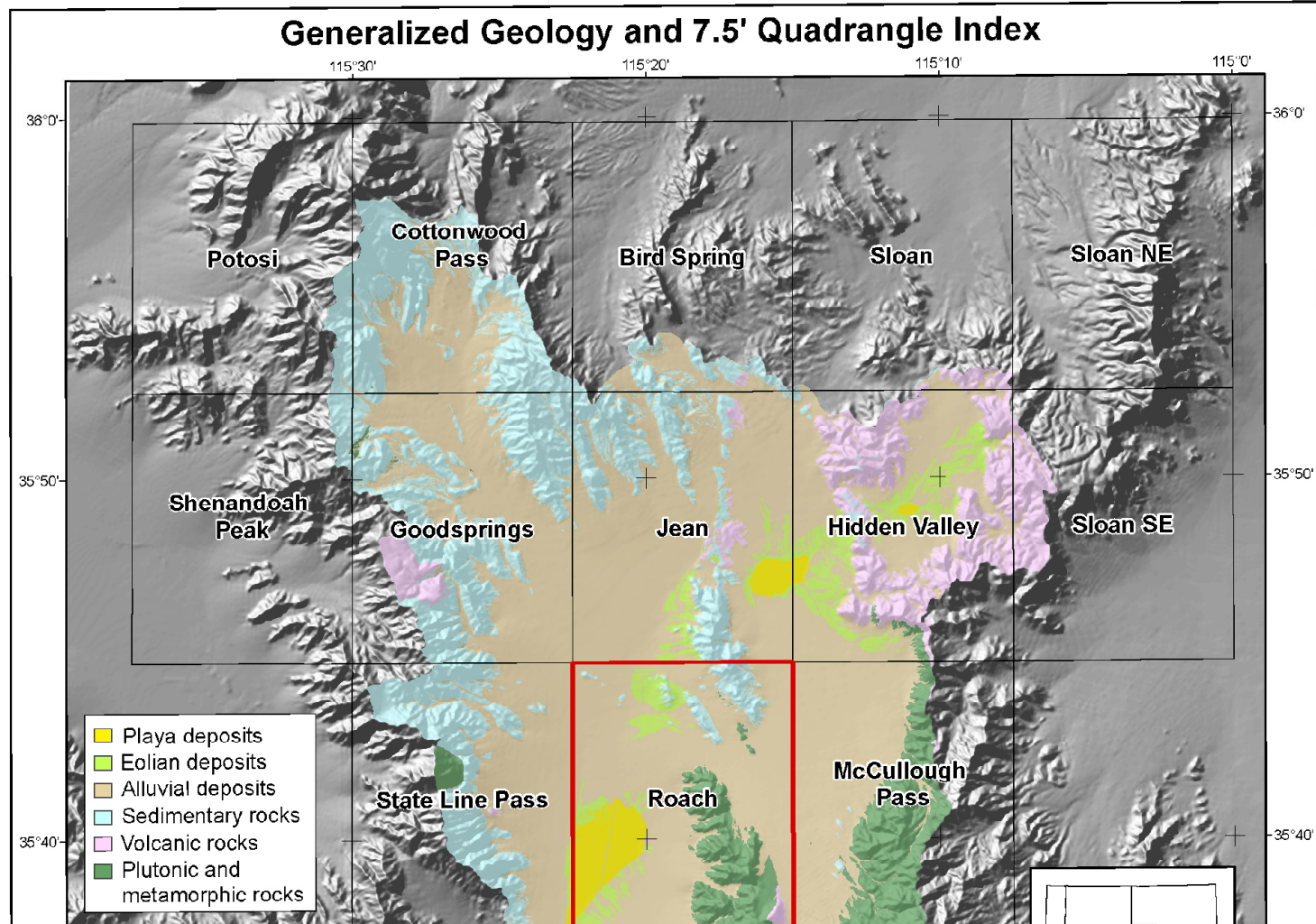
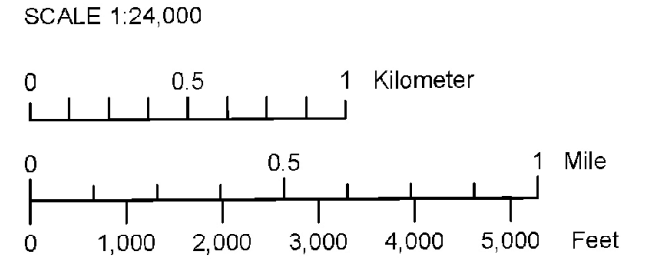
<sup>1</sup> Nevada Bureau of Mines and Geology, University of Nevada, Reno

<sup>2</sup> Department of Geoscience, University of Nevada, Las Vegas

2006

Contact: Deaded where approximately located.

Waterline Boundary



NEVADA BUREAU OF MINES AND GEOLOGY  
UNIVERSITY OF NEVADA, RENO  
Funding from Clark County Regional Flood Control District and U.S.  
Geological Survey STATEMAP Program (Agreement No. 04-HQ-A0-0003; 03-HQ-A0-0004; and 02-HQ-A0-0019). Field work performed from 2002-2004. Field by Kyle House and Brenda J. Buck. Any errors and omissions are the responsibility of the authors and not the Nevada Bureau of Mines and Geology. This map is not intended for use in any legal proceeding. Preliminary geologic map. Has not undergone peer review. Has not been edited. Copyright: P. Kyle House and Christine M. Amitt. Printed by Nevada Bureau of Mines and Geology. First Edition: 2006. University of Nevada, Reno, Mail Stop 178. (775) 784-6991. <http://www.nvbg.edu>