

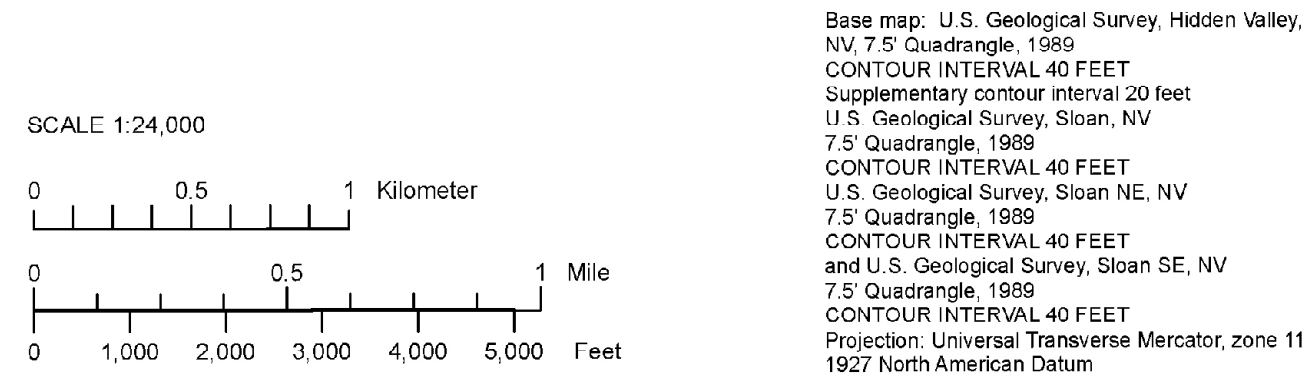
PRELIMINARY SURFICIAL GEOLOGIC MAP OF THE IVANPAH VALLEY PART OF THE HIDDEN VALLEY, SLOAN, SLOAN NE, AND SLOAN SE 7.5' QUADRANGLES, CLARK COUNTY, NEVADA

P. Kyle House¹, Brenda J. Buck², and Alan R. Ramelli¹

¹ Nevada Bureau of Mines and Geology, University of Nevada, Reno

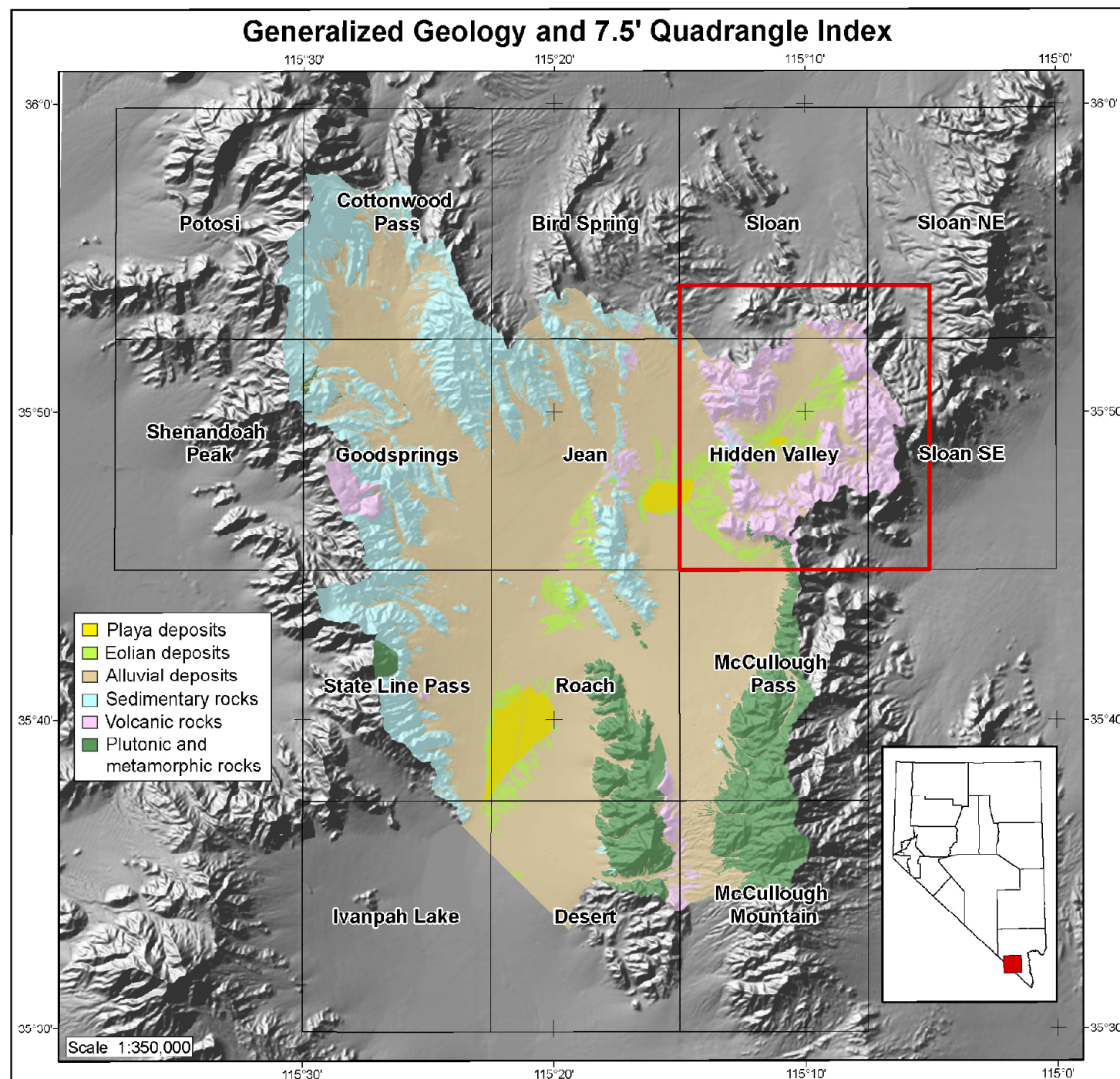
² Department of Geoscience, University of Nevada, Las Vegas

2006



Contact: Dashed where approximately located.

Watershed Boundary



NEVADA BUREAU OF MINES AND GEOLOGY
MACKEY SCHOOL OF EARTH SCIENCES AND ENGINEERING
UNIVERSITY OF NEVADA, RENO
Funding from Clark County Regional Flood Control District and U.S. Geological Survey (STATEMAP Program) agreement Nos. 04-HQ-AQ-0025, 03-HQ-AQ-0048, and 02-HQ-AQ-0019. Field work performed from 2002-2005.
We thank the following individuals for their assistance and input during the development of this map: Brian Hart, Thomas P. McCann, Amy Brock, and Andrew Hansen.
This map was estimated directly from the House and others (2005) 1:50,000 scale geologic map. The data have not been explicitly revised at 1:24,000 scale.
Preliminary geologic map.
Has not undergone review or field review.
Has not been edited.
Not for current scientific publication.
Cartography: P. Kyle House and Christine M. Anzell.
Printed by: Nevada Bureau of Mines and Geology.
University of Nevada, Mail Stop 778.
Reno, NV 89517.
© 2006.
This report and its contents are in the public domain in the United States of America. Reproduction of this report is permitted. However, reproduction of the map is prohibited without the written permission of the Nevada Bureau of Mines and Geology.