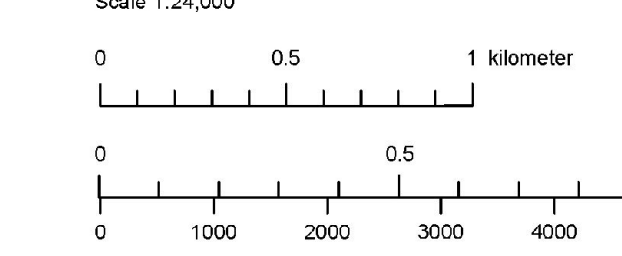
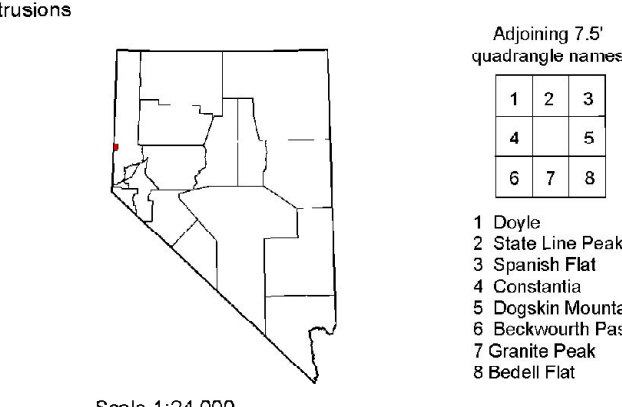
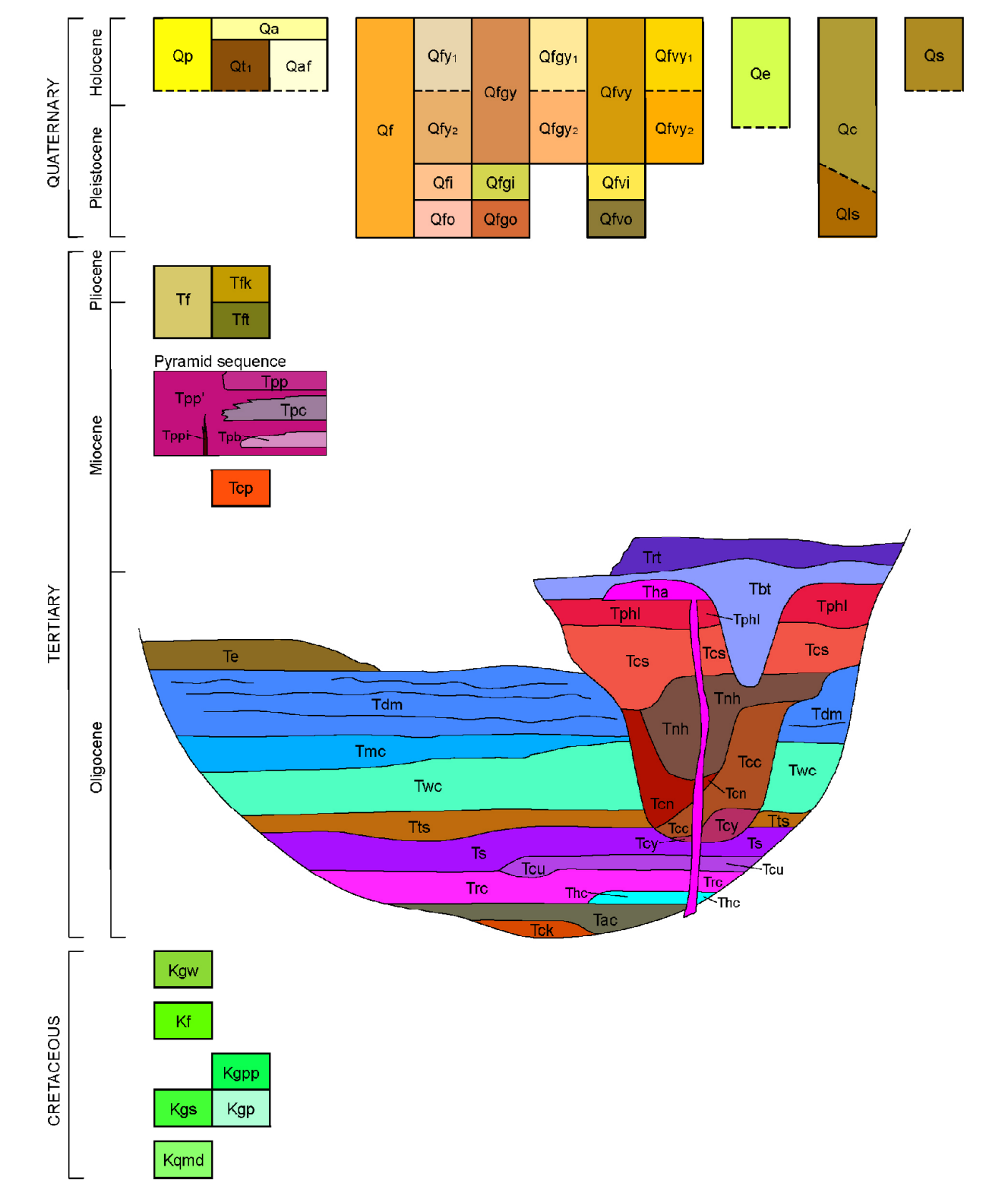


- Qa Active alluvium
 - Qaf Fine-grained alluvium
 - Qat Alluvial terrace deposits
 - Qp Ponded alluvium
 - Qs Spring deposits
 - Qe Eolian deposits
 - Qr Alluvial fan deposits (undifferentiated), Basalt-dominated fan deposits
 - Qry1 Alluvial fan deposits (late Holocene to late Pleistocene)
 - Qry2 Alluvial fan deposits (late to middle Holocene)
 - Qry3 Alluvial fan deposits (early Holocene to late Pleistocene)
 - Qri1 Intermediate-age fan deposits (late to middle Pleistocene)
 - Qri2 Older fan deposits (middle to early Pleistocene)
 - Qc Colluvial deposits
 - Qls Landslide deposits
 - Tt Pliocene to late Miocene sedimentary deposits
 - Tk Boulder beds of Cretaceous granodiorite
 - Tt Tuff of late Miocene ash-flow tuff
 - Tp Finely porphyritic basaltic andesite intrusion
 - Tsp Finely porphyritic basaltic andesite lava
 - Tpp Conglomerate, sandstone, and breccia
 - Tp Porphyritic basaltic andesite lava
 - Tpb Basalt lava
 - Tpc Pre-Pyramid sequence conglomerate
 - Ttr Rhyolite-dacite ash-flow tuff
 - Tbt Tuff breccia
 - Tm Hornblende andesite dike and lavas(?)
 - Tph Tuff of Painted Hills
 - Tcs Tuff of Chimney Spring
 - Tca Lower part
 - Tth Nine Hill Tuff
 - Tthu Upper part
 - Tthl Lower part
 - Tcn Conglomerate below Nine Hill Tuff
 - Tcc Tuff of Campbell Creek
 - Tcy Conglomerate below tuff of Campbell Creek
 - Te Tuff E
 - Tdm Tuff of Dogskin Mountain
 - Tmc Tuff of Mine Canyon
 - Twc Tuff of Cove Spring
 - Tt Conglomerate and tuffaceous sedimentary rock
 - Tu Tuff of Sutcliffe
 - Tsc Sedimentary rocks below tuff of Sutcliffe
 - Trc Tuff of Rattlesnake Canyon
 - Ttho Tuff of Hardscrabble Canyon
 - Tac Tuff of Axehandle Canyon
 - Tbc Basal Tertiary conglomerate
 - Kgn Weathered Cretaceous granitic rocks
 - Kf Aplite to pegmatitic dikes and irregular intrusions
 - Kgs Granodiorite of the Sand Hills
 - Kgp Quartz-pegmatite of Petersen Mountain
 - Kgr Granodiorite of Petersen Mountain
 - Kgm Quartz monzonite of Dogskin Mountain
- See accompanying brochure for descriptions of map units.



Base map: U.S. Geological Survey, Dogskin Mountain, NV, CA 7.5' x 15' quadrangle, 1970
 CONTOUR INTERVAL, 10 METERS
 Supplementary contour interval 5 meters
 and U.S. Geological Survey, Constantia, CA 7.5' Quadrangle, 1984
 CONTOUR INTERVAL, 40 FEET
 Supplementary contour interval 20 feet
 Projection: Universal Transverse Mercator, zone 11
 1983 North American Datum

Field work 2004-2005
 Geologic mapping was supported by the U.S. Geological Survey STATEMAP Program (Agreement No. 04-HQ-A0-0033)
DRAFT
 Preliminary geologic map
 Has not undergone office or field review
 Will be revised before publication
 First Edition
 Printed by Nevada Bureau of Mines and Geology
 Digital geologic compilation by G. D. Torre and A. R. Ramelli
 Cartography by C. M. Arnt
 Nevada Bureau of Mines and Geology
 University of Nevada, Mail Stop 178
 Reno, Nevada 89557-0088
 (775)784-6991, ext. 2
 www.nbgm.unr.edu, nbgm@unr.edu
 This map was printed on an uncoated paper stock by the Nevada Bureau of Mines and Geology. The map is not intended for use as a structural geologic map. The map is not intended for use as a structural geologic map. The map is not intended for use as a structural geologic map.

PRELIMINARY GEOLOGIC MAP OF THE SOUTH HALF OF THE SEVEN LAKES MOUNTAIN QUADRANGLE, WASHOE COUNTY, NEVADA AND LASSEN COUNTY, CALIFORNIA
 Christopher D. Henry, Alan R. Ramelli, and James E. Faulds
 2005