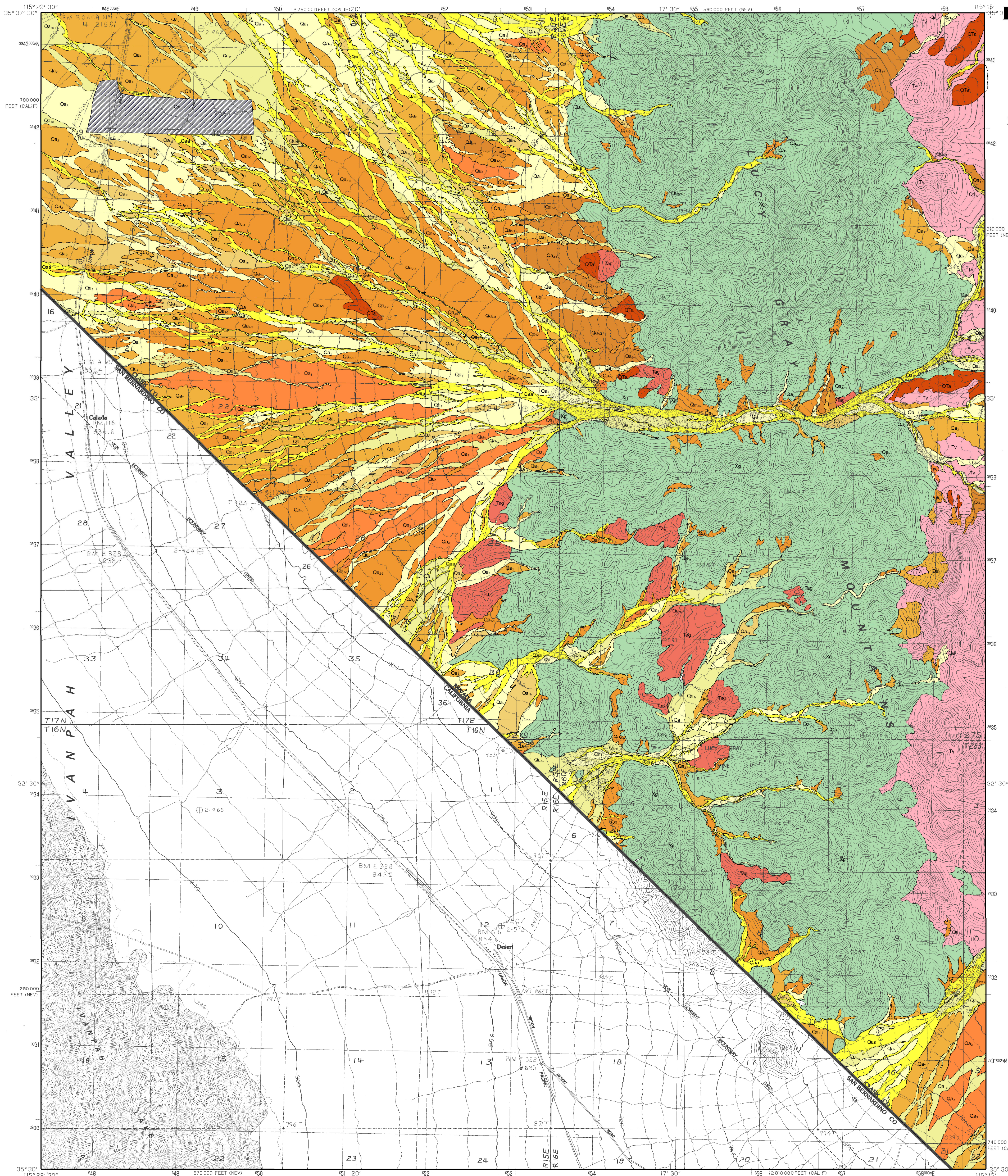
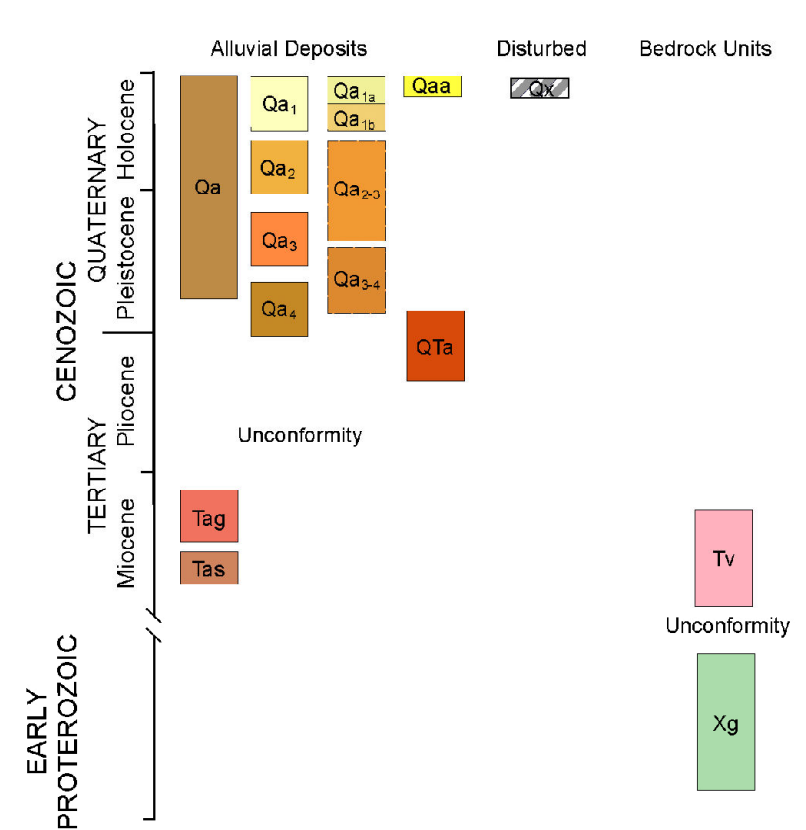


PRELIMINARY SURFICIAL GEOLOGIC MAP OF THE NEVADA PART OF THE DESERT QUADRANGLE

P. Kyle House, Brien K. Park, and Alan R. Ramelli
2004



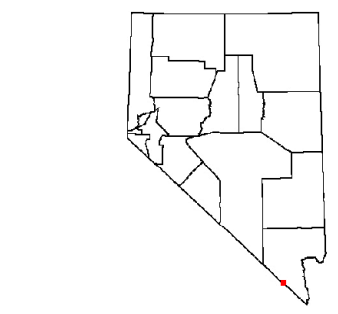
- Artificial fill, borrow pits, disturbed, and extensively developed areas
- Qaa Alluvium of most frequently active fans and washes
- Qa1 Holocene alluvium
- Qa2 Alluvium of active washes
- Qa3 Alluvium of intermitently active fans and washes
- Qa4 Latest Pleistocene alluvium
- Qa5 Late and middle Pleistocene alluvium
- Qa6 Late and middle Pleistocene alluvium
- Qa7 Middle and early Pleistocene alluvium
- Qa8 Early Pleistocene alluvium
- QTa Early Pleistocene and Pliocene alluvium
- Tag Pliocene? and Miocene coarse-grained alluvium
- Tas Pliocene? and Miocene medium to coarse-grained alluvium
- Tv Tertiary volcanic rocks, undivided
- Xg Early Proterozoic granite and gneiss, undivided



--- Contact Dashed where approximately located.

--- Intraformational contact

Pattern indicates mud or sand as designated on base map



Scale 1:24,000

0 0.5 1 kilometer

0 1000 2000 3000 4000 5000 feet

CONTOUR INTERVAL 40 FEET
Supplementary Contour Interval 20 feet

Base map: U.S. Geological Survey, Desert, NV and CA 7.5' Quadrangle, 1989
Projection: Transverse Mercator, zone 11

Field work 2002-2004
Geologic mapping was supported by the U.S. Geological Survey STATEMAP Program (Agreement No. 03-HQ-AG-0049), and the Clark County Regional Flood Control District.

DRAFT
Preliminary geologic map.
Has not undergone office or field review.
Will be revised before publication.

First Edition
Planned by Nevada Bureau of Mines and Geology
Digital geologic compilation by P. K. House
Digital cartography by E. Crouse and J. Meakin

Nevada Bureau of Mines and Geology
University of Nevada, Mail Stop 1174
Reno, Nevada 89557-0088
(775)784-6591, ext. 2
www.nbmgn.unr.edu, nbmgales@unr.edu