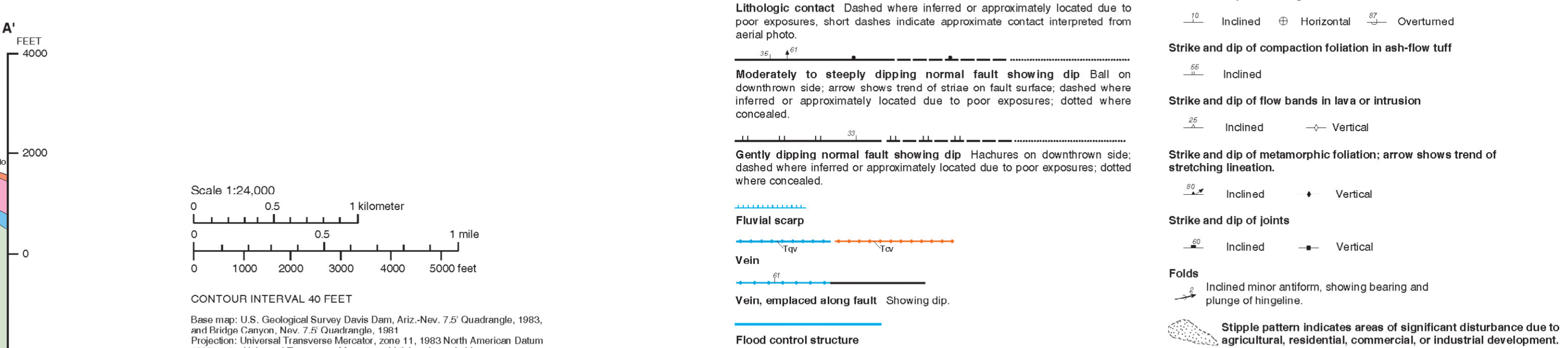
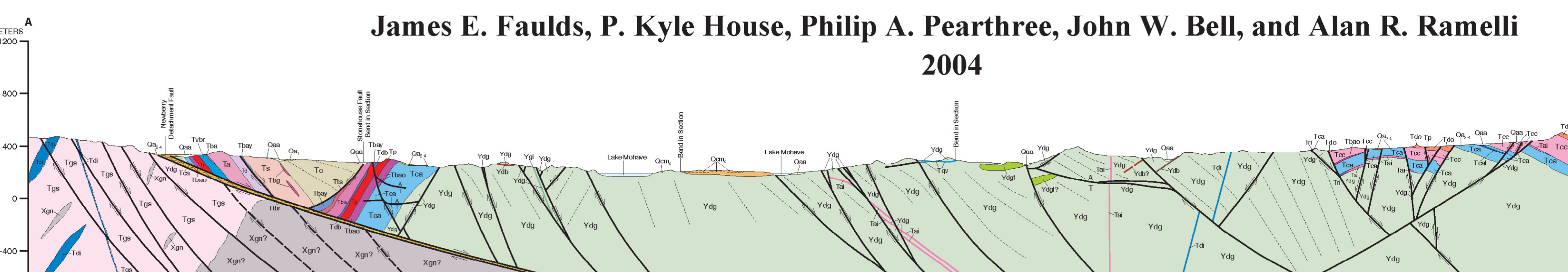


**PRELIMINARY GEOLOGIC MAP OF THE DAVIS DAM QUADRANGLE, AND EASTERN PART OF THE BRIDGE CANYON QUADRANGLE, CLARK COUNTY, NEVADA, AND MOHAVE COUNTY, ARIZONA**

James E. Faulds, P. Kyle House, Philip A. Pearthree, John W. Bell, and Alan R. Ramelli  
2004



Field work performed from 2000-2004.  
**DRAFT**  
Preliminary geologic map.  
Has not undergone office or field review.  
May be revised before publication.  
First edition 2004.  
Editor: Don Moseley  
Cartography by Robert Chaney; additional digital compilation by P. Kyle House and Philip A. Pearthree.  
Printed by Nevada Bureau of Geology and Geophysics.  
Geologic mapping was supported by the Nevada Division of Emergency Management and the U.S. Geological Survey STATEMAP Program (Agreement No. 99492-A0-0059).  
Nevada Bureau of Geology and Geophysics  
University of Nevada, Mail Stop 179  
Reno, Nevada 89602-0179  
(775) 784-6991, ext. 7  
http://www.nbgg.unr.edu