

Surficial Deposits

- af** Artificial fill Unconsolidated mine tailings. Not shown on geologic cross section or correlation of map units.
- Qa** Alluvium of active washes (Holocene) Pink to pale-brown sand to pebble to cobble gravel occurring in incised active stream channels; unconsolidated to surficially cemented by calcium carbonate (case hardened). Clast composition is dominantly limestone and dolomite with subordinate quartzite. Sand-size sediment is primarily quartz; fragmental limestone, dolomite, and feldspar are subordinate. Deposits are typically veneers in wash bottoms and subject to flooding. Thickness ranges from 1 to 5 m.
- Qai** Intermittently active alluvium (Holocene) Pink to pale-brown sand and pebble to cobble gravel that occurs primarily on between-channel alluvial flats and less commonly in incised washes, slightly to moderately consolidated. Deposits are lithologically similar to Qa and grade laterally into Qa. Contains sediment transported and deposited during high water or heavy flood discharges. Thickness ranges from 1 to 5 m.
- Qc** Colluvium (age indeterminate) Weathered material transported by gravity. Pink to brown sand, pebble to cobble gravel, and petrocalcic (calcrete) fragments that occur as thin veneers on slopes; unconsolidated to slightly consolidated material recycled from exposed bedrock units and from other alluvial and colluvial deposits; subject to reworking by wind and sheetwash. Thickness ranges from 1 to 10 m.
- Qoa1** Older alluvium of the Blue Diamond and Red Rock fans (late and middle Pleistocene) Slightly to well dissected, moderately to well consolidated to locally cemented; petrocalcic carbonate horizon (calcrete) 1.5-2 m thick occurs at or near the surface. Clast composition is mainly limestone and dolomite with subordinate quartzite and sandstone. Surface of the unit is flat and smooth; displays a shallow, braided drainage pattern; has a well developed desert pavement and is mottled on air photographs. This unit is divided into two terrace levels with slight topographic and surface morphology differences. **Qoa2** desert pavement contains abundant Aztec Sandstone clasts; **Qoa2** desert pavement contains few Aztec Sandstone clasts. Thickness ranges from 10 to 50 m in the western portion of quadrangle may occur as a thin veneer (1-2 m thick) over the older gravel deposits of the Blue Diamond and Red Rock fans (Qog).
- Qog1** Older gravel deposits of the Blue Diamond and Red Rock fans (Pleistocene/Pliocene) Consolidated to strongly cemented gravel deposits that represent early-generation alluvial fan development. Clasts consist mainly of limestone and dolomite with subordinate quartzite and sandstone. At the surface, carbonate clasts are strongly etched and broken and possess slight to moderate petrocalcic coatings; the petrocalcic horizon is eroded and petrocalcic fragments comprise varying proportions of the surface clasts. **Qog2** Light-gray to pink-brown, imbricated clast-supported pebble to cobble gravel capped by a matrix-supported petrocalcic (calcrete) horizon 1.5-2 m thick near or at the surface. Lithology is the same as Qog, but the A-B soil horizons have been removed by erosion. This unit is not present in this quadrangle, but occurs immediately to the north on the Blue Diamond NE Quadrangle. **Qog3** Light to medium-brown, pebble to boulder gravel, capped by a petrocalcic (calcrete) horizon more than 2 m thick. Surface of the deposit displays ballena topography, parallel drainage, and contains a well-developed desert pavement. The petrocalcic (calcrete) horizons are eroding and petrocalcic fragments form the largest proportion of the surface clasts. Thickness ranges from 20 to 60 m.

- Qog1** Older gravel deposits of the Blue Diamond and Red Rock fans (Pleistocene/Pliocene) Consolidated to strongly cemented gravel deposits that represent early-generation alluvial fan development. Clasts consist mainly of limestone and dolomite with subordinate quartzite and sandstone. At the surface, carbonate clasts are strongly etched and broken and possess slight to moderate petrocalcic coatings; the petrocalcic horizon is eroded and petrocalcic fragments comprise varying proportions of the surface clasts. **Qog2** Light-gray to pink-brown, imbricated clast-supported pebble to cobble gravel capped by a matrix-supported petrocalcic (calcrete) horizon 1.5-2 m thick near or at the surface. Lithology is the same as Qog, but the A-B soil horizons have been removed by erosion. This unit is not present in this quadrangle, but occurs immediately to the north on the Blue Diamond NE Quadrangle. **Qog3** Light to medium-brown, pebble to boulder gravel, capped by a petrocalcic (calcrete) horizon more than 2 m thick. Surface of the deposit displays ballena topography, parallel drainage, and contains a well-developed desert pavement. The petrocalcic (calcrete) horizons are eroding and petrocalcic fragments form the largest proportion of the surface clasts. Thickness ranges from 20 to 60 m.

Moenkopi Formation (Triassic)

- Tmu** Upper part of the Moenkopi Formation Includes Upper Red Shabkabab, and Middle Red Members, undivided. Upper part is chalk white through cream, ash-gray, tan, pinkish-gray, and light-brown interbedded claystone, dolomite, shale, siltstone, gypsiferous sediment, and thin limestone. Weathers light-gray to grayish-white. Up to 62 m thick. Lower part is reddish-brown and brown, well-indurated, rippled-marked, well-bedded siltstone, fine-grained sandstone, mudstone, claystone, with thin beds of gypsum. Weathers light reddish brown. Maximum thickness is 150 m.
- Tmv** Virgin Limestone Member Cream, yellow, light brown, ash- to medium-gray, interbedded oolitic, stylolitic, cryptomicrobial, stromatolitic, and bioclastic limestone, dolomite, gypsum, siltstone, and fine-grained sandstone. Weathers light gray to yellowish brown. Maximum thickness is 130 m.
- Tml** Lower Red Member Red to reddish-brown siltstone, sandstone, limestone, shale, and minor gypsiferous siltstone. Weathers light reddish-brown. Maximum thickness is 52 m.
- Tm2** Lower Timpanopaw Member Dark-gray to reddish-brown pebbles to cobble conglomerate containing rounded clasts of limestone and chert derived from the Kaibab Formation, as well as red calcareous sandstone clasts. Weathers medium- to reddish-gray. Maximum thickness is 30 m.

Kaibab Formation (Permian)

- Pkh** Harriburg Member Light-gray, tan, cream-colored, oolitic, stromatolitic, and cherty dolomite, dolomitic limestone, bedded gypsum, and gypsiferous red beds (shale and claystone) in lowermost part. Weathers light to medium gray. Maximum thickness is 75 m.
- Pkf** Fossil Mountain Member Medium-gray, thick, massive, cherty limestone, and cherty dolomitic limestone. Contains brachiopods, bryozoans, crinoids, and microbial limestone. Weathers light gray. Maximum thickness is 100 m.
- PTw** Woods Ranch Member Tan, pink, red, and gray interbedded shale, dolomite, limestone, siltstone, shale, and interbedded impure gypsum. Weathers light reddish gray. Maximum thickness is 30 m.
- Ptb** Brady Canyon Member of the Torowap Formation (Permian) Gray, pinkish-gray, and lavender-gray, massive dolomitic limestone and cherty dolomitic limestone. Contains brachiopods and pelecypods. Weathers light to medium gray. Maximum thickness is 90 m.
- Pts** Seligman Member Buff to red interbedded siltstone, very fine-grained sandstone, and gypsum. Some siltstone and sandstone beds are gypsiferous. Dolomite and dolomitic sandstone are present in uppermost part. Weathers light reddish gray. Maximum thickness is 400 m.
- Ph** Hermit Formation (Permian) Pinkish-gray, thick-bedded, prominently cross-bedded sandstone interlayered with reddish sandy shale and fine-grained sandstone. Weathers light reddish gray. Maximum thickness is 305 m.
- PMbs** Bird Springs Formation (Permian to Mississippian) Light- to medium-grayish-brown, interbedded micritic, fusulinid limestone, sandy limestone, and dolomite; also contains sparse intervals of light-brown quartz arenite and shale. Chert nodules and layers of silicified fossils common in some intervals. Well defined beds range from thick to thin. Depicted only on geologic cross section, not exposed in the Blue Diamond SE Quadrangle.

- PMbs** Bird Springs Formation (Permian to Mississippian) Light- to medium-grayish-brown, interbedded micritic, fusulinid limestone, sandy limestone, and dolomite; also contains sparse intervals of light-brown quartz arenite and shale. Chert nodules and layers of silicified fossils common in some intervals. Well defined beds range from thick to thin. Depicted only on geologic cross section, not exposed in the Blue Diamond SE Quadrangle.

References

Aren, G.J., 1985. Geologic map and description of structure and stratigraphy. La Madre Mountain, Spring Mountains, Nevada. Geological Society of America Map and Chart Series MC-51, 17 p., 1 plate.

Bathurst, G.O., and Macchettie, M.A., 1977. Calcic soils and calcrites in the southwestern United States. U.S. Geological Survey Open-File Report 77-294, 165 p.

Basalis, H., and Reeside, J.B., Jr., 1921. Oil prospects in Washington County, Utah. U.S. Geological Survey Bulletin 726-C, pp. 87-107.

Brathwaite, C.J.R., 1983. Calcrite and other soils in Quaternary limestone: structures, processes, and applications. Journal of the Geological Society of London, v. 139, p. 305-363.

Burton, B.C., Heck, H.J., Secor, D.L., Vinciguerra, H.H., and Davis, G.A., 1974. Geology of the Spring Mountains, Nevada. Geological Society of America Bulletin, v. 85, p. 1013-1022.

Burford, B.C., and Davis, G.A., 1968. Mesozoic thrust faults and Cenozoic low-angle faults, Eastern Spring Mountains, Nevada, and Clark Mountains Thrust Complex, California. In Weide, D.L., and Faber, M.L., eds., This Extended Land: Geological Journeys in the Southern Basin and Range. Geological Society of America, Cordilleran Section, Field Trip Guidebook, p. 87-106.

Christensen, G.E., and Purcell, C., 1986. Correlation and age of Quaternary geology of the southwestern United States. In Weide, D.L., and Faber, M.L., eds., Soils and Quaternary geology of the southwestern United States: Geological Society of America Special Paper 203, p. 115-122.

Darton, N.H., 1910. A reconnaissance of parts of northwestern New Mexico and northern Arizona. U.S. Geological Survey Bulletin 435, 89 p.

Davis, G.A., 1973. Relations between the Keystone and Red Spring thrust faults, eastern Spring Mountains, Nevada. Geological Society of America Bulletin, v. 84, p. 2093-2116.

Gardner, L.R., 1972. Origin of Mormon Mesa caliche, Clark County, Nevada. Geological Society of America Bulletin, v. 83, p. 143-158.

Glock, W.S., 1929. Geology of the east-central part of the Spring Mountain range, Nevada. American Journal of Science, 5th series, v. 17, p. 208-241.

Gregory, H.E., and Williams, N.C., 1947. Zion National Monument, Utah: Geological Survey of America Bulletin, v. 58, p. 211-244.

Hewett, F.F., 1931. Geology and ore deposits of the Gooding Quadrangle, Nevada. U.S. Geological Survey Professional Paper 162, 172 p.

Latham, L.H., 1973. Calcium carbonate cementation of alluvial fans in southern Nevada. Geological Society of America Bulletin, v. 84, p. 3913-3928.

Longwell, C.P., Pampayan, E.H., Boyce, B., and Roberts, R.J., 1965. Geology and mineral deposits of Clark County, Nevada. Nevada Bureau of Mines and Geology Bulletin 62, 177 p.

Macchettie, M.A., 1985. Calcic soils of the southwestern United States. In Weide, D.L., and Faber, M.L., eds., Soils and Quaternary geology of the southwestern United States: Geological Society of America Special Paper 203, p. 1-21.

Moore, E.D., 1937. Research on Middle Permian strata of the Grand Canyon National Park. Carnegie Institute Washington Yearbook 36, p. 341-343.

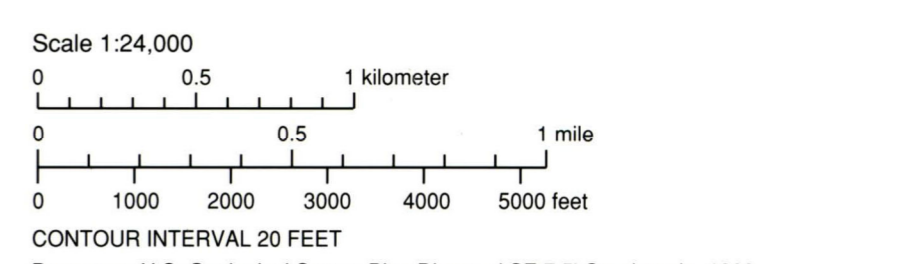
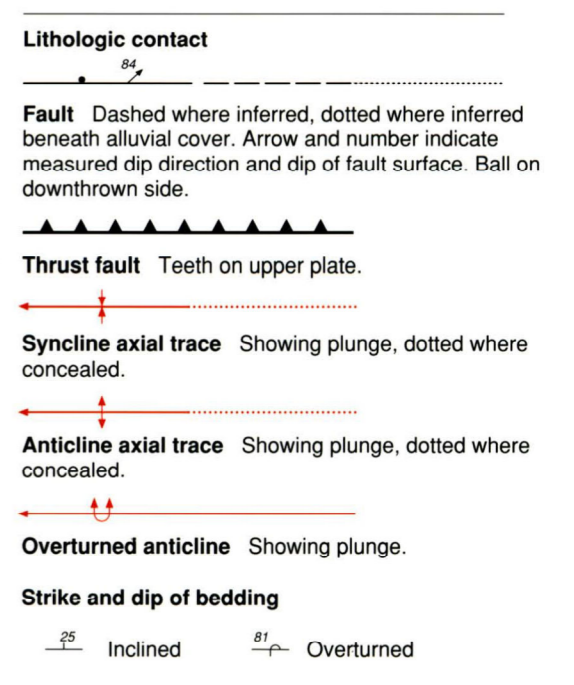
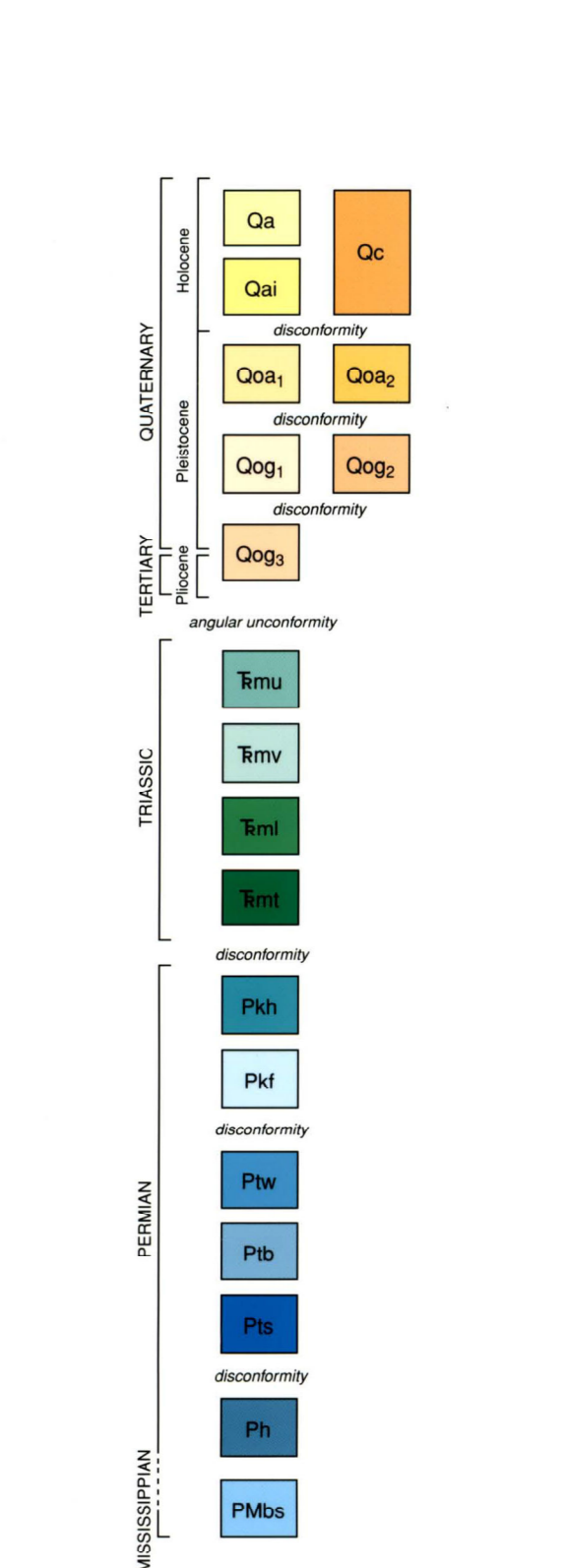
Sorrell, J.E., 1963. Structure and stratigraphy of the Whitmore area, Mohave County, Arizona. Dissertation Abstracts, v. 24, p. 702.

Sowers, J.M., 1985. Petrologic correlates of the Kyle Canyon alluvial fan (Ph.D. thesis). University of California, Berkeley, 159 p.

Sowers, J.M., Reheis, M.C., and McFadden, L.D., 1988. Rates of pedogenic calcium carbonate accumulation in limestone-derived soils of the Kyle Canyon alluvial fan preliminary data. In Weide, D.L., and Faber, M.L., eds., This Extended Land: Geological Journeys in the Southern Basin and Range. Geological Society of America, Cordilleran Section, Field Trip Guidebook, p. 26-28.

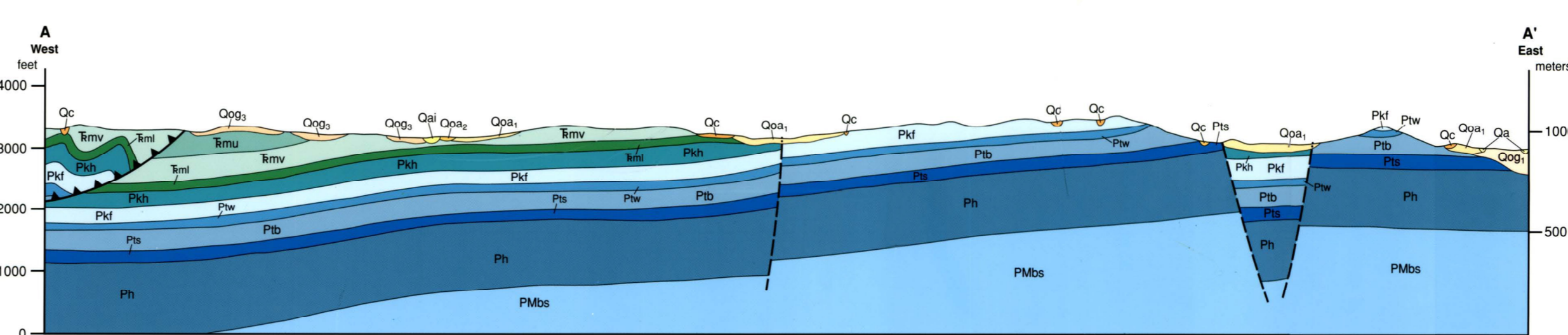
Spurr, J.E., 1963. Descriptive geology of Nevada south of the forty-first parallel and adjacent portions of California. U.S. Geological Survey Bulletin 208, 229 p.

Went, L.F., 1961. Geology of the Little Colorado Valley. American Journal of Science, 4th Series, v. 12, p. 401-413.



GEOLOGIC MAP OF THE BLUE DIAMOND SE QUADRANGLE, NEVADA

Michael D. Carr, Cheryl McDonnell-Canan, and David L. Weide
2000



Field work done from 1988 to 1997.
Field Review by: John Bell (NBMG), and Stephen Castor (NBMG)
Office Review by: John Bell (NBMG), Stephen Castor (NBMG), and Stephen Rowland (University of Nevada, Las Vegas)
First Edition, first printing 2000
Printed by Bell Industries, Sparks, NV
Edited by Dick Muewling
Cartography by Robert Chaney
Geologic mapping was supported by the University of Nevada, Las Vegas Department of Geoscience.
Nevada Bureau of Mines and Geology
University of Nevada, Mail Stop 178
Reno, Nevada 89557-0178
(775) 784-6691, ext. 2
www.nbmg.unr.edu, rfmgsales@unr.edu