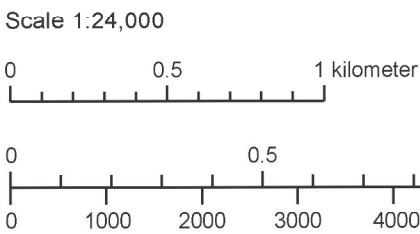


GEOLOGIC MAP OF THE NORTHEASTERN BULLFROG HILLS AND VICINITY, SOUTHERN NYE COUNTY, NEVADA

Katherine A. Connors, Steven I. Weiss, and Donald C. Noble

1998



CONTOUR INTERVAL 20 FEET, Springdale and Thirsty Canyon SW 7.5' Quadrangles
CONTOUR INTERVAL 40 FEET, Beatty and Beatty Mountain 7.5' Quadrangles

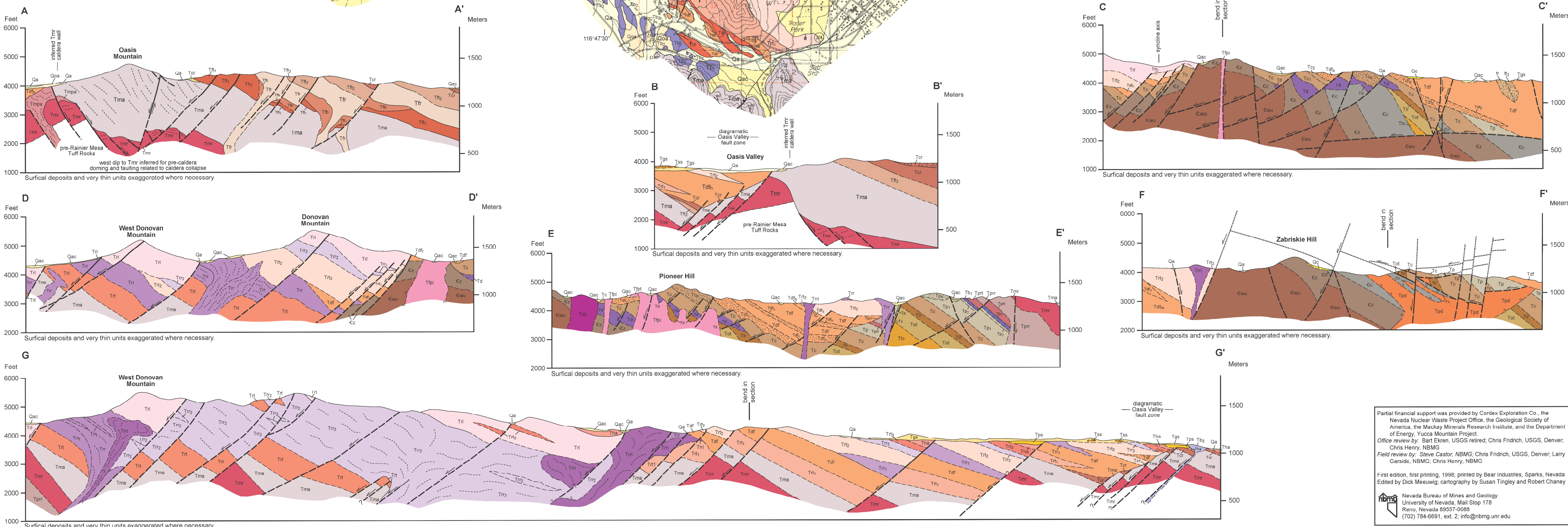
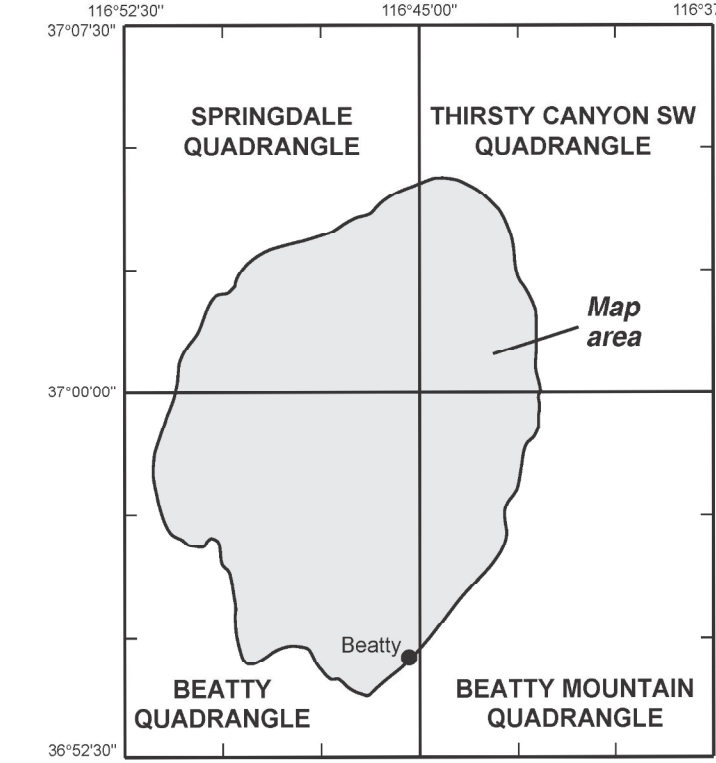
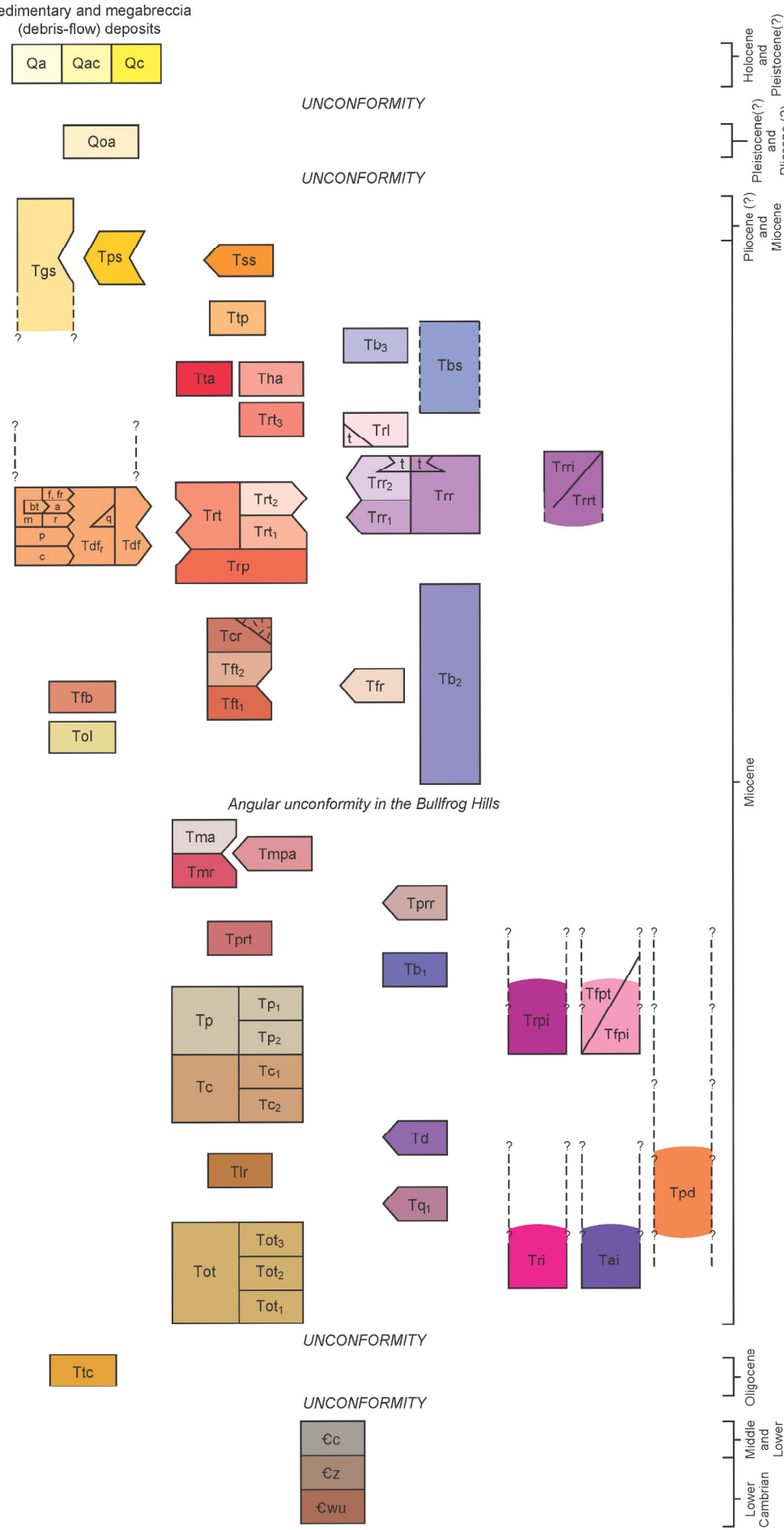
Topographic base map from the Beatty 1987, Beatty Mountain 1987, Springdale 1986, and Thirsty Canyon SW 1986 7.5' Quadrangles.

- Contact** Dashed where approximately located.
- Fault** Showing dip of fault; ball on downthrown side; dashed where approximately located, dotted where concealed.
- Syncline** Trace of axial surface, dashed where approximately located.
- Strike and dip of bedding.**
- Inclined
- Strike and dip of foliation in volcanic rocks.**
- Compaction foliation and layering in tuffs
- Inclined — Vertical — Approximate
- ⊙ Horizontal — Overturned
- Foliation in lavas and intrusive rocks
- Inclined — Vertical — Approximate
- Sample locations for isotopic age determinations.**
- Monolithologic fault talus breccia of Tor east of Oasis Valley.**
- Stipple indicates large blocks within debris-flow deposits and monolithologic bodies of breccia.**

DESCRIPTION OF MAP UNITS

- Qa** Alluvium (Quaternary)
- Qac** Alluvium and colluvium, undivided (Quaternary)
- Qc** Colluvium (Quaternary)
- Qoa** Older alluvium (Quaternary)
- Tgs** Gravels of Sober-Up Gulch (late Miocene and Pliocene?)
- Tps** Pumiceous siltstone, sandstone, conglomerate and tuff (late Miocene)
- Tsa** Spearhead Member of the Stonewall Tuff (late Miocene)
- Ttb** Pahute Mesa Tuff of the Thirsty Canyon Group
- Tbs** Basalt of Springdale Mountain (late Miocene)
- Tb2** Basalt lava flows and intrusive rocks
- Tb1** Air-fall tuff of Oasis Valley
- Tba** Air-fall tuff of Bullfrog Hills
- Rainbow Mountain Sequence**
- Trh** Rhyolite tuff #3
- Trf** Latite of Donovan Mountain
- Trn** Rhyolite dikes, plugs, and stocks
- Trs** Rhyolite lava flows, domes, and plugs, undivided
- Trn1** Rhyolite lava flows and domes
- Trh** Rhyolite tuff, undivided
- Trn2** Rhyolite tuff #2
- Trn1** Rhyolite lava flows #1
- Tdf** Debris-flow (megaregessica) deposits
- Trn1** Rhyolite tuff #1
- Tb** Pyroclastic and epiclastic deposits
- Tb1** Lava flow(s) of basaltic composition
- Tb2** Tuff of Cutoff Road (middle Miocene)
- Tuffs and Lava of Fleur de Lis Ranch (middle Miocene)**
- Tb1** Tuff of Fleur de Lis Ranch #2
- Tb2** Rhyolite lava of Fleur de Lis Ranch
- Tb3** Breccia
- Tb4** Tuff of Fleur de Lis Ranch #1
- Tb5** Marl, sandstone, and limestone of Oasis Mountain (Miocene)
- Timber Mountain Group (middle Miocene)**
- Tma** Ammonia Tanks Tuff
- Tma1** Ash-flow tuff and lava
- Tma2** Rainier Mesa Tuff
- Tma3** Pre-Rainier Mesa lava flows
- Tma4** Pre-Rainier Mesa tuff
- Tb1** Basalt lava flows (middle Miocene)
- Tp** Paintbrush Group (Miocene)
- Ts** Silicic dikes and plugs (middle Miocene)
- Tr** Rhyolite plug (middle Miocene)
- Tc** Crater Flat Tuff (middle Miocene)
- Td** Lava flows and flow breccia (middle Miocene)
- Tl** Lithic Ridge Tuff (middle Miocene)
- Tq** Quartz latite to low-silica rhyolite(?) lava flows and flow-breccia (Miocene)
- Tp1** Felsic porphyry dike (Miocene?)
- Tp2** Rhyolite dike or plug (Miocene)
- Tp3** Porphyritic dikes of intermediate composition (Miocene)
- Tma** Older ash-flow tuffs and subordinate sedimentary rocks, undifferentiated (Miocene?)
- Tc** Tius Canyon Formation (Oligocene)
- Cm** Carrara Formation (Middle and Lower Cambrian)
- Cz** Zabriskie Quartzite (Lower Cambrian)
- Cw** Wood Canyon Formation, Upper member (Lower Cambrian)

CORRELATION OF MAP UNITS



Partial financial support was provided by Cordex Exploration Co., the Nevada Nuclear Waste Project Office, the Geological Society of America, the Nevada Mineral Research Institute, and the Department of Energy, Yucca Mountain Project.

Office review by: Steve Castro, NBMG; Chris Fridrich, USGS, Denver; Chris Henry, NBMG.

Field review by: Steve Castro, NBMG; Chris Fridrich, USGS; Larry Canfield, NBMG; Chris Henry, NBMG.

First edition, first printing, 1998; printed by Bear Industries, Sparks, Nevada. Edited by Dick Meeuw; cartography by Susan Tingley and Robert Chaney.

Nevada Bureau of Mines and Geology
University of Nevada, Mail Stop 173
Reno, Nevada 89557-0173
(775) 784-6891, ext. 2; info@nbgm.unr.edu