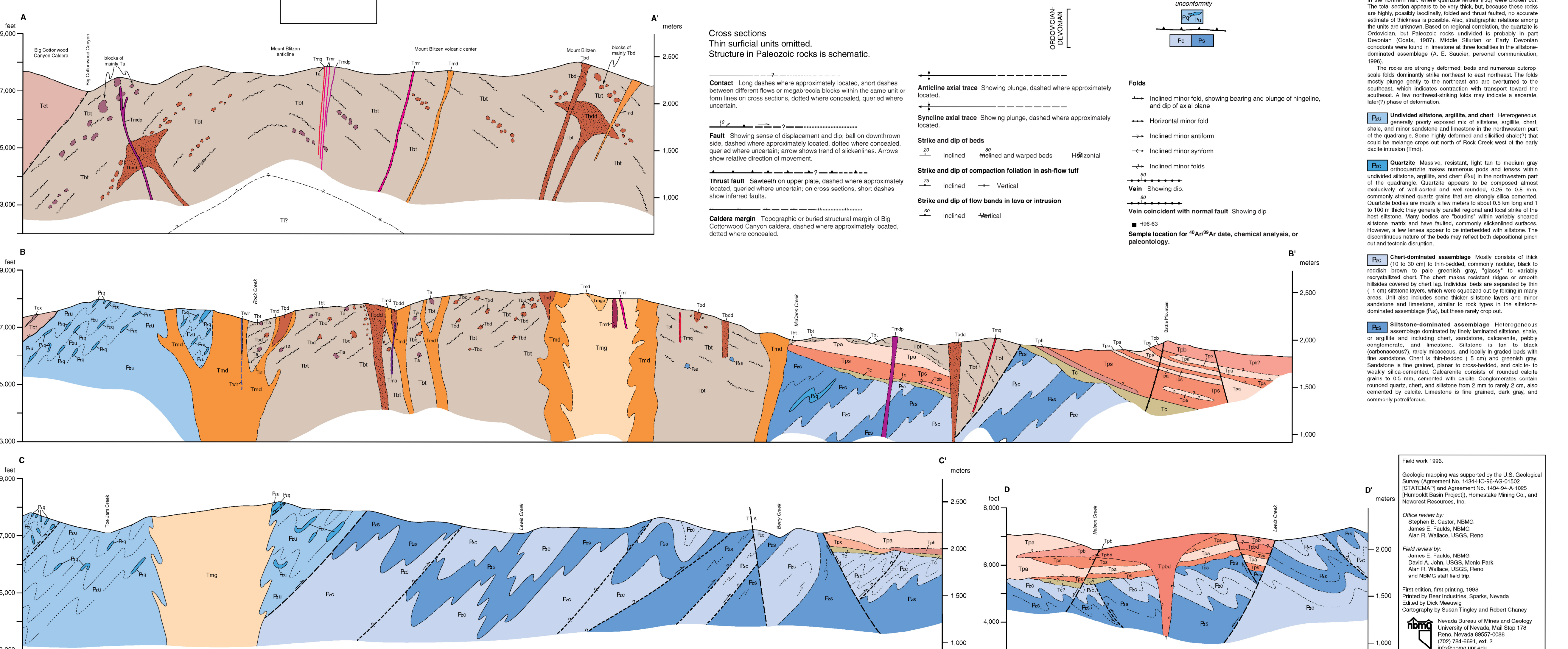
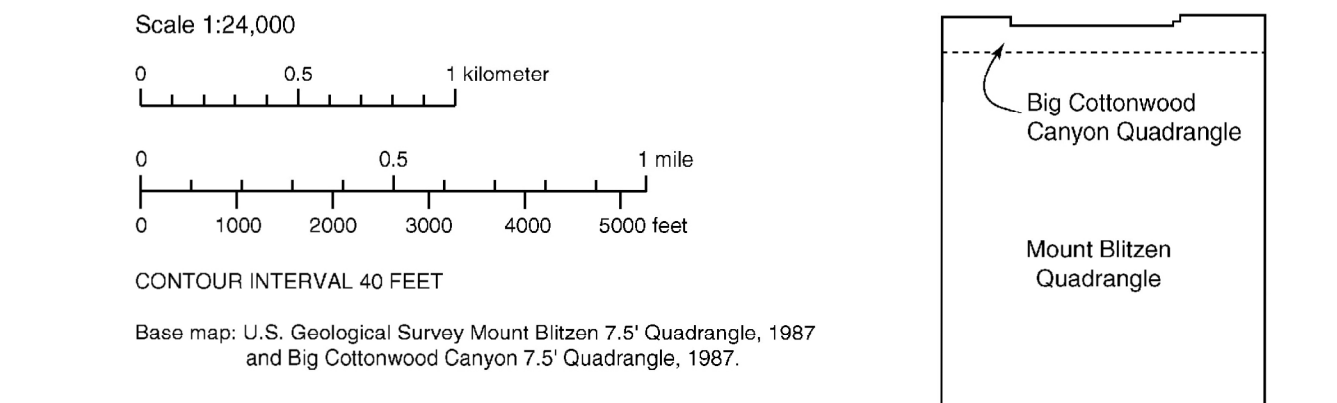


Channel deposits, Alluvial fans of Independence Valley, Tuff of Mount Blitzen, and other geological descriptions. Includes a legend for surficial deposits and a stratigraphic column.

GEOLOGIC MAP OF THE MOUNT BLITZEN QUADRANGLE, NEVADA Christopher D. Henry and David R. Boden 1998



Field work 1996, Geological map was supported by the U.S. Geological Survey (Agreement No. 1434-HQ-96-AG-01502) and Nevada Bureau of Mines and Geology (Agreement No. 1434-HQ-96-AG-01502). Includes acknowledgments and contact information.