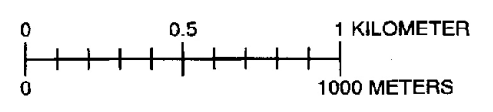
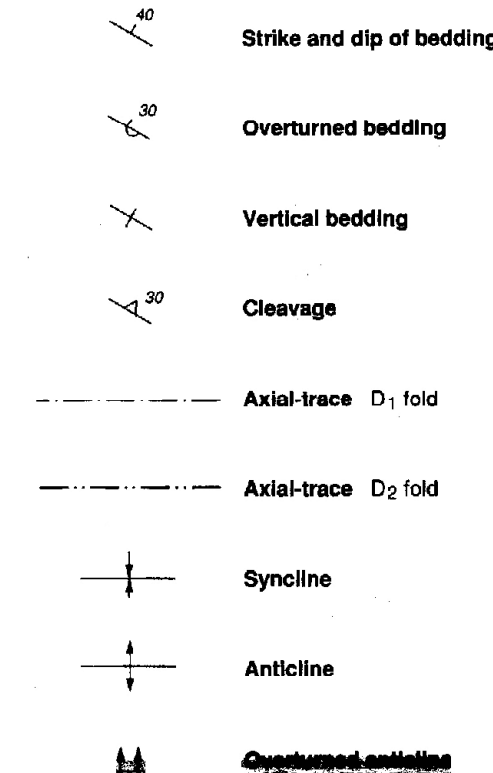


MAP SYMBOLS

Contact Dashed where approximately located.

High-angle Fault Dashed where approximately located, dotted where concealed; ball on downthrown side where relative displacement known; arrow indicate relative lateral displacement when known; A and T indicate away and toward relationships of strike slip faults on cross sections.

Thrust fault Teeth on upper plate; dashed where approximately located, dotted where concealed.



Scale 1:24,000

CONTOUR INTERVAL 40 FEET

Base map: U.S. Geological Survey Bettles Well 7 1/2' Quadrangle, 1980

REFERENCES

Eken, E. B., Byers, F. M., Jr., Hardyman, R. F., Marvin, R. F., and Silberman, M. L., 1980. Stratigraphy, preliminary petrology, and some structural features of Tertiary volcanic rocks in the Gabbs Valley and Gila Ranges, Mineral County, Nevada. U.S. Geological Survey Bulletin 1464, 54 p.

Oldow, J. S., 1981. Structure and stratigraphy of the Luning subduction and the kinematics of allochthon emplacement, Pilot Mountains, west-central Nevada. Geological Society of America Bulletin, v. 92, Part I, p. 888-911, Part II, p. 1647-1659.

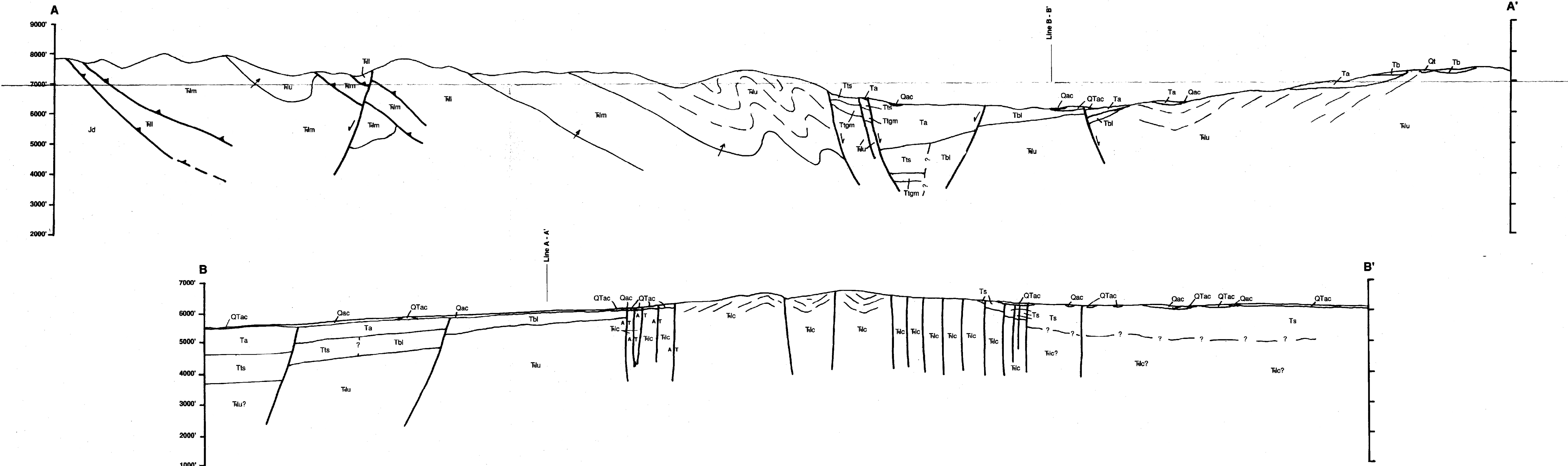
Oldow, J. S., and Baret, R. L., 1987. Early to Middle(?) Jurassic extensional tectonism in the western Great Basin: Growth faulting and synorogenic deposition of the Dunlap Formation. Geology, v. 15, p. 740-743.

Proffett, J. M., Jr., 1977. Cenozoic geology of the Yerington district, Nevada, and implications for the nature and origin of Basin and Range faulting. Geological Society of America Bulletin, v. 88, p. 247-266.

Drift reviewed by:
R. F. Hardyman, USGS
L. J. Garside, NBMG
D. A. Davis, NBMG

First edition, first printing, 1992. 500 copies
Printed by A. Carlisle, Reno, NV
Edited by Dick Mueuwig
Cartography by Kris Pizarro
Typography by Rayetta Buckley and Kris Pizarro

NBMG Nevada Bureau of Mines and Geology
University of Nevada, Mail Stop 178
Reno, Nevada 89557-0088



GEOLOGIC MAP OF THE BETTLES WELL QUADRANGLE, NEVADA

John S. Oldow and Javan N. Meinwald

1992