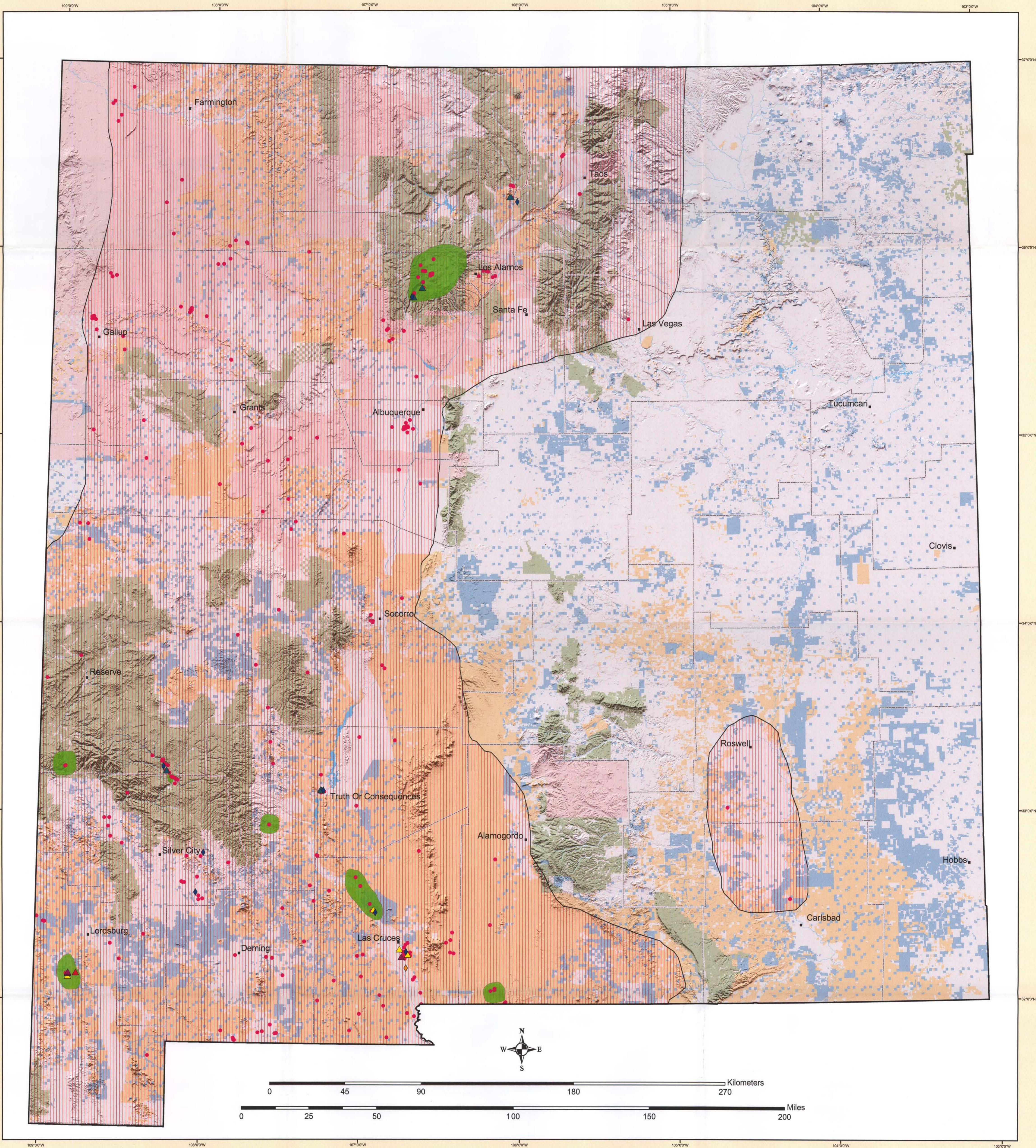


# New Mexico Geothermal Resources



- Legend**
- City/Town
  - County Boundaries
  - River/Stream
  - ☪ Lakes and Reservoirs
- Geothermal Categories**
- ▲ Greenhouse
  - ▲ Geothermal Power Plant
  - ▲ Space Heating
  - ▲ District Heating
  - ▲ Aquaculture
  - ▲ Spas/Resorts/Recreation Sites
  - Geothermal Springs/Wells (> 30 degrees C)
  - Areas with Potential for Electrical Generation
  - Areas with Potential for Direct Use Applications

- Ownership**
- Private Lands
  - Bureau of Land Management and other
  - Federal Lands
  - State Lands
  - Native American Lands
  - U.S. Forest Service

Southwest Technology Development Institute  
New Mexico State University  
Las Cruces, New Mexico



**INEL SPATIAL ANALYSIS LABORATORY**  
APPLYING TECHNOLOGY TO MEET ENVIRONMENTAL NEEDS

Prepared for:  
U.S. Department of Energy  
Assistant Secretary for Energy Efficiency and Renewable Energy  
Office of Wind and Geothermal Technologies  
Under Contract AC07-99ID13727

