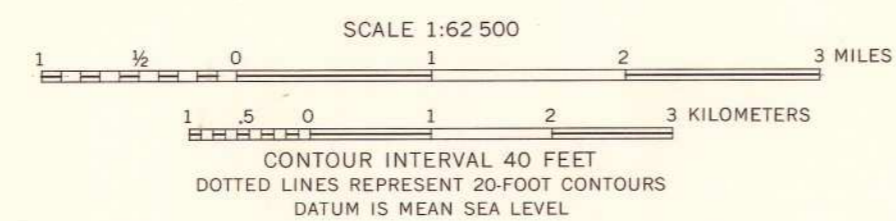
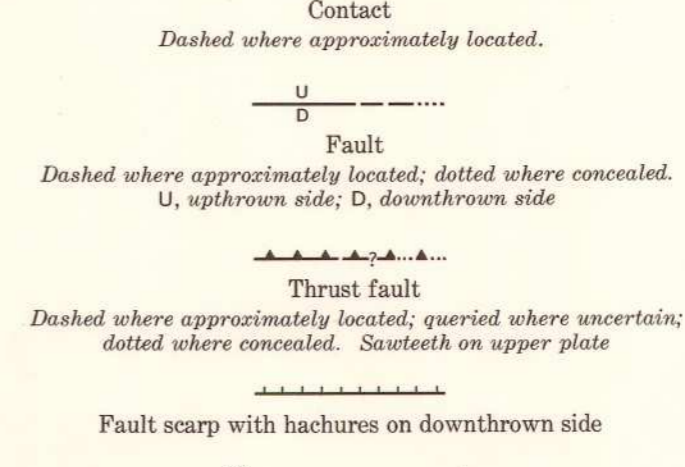
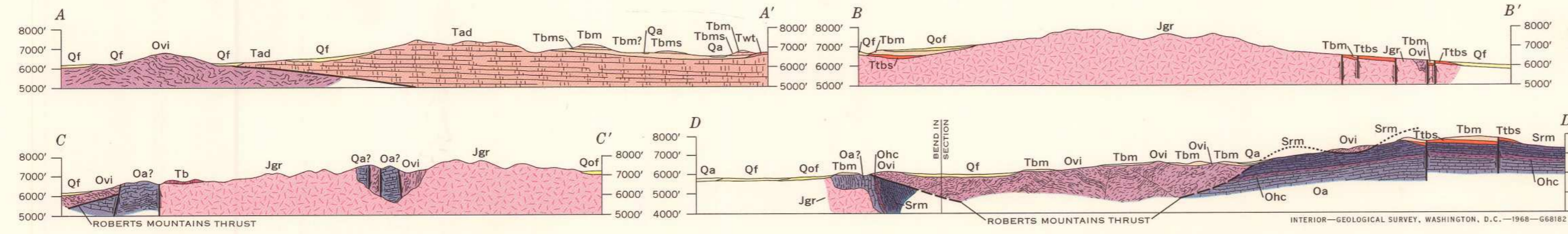


Base by U.S. Geological Survey, 1961



Geology mapped in 1966-67



GEOLOGIC MAP OF THE SPENCER HOT SPRINGS QUADRANGLE, LANDER COUNTY, NEVADA

By
Edwin H. McKee
1968

Nevada (Spencer Hot Springs quad.) Geol. 1:62,500. 1968.



For sale by U.S. Geological Survey, price \$100

M(200)
1968
770
C.1