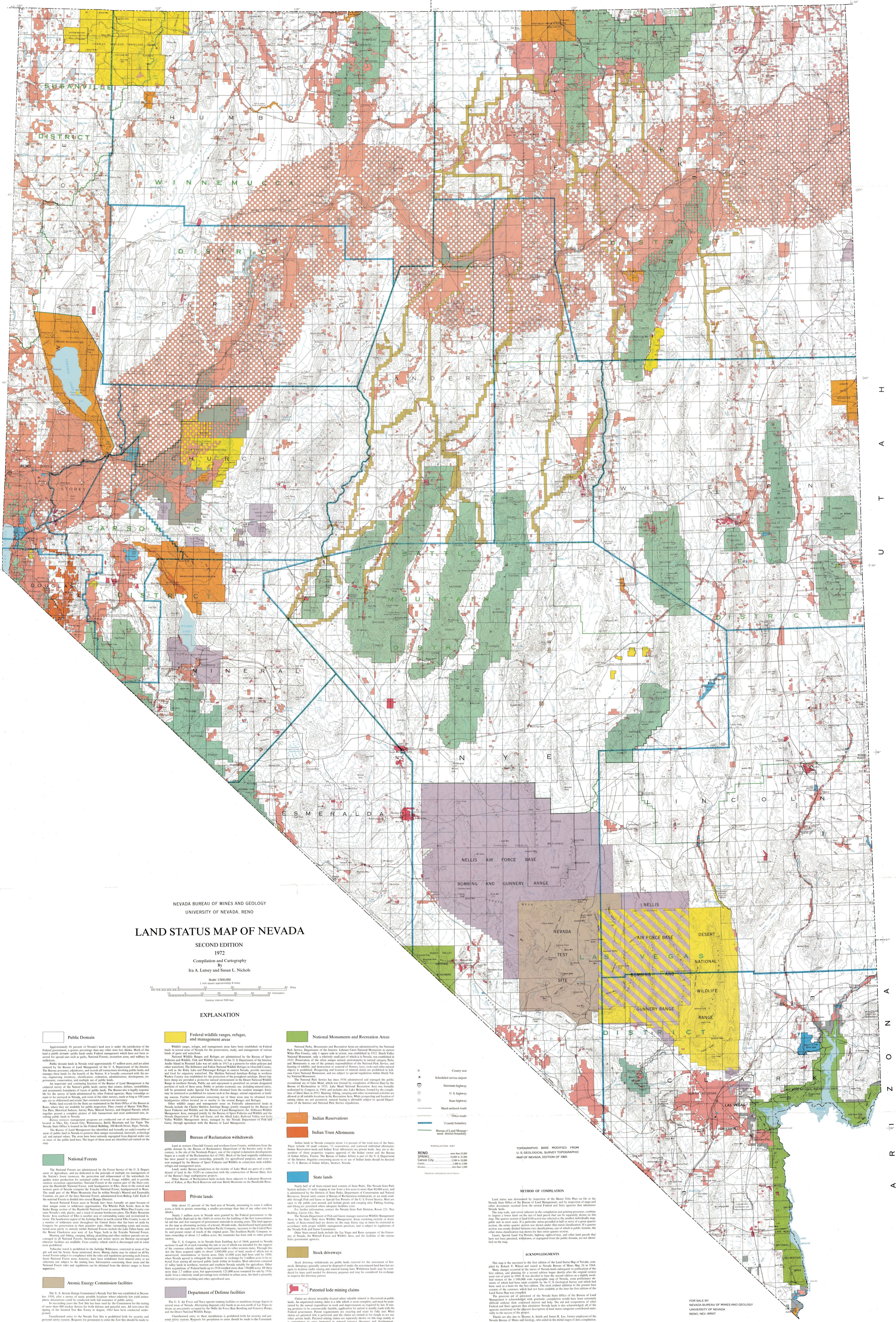


O R E G O N I D A H O

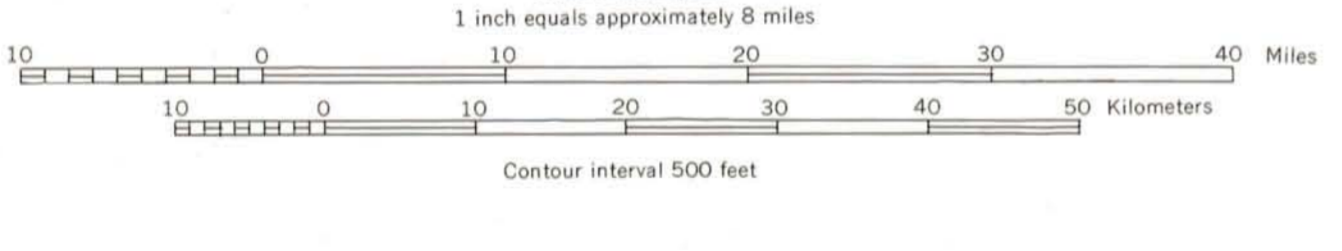
C A L I F O R N I A A R I Z O N A



NEVADA BUREAU OF MINES AND GEOLOGY UNIVERSITY OF NEVADA, RENO

LAND STATUS MAP OF NEVADA

SECOND EDITION
1972
Compilation and Cartography
By
Ira A. Lutsey and Susan L. Nichols



EXPLANATION

- Public Domain**
Approximately 60 percent of Nevada's land area is under the jurisdiction of the Federal Government, a greater percentage than any other state in the United States. Much of this land is public domain, which is land owned by the United States Government. Public domain lands are those lands which have not been reserved for special use such as public, National Forest, recreation, and military reservations.
- Federal wildlife ranges, refuges, and management areas**
Public domain lands in Nevada total approximately 47 million acres, and are administered by the Bureau of Land Management of the U. S. Department of the Interior. The Bureau processes, administers, and manages public lands, and also manages the lands for the benefit of the Nation. It is broadly concerned with the survey, engineering, inventory, classification, evaluation, administration, development, and management of the public lands. The Bureau also administers the National System of Public Lands, which includes the National System of Public Lands, the National System of Public Lands, and the National System of Public Lands.
- National Monuments and Recreation Areas**
National Parks, Monuments, and Recreation Areas are administered by the National Park Service, Department of the Interior. National Park Service lands include the White Pine County, only a portion of which is in Nevada. National Park Service lands are those lands which are administered by the National Park Service, Department of the Interior. National Park Service lands are those lands which are administered by the National Park Service, Department of the Interior.
- Indian Reservations**
Indian lands in Nevada comprise about 1.6 percent of the total area of the State. These lands are administered by the Bureau of Indian Affairs, Department of the Interior. Indian lands are those lands which are administered by the Bureau of Indian Affairs, Department of the Interior.
- State Lands**
Nearly half of all State-owned land consists of State Parks. The Nevada State Park System is administered by the Nevada State Park System, Department of Conservation and Natural Resources. State lands are those lands which are administered by the Nevada State Park System, Department of Conservation and Natural Resources.
- Private Lands**
Only about 17 percent of the land area of Nevada, according to some 8 million acres, is held in private ownership. A smaller percentage than that of any other land in the United States. Private lands are those lands which are administered by the Nevada State Park System, Department of Conservation and Natural Resources.
- Stock Driveways**
Stock driveways are those roads which are used for the movement of livestock. Stock driveways are those roads which are used for the movement of livestock. Stock driveways are those roads which are used for the movement of livestock.
- Department of Defense Facilities**
The U. S. Air Force and Navy operate training facilities in various portions of Nevada. Department of Defense facilities are those lands which are administered by the Nevada State Park System, Department of Conservation and Natural Resources.
- Atomic Energy Commission Facilities**
The U. S. Atomic Energy Commission's Nevada Test Site was established in 1951. Atomic Energy Commission facilities are those lands which are administered by the Nevada State Park System, Department of Conservation and Natural Resources.

POPULATION KEY

RENO	more than 20,000
SPRINGS	10,000 to 20,000
Carson City	2,000 to 10,000
Other	1,000 to 2,000
Unincorporated	less than 1,000

TOPOGRAPHIC BASE MODIFIED FROM
U. S. GEOLOGICAL SURVEY TOPOGRAPHIC
MAP OF NEVADA, EDITION OF 1968

METHOD OF COMPILATION
Land status was determined by inspection of the Master Title Plans on file at the Nevada State Office of the Bureau of Land Management, and by inspection of maps and other documents received from the several Federal and State agencies that administer Nevada lands.

ACKNOWLEDGMENTS
This map is the result of the first edition of the Land Status Map of Nevada, compiled by Richard V. Wilson and issued as Nevada Bureau of Mines Map No. 25 in 1964. Many changes occurred in the status of Nevada lands subsequent to publication of the first edition, and planning for a second edition began shortly after the original version went out of print in 1967. It was decided to have the second edition as a slightly modified version of the 1964 map, with only those changes which were necessary to reflect the changes which had occurred since the first edition. The most recent additions to the present Land Status Map were compiled by the Nevada State Office of the Bureau of Land Management.

FOR SALE BY
NEVADA BUREAU OF MINES AND GEOLOGY
UNIVERSITY OF NEVADA
RENO, NEV. 89567