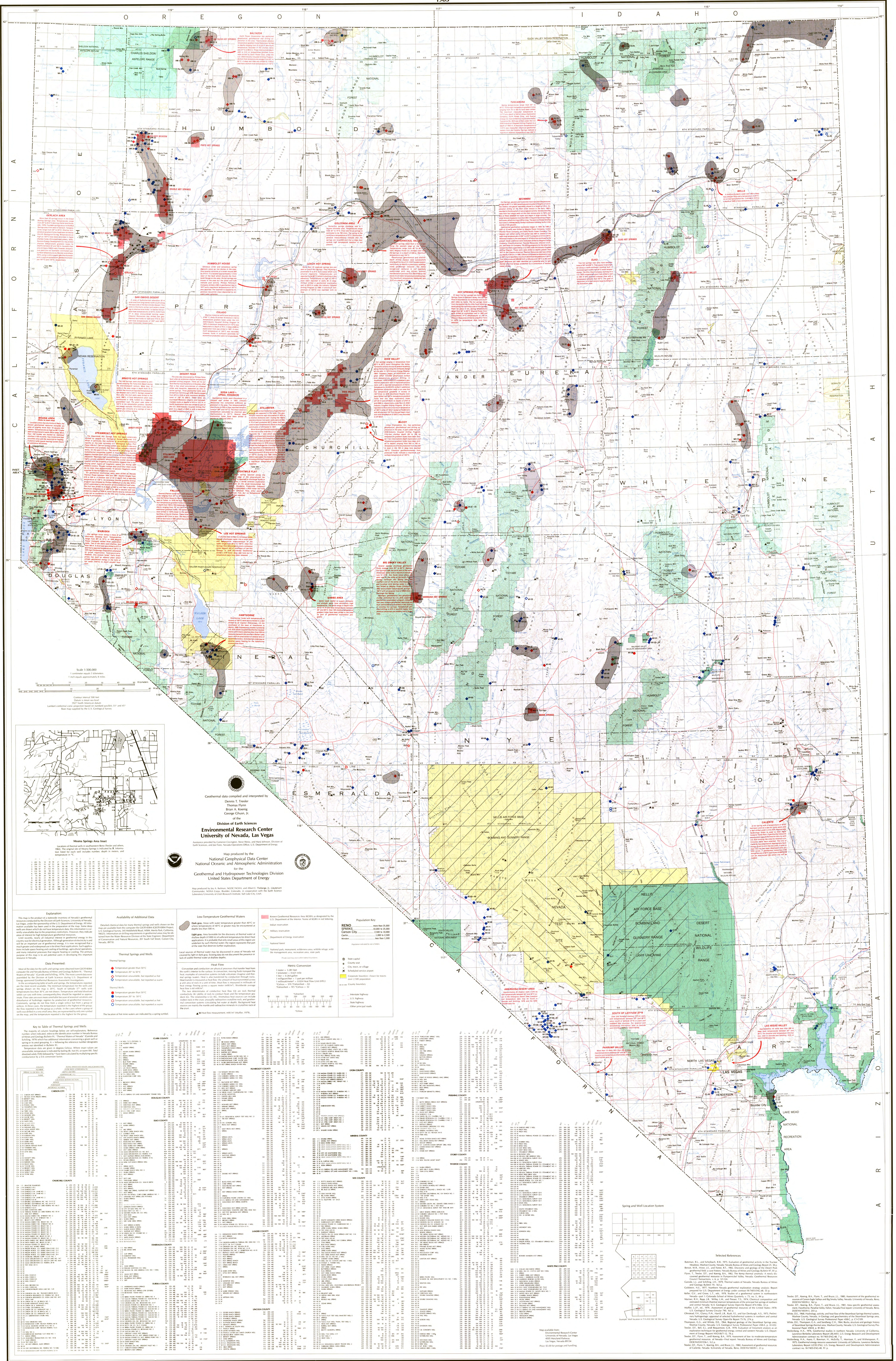


# Geothermal Resources of Nevada

Geothermal Resources of Nevada  
1983



Geothermal data compiled and interpreted by  
Dennis Traylor  
Thomas Flynn  
Brian A. Scaring  
George Chou, Jr.  
in the  
Division of Earth Sciences  
**Environmental Research Center**  
University of Nevada, Las Vegas

Map produced by the  
National Geophysical Data Center  
National Oceanic and Atmospheric Administration  
for the  
Geothermal and Hydropower Technologies Division  
United States Department of Energy

Map scale: 1:500,000  
Scale bar: 0 to 100 miles  
North arrow

**Explanation:**  
This map is the product of a statewide inventory of Nevada's geothermal resources. The inventory was conducted by the Environmental Research Center, University of Nevada, Las Vegas, in cooperation with the U.S. Department of Energy, Geothermal and Hydropower Technologies Division. The map shows the distribution of geothermal resources in Nevada, based on the results of a statewide geophysical survey conducted in 1979-1980. The map is color-coded to show the potential for geothermal resources, with red indicating high potential, orange indicating moderate potential, yellow indicating low potential, and green indicating very low potential. The map also shows the locations of geothermal wells and the distribution of geothermal resources in Nevada.

**Availability of Additional Data:**  
Detailed geothermal data for the Snake Range, Nevada-Nye, and Great Basin basins are available from the Environmental Research Center, University of Nevada, Las Vegas. The data include geophysical survey results, geothermal well logs, and geothermal resource estimates. The data are available for use by researchers and industry alike.

**Low-Temperature Geothermal Water:**  
Low-temperature geothermal water is defined as water with a temperature of 40°C or higher and a salinity of less than 10,000 mg/l. This type of water is found in the Snake Range, Nevada-Nye, and Great Basin basins. It is used for direct use applications, such as space heating and industrial processes.

**Thermal Springs and Wells:**  
Thermal springs and wells are defined as natural or man-made openings in the earth's crust that discharge water at a temperature of 40°C or higher. The map shows the locations of thermal springs and wells in Nevada, with red dots indicating high-temperature wells and blue dots indicating low-temperature wells.

**Population Key:**  
The population key shows the population of major cities in Nevada. Reno has a population of 188,000, Carson City has a population of 55,000, and Las Vegas has a population of 450,000.

**Key to Table of Thermal Springs and Wells:**  
The table lists thermal springs and wells in Nevada, organized by county. Each entry includes the well name, location, and production data. The table is organized into columns for county, well name, location, and production data.

County	Well Name	Location	Production Data
CLATSOP COUNTY	...	...	...
CHUBBUCK COUNTY	...	...	...
CLATSOP COUNTY	...	...	...
CHUBBUCK COUNTY	...	...	...
...	...	...	...

**Selected References:**  
Barnett, R. J., and Schuchart, R. J. 1975. Evaluation of geothermal activity in the Snake Range, Nevada. *Geothermal Resources Council Report* 75-10. 10 p.  
Barnett, R. J., and Schuchart, R. J. 1976. Geothermal resources of the Snake Range, Nevada. *Geothermal Resources Council Report* 76-10. 10 p.  
Barnett, R. J., and Schuchart, R. J. 1977. Geothermal resources of the Snake Range, Nevada. *Geothermal Resources Council Report* 77-10. 10 p.  
Barnett, R. J., and Schuchart, R. J. 1978. Geothermal resources of the Snake Range, Nevada. *Geothermal Resources Council Report* 78-10. 10 p.  
Barnett, R. J., and Schuchart, R. J. 1979. Geothermal resources of the Snake Range, Nevada. *Geothermal Resources Council Report* 79-10. 10 p.  
Barnett, R. J., and Schuchart, R. J. 1980. Geothermal resources of the Snake Range, Nevada. *Geothermal Resources Council Report* 80-10. 10 p.  
Barnett, R. J., and Schuchart, R. J. 1981. Geothermal resources of the Snake Range, Nevada. *Geothermal Resources Council Report* 81-10. 10 p.  
Barnett, R. J., and Schuchart, R. J. 1982. Geothermal resources of the Snake Range, Nevada. *Geothermal Resources Council Report* 82-10. 10 p.  
Barnett, R. J., and Schuchart, R. J. 1983. Geothermal resources of the Snake Range, Nevada. *Geothermal Resources Council Report* 83-10. 10 p.