



← W — LINE: 2
 LEGEND: SP 81
 ▽ INTERSECTIONS TO
 [V] VELOCITY ANALYSIS SP 11
 DATUM PLANE: 4075'
 700%, DYNAMITE

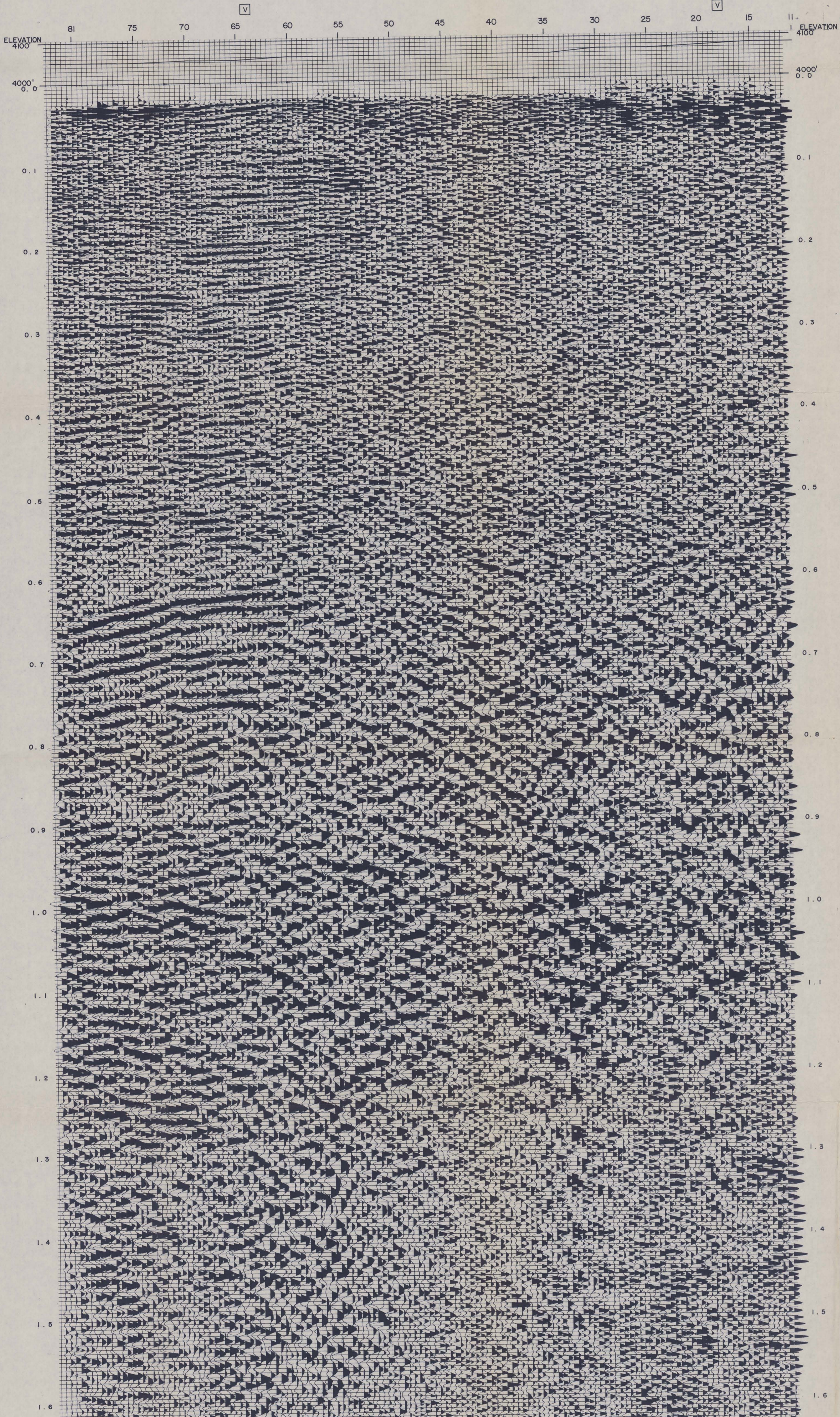
CHEVRON
 AREA: WASHOE CO., NEVADA
 PROCESSED BY: D. G. DATE: SEPT. 27, 1976
 DENVER DIGITAL CENTER JOB NUMBER: 358
 WESTERN GEOPHYSICAL CO. REEL NUMBER: 80077

RECORDING DATA
 PARTY NUMBER 401
 AMPLIFIER DDS-888
 FORMAT SEG-C
 ENERGY SOURCE DYNAMITE
 FILTER 80/18-OUT
 CHARGE 0.5- 2 LBS. AT 10-18 FT.
 SAMPLE RATE 0.5 MS.
 SP INTERVAL 33 FT.
 GROUP INTERVAL 33 FT.
 SPREAD 99'-526'
 NO. SEIS/GROUP 1
 DATE SHOT AUG. 9, 1976

PROCESSING SEQUENCE - PARAMETERS
 1 EDIT - GEOPHONE AMPLITUDE
 4 CDP GATHERS - STATICS COMPUTED
 (REPLACEMENT VELOCITY: 5800 FT./SEC.)
 5 DECONVOLUTION
 TIME VARIANT MINIMUM PHASE INVERSE FILTER
 AUTO. CORR. INT. : 25-1760 MS.
 PREDICTIVE DISTANCE : 2ND ZERO CROSSING.
 OPERATOR LENGTH : 25 MS.
 TIME ZONE : 0.0 - 1.8 SEC.
 6 AUTOSTATISTICS
 * SOURCE/REC. WINDOW LENGTH 700 MS.
 - CDF. MAXIMUM SHIFT 6 MS.
 7 VELAN™ (VELOCITY ANALYSIS)
 8 NMO AND STATICS
 9 CDP STACK
 * STRAIGHT COHERENCY WEIGHTED
 10 TIME VARIANT FILTER

TIME ZONE	L.C. (CPS) H.C.
0.0 - 0.4 SEC.	64 OUT
0.4 - 0.65 SEC.	50 200
0.65 - 1.8 SEC.	OUT 100

 11 DISPLAY (GEOSPACE AMPLIFIER)
 ADDITIONAL PROCESSING AND/OR COMMENTS
 2 ZIPPER
 3 COPY

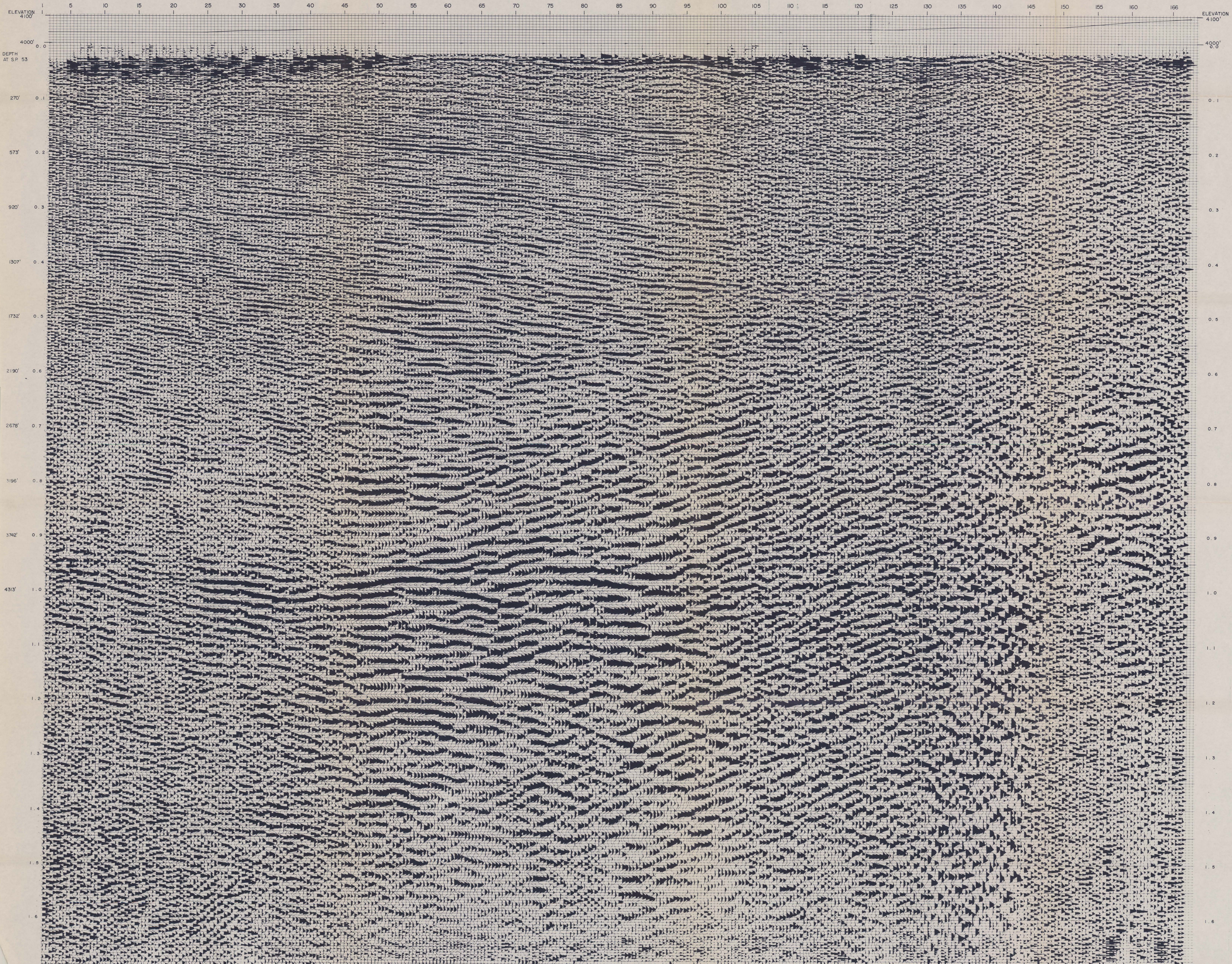


WESTERN
LITTON GEOPHYSICAL

SAN EMIDIO
MAP NO. M50547
FILE NO. B5-L

LINE # 2

← W — LINE: 1
 LEGEND: SP TO
 ▽ INTERSECTIONS TO
 [V] VELOCITY ANALYSIS SP 166
 DATUM PLANE: 4075'
 700%, DYNAMITE



CHEVRON
 AREA: WASHOE CO., NEVADA
 PROCESSED BY: D. G. DATE: SEPT 27, 1976
 DENVER DIGITAL CENTER JOB NUMBER: 208
 WESTERN GEOPHYSICAL CO. REEL NUMBER: 94391

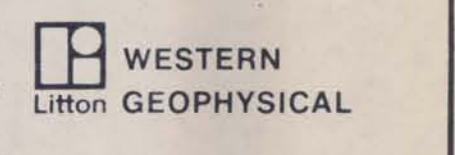
RECORDING DATA

PARTY NUMBER 401
 AMPLIFIER 008-888
 FORMAT SEG-C
 ENERGY SOURCE DYNAMITE
 FILTER 80/18-OUT
 CHARGE 0.5 - 2 LBS. AT 18 FT.
 SAMPLE RATE 0.5 MS
 SP INTERVAL 33 FT.
 GROUP INTERVAL 33 FT.
 SPREAD 66 - 495
 NO. SEIS/GROUP 1
 DATE SHOT AUG 5, 1976

PROCESSING SEQUENCE - PARAMETERS

1. EDIT - GEOPHONE AMPLITUDE
 4. CDP GATHERS - STATICS COMPUTED
 (REPLACEMENT VELOCITY: 5800 FT./SEC.)
 5. DECONVOLUTION
 TIME VARIANT MINIMUM PHASE INVERSE FILTER
 AUTO CORR. INT. 25-1750 MS.
 PREDICTIVE DISTANCE: 2ND ZERO CROSSING
 OPERATOR LENGTH: 25 MS.
 TIME ZONE: 0.0-1.8 SEC.
 6. AUTOSTATICS
 * SOURCE/REC. WINDOW LENGTH 700 MS.
 _ CDP MAXIMUM SHIFT 6 MS.
 7. VELAN™ (VELOCITY ANALYSIS)
 8. NMO AND STATICS
 9. CDP STACK
 * STRAIGHT _ COHERENCY _ WEIGHTED
 10. TIME VARIANT FILTER
 TIME ZONE L.G. (GPS) H.C.
 0.0 - 0.4 SEC. 64 OUT
 0.4 - 0.65 SEC. 50 200
 0.65 - 1.8 SEC. OUT 100

11. DISPLAY
 (GEOSPACE AMPLIFIER)
 ADDITIONAL PROCESSING AND/OR COMMENTS
 2 ZIPPER
 3 COPY



SAN EMIDIO
 MAP NO. 495348
 FILE NO. 05

LINE #1

← W — LINE: 3

LEGEND: SP 80
INTERSECTIONS TO
VELOCITY ANALYSIS SP 1

DATUM PLANE: 4075

700%, DYNAMITE

CHEVRON

AREA: WASHOE CO., NEVADA
PROCESSED BY: D. G. DATE: SEPT. 27, 1976
DENVER DIGITAL CENTER JOB NUMBER: 358
WESTERN GEOPHYSICAL CO. REEL NUMBER: 89941

RECORDING DATA

PARTY NUMBER 401
AMPLIFIER DDS-888
FORMAT SEG-C
ENERGY SOURCE DYNAMITE
FILTER 80/18-OUT
CHARGE 0.5-2 LBS. AT 10-18 FT.
SAMPLE RATE 0.5 MS.
SP INTERVAL 33 FT.
GROUP INTERVAL 33 FT.
SPREAD 99'-528'
NO. SEIS/GROUP 1
DATE SHOT AUG 11, 1976

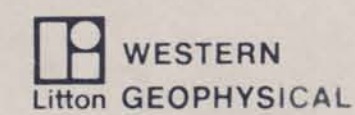
PROCESSING SEQUENCE - PARAMETERS

1 EDIT - GEOPHONE AMPLITUDE
4 CDP GATHERS - STATICS COMPUTED
(REPLACEMENT VELOCITY: 5800 FT./SEC.)
5 DECONVOLUTION
TIME VARIANT MINIMUM PHASE INVERSE FILTER
AUTO. CORR. INT : 25-1760 MS.
PREDICTIVE DISTANCE : 2ND ZERO CROSSING
OPERATOR LENGTH : 25 MS.
TIME ZONE : 0.0-1.8 SEC.
6 AUTOSTATICS
SOURCE/REC. WINDOW LENGTH 700 MS.
CDF MAXIMUM SHIFT 6 MS.
7 VELAN™ (VELOCITY ANALYSIS)
8 NMO AND STATICS
9 CDP STACK
STRAIGHT COHERENCY WEIGHTED
10 TIME VARIANT FILTER
TIME ZONE L.C. (CPS) H.C.
0.0-0.4 SEC. 64 OUT
0.4-0.65 SEC. 50 200
0.65-1.8 SEC. OUT 100

11 DISPLAY (GEOSPACE AMPLIFIER)

ADDITIONAL PROCESSING AND/OR COMMENTS

2 ZIPPER
3 COPY



SAN EMIDIO
MAP NO MS0546
FILE NO B5-L

LINE #3

