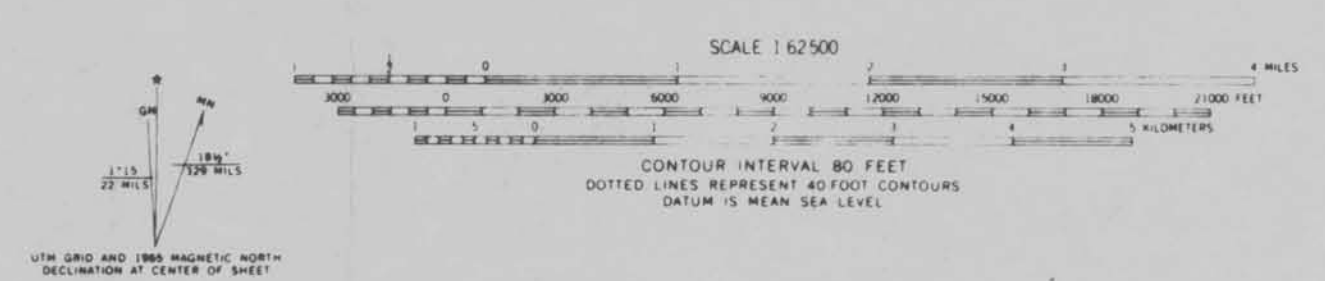


- LEGEND:**
- ▲ Stations
 - Earthquakes detected during first array, 16-30 June '77.
 - Earthquakes detected during second array, 9-20 July '77



EARTH POWER PRODUCTION COMPANY TULSA, OKLAHOMA	
MICROEARTHQUAKE SURVEY	
BALTAZOR-McGEE GEOTHERMAL PROSPECTS HUMBOLDT COUNTY, NEVADA	
DATE: OCT. 4, 1978	DRAWN BY: J.R.T. & T.L.G.
SCALE: 1:62,500	SURVEY:

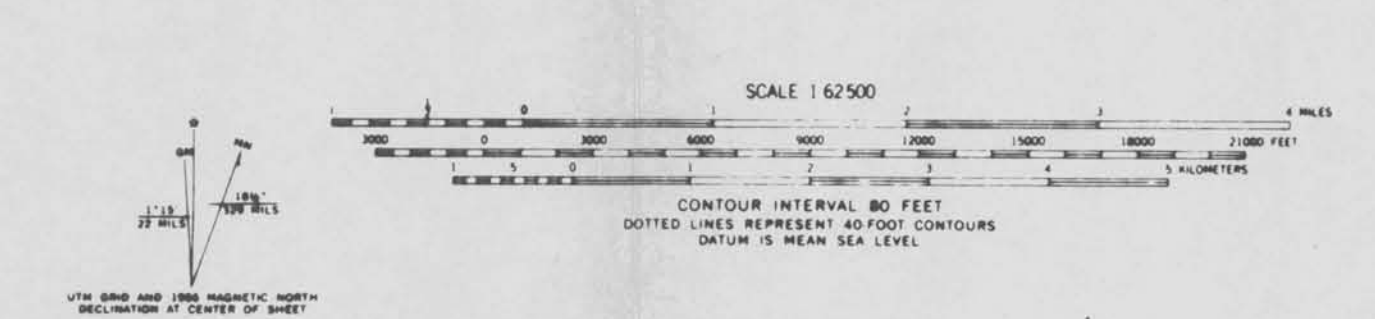
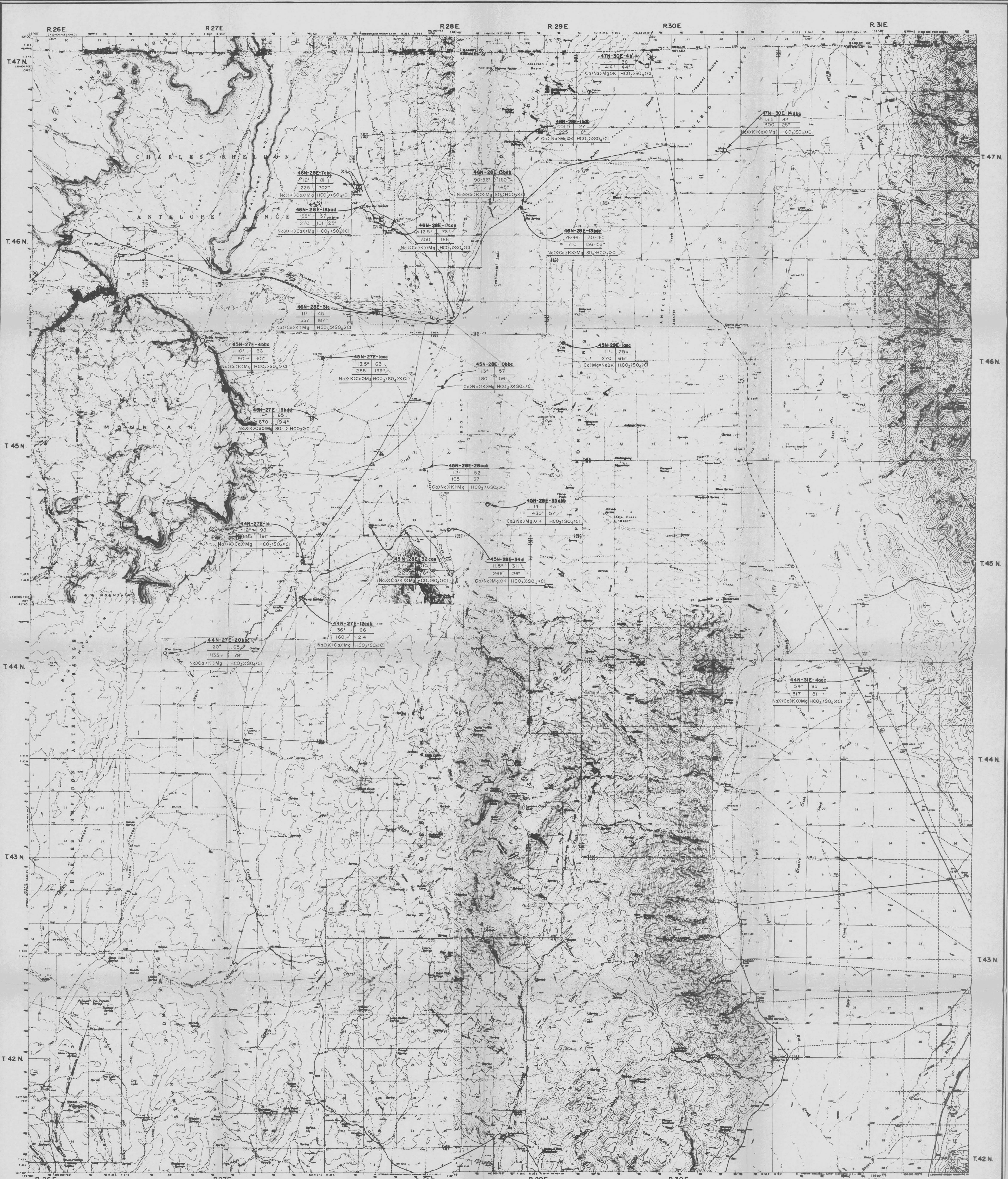


PLATE: SELECTED PHYSICAL AND CHEMICAL CHARACTERISTICS OF GROUND WATERS, CONTINENTAL LAKE - PUEBLO VALLEY REGION, NEVADA.

LOCATION
 T°C SAMPLE 5.0 Mg/l
 TDS mg/l T°C Na+K Co
 Mg, Ca, Na+K Mg, Ca, Na+K

- WELL
- SPRING
- FLOWING WELL
- X UNSUCCESSFUL DATA POINT (DRY, ABAND.) 10/77

- APPROXIMATELY EQUAL
- 1 1 to 1.2 TIMES (BY WEIGHT CONCENTRATION)
- 2 1.2 to 3 TIMES
- 3 3 to 10 TIMES
- 4 MORE THAN 10 TIMES

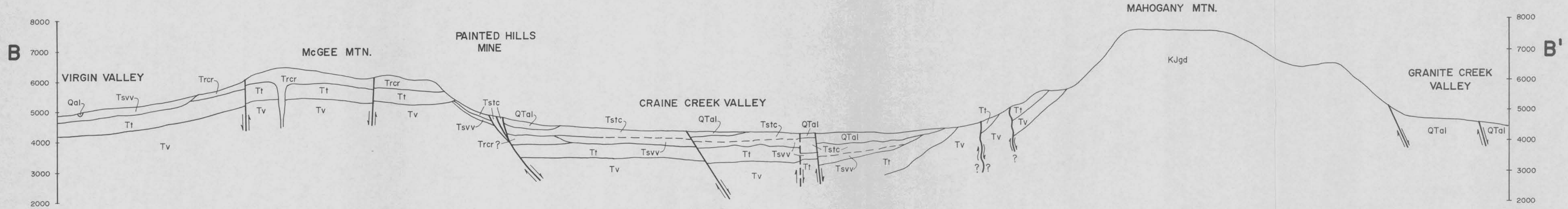
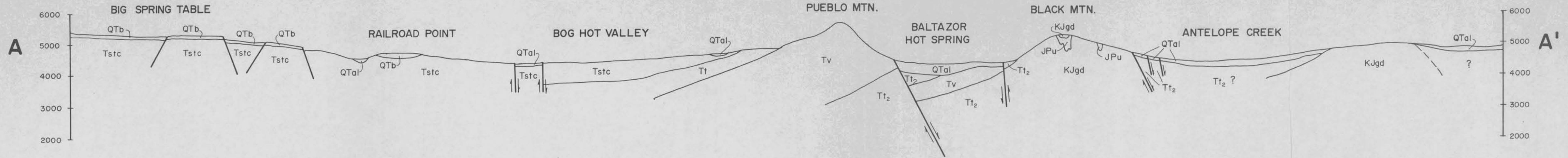
Source: GEOTHERMEX SURVEY, DECEMBER, 1977

EARTH POWER PRODUCTION COMPANY
TULSA, OKLAHOMA

GEOCHEMICAL DATA

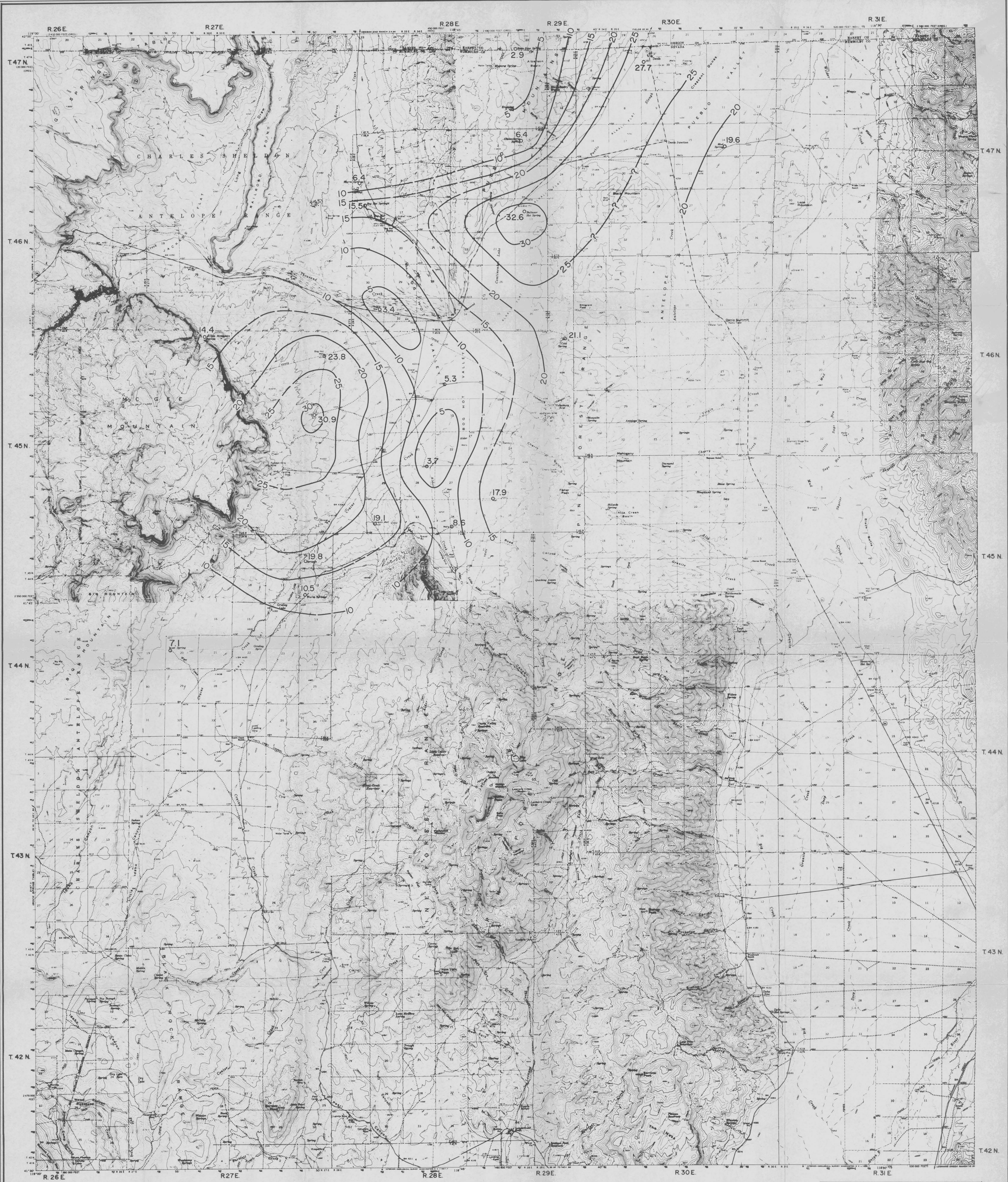
BALAZOR-McGEE
GEOTHERMAL PROSPECTS
HUMBOLDT COUNTY, NEVADA

DATE: SEPTEMBER 29, 1978 DRAWN BY: T.L. Griffin
 SCALE: 1:62,500 SURVEY:



REVISIONS			

EARTH POWER PRODUCTION COMPANY	
TULSA, OKLAHOMA	
PLATE 2. GEOLOGIC CROSS-SECTION	
BALTAZOR-McGEE GEOTHERMAL PROSPECTS	
HUMBOLDT COUNTY, NEVADA	
DATE: OCTOBER 2, 1978	DRAWN BY: T.L. GRIFFIN
SCALE: 1:62,500	SURVEY:

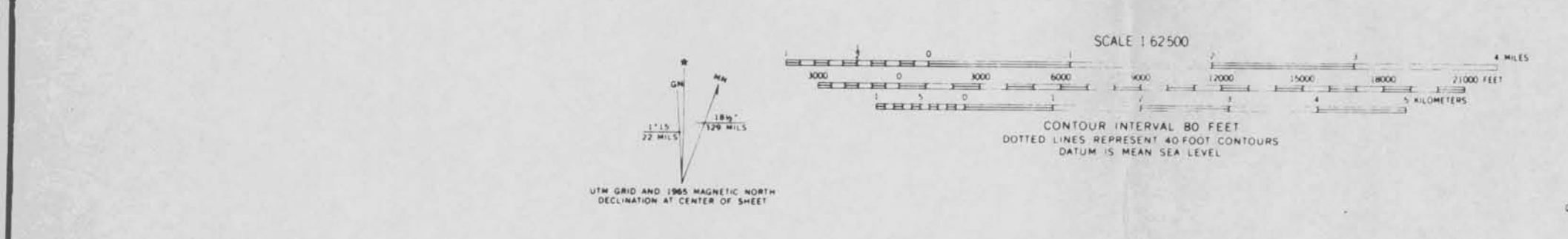
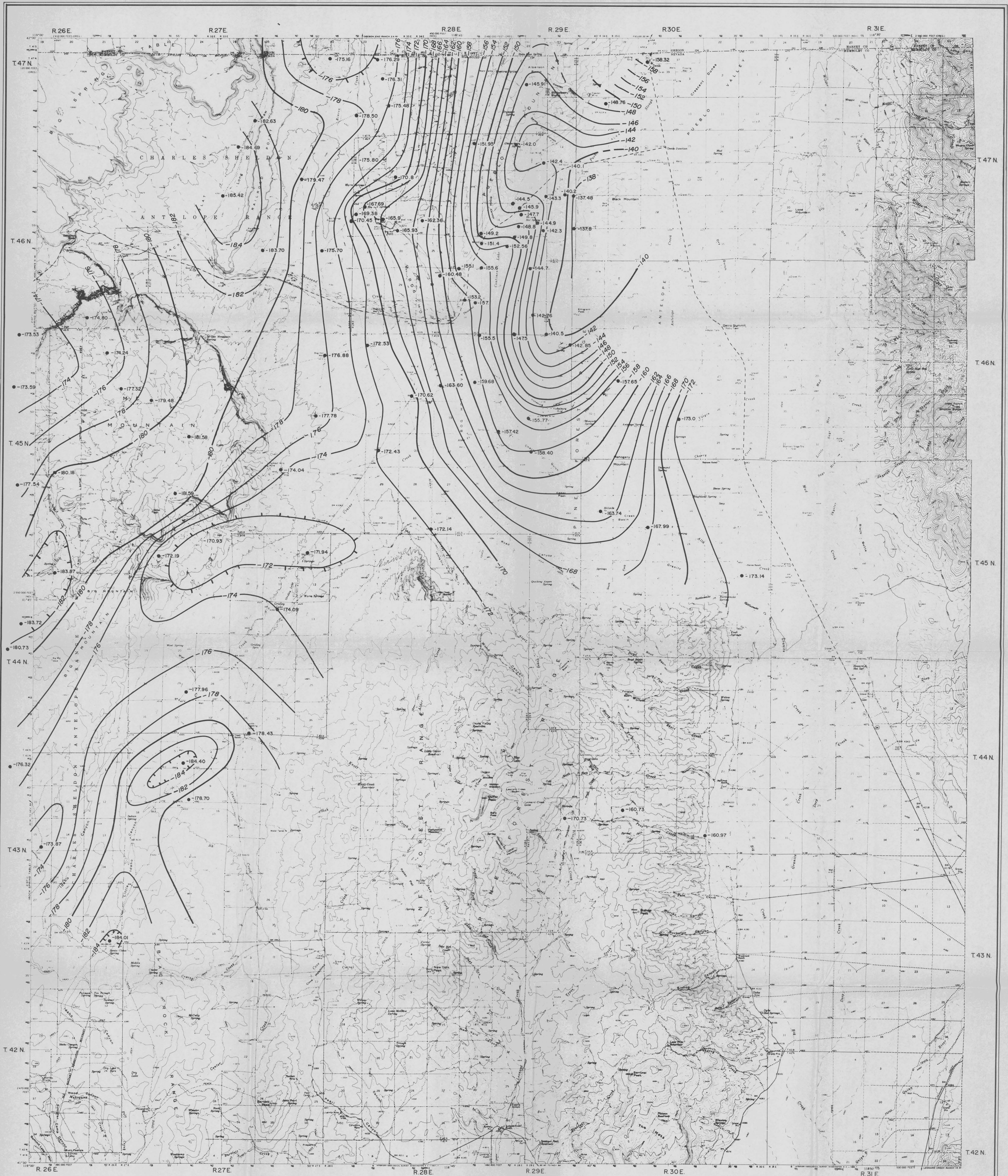


NOTE:

1. SULFATE SHOWN AS PERCENT OF TOTAL DISSOLVED SOLIDS.
2. CONTOUR INTERVAL : 5% T.D.S.
3. DATA SOURCE - GEOCHEMICAL SURVEY BY GEOTHERMEX, INC. / FALL 1977

EARTH POWER PRODUCTION COMPANY TULSA, OKLAHOMA	
SULFATE MAP	
BALTAZOR-McGEE GEOTHERMAL PROSPECTS HUMBOLDT COUNTY, NEVADA	
DATE: SEPTEMBER 1977	DRAWN BY: T.L. Griffin
SCALE: 1:62,500	SURVEY:

REVISIONS	
1	
2	
3	



C.I. = 2 MILLIGALS

SOURCES:

Principal facts for gravity observations in the Charles Sheldon Antelope Range, Nevada-Oregon. By Donald Plouff, Stephen L. Robbins & Kenneth D. Holden - USGS Open File 76-601 also, Principal facts for gravity survey of Baltazor K.G.R.A., Nevada. By Donald L. Peterson and Donald B. Hoover - USGS Open File 77-67C

EARTH POWER PRODUCTION COMPANY
TULSA, OKLAHOMA

GRAVITY MAP

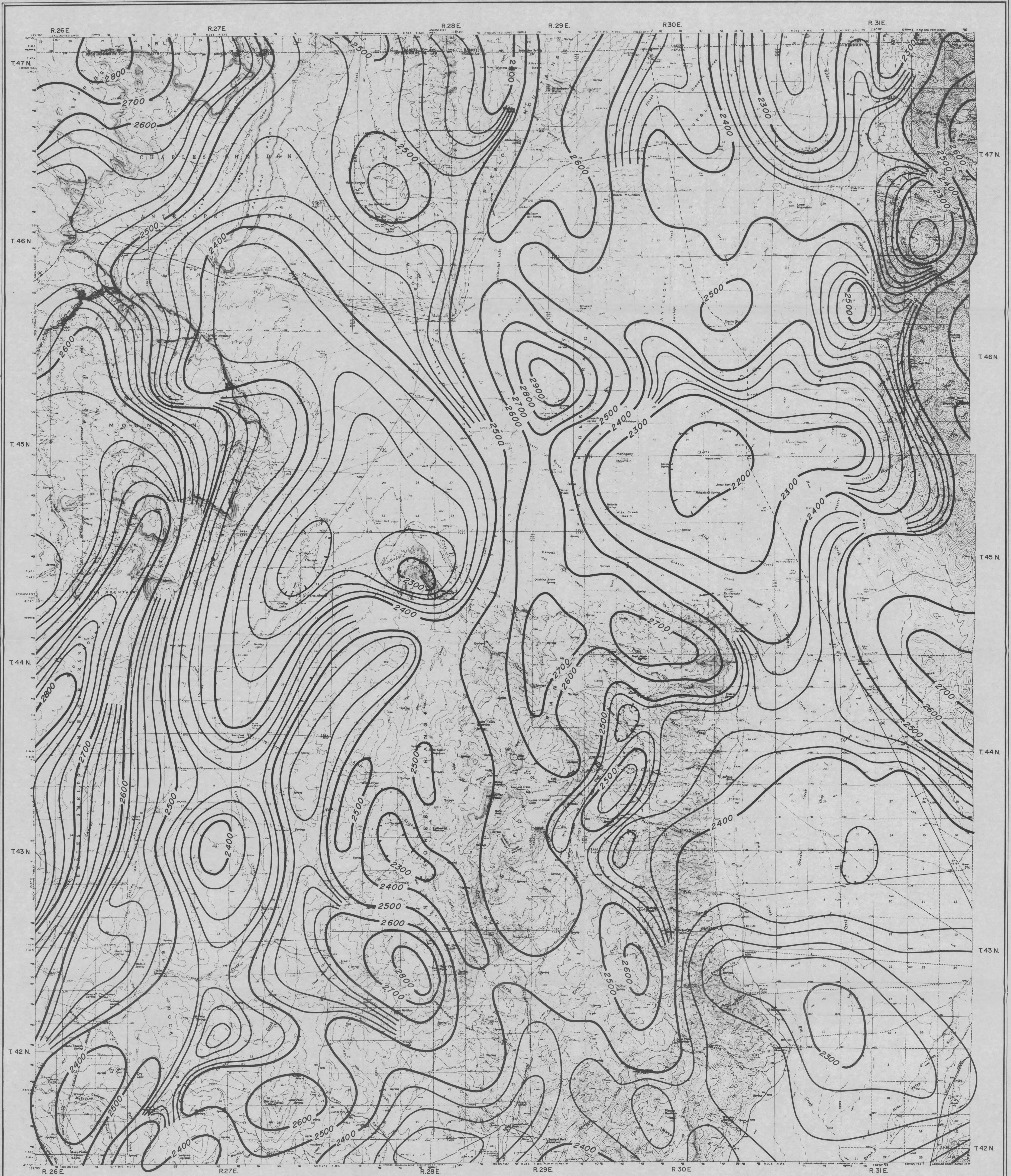
BALTAZOR-McGEE
GEOHERMAL PROSPECTS
HUMBOLDT COUNTY, NEVADA

DATE: OCTOBER 3, 1978
SCALE: 1:62,500

DRAWN BY:
SURVEY:

REVISIONS

1	7-19-78	



C.I. = 100 gammas w/20 gamma intermediates

A regional magnetic gradient averaging 9 gammas per mile to the NE has been removed from this map. Gradient derived from E. B. Fabiano and N.W. Peddie, 1969. Grid values of total magnetic intensity IGRF-1965; U.S. Coast and Geodetic Survey Tech. Dept. 56, updated to 1972.

Aeromagnetic Survey flown and compiled by Scintrex Mineral Surveys, Inc. Flown at 9,000 feet barometric elevation, 1972. Datum is mean sea level.

Nevada Bureau of Mines and Geology Map 48
Reno, Nevada 89507

EARTH POWER PRODUCTION COMPANY TULSA, OKLAHOMA	
AEROMAGNETIC MAP VYA SHEET - 1974	
BALTAZOR-McGEE GEOTHERMAL PROSPECTS HUMBOLDT COUNTY, NEVADA	
DATE: October 3, 1978	DRAWN BY: J.R.T.
SCALE: 1"=62,500	SURVEY:

