

NV/DP/PPC-2

Ground magnetics map & gravity map, Carson Sink area

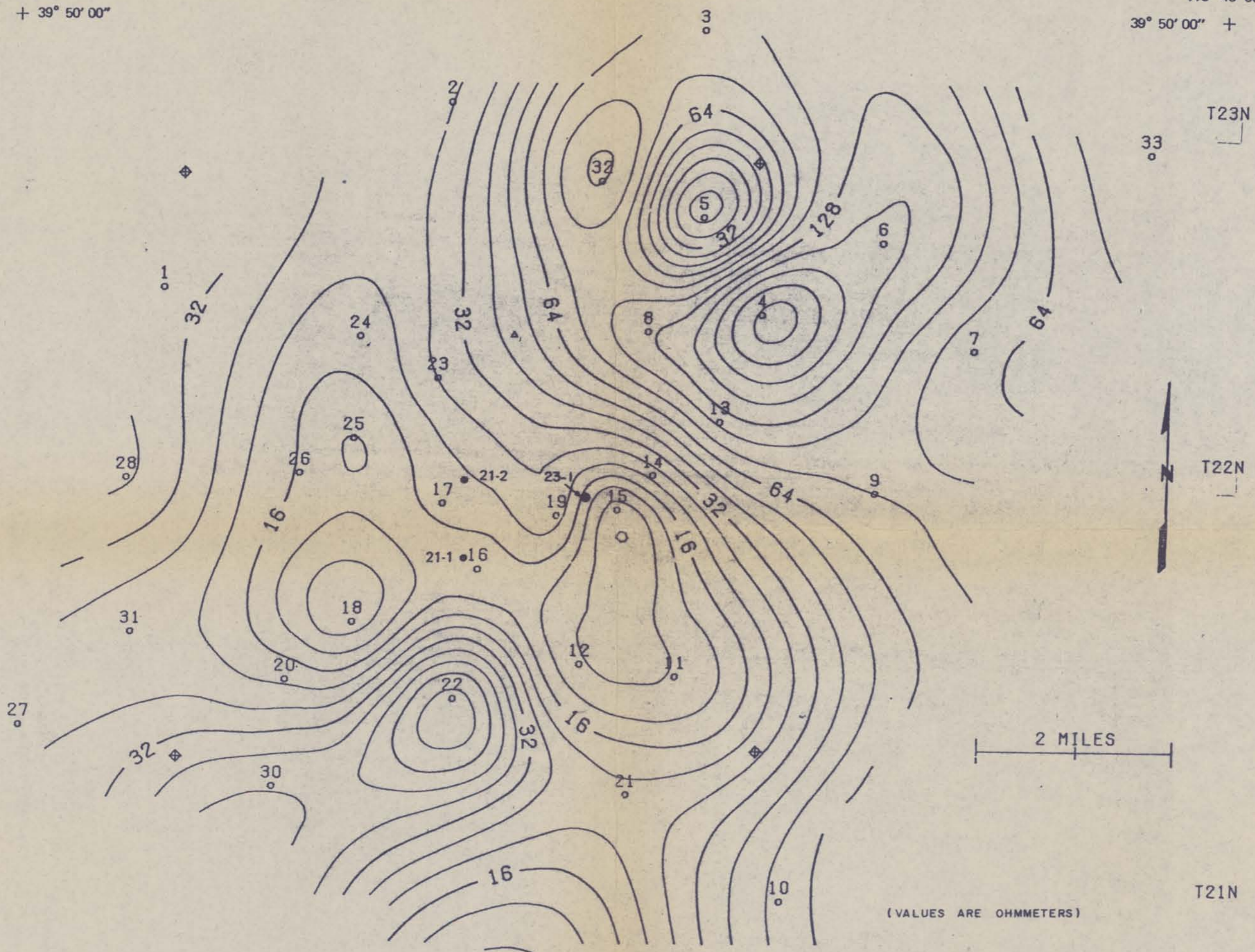
2.15

12

*Desert Peak
Churchill Co.*

119° 02' 00"
+ 39° 50' 00"

118° 48' 00"
39° 50' 00" +



(VALUES ARE OHMMETERS)

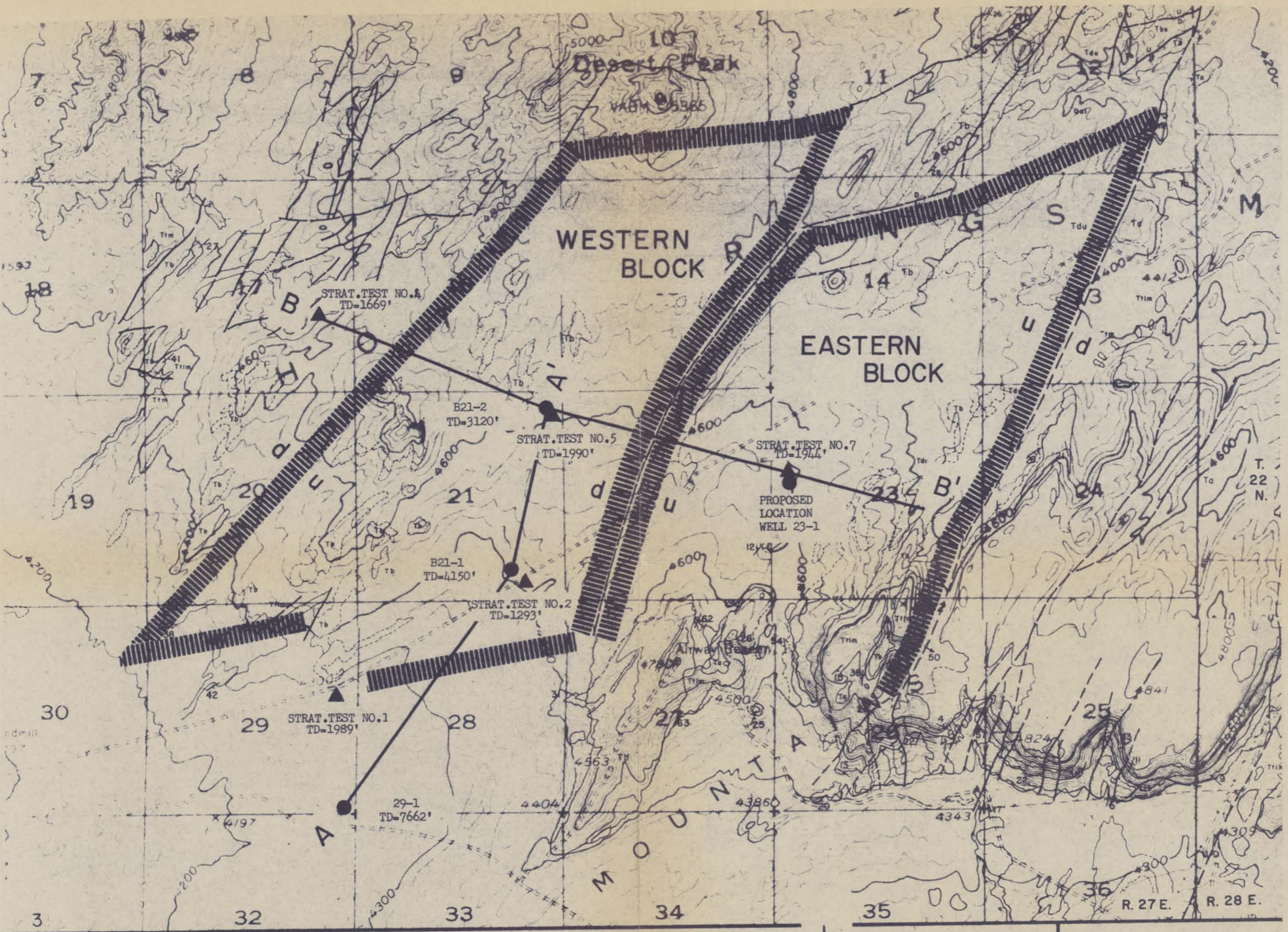
+ 39° 41' 00"
119° 02' 00"

R27E

DESERT PEAK
MAGNETOTELLURIC SLICE MAP
AT A DEPTH OF 3500'

R28E

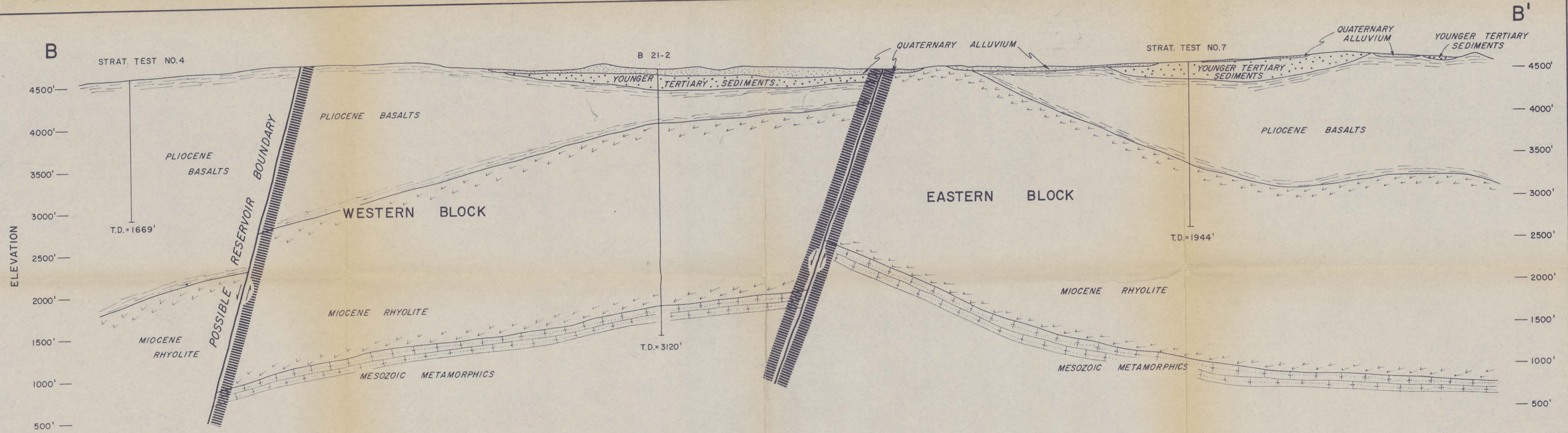
39° 41' 00" +
118° 48' 00"



- QUATERNARY ALLUVIUM
- ANDESITIC ASH FLOW
- YOUNGER TERTIARY SEDIMENTS - TRUCKEE FM.
- PLIOCENE BASALTS - CHLOROPAGUS FM.
- MIOCENE RHYOLITES

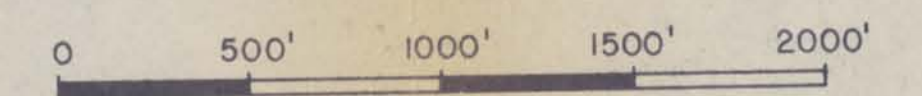
PHILLIPS PETROLEUM COMPANY
 GEOLOGIC MAP OF DESERT PEAK
 CHURCHILL COUNTY, NEVADA

SCALE: 1" = 2000'



DESERT PEAK - GEOLOGIC CROSS SECTION B-B'

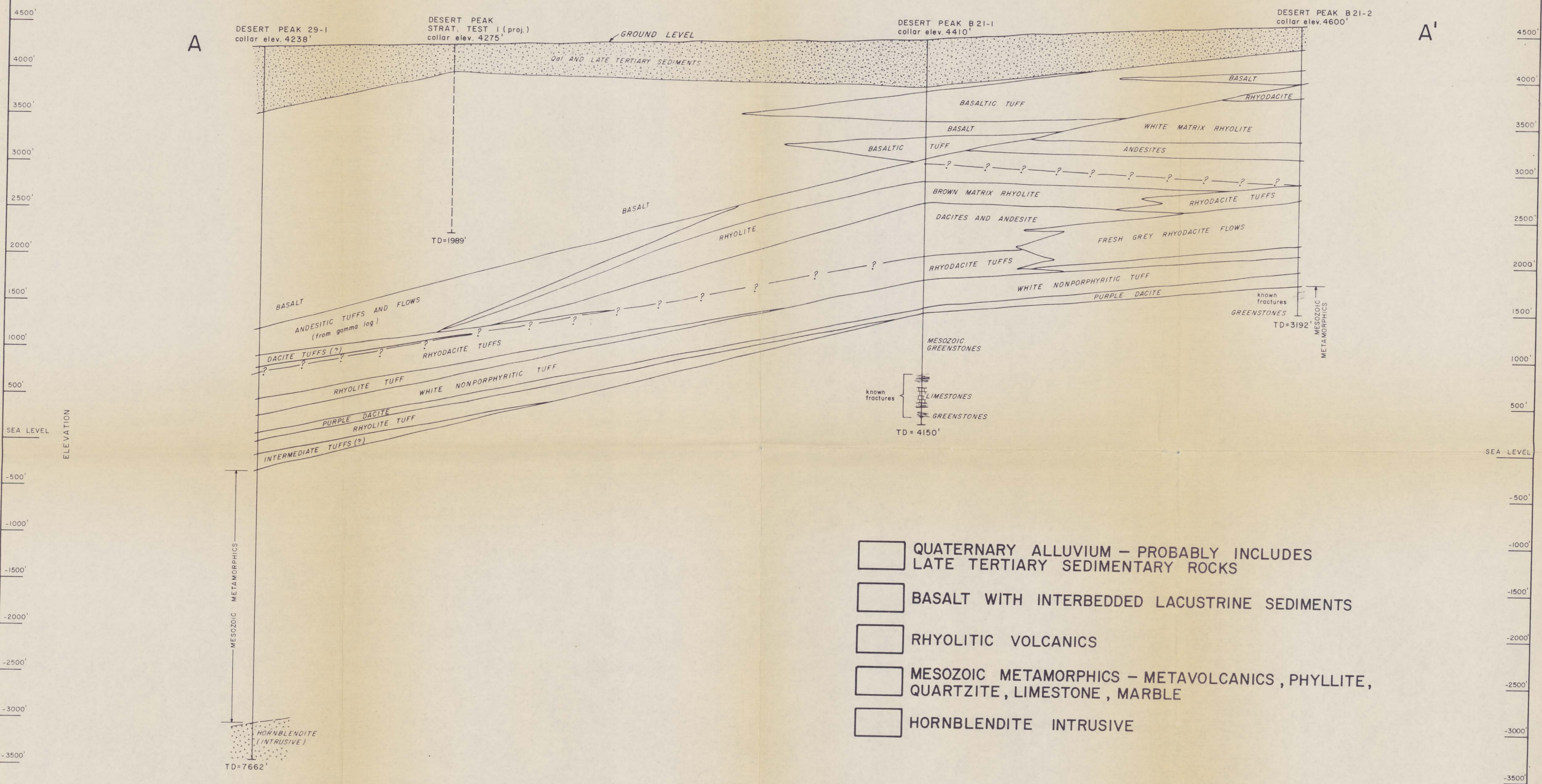
CHURCHILL CO., NEVADA



SCALE: 1" = 500' HORIZONTAL AND VERTICAL (no vertical exaggeration)

SW

NE



- QUATERNARY ALLUVIUM - PROBABLY INCLUDES LATE TERTIARY SEDIMENTARY ROCKS
- BASALT WITH INTERBEDDED LACUSTRINE SEDIMENTS
- RHYOLITIC VOLCANICS
- MESOZOIC METAMORPHICS - METAVOLCANICS, PHYLLITE, QUARTZITE, LIMESTONE, MARBLE
- HORNBLENDITE INTRUSIVE

GEOLOGIC CROSS SECTION
OF THE
DESERT PEAK AREA

SCALE: 1"=500' HORIZONTALLY AND VERTICALLY