

NV/DP/PPC-1

Phillips Petroleum: geologic map, 2 cross sections, magneto-
telluric slice map

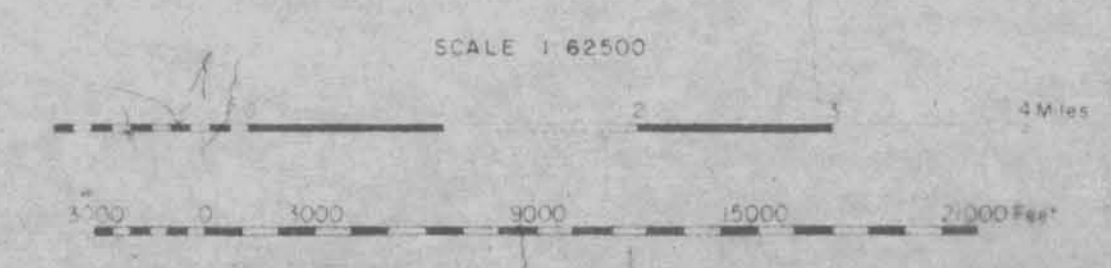
1.40



*Desert Peak
Churchill Co.*



VIRGINIA MOUNTAINS
 DEAD CANYON MOUNTAINS
 CHURCHILL LYON
 N.A.A.S. BOMBING TARGET AREA
 CARSON LAKE
 FALLON NAVAL AUX AIR STATION
 LAHONTAN MOUNTAINS
 STILLWATER NATIONAL WILDLIFE REFUGE
 FALLON INDIAN RESERVATION
 FERNLEY STATE WILDLIFE MANAGEMENT AREA



REVISION BY: J.L. BROWN	1-16-74
	2-22-73
	4-24-74
	6-14-74
DRAWN BY: DR. G. CROSSY	
CHECKED BY: J.A. GORRIDE	
APPROVED:	

PHILLIPS PETROLEUM COMPANY
 BARTLESVILLE, OKLAHOMA
 EXPLORATION AND PRODUCTION DEPARTMENT
 ENERGY MINERALS DIVISION

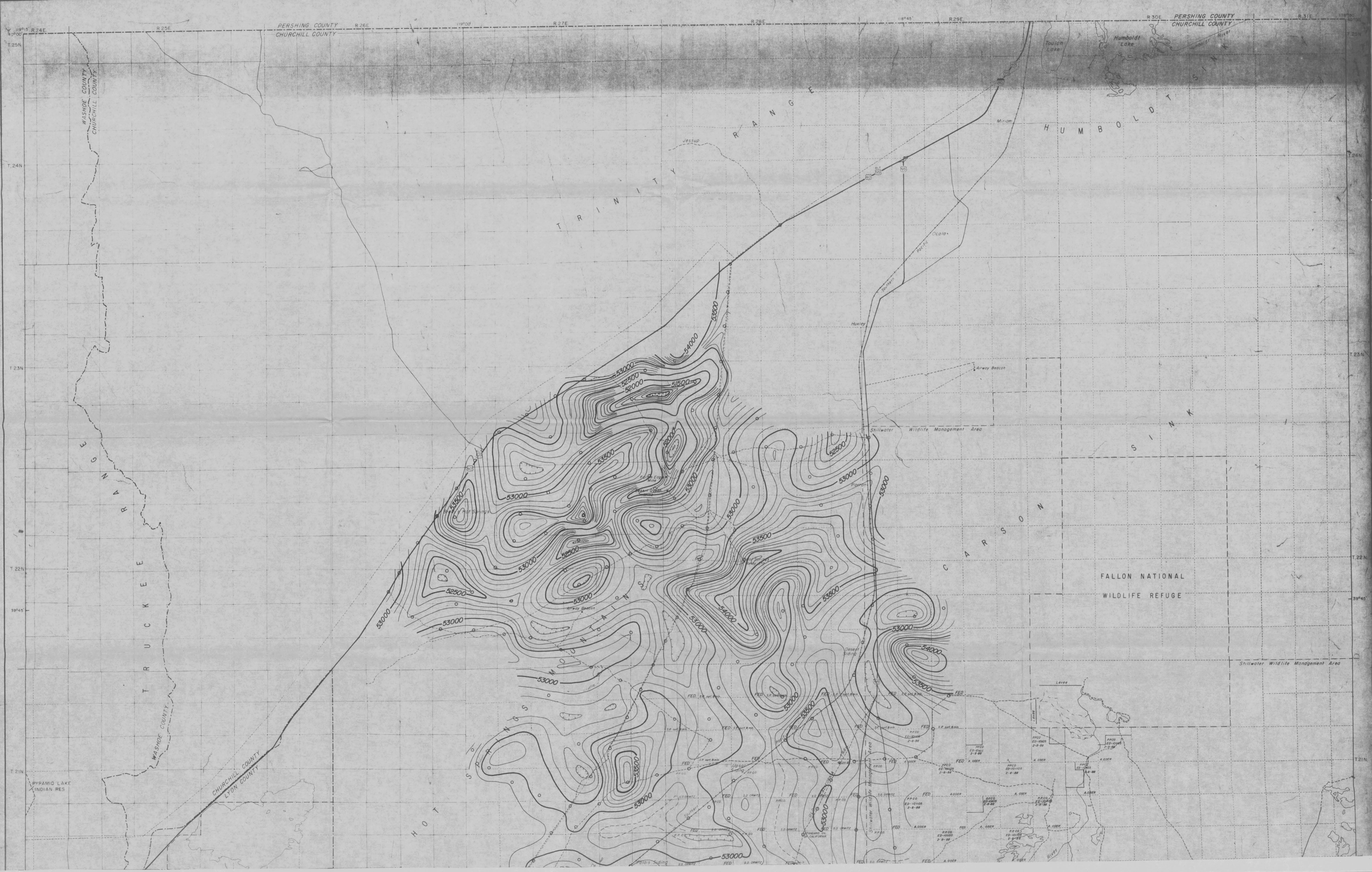
GRAVITY MAP
CARSON SINK AREA
 Churchill, Lyon and Washoe Co., Nevada
 Feb. 1973

CHANGE	
SCALE 1:62,500	
DATE	
BY	
NO.	



Geographical Index FIREBALL RIDGE DESERT PEAK CARSON SINK TWO TIPS SODA LAKE STILLWATER SILVER SPRINGS FALLON CARSON LAKE		C. I. 100 GAMMAS WITH SUPPLEMENTARY 50 GAMMA CONTOURS SCALE 1:62,500	REVISION BY: G. D. SMITH 2-6-73 2-22-73 2-28-73 DRAFTER: G. Gary Crosby CHECKED: J. A. Garbide DATE:	PHILLIPS PETROLEUM COMPANY BARTLESVILLE, OKLAHOMA EXPLORATION AND PRODUCTION DEPARTMENT ENERGY MINERALS DIVISION TOTAL INTENSITY GROUND MAGNETICS CARSON SINK AREA Churchill, Lyon and Washoe Co., Nevada Reno, Nevada Feb., 1973	CHARGE SCALE 1:62,500 SHEET NO. SHEET NO. SHEET NO.
--	--	--	--	---	---

N/2 Ground Magnetic Map CARSON SINK AREA Phillips Petroleum CO.



N/2 GRAVITY MAP CARSON SINK AREA, NEVADA Phillips Petroleum CO.

