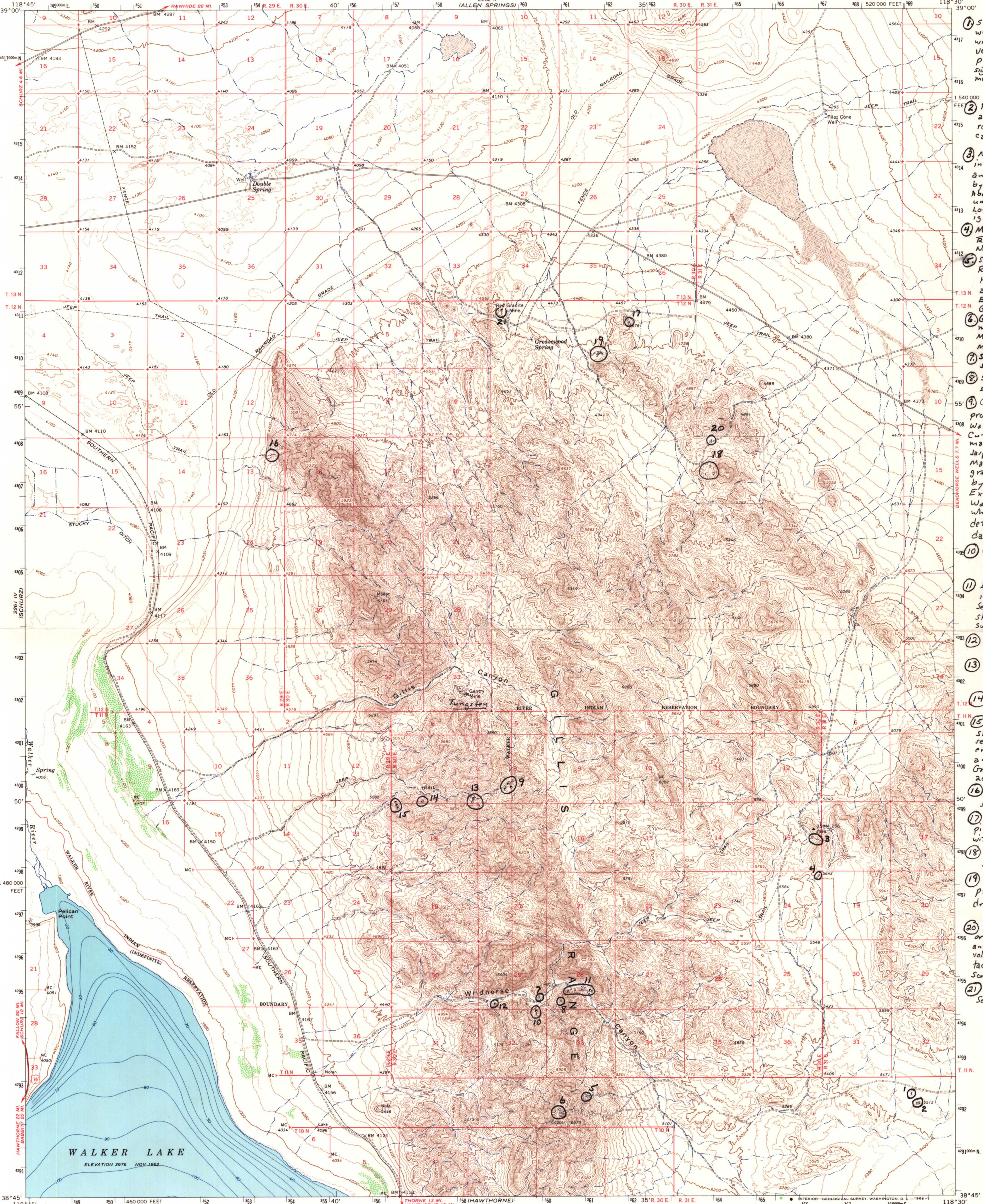


0760 0001

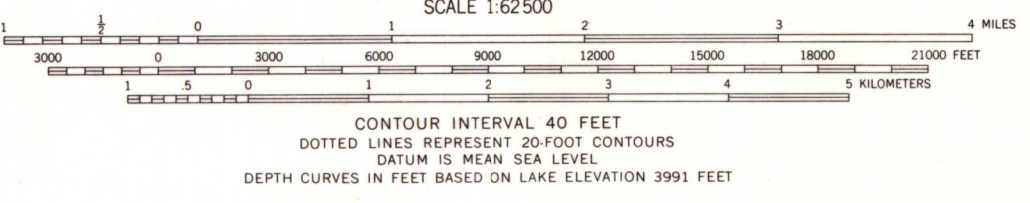
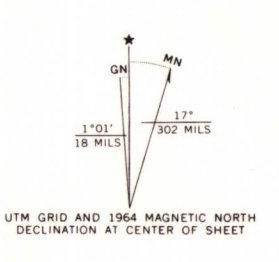
UNITED STATES
DEPARTMENT OF THE INTERIOR
GEOLOGICAL SURVEY

GILLIS CANYON QUADRANGLE
NEVADA-MINERAL CO.
15 MINUTE SERIES (TOPOGRAPHIC)



- ① Shaft in weathered granite with some qtz veins. No apparent production or significant metallization.
- ② Prospects in altered volcanic rocks. No significant production or
- ③ N 20° E shear in Fe-Je? meta-anderite overlain by Tertiary ignimbrite. About one day of underground work. Lower adit starts in ignimbrite.
- ④ Minor shear in Fe-Je? metamorphics. Nothing of importance.
- ⑤ Silver Bell mine. Ralph C. Phillips, Hawthorne. Calcite and galena in Excelsior fm. below Gillis thrust.
- ⑥ Gravity barite mine. See Mineral Co. Indust. Mineral Report.
- ⑦ See report sheet #7
- ⑧ See report sheet #8
- ⑨ Copper Hill? project of Walker-Martel. Cu-Pb in tectite + marble with N-S jasperoid ledge. Marble intruded by granite and overlain by Tert. volcanics. Extensive work by Walker-Martel who should have detailed maps I.P. data.
- ⑩ Curley barite deposit - see report sheet #10
- ⑪ E-W qtz vein in "Excelsior". See attached sketch of surface workings #11
- ⑫ See attached sketch map #12
- ⑬ See attached note sheet #13
- ⑭ See note sheet #14
- ⑮ shallow (see note sheet #15) shaft with secondary Cu minerals in ls, tectite and jasperoid. Granite contact 200-300' north.
- ⑯ See note sheet #16
- ⑰ Unmineralized pit in tuff layer within Tert. flow
- ⑱ See note sheet #18
- ⑲ The Hottentot project - Fe body drilled by Martel Mining.
- ⑳ Tectite mass in or against granite and overlain by Tert. volcanics. Extent of tectite is unknown. Some bulldozer work.
- ㉑ Red Granite mine. See note sheet #21

Mapped, edited, and published by the Geological Survey
Control by USGS and USC&GS
Topography by photogrammetric methods from aerial photographs taken 1962. Field checked 1964
Depth curves compiled from U. S. Navy hydrographic map (1957)
Polyconic projection. 1927 North American datum
10,000-foot grid based on Nevada coordinate system, west zone
1000-meter Universal Transverse Mercator grid ticks, zone 11, shown in blue
Where omitted, land lines have not been established



GILLIS CANYON, NEV.
N3845-W11830/15