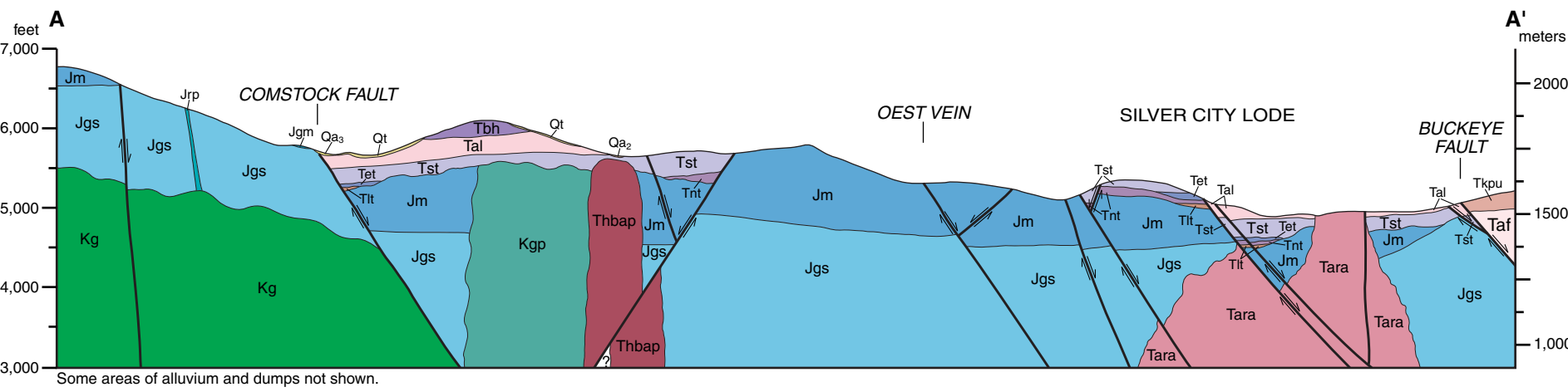


- Legend:**
- d Dumps
  - Qs Sand
  - Qt Talus
  - Qa<sub>1</sub> Young alluvium
  - Qa<sub>2</sub> Intermediate - age alluvium
  - Qa<sub>3</sub> Old alluvium
  - Ob American Flat Basalt
  - Tbbi Big boulder lahar
  - Tbd Black dike (no outcrops)
  - Tbh Andesite of Basalt Hill
  - Tka Knickerbocker Andesite
  - Tkai Knickerbocker Andesite intrusion
  - Tia Andesite porphyry dikes
- Kate Peak Formation**
- Tkpu Upper member flows and lahars
  - Tkpu Upper member intrusion or dome
  - Tkpi Lower member flows
  - Tkpi Lower member intrusion
- Hornblende andesite porphyry dikes**
- Thp Hornblende andesite porphyry dikes
  - Tri Rhyolite intrusion
  - Thbap Hornblende biotite andesite porphyry
- Davidson Diorite**
- Tdd Davidson Diorite
  - Tdep Andesite porphyry intrusion
  - Tdaf Andesite porphyry flows
- Pyroxene hornblende andesite porphyry intrusion**
- Thpap Pyroxene hornblende andesite porphyry intrusion
  - Thpap Hollow hornblende pyroxene andesite porphyry
  - Tara American Ravine Andesite (intrusion)
- Alta Formation**
- Taf Upper member flows
  - Tafs Upper member sandstone and conglomerate
  - Tafb Upper member autocbreccia
  - Tas Suro Member
  - Tal Lower member flows and breccias
  - Tals Lower member sandstone and conglomerate
  - Tall Lower member lahars
  - Taph Plagioclase-hornblende andesite flow rock
  - Tah Hornblende andesite
  - Tabc Bailey Canyon member andesitic flows and lahars
  - Tabcb Bailey Canyon member basaltic lahars
  - Tabcl Bailey Canyon member intrusion
- Phenocryst-poor andesite**
- Tppa Phenocryst-poor andesite
  - Tpppb Plagioclase-hornblende-pyroxene-biotite flow
- Biotite rhyolite**
- Tbr Biotite rhyolite
- Unnamed lithic ash-flow tuff**
- Tut Unnamed lithic ash-flow tuff
- Santiago Canyon Tuff**
- Tst Santiago Canyon Tuff
  - Tsg Santiago Canyon Tuff basal gravel
- Eureka Canyon Tuff**
- Tet Eureka Canyon Tuff
- Nine Hill Tuff**
- Tnt Nine Hill Tuff
  - Tng Nine Hill Tuff basal gravel
- Lenihan Canyon Tuff**
- Tlt Lenihan Canyon Tuff
  - Tlg Lenihan Canyon Tuff basal gravel
- Guild Mine Member, Mickey Pass Tuff**
- Tgm Guild Mine Member, Mickey Pass Tuff
- Gravels**
- Tg Gravels
- Hornblende diorite porphyry**
- TKp Hornblende diorite porphyry
- Granite apite**
- Ka Granite apite
- Undivided granitic rocks**
- Kg Undivided granitic rocks
- Granodiorite**
- Kgr Granodiorite
- Leuco monzodiorite**
- Kqm Leuco monzodiorite
- Foliated granite**
- Kfg Foliated granite
- Granodiorite porphyry**
- Kgp Granodiorite porphyry
- Mafic metaigneous rock**
- Jm Mafic metaigneous rock
- Foliated lithic rhyolite porphyry**
- Jrp Foliated lithic rhyolite porphyry
- Preachers Formation**
- Jp Preachers Formation
- Gardnerville Formation siltstone and sandstone**
- Jgs Gardnerville Formation siltstone and sandstone
- Gardnerville Formation marble and limestone**
- Jgm Gardnerville Formation marble and limestone

- Contact** Dashed where approximately located, dotted where concealed, queried where uncertain.
- Gravel contact** Dashed where approximately located.
- Fault** Showing dip, dashed where approximately located, dotted where concealed, queried where uncertain; ball on downthrown side.
- Clay alteration along fault** Showing dip; dashed where approximately located; ball on downthrown side.
- Vein coincident with normal fault** Showing dip, dashed where approximately located; ball on downthrown side.
- Vein**
- Alunite alteration along a structure too narrow to outline Showing dip, ball on downthrown side.
  - Silicification along a structure too narrow to outline.
  - Tourmaline - quartz vein
- Strike and dip of bedding**
- Inclined Approximate Horizontal
- Strike and dip of foliation in metamorphic rocks**
- Inclined
- Strike and dip of compaction foliation**
- Inclined, arrow shows bearing and plunge of lineation
  - Inclined, lineation subparallel to strike
  - Vertical Approximate
- Strike and dip of foliation in igneous rocks**
- Inclined
- Strike and dip of joints**
- Inclined Vertical
- Columnar joints** Showing bearing and plunge



# PRELIMINARY GEOLOGIC MAP OF THE SOUTH HALF OF THE VIRGINIA CITY QUADRANGLE, NEVADA

Donald M. Hudson,  
Stephen B. Castor,  
and Larry J. Garside  
2001

Scale 1:24,000  
0 0.5 1 kilometer  
0 0.5 1 mile  
CONTOUR INTERVAL 40 FEET  
Base map: U.S. Geological Survey Virginia City  
7.5' Quadrangle, Digital Raster Graphic, 1983

Field work done in 2000-2001.  
**DRAFT**  
Preliminary geologic map. Has not undergone office or field review. May be revised before publication.  
Cartography by Robert Chaney (12004-01-01-01)  
Geologic mapping was supported by the U.S. Geological Survey STATEMAP Program (Agreement No. 00-HQ-AG-0048).  
Nevada Bureau of Mines and Geology  
University of Nevada, Mail Stop 178  
Reno, Nevada 89557-0088  
(775)784-4661, ext. 2;  
www.nbgm.unr.edu; nbmg@unr.edu