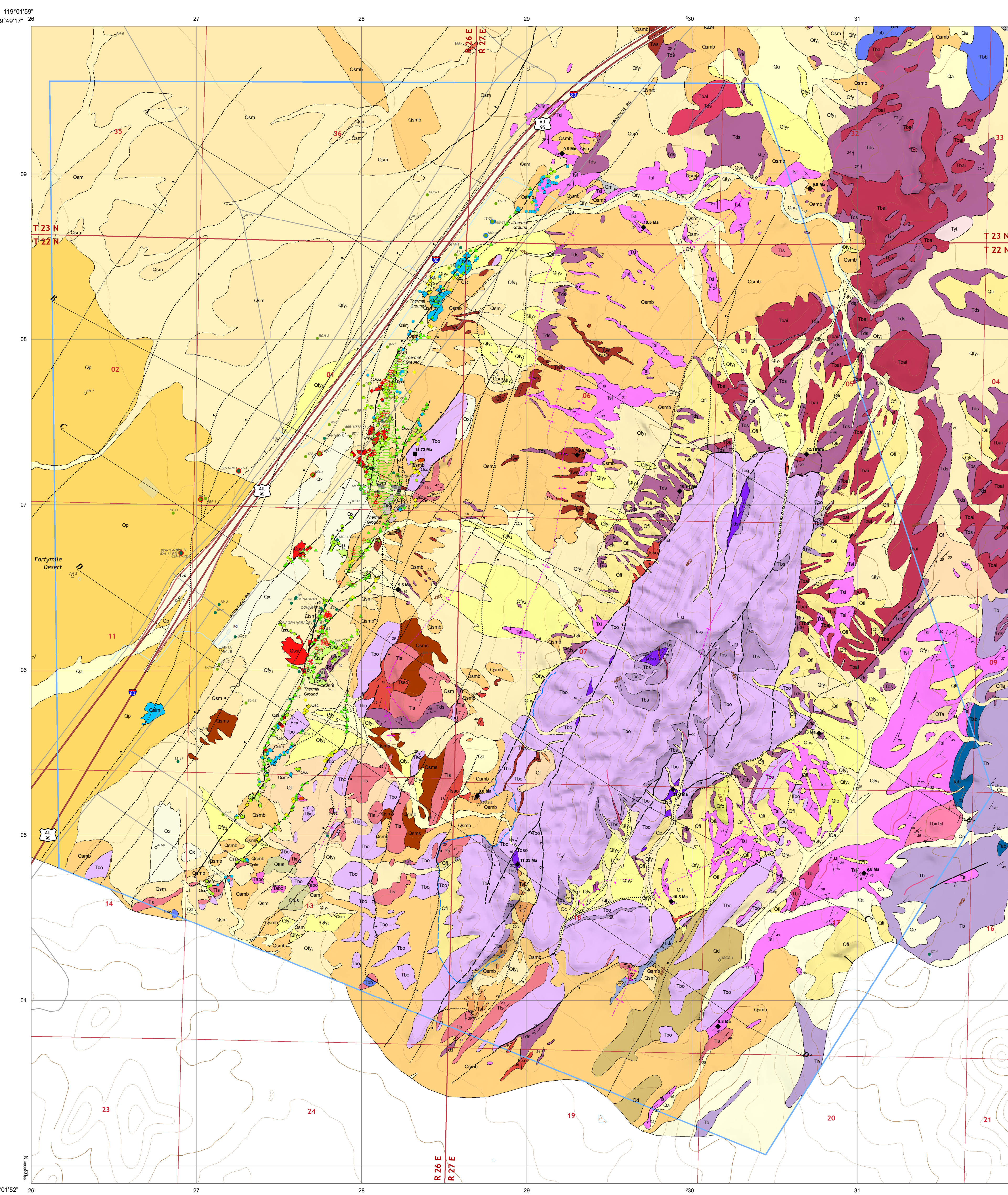
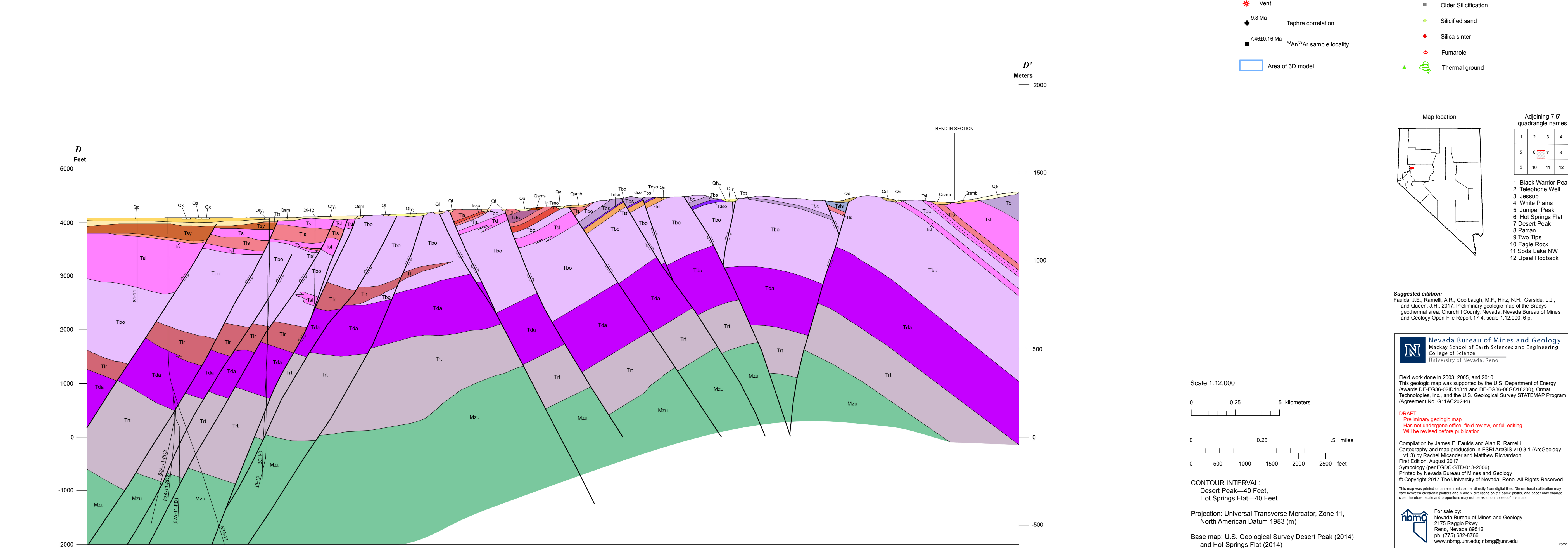
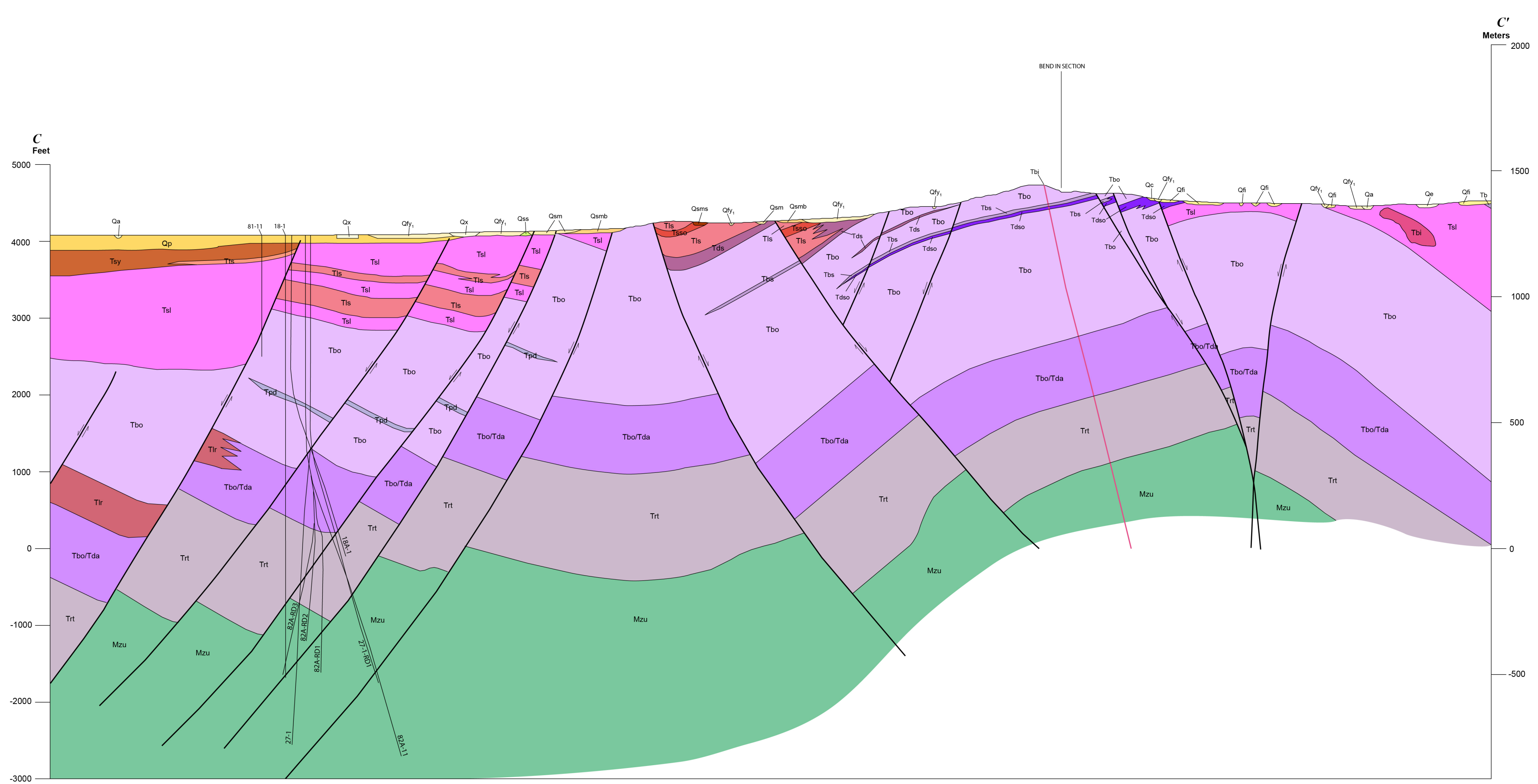
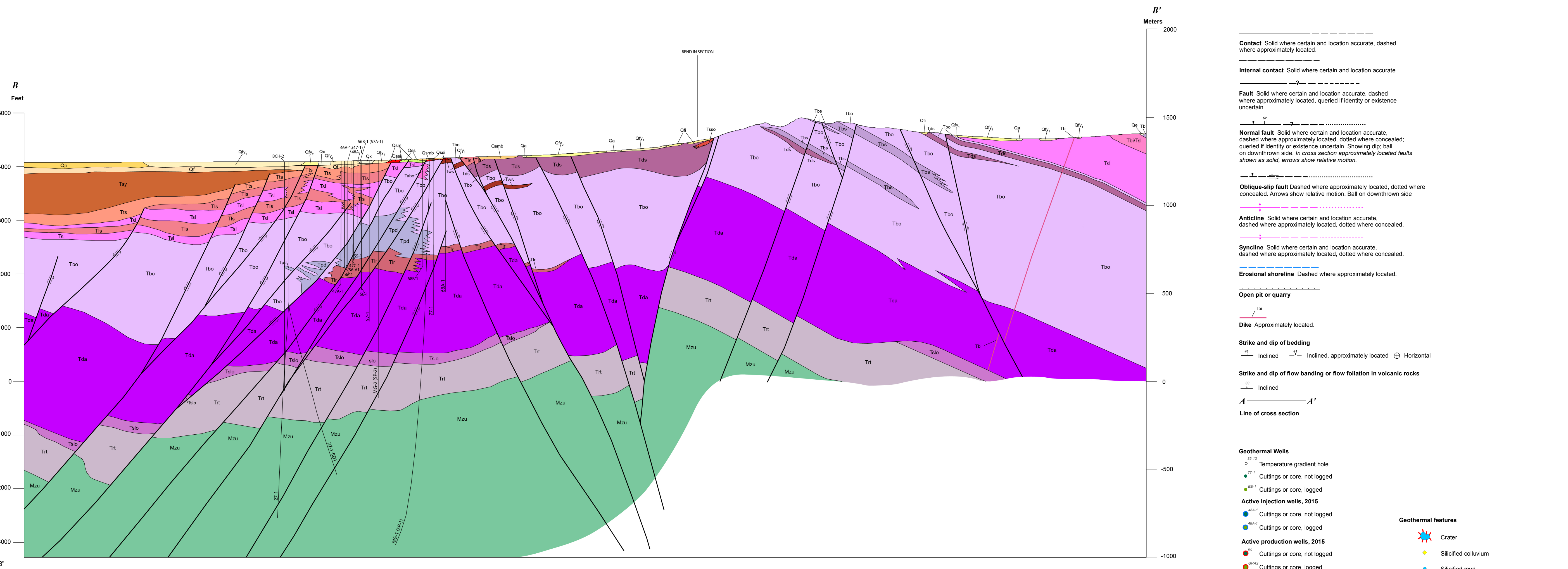
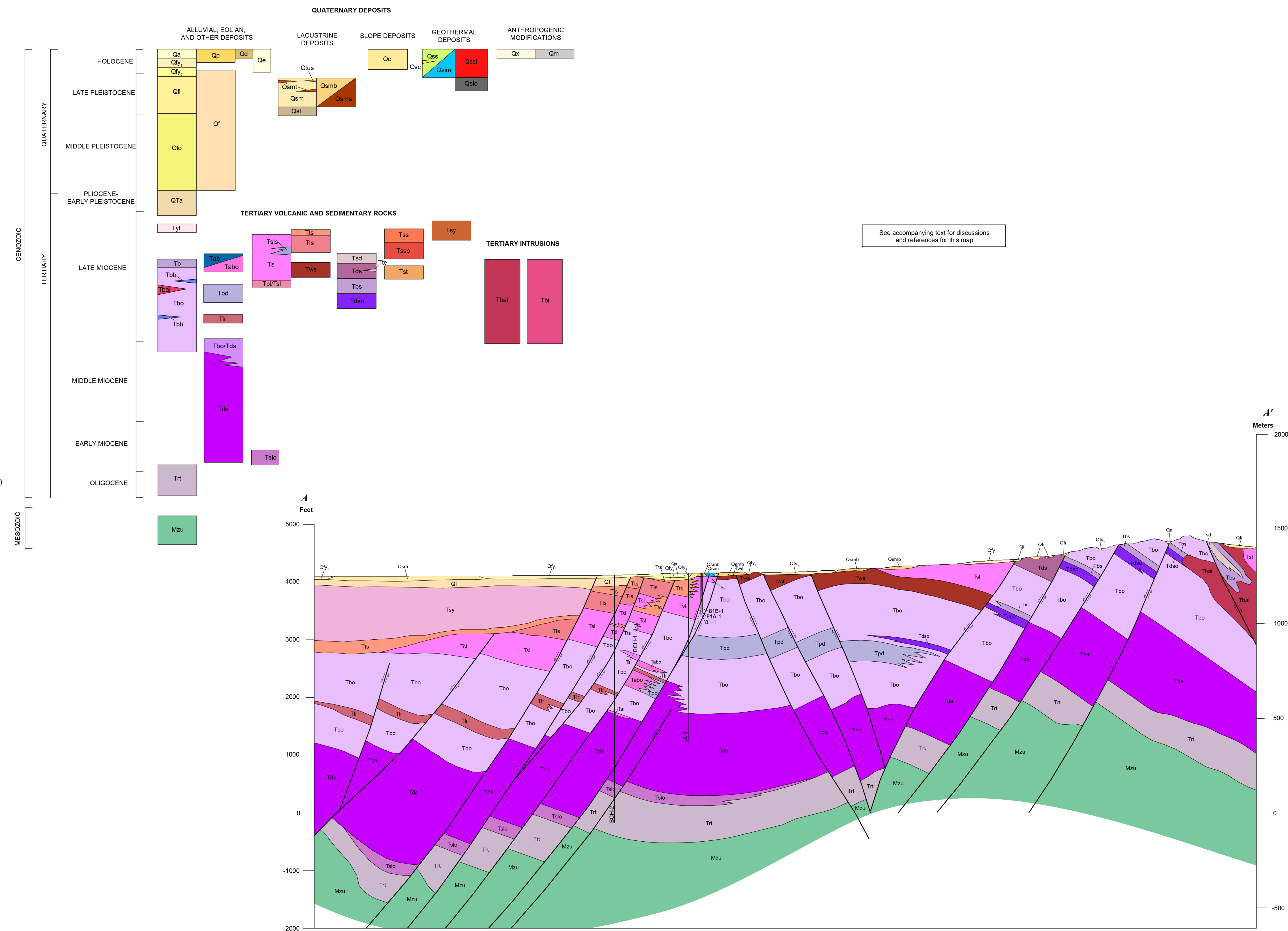


PRELIMINARY GEOLOGIC MAP OF THE BRADYS GEOTHERMAL AREA, CHURCHILL COUNTY, NEVADA

James E. Faulds<sup>1</sup>, Alan R. Ramelli<sup>1</sup>, Mark F. Coolbaugh<sup>1</sup>, Nicholas H. Hinz<sup>1</sup>, Larry J. Garside<sup>1</sup>, and John H. Queen<sup>2</sup>  
<sup>1</sup>Nevada Bureau of Mines and Geology, University of Nevada, Reno  
<sup>2</sup>Hi-Q Geophysical Inc., Ponca City, Oklahoma  
2017



- ANTHROPOGENIC MODIFICATIONS**
- ALLUVIAL, EOLIAN, AND OTHER DEPOSITS**
- GEOTHERMAL DEPOSITS**
- LACUSTRINE DEPOSITS**
- TECTONIC VOLCANIC AND SEDIMENTARY ROCKS**
- TECTONIC INTRUSIONS**
- MESOZOIC BASEMENT**



- Contact** Solid where certain and location accurate, dashed where approximately located.
- Internal contact** Solid where certain and location accurate, dashed where approximately located.
- Fault** Solid where certain and location accurate, dashed where approximately located, queried if identity or evidence uncertain.
- Normal fault** Solid where certain and location accurate, dashed where approximately located, queried if identity or evidence uncertain. Showing dip, fault on downthrown side. In cross section approximately located faults shown as solid, across strike relative motion.
- Oblique-slip fault** Dashed where approximately located, solid where concave. Arrows show relative motion. Fault on downthrown side.
- Anticline** Solid where certain and location accurate, dashed where approximately located.
- Syncline** Solid where certain and location accurate, dashed where approximately located.
- Erosional shoreline** Dashed where approximately located.
- Open pit or quarry**
- Dike** Approximately located.
- Strike and dip of bedding**
- Strike and dip of flow banding or flow foliation in volcanic rocks**
- Geothermal Wells**
- Geothermal features**

Scale 1:12,000  
0 0.25 0.5 kilometers  
0 500 1000 2000 2500 feet  
CONTOUR INTERVAL:  
Closed Peak—40 Feet  
Hot Springs Flat—40 Feet  
Production: Universal Transverse Mercator, Zone 11,  
North American Datum 1983 (NAD 83)  
Base map: U.S. Geological Survey Desert Peak (2014)  
and Hot Springs Flat (2014)