

PRELIMINARY GEOLOGIC MAP OF HEATH CANYON, CENTRAL GRANT RANGE, NYE COUNTY, NEVADA

Sean P. Long
Nevada Bureau of Mines and Geology
2014

PERIOD	UNIT	DESCRIPTION
QUATERNARY	Qa1	Colluvium, alluvium
	Qa2	Pluvial lake deposits
	Qa3	Younger alluvial fans
	Qa4	Older alluvial fans
TERTIARY	Tu	Tertiary valley fill sediment, undivided (in cross section only)
	Twb	Windous Butte Formation
	Tsc	Upper andesite flow
	Tal	Lower andesite flow
PALEOCENE-Eocene	Tsp	Sheep Pass Formation
	Fe	Ely Limestone
	Mc	Chainman Shale
	Mj	Joana Limestone
MISSISSIPPIAN	Dg	Gullmette Formation
	Ds	Simonsen Dolomite
	Dcc	Oxyoke Canyon Sandstone
	Dse	Seyi Dolomite
SILURIAN	Sl	Lakotown Dolomite
	Des	Ely Springs Dolomite (in cross section only)
	Qe	Eureka Quartzite (in cross section only)
	Opk	Lehman Formation (in cross section only)
ORDOVICIAN	Opp	Kanosh Shale (in cross section only)
	Ops	Shingle Limestone
	COsp	Parker Spring Formation
	COcg	Goodwin Formation
CAMBRIAN	Cm	Little Meadows Formation
	Cab	Blue Eagle member
	Cag	Grant Canyon member, upper unit
	Csg	Grant Canyon member, lower unit
PRECAMBRIAN	Cw	Willow Springs member
	Cpl	Pole Canyon Limestone
	CS	Pioche Shale (in cross section only)
	Zu	Prospect Mountain Quartzite (in cross section only)

Symbology (per FGDC-STD-013-2006)

Contact Solid where certain and location accurate, dashed where approximate, dotted where concealed.

Normal fault Solid where certain and location accurate, dashed where approximate, dotted where concealed. Ball on downthrown side. Arrows indicate motion direction in cross-section.

Detachment fault Solid where certain and location accurate, dashed where approximate, dotted where concealed. Teeth on downthrown block. Arrows indicate motion direction in cross-section.

Anticline Solid where certain, dashed where approximate, dotted where concealed.

Syncline Solid where certain, dashed where approximate, dotted where concealed.

Overtured syncline Solid where certain, dashed where approximate, dotted where concealed.

Strike and dip of bedding
 - Inclined
 - Horizontal
 - Vertical
 - Overturned

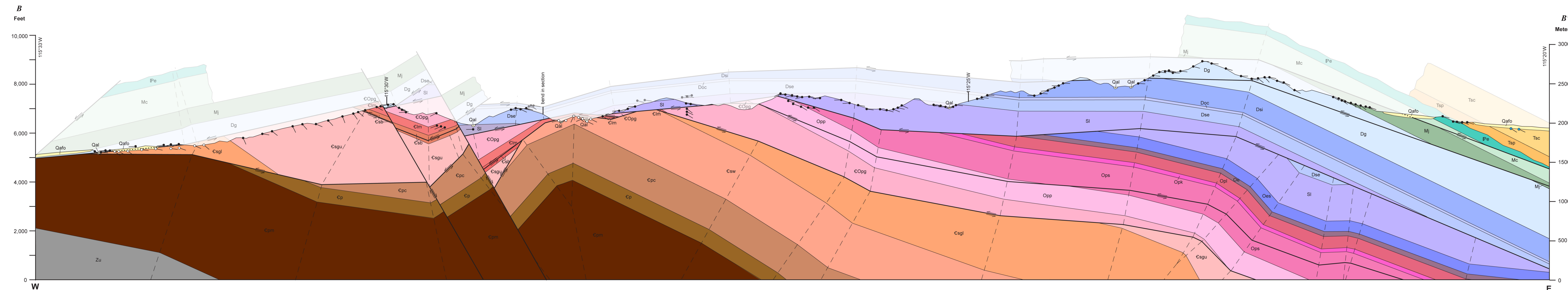
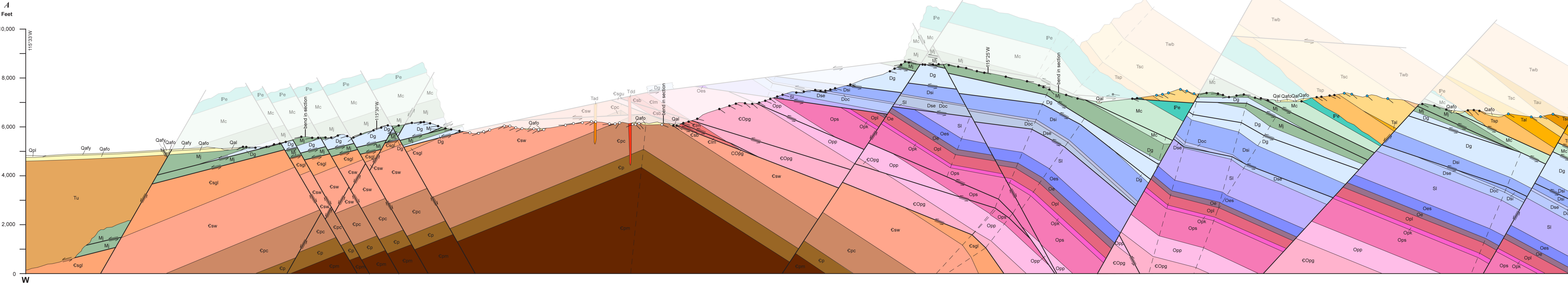
Strike and dip of compaction foliation in ash-flow tuff
 - Inclined

Strike and dip of flow foliation in volcanic rocks
 - Inclined

Strike and dip of tectonic foliation
 - Inclined

Apparent dip of bedding in cross section
 - Bedding in sedimentary rocks
 - Tectonic foliation
 - Layering in volcanic rocks

See accompanying text for full unit descriptions for this map.



Map location

Adjoining 7.5' quadrangle names

Suggested citation:
 Long, Sean P., Preliminary geologic map of Heath Canyon, central Grant Range, Nye County, Nevada: Nevada Bureau of Mines and Geology Open-File Report 14-6, scale 1:24,000, 4 p.

UTM GRID AND 1980 MAGNETIC NORTH DECLINATION AT CENTER OF SHEET

Scale 1:24,000

CONTOUR INTERVAL 20-40 FEET

Projection: Universal Transverse Mercator, Zone 11, North American Datum 1927 (m)

Base map: U.S. Geological Survey Bulwhacker Springs 7.5' quadrangle (1990)
Base map: U.S. Geological Survey Heath Canyon 7.5' quadrangle (1990)
Base map: U.S. Geological Survey Forest Home NE 7.5' quadrangle (1990)

Nevada Bureau of Mines and Geology
 Mackay School of Earth Sciences and Engineering
 College of Science
 University of Nevada, Reno

Field work done in 2013
 Supported by the U.S. Geological Survey STATEMAP Program (Agreement No. G13AC00235)

DRU/T
 Preliminary geologic map
 Has not undergone office or field review
 Will be revised before publication

Compilation by Sean P. Long
 Cartography and map production in ESRI ArcGIS v10.1 (ArcGeology v1.3)
 by Sean P. Long, Jennifer Kiser, and Kateri Ryan
 First Edition, September 2014
 Printed by Nevada Bureau of Mines and Geology

This map was printed on an archiving color digital film. Dimensional calibration may not be available for all colors. Colors may vary slightly from the original map and paper. Please refer to the color calibration chart and color bar for the most accurate color reproduction. Scale and proportions may not be exact on copies of this map.

For sale by:
 Nevada Bureau of Mines and Geology
 215 Raggio Drive
 Reno, Nevada 89512
 ph: (775) 682-9766
 www.nbgm.unr.edu, nbgm@unr.edu

Translucent areas represent eroded rock. No vertical exaggeration.