

Table with 4 columns: Site Name, Operator, Commodity, County Name. Lists 39 Metal Mines including Apex Mine, Balfour Beatty, and others.

Table with 4 columns: Site Name, Operator, Commodity, County Name. Lists 110 Industrial Mineral Mines including 3D Pit, Adams Claim, and others.

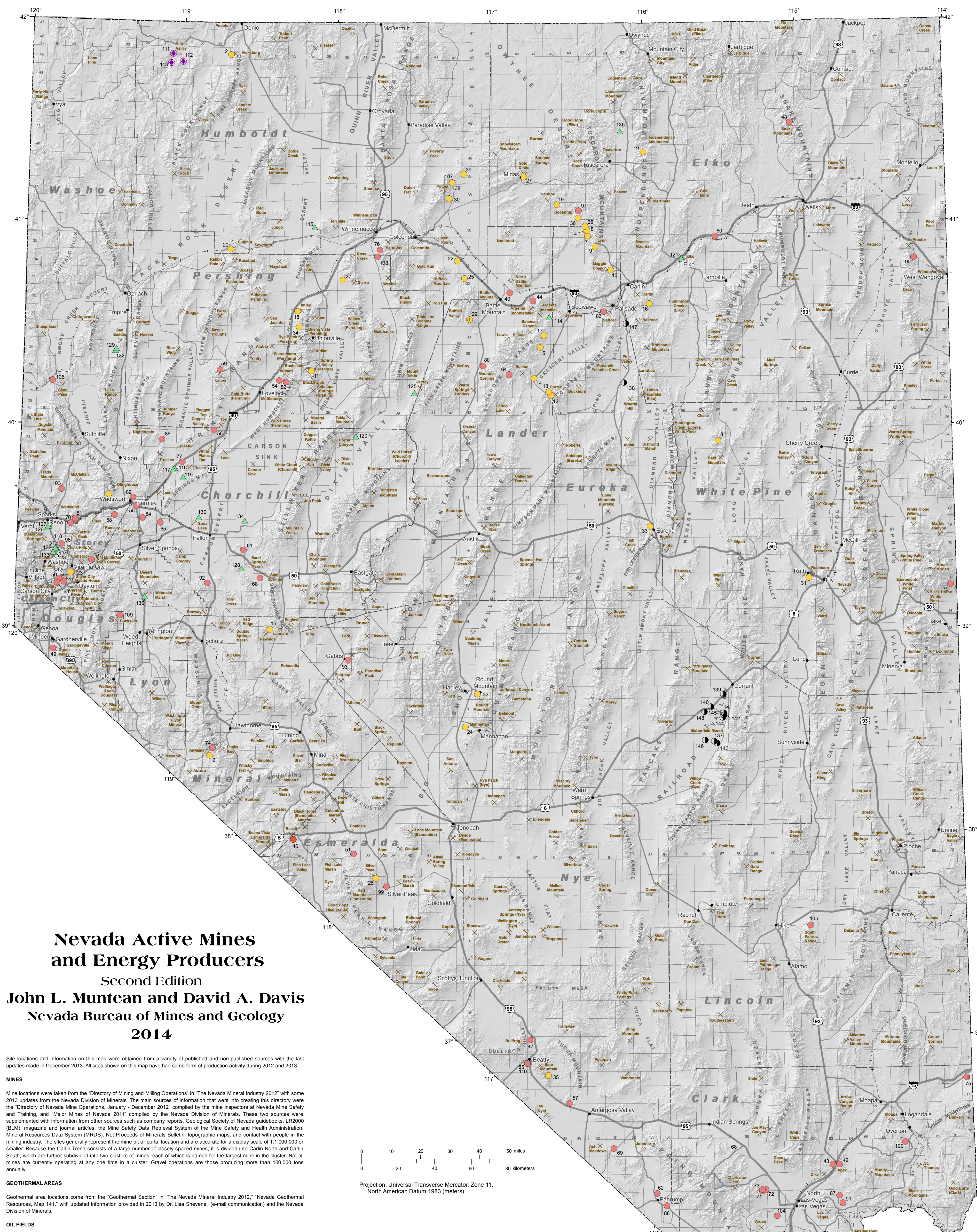
Table with 4 columns: Site Name, Operator, Commodity, County Name. Lists 3 Gemstone Mines including Bonanza Opal Mine, Rainbow Ridge Opal Mine, and Royal Peacock Opal Mine.

Table with 4 columns: Site Name, Operator, Commodity, County Name. Lists 136 Geothermal Areas including Beowawe, Blue Mountain, and others.

Table with 4 columns: Site Name, Operator, Commodity, County Name. Lists 17 Oil Fields including Bacon Flat, Blackfoot, and others.

Historic Mining Districts and Township and Range Grid

References and additional information sources including Davis, D.A., 2014. Directory of mining and milling operations. Nevada Bureau of Mines and Geology Special Publication MI-2012, p. 166-176.



Nevada Active Mines and Energy Producers Second Edition John L. Muntean and David A. Davis Nevada Bureau of Mines and Geology 2014

Site locations and information on this map were obtained from a variety of published and unpublished sources with the latest updates made in December 2013. All sites shown on this map had some form of production activity during 2012 and 2013.

MINES Mine locations were taken from the "Directory of Mining and Milling Operations" in "The Nevada Mineral Industry 2012" with some 2013 updates from the Nevada Division of Minerals. The main sources of information that went into creating this directory were the "Directory of Nevada Mine Operations, January - December 2012" compiled by the mine inspectors at Nevada Mine Safety and Training, and "Major Mines of Nevada 2011" compiled by the Nevada Division of Minerals.

GEOTHERMAL AREAS Geothermal area locations come from the "Geothermal Section" in "The Nevada Mineral Industry 2012." Nevada Geothermal Resources, Map 141, with updated information provided in 2013 by Dr. Lisa Shevenell (e-mail communication) and the Nevada Division of Minerals.

OIL FIELDS Oil field locations were taken from "Assessment of the Potential for Carbon Dioxide Sequestration with Enhanced Oil Recovery in Nevada, 2007" with updated information provided in 2013 by the Nevada Division of Minerals. Only currently producing oil fields are shown. Oil field symbol locations are based on initial discovery well. More detailed information on the oil fields, individual wells, company contact information, and production can be found in "Assessment of the Potential for Carbon Dioxide Sequestration with Enhanced Oil Recovery in Nevada, 2007." "The Nevada Mineral Industry 2012," "Major Mines of Nevada 2011," and "Petroleum data map of Nevada, 2007."

HISTORIC MINING DISTRICTS Historic Nevada mining district locations were taken from "Mining Districts of Nevada." The location of the symbol represents the approximate center of the mining district polygon as shown in the original report.

Nevada Bureau of Mines and Geology Mackay School of Earth Sciences and Engineering University of Nevada, Reno. Includes a logo and contact information.

Table titled 'MINERAL, GEOTHERMAL POWER, AND PETROLEUM PRODUCTION IN NEVADA'. Columns include Commodity, Quantity, Value (2011 and 2012), and % Change from 2011 to 2012. Rows list Gold, Silver, Copper, Molybdenum, Aggregate, Barite, Gypsum, Geothermal energy, and Other minerals.

Production as measured by mine shipments, sales, or marketable production (including consumption by producers); compiled by the Nevada Division of Minerals (NDOM) and the Nevada Bureau of Mines and Geology. Products mined or processed in Nevada but mined from deposits in California are excluded. Specifically, zeolite from the Ash Meadows plant in Nye County is not included in these totals.

Suggested citation: Muntean, J.L. and Davis, D.A., 2014. Nevada active mines and energy producers (second edition). Nevada Bureau of Mines and Geology Open File Report 14-1. Compilation scale 1:1,000,000.