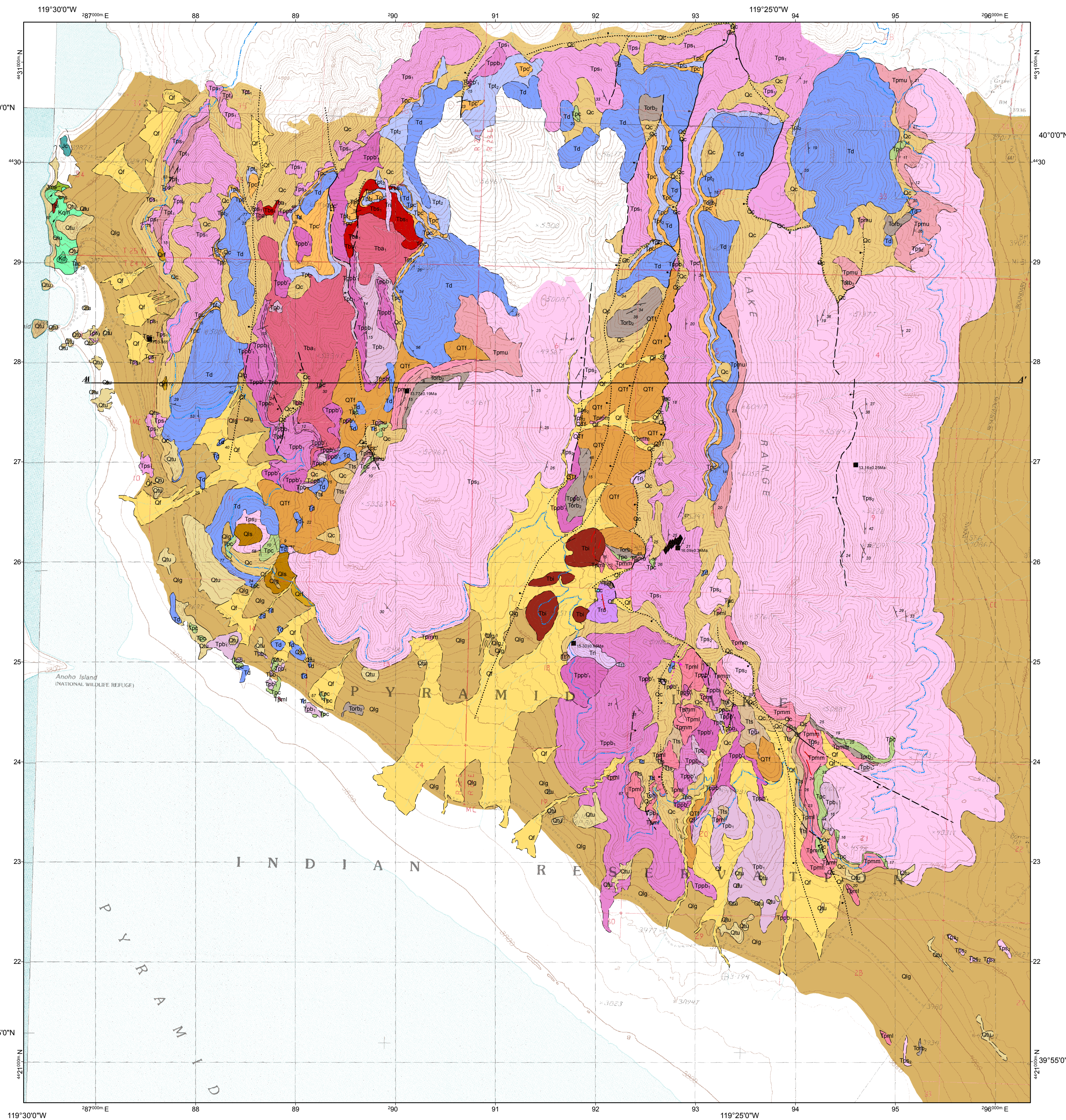


# PRELIMINARY GEOLOGIC MAP OF THE SOUTHERN LAKE RANGE, WASHOE COUNTY, NEVADA

Peter S. Drakos and James E. Faulds

Nevada Bureau of Mines and Geology,  
University of Nevada, Reno  
2013



- QUATERNARY DEPOSITS**
- Qf Undivided alluvial fan/colaterals and recent alluvium
  - Qc Colluvium
  - Qtu Tufa deposits
  - Qlg Lahontan gravels
  - Qls Landslide deposit
  - Qrf Recent rockfall deposits
  - QTI Late Tertiary-Pleistocene fan/colaterals
- PYRAMID SEQUENCE**
- Tps<sub>2</sub> Undivided upper Pyramid sequence
  - Torb<sub>2</sub> Olivine-rich basalt lava
  - Tpc Conglomerate and sandstone
  - Tpmu Upper tuff of Mullen Pass
  - Tpmm Middle tuff of Mullen Pass
  - Tpml Lower tuff of Mullen Pass
  - Tts Pumiceous tuffs and tuffaceous sandstones
  - Td Porphyritic dacite
  - Tp<sub>2</sub> Scoriaceous and pumiceous ash-flow deposit
  - Tpc<sub>2</sub> Volcaniclastic conglomerate and sandstone
  - Tps<sub>1</sub> Undivided lower Pyramid sequence
  - Tbs<sub>1</sub> Basalt scoria
  - Tba<sub>1</sub> Basalt agglomerate
  - Tpb<sub>1</sub> Aphantic basaltic-andesite lavas
  - Tppb<sub>1</sub> Finely porphyritic basaltic-andesite lavas
  - Tppb<sub>2</sub> Coarsely porphyritic basaltic-andesite lavas
  - Tpl<sub>1</sub> Unnamed ash-flow tuff of the lower Pyramid sequence
- INTRUSIONS**
- Tbd Basalt dike
  - Tbi Basalt intrusions
  - Trd Porphyritic rhyodacite intrusion
  - Trt Porphyritic rhyolite intrusions
- OLIGOCENE ASH-FLOW TUFFS**
- Tt? Unnamed Oligocene ash-flow tuff
  - Tnh Nine Hill Tuff
  - Tcc Tuff of Campbell Creek
  - Tac Tuff of Axehandle Canyon
- MESOZOIC ROCKS**
- Kqm Quartz monzonite granite
  - Kd Grandiorite
  - Jms Jurassic (?) metasedimentary rocks
  - Jc Jurassic (?) carbonates
  - Mzu Mesozoic granitic and metamorphic rocks, undivided (In cross section only)

**Symbology (per FGDC-STD-013-2006)**

**Contact** Solid where certain and location accurate, long-dashed where approximate, dotted where concealed. Ball on downthrown side. Arrows show relative motion in cross section only.

**Anticline** Dotted where concealed.

**Lahontan Highstand 1332m**

**Dike** Solid where certain.

**Strike and dip of bedding**

**Strike and dip of compact foliation in ash-flow tuff**

**Strike and dip of flow banding or flow foliation in volcanic rocks**

**Strike and dip of joints**

**Sample locations**

Ar Ar date  
♦ Paleomagnetic site (Data in Drakos, 2007)

A-A' Line of cross section

See accompanying text for full unit descriptions.

**Suggested citation:**  
Drakos, P., and Faulds, J. E., 2013. Preliminary geologic map of the southern Lake Range, Washoe County, Nevada. Nevada Bureau of Mines and Geology Open-File Report 13-11, scale 1:24,000, Sp.

Scale 1:24,000

0 0.5 1 kilometer

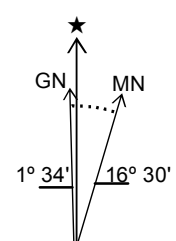
0 0.5 1 mile

0 1000 2000 3000 4000 5000 feet

CONTOUR INTERVAL 40 FEET

Projection: Universal Transverse Mercator, Zone 11, North American Datum 1927 (m)

Base map: U.S. Geological Survey Dove Creek 7.5' quadrangle (1964), and Nixon NW 7.5' quadrangle (1985)

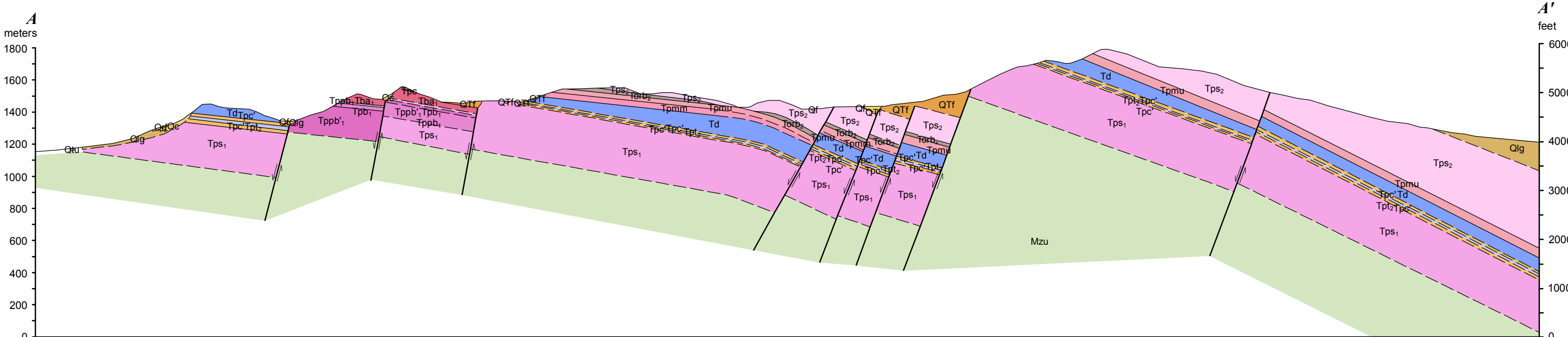
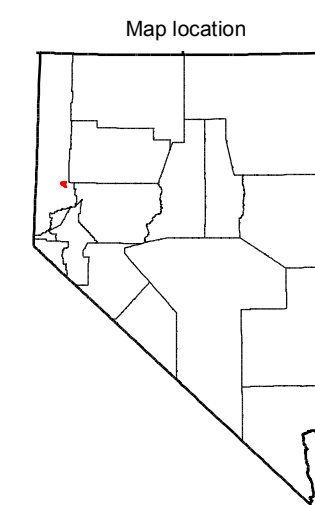


UTM GRID AND 1980 MAGNETIC NORTH DECLINATION AT CENTER OF SHEET

Adjoining 7.5' quadrangle names

1	2	3
4	5	6
7	8	9

- Pyramid SE
- Dove Creek
- Tohokum Peak SE
- Sutcliffe
- Nixon NW
- Russell Peak
- Moses Rock
- Pah Rah Mtn
- Nixon



**N** Nevada Bureau of Mines and Geology  
Mackay School of Earth Sciences and Engineering  
College of Science  
University of Nevada, Reno

Field work done in 2004-2006  
Supported by a grant from the National Science Foundation (Agreement No. EAR-0124889). Final editing and cartography was supported by an American Recovery and Reinvestment Act grant from the Department of Energy (Agreement No. EEO02842). We thank the Pyramid Lake Paiute Reservation for access to tribal lands and logistical support throughout the project.

**DRAFT**  
Preliminary geologic map  
Has not undergone office or field review  
Will be revised before publication

Compilation by Peter Drakos  
Cartography and map production in ESRI ArcGIS v10.1 (ArcGeology v1.3) by Irene M. Seelye  
First Edition, September 2013  
Printed by Nevada Bureau of Mines and Geology

This map was printed on an electronic raster directly from digital files. Dimensional calibration may vary between electronic plotters and X and Y directions on the same plotter, and paper may change with time; therefore, scale and proportions may not be exact on copies of this map.

For sale by:  
Nevada Bureau of Mines and Geology  
2175 Raggio Pkwy,  
Reno, Nevada 89512  
ph. (775) 882-8766  
www.nbm.unr.edu; nbmg@unr.edu