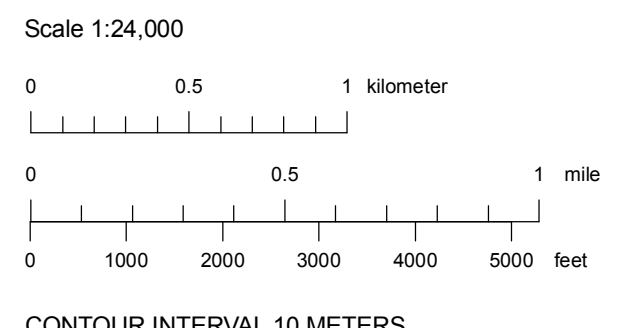


- QUATERNARY DEPOSITS**
- Qa Alluvium
  - Qt Talus
  - Qls Landslide deposits
  - Qp Playa deposits
  - Qe Eolian deposits
  - Qpg Pediment deposits
  - Qoa Older alluvial fan deposits
  - Qppo Older pediment deposits and/or surfaces
  - QTha Landslide and debris flow deposits
  - QTa Late Tertiary/early Pleistocene alluvial and alluvial fan deposits
- TERTIARY UNITS**
- Tg Gravel
  - Tsh Sedimentary rocks and landslide deposits of Hungry Valley
  - Tsh(1) Landslide deposits of Hungry Valley (3)
  - Tsh(2) Landslide deposits of Hungry Valley (2)
  - Tsh(1) Landslide deposits of Hungry Valley (1)
  - Tsp Sedimentary rocks of Pah Rah Range
  - Tl Lousetown Formation, flows
  - Td Lousetown Formation, dikes
  - Tba Basaltic trachyandesite flow
  - Tba(1) Basaltic trachyandesite dike
  - Tal Andesite lahars
  - Tha Hornblende andesite intrusive rocks
  - Tcs Tuff of Chimney Spring
  - Tnh Nine Hill Tuff
  - Td Tuff of Dogskin Mountain
  - Tmc Tuff of Mine Canyon
  - Twc Tuff of Cove Spring
  - Tts Tuffaceous sedimentary rocks and conglomerate
  - Tsu Tuff of Sutcliffe
  - Tsux Tuff and sedimentary rocks below tuff of Sutcliffe
  - Trc Tuff of Rattlesnake Canyon
  - Tax Tuff of Axe Handle Canyon
- CRETACEOUS(?) UNITS**
- Kap Aplite-pegmatite dikes
  - Kgr Granite
  - Kgl Leucocratic granodiorite
  - Kgd Granodiorite
  - Kgde Granodiorite with enclaves
  - Kmr Monzodiorite and diorite of Rocky Ridge
- JURASSIC(?) DEPOSITS**
- Mzma Metavolcanic rocks

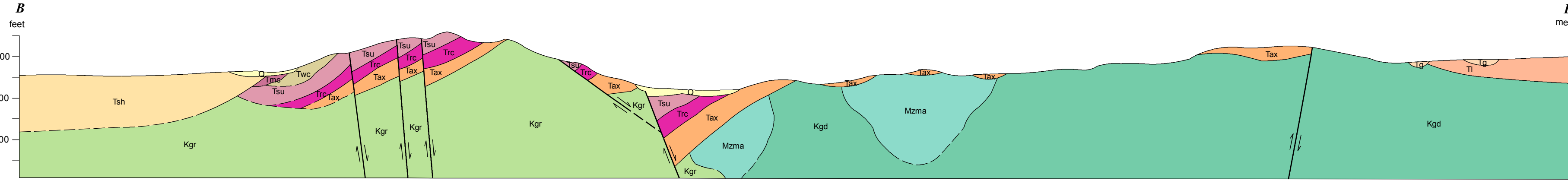
Symbology (per FGDC-STD-013-2006)

- Contact** Solid where certain and location accurate; long-dashed where approximate; short-dashed where inferred; dotted where internal; queried if identity or existence uncertain.
- Fault** Solid where certain and location accurate; long-dashed where approximate; dotted where concealed; queried if identity or existence uncertain. Ball on downthrown side. Arrows show relative motion.
- Preliminary, incomplete surficial contact** Solid where certain and location accurate; long-dashed where approximate.
- Preliminary, incomplete fault** Solid where certain and location accurate; long-dashed where approximate; dotted where concealed.
- Gravel contact** Location approximate.
- Vein** Showing dip
- Lineament**
- Anticline**
- Line of cross section**
- Strike and dip of bedding**
- 30° Inclined
  - 30° Inclined, approximate
  - ⊕ Horizontal
- Strike and dip of compact foliation in ash-flow tuff**
- 30° Inclined
  - ⊕ Horizontal
- Strike and dip of flow banding or flow foliation in igneous rocks**
- 30° Inclined
- Strike and dip of metamorphic foliation**
- 30° Inclined
- Strike and dip of joints**
- 30° Inclined
  - Vertical or near-vertical
- Strike and dip of platy joining in lava**
- 30° Inclined
- Sample locality**
- GC-213
  - Sample locality
- Pediment surface developed on bedrock**  
Deposits mapped as unit Qppo

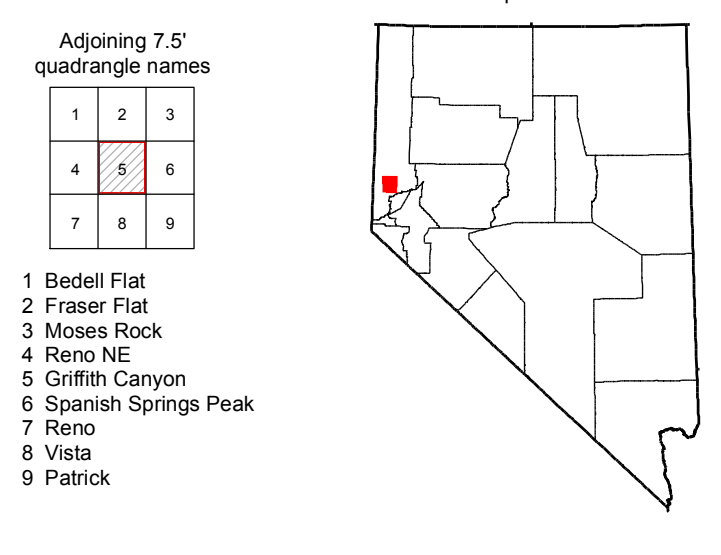
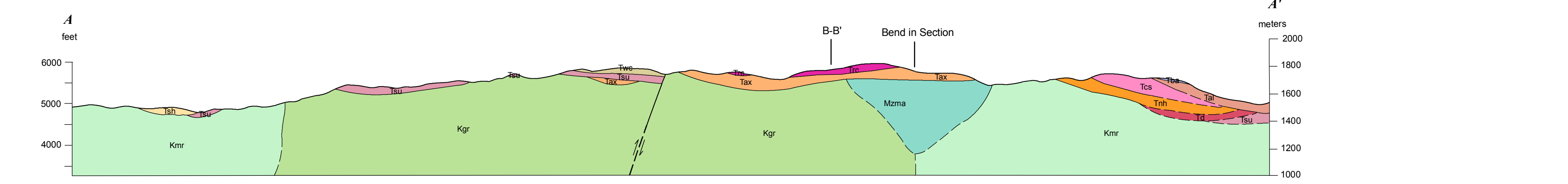


# PRELIMINARY GEOLOGIC MAP OF THE GRIFFITH CANYON QUADRANGLE, WASHOE COUNTY, NEVADA

Larry J. Garside, Fred L. Nials, and Alan R. Ramelli  
2010



Quaternary units combined for cross sections; small areas of Quaternary not shown.



Nevada Bureau of Mines and Geology  
Clark School of Earth Sciences and Engineering  
College of Science  
University of Nevada, Reno

Field work done in 1998-1999, 2005-2009  
Supported by the U.S. Geological Survey STATEMAP Program  
(Agreement No. 1434-HQ-95-AG-01502 and G09AC00116)

**DRIFT**  
Preliminary geologic map  
Has not undergone office or field review  
Will be revised before publication

Edited by Daphne D. LaPointe  
Compilation by Larry Garside  
Cartography and map production in ESRI ArcGIS v9.3 (ArcGeology v1.3)  
by Matthew Richardson and Jennifer Mauldin  
First Edition, February 2010  
Printed by Nevada Bureau of Mines and Geology

This map was printed on an electronic raster directly from digital files. Dimensional calibration may vary between electronic displays and a 1:25,000 scale print. Scale and proportions may not be exact on copies of this map.

For sale by:  
Nevada Bureau of Mines and Geology  
2175 Raggio Plaza  
Reno, Nevada 89512  
ph: (775) 784-6061, ext. 2  
www.nbmng.unr.edu; nbmgales@unr.edu