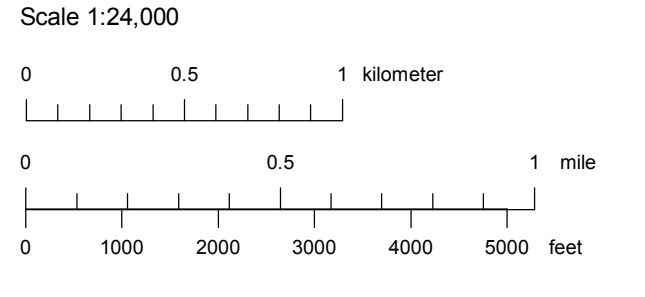
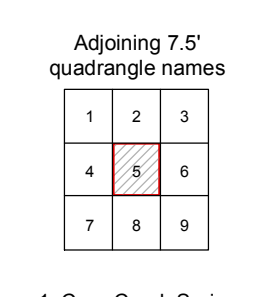


- ALLUVIAL-FAN DEPOSITS**
 - Ofa Fan alluvium of active washes
 - Ofla Holocene fan alluvium
 - Ofl Early Holocene/Latest Pleistocene fan alluvium, undivided
 - Ofla Early Holocene/Latest Pleistocene fan alluvium
 - Ofls Latest Pleistocene fan alluvium
 - Oflm Middle to Late Pleistocene fan alluvium
 - Oflm Early to Middle Pleistocene fan alluvium
- LAS VEGAS WASH DEPOSITS**
 - Oe Coppice dunes
 - Oa Alluvium of active washes
 - Ola Holocene alluvium
 - Olv Early Holocene/Late Pleistocene alluvium, undivided
 - Olv Early Holocene/Late Pleistocene alluvium
 - Olv Late Pleistocene alluvium
- FINE-GRAINED DEPOSITS OF TULE SPRINGS**
 - Otl Tufa deposits, contemporaneous with Ots
 - Ots Unit E
 - Otsd Unit D
 - Otsa Unit C
 - Otsb Unit B
 - Otsa Unit A (shown only in cross section)
 - Otsu Undivided fine-grained deposits of Tule Springs
- SEDIMENTARY ROCKS**
 - Pmb Bird Spring Formation, undivided (Chestarian to Leonardian)
 - Mis Indian Springs Formation (Upper Mississippian)
 - Mbw Battleship Wash Formation (Upper Mississippian)
- MONTE CRISTO GROUP (Upper and Lower Mississippian)**
 - Mmy Yellowpine Limestone (Lower Meramecian and Upper Osagean)
 - Mmb Bullion Dolomite (Lower Meramecian to Middle Osagean)
 - Mma Anchor Limestone (Osagean)
 - Mmd Dawn Limestone (Lower Osagean and Kinderhookian)
 - MDu

See accompanying text for full unit descriptions, notes, and references for this map.

- Symbology (per FGDC-STD-013-2006)**
- Contact** Solid where certain and location accurate, long-dashed where approximate, queried if identity or existence uncertain.
 - Folds** Long-dashed where location is approximate; dotted where location is concealed.
 - Anticline** Long-dashed with upward-pointing triangles.
 - Syncline** Long-dashed with downward-pointing triangles.
 - Strike and dip of bedding** Inclined: short horizontal line with dip symbol; Overturned: short horizontal line with dip symbol and a curved line.
 - Tufa Alignment** Dashed line with small circles.
 - Normal fault** Solid line with triangles on the downthrown side.
 - Thrust fault** Solid line with triangles on the upthrown side.
 - Folds** Long-dashed with upward-pointing triangles.
 - Concealed fault strands** Dashed line with triangles.
 - Line of cross section** Solid line with 'A' and 'A'' markers.



- 1 Corn Creek Springs
- 2 Gass Peak
- 3 Gass Peak NE
- 4 Tule Springs Park
- 5 Gass Peak SW
- 6 Valley
- 7 Blue Diamond NE
- 8 Las Vegas NW
- 9 Las Vegas NE

Projection: Universal Transverse Mercator, Zone 11, North American Datum 1927 (m)
 Base map: U.S. Geological Survey Gass Peak SW 7.5' Quadrangle (1974, Photorevised 1983)

SOURCES OF GEOLOGIC DATA

- Page (Paleozoic rocks), 1998
- Ramelli (alluvial fans and fine-grained deposits), 2007-2009
- Manker and Springer (fine-grained deposits), 2004-2009

NEVADA BUREAU OF MINES AND GEOLOGY
 Mackay School of Earth Sciences and Engineering
 University of Nevada, Reno

Field work done in 1998, 2004-2009
 Supported by the Bureau of Land Management (Agreement No. FAAD70026)
 DRAFT Preliminary geologic map
 Has not undergone office or field review
 Will be revised before publication

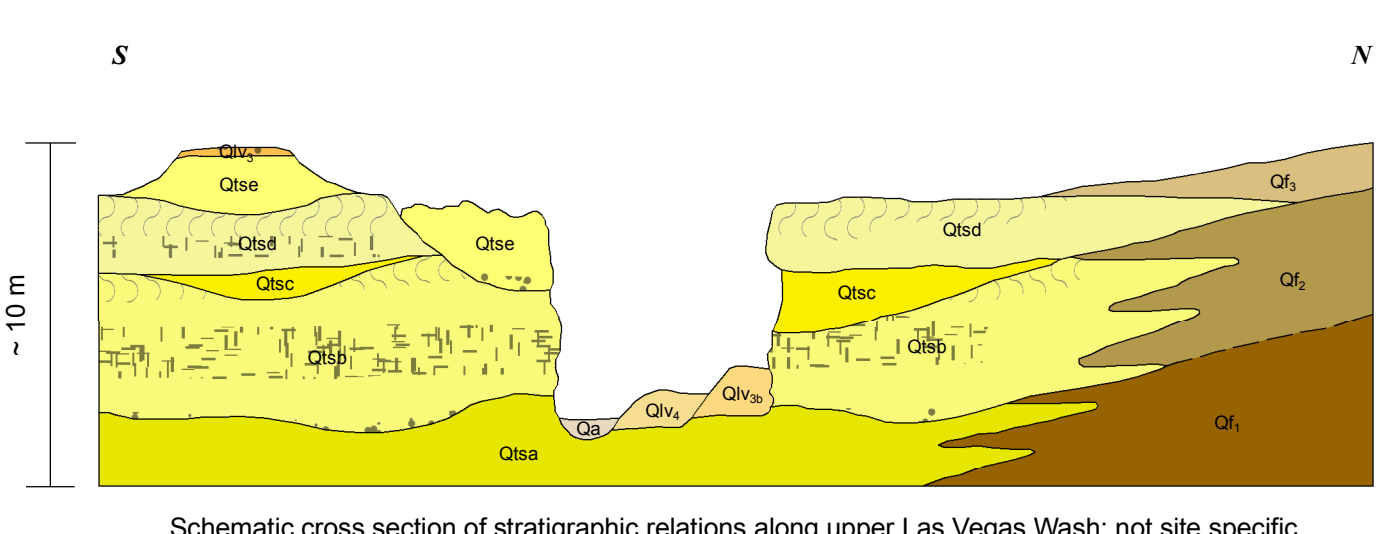
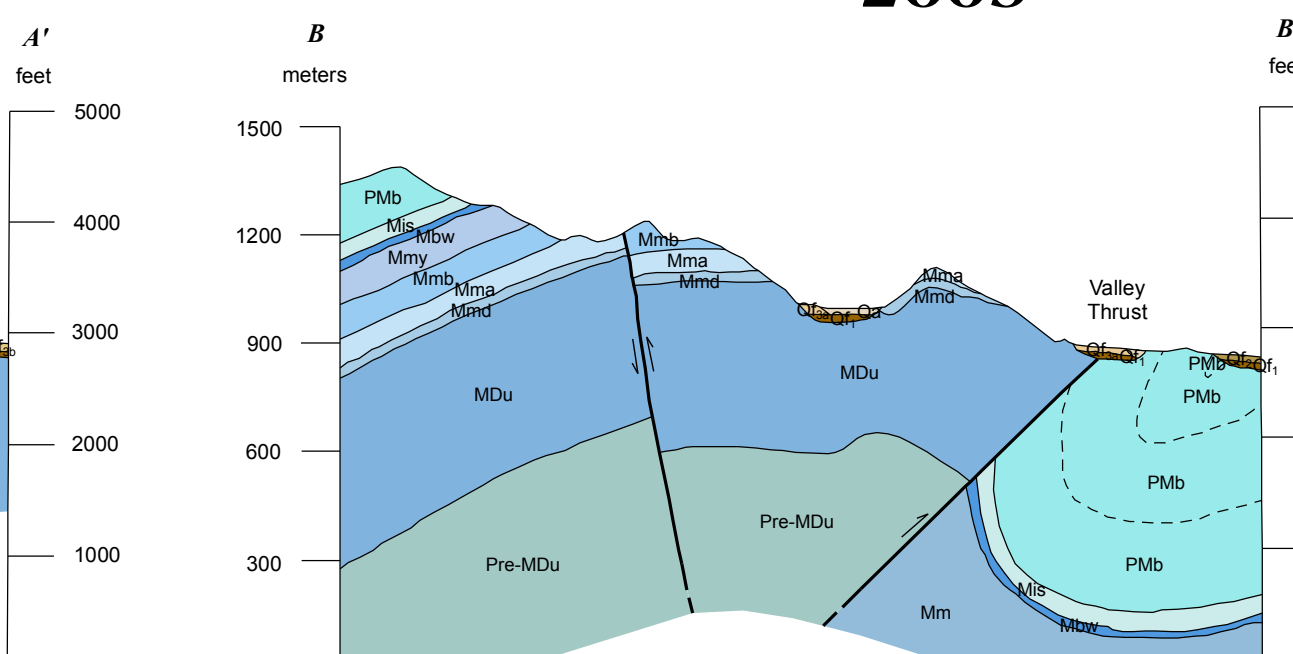
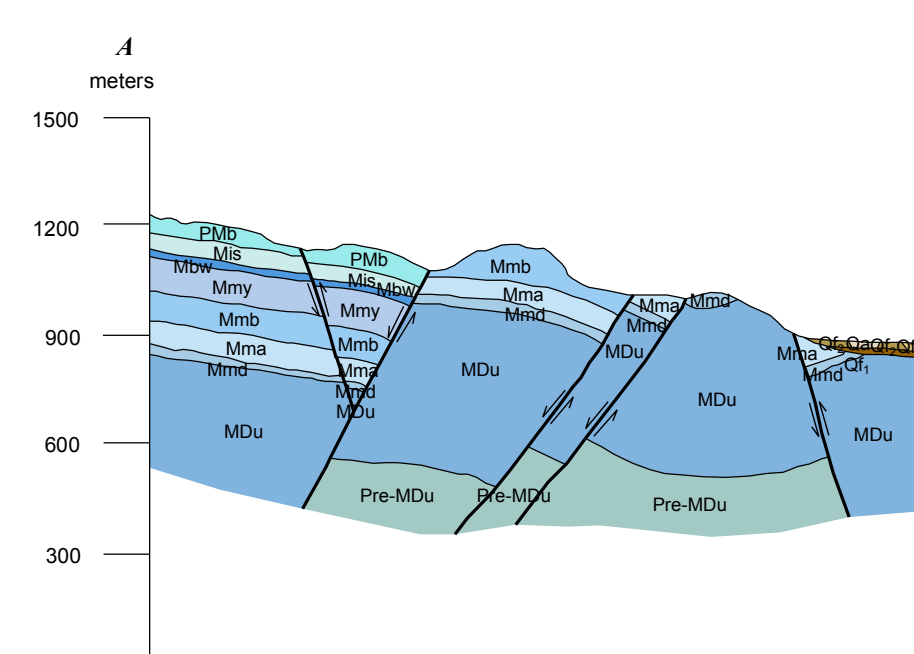
Compilation by Alan Ramelli
 Cartography and map production in ESRI ArcGIS v9.3 (ArcGeology v1.2)
 by Matthew Richardson
 First Edition August 2009
 Printed by Nevada Bureau of Mines and Geology

This map was printed on an electronic raster device from digital files. Dimensional calibration may vary between raster and vector files. Dimensions on the raster files, and raster map sheets, may not be exact on copies of this map.

For sale by:
 Nevada Bureau of Mines and Geology
 2175 Raggio Parkway
 Reno, NV 89512
 ph: (775) 784-6691, ext. 2
 www.nbmgs.unr.edu; nbmg@unesr.edu

PRELIMINARY GEOLOGIC MAP OF THE GASS PEAK SW QUADRANGLE, CLARK COUNTY, NEVADA

Alan R. Ramelli, William R. Page, Craig R. Manker, and Kathleen B. Springer
 2009



Schematic cross section of stratigraphic relations along upper Las Vegas Wash; not site specific.

