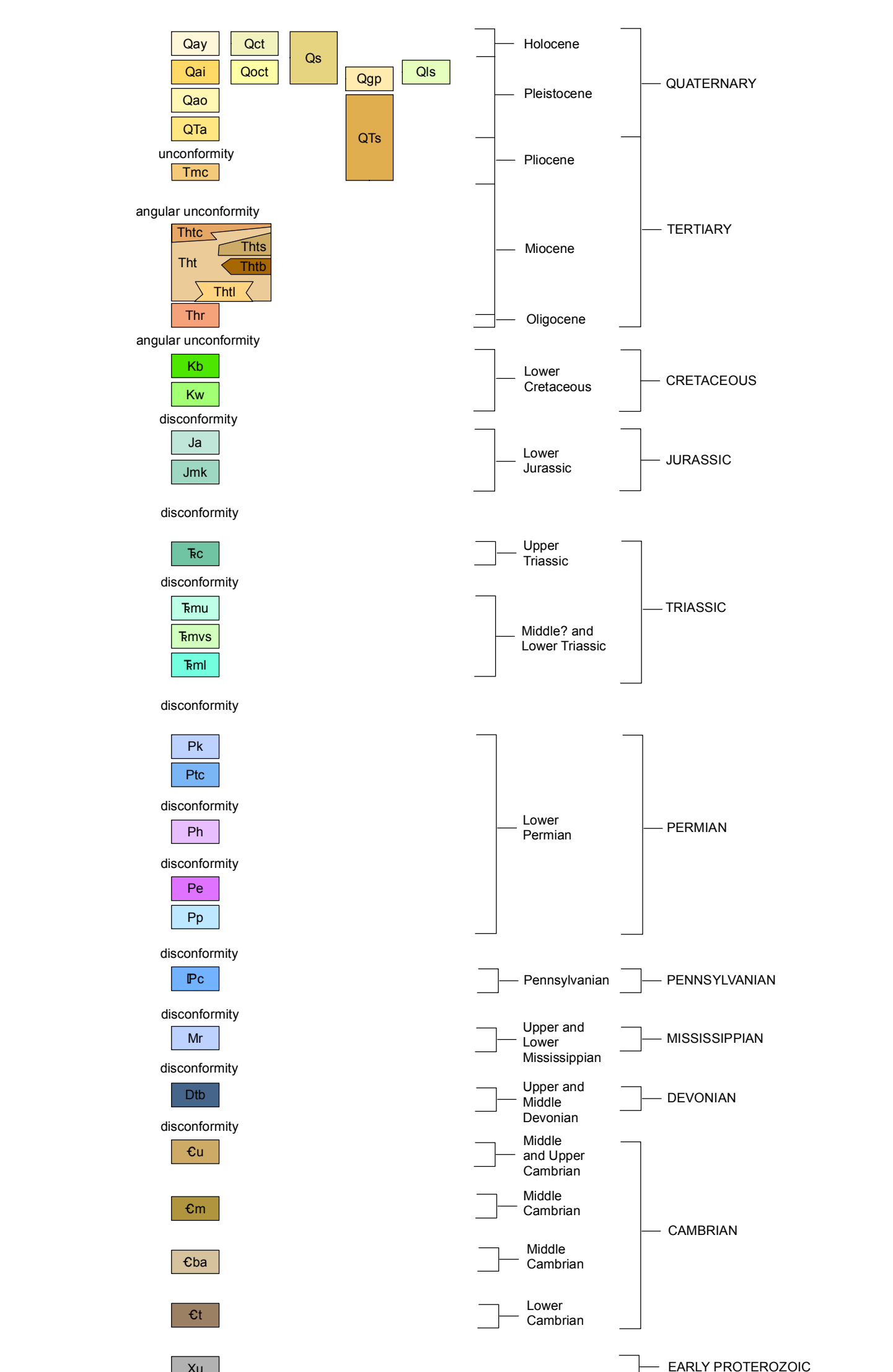


- SURFICIAL DEPOSITS**
- Qay Young alluvium
 - Qal Intermediate alluvial and pediment deposits
 - Qcl Colluvial, talus, and rockfall deposits
 - Qs Dune and sand sheet deposits
 - Qgp Gypsiferous deposits
 - Qls Landslide deposits
 - Qoct Older colluvial, talus and rockfall deposits
 - Qao Older alluvial and pediment deposits
 - Qta Old alluvial deposits
 - Qts Sandy alluvial deposits
- BEDROCK UNITS**
- Tmc Muddy Creek Formation, Horse Spring Formation, and Thumb Member
 - THsc Conglomerate and sandstone unit
 - THss Sandstone and conglomerate unit
 - THs Sandstone, siltstone, gypsum, calcareous sandstone and tuff unit
 - THmb Megabreccia beds
 - THl Algal limestone unit
 - Thr Horse Spring Formation, Rainbow Gardens Member
 - Ks Baseline Sandstone
 - Kw Willow Tank Formation
 - Ja Aztec Sandstone
 - Jmk Kayenta and Moenave Formations
 - Tc Chinle Formation
 - Moenkopi Formation
 - Timu Upper red member
 - Timvs Shinarump, middle red, and Virgin Limestone Members, undivided
 - Tim Lower red member
 - Pk Kaibab Formation
 - Ptc Toroweap Formation and Coconino Sandstone, undivided
 - Ph Hermit Shale
 - Pe Esplanade Sandstone
 - Pp Pakaon Limestone
 - Pc Calville Limestone
 - Mr Redwall Limestone
 - Dtb Temple Butte Limestone
 - Cu Unclassified Dolomite
 - Cm Muav Limestone
- These units shown in cross section only**
- Cba Bright Angel Shale
 - Ct Tapeats Sandstone
 - Xu Undivided crystalline rocks

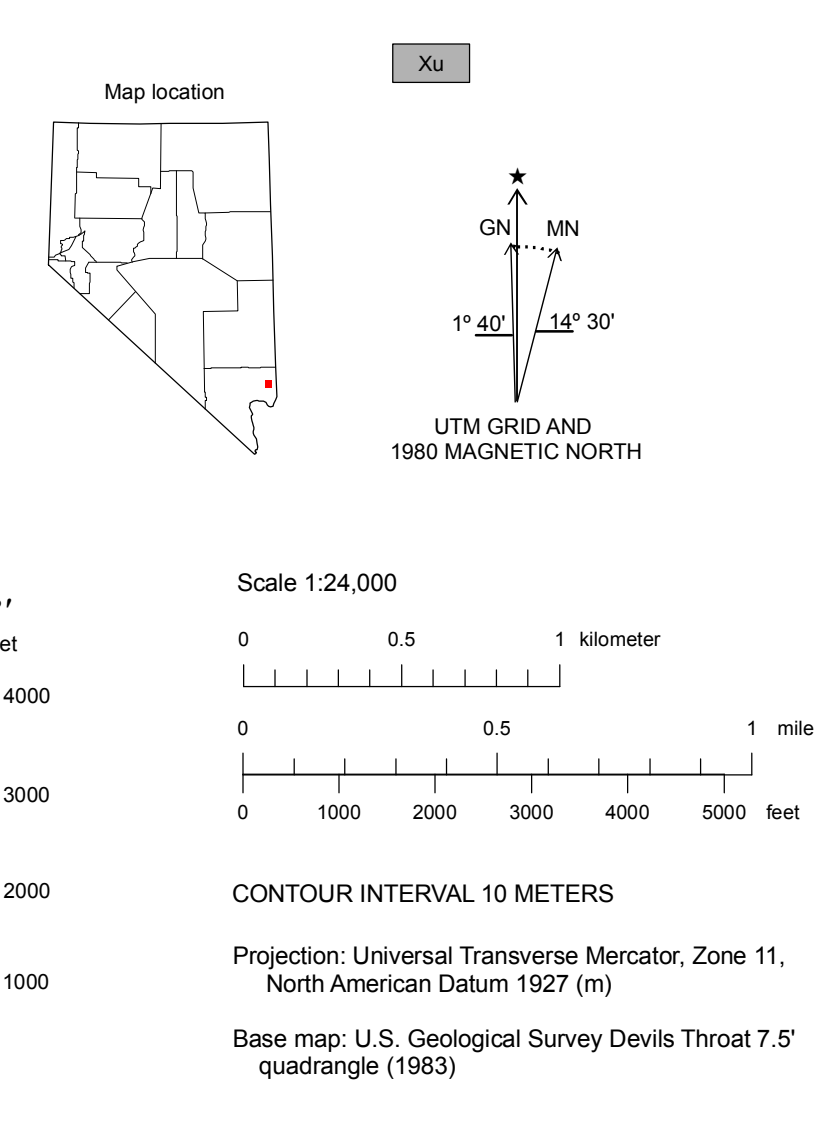
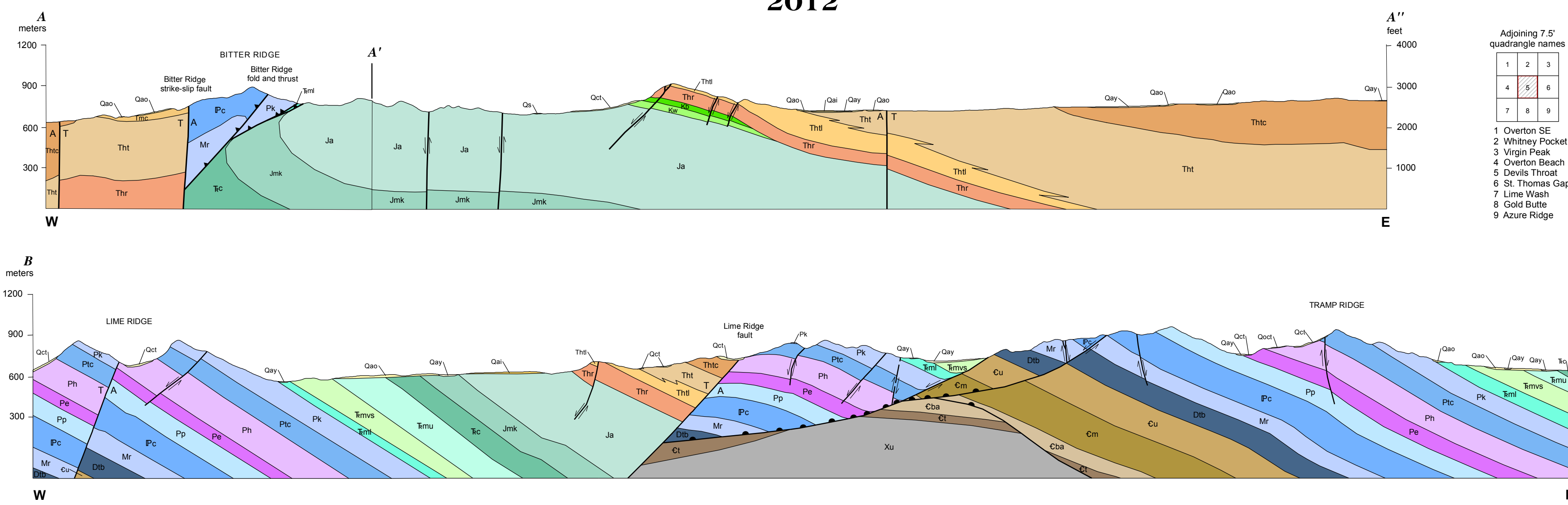
- Symbology (per GDC-STD-013-2006)**
- Contact Solid where certain and location accurate; long-dashed where approximate; dotted where concealed; Rectangles on upthrown block.
 - Reverse fault Dashed where approximate; dotted where concealed; Rectangles on upthrown block.
 - Fault, unknown offset Solid where certain and location accurate; short-dashed where inferred.
 - Attenuation fault Dashed where approximate; Hachures on upper plate.
 - Normal fault Solid where certain and location accurate; long-dashed where approximate; short-dashed where inferred; dotted where concealed; Ball on downthrown side; arrow shows bearing and plunge of slickensides; On cross sections, arrows show relative motion.
 - Anticline Solid where certain and location accurate; dashed where approximate; dotted where concealed.
 - Syncline Solid where certain and location accurate; dashed where approximate; dotted where concealed.
 - Strike-slip fault Solid where certain and location accurate; dashed where approximate; dotted where concealed; queried if identity or assistance uncertain; Arrows show relative motion. On cross sections, Arrows show relative motion.
 - Monocline Solid where certain and location accurate. Arrow shows direction of dip.
 - Thrust fault Solid where certain and location accurate; dashed where approximate; dotted where concealed; Sawtooth on upper plate.
 - Line of cross section A'-A'
 - Sinkhole
 - Strike and dip of bedding
 - Inclined
 - Overturned
 - Vertical



GEOLOGIC MAP OF THE DEVILS THROAT QUADRANGLE, CLARK COUNTY, NEVADA

L. Sue Beard¹ and David J. Campagna²

¹U.S. Geological Survey, Flagstaff AZ; ²Department of Geology and Geography, West Virginia University 2012



Suggested citation: Beard, L.S., Campagna, D.J., 2012. Geologic Map of the Devils Throat quadrangle, Clark County, Nevada. Nevada Bureau of Mines and Geology Map 181, scale 1:24,000, 9 p.

Nevada Bureau of Mines and Geology
Mackay School of Earth Sciences and Engineering
University of Nevada, Reno

Field work done in 1989-1990
Supported by the U.S. Geological Survey and the Bureau of Land Management (Agreement No. FA070026)
Modified from USGS Open-File Report 91-132

PEER-REVIEWED MAP
Office review by George Billingsley (USGS), Alan R. Ramelli (NBMG), and Paul Umhoefer (NAU)
Field review by James E. Fields (NBMG) and George Varhalmi (BLM)

Compilation by L. Sue Beard and David J. Campagna
Edited by Daphne D. LaPointe
Cartography and map production in ESRI ArcGIS v9.3
by Heather Armento and Jennifer Maudlin
First Edition, March 2013
Printed by Nevada Bureau of Mines and Geology

For sale by:
Nevada Bureau of Mines and Geology
2175 Raggio Parkway
Reno, Nevada 89512
ph: (775) 784-6951, ext. 2
www.nbgm.unr.edu; nbgm@unesr.edu