

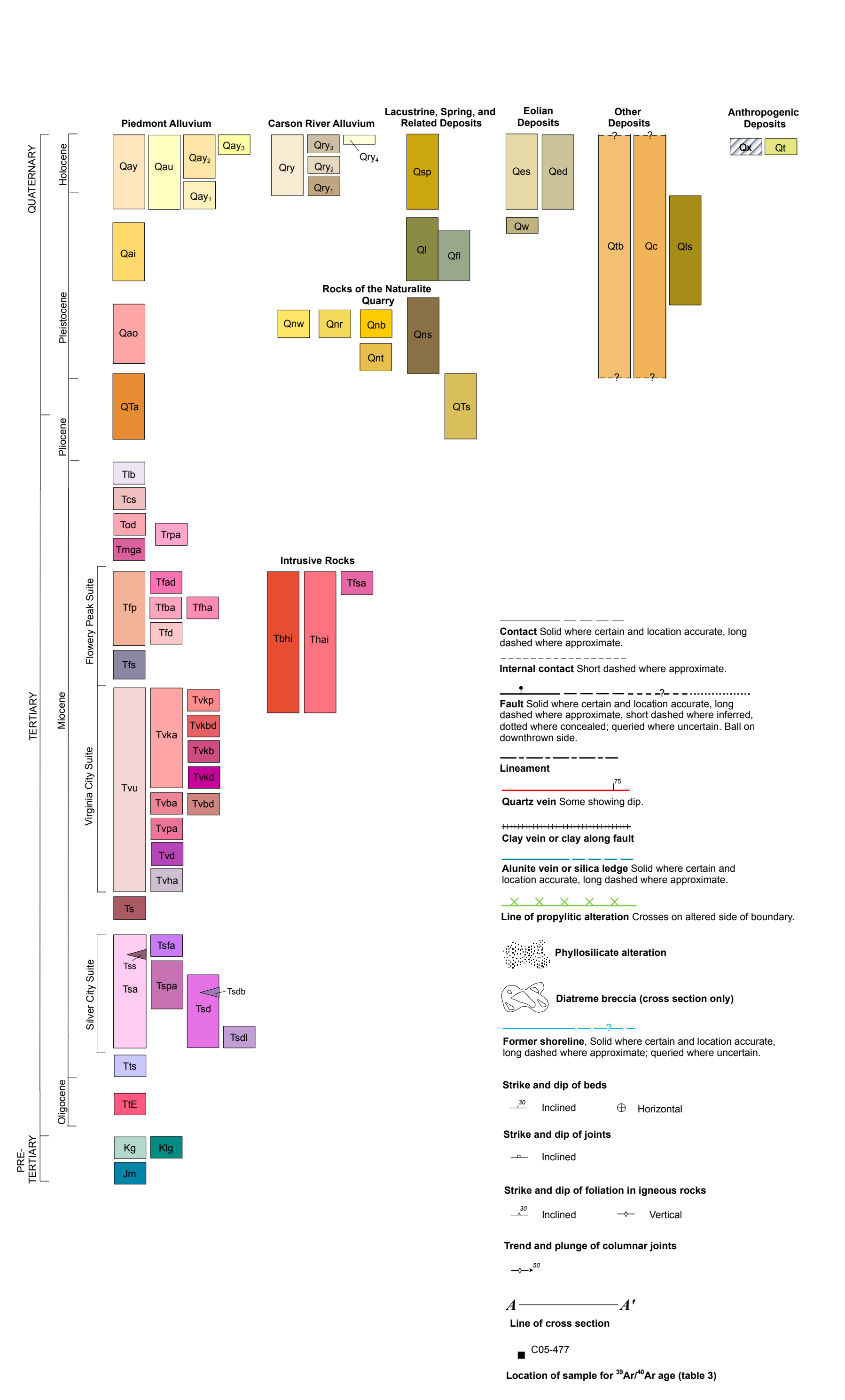
- QUATERNARY DEPOSITS**
- Anthropogenic Deposits**
- Qa Mine waste and mill tailings
  - Qad Extensively disturbed areas
- Eolian Deposits**
- Qed Eolian dunes
  - Qes Eolian sand sheet
  - Qsp Spring deposits
- Piedmont Alluvial Deposits**
- Qau Undivided piedmont alluvium
  - Qay Undivided young piedmont alluvium
  - Qay1 Youngest active alluvium
  - Qay2 Young active alluvium
  - Qay3 Young inactive alluvium
  - Qaw Alluvial and eolian deposits of the Wymah(?) Alloformation (Morrison, 1964, 1991)
  - Qai Intermediate-age alluvium
  - Qao Old alluvium
- Carson River Alluvial Deposits**
- Qry Carson River alluvial deposits, undivided
  - Qry1 Active channel and bars of the Carson River
  - Qry2 Young mud, sand, and gravel deposits of the Carson River
  - Qry3 Intermediate-age mud, sand, and gravel deposits of the Carson River
  - Qry4 Older Carson River alluvial deposits
- Hillslope and Mass-Wasting Deposits**
- Qc Holocene and Pleistocene colluvium
  - Qls Landslide deposits
  - Qbt Basalt talus
- Fluvial and Lacustrine Deposits of Lake Lahontan**
- Qll Undivided lacustrine deposits
  - Qllf Fluvio-lacustrine deposits
- Deposits of the Naturalite Dome Area**
- Qns Sedimentary deposits
  - Qnw Welded rhyolite airfall
  - Qnr Glassy rhyolite
  - Qnb Rhyolite breccia
  - Qnt Tuff ring deposits
- QUATERNARY AND TERTIARY DEPOSITS**
- Pleistocene to Pliocene alluvium**
- Qta Pleistocene to Pliocene alluvium
  - Qts Spring deposits
- MIOCENE ROCKS**
- Lousetown basalt**
- Tb Lousetown basalt
- Sedimentary rocks of the Chalk Hills**
- Tcs Sedimentary rocks of the Chalk Hills
- Dacite of Occidental Quarry**
- Tod Dacite of Occidental Quarry
- Biotite-hornblende-pyroxene andesite of Rocky Peak**
- Tpa Biotite-hornblende-pyroxene andesite of Rocky Peak
- Biotite-hornblende-pyroxene andesite of Mount Grosch**
- Tmpa Biotite-hornblende-pyroxene andesite of Mount Grosch
- Intrusive rocks**
- Tba Biotite-hornblende andesite of Sugarloaf
  - Tbr Biotite-hornblende intrusive rocks
  - Tbr1 Hornblende andesite intrusive rocks
- Rocks of the Flowery Peak magmatic suite**
- Tp Andesites of Flowery Peak, undivided
  - Tpad Biotite-hornblende-pyroxene andesite domes
  - Tba Biotite-hornblende andesite
  - Tba1 Hornblende andesite
  - Tbd Debris flows
  - Tbs Sedimentary rocks
- Rocks of the Virginia City magmatic suite**
- Tvu Virginia City andesites, undivided
  - Tva Andesites of the Kate Peak Formation
  - Tvpa Olivine-pyroxene andesite
  - Tvpad Biotite-bearing debris flows
  - Tvba Biotite-hornblende andesite flows
  - Tvad Andesite debris flows
  - Tvba1 Biotite-hornblende andesite flows
  - Tvbd Biotite-hornblende andesite debris flows
  - Tvpa1 Pyroxene andesite flows
  - Tvd Debris flows
  - Tvba1 Hornblende andesite flow rock
  - Tb Sedimentary rocks and tuff
- Rocks of the Silver City magmatic suite**
- Tsa Fine-grained andesite
  - Tspa Pyroxene andesite flows
  - Tsa1 Silver City andesite flows, undivided
  - Tsa2 Andesitic sandstone
  - Tsd Debris flows
  - Tsdb Biotite-bearing debris flows
  - Tsd1 Lower debris flows
- MIOCENE AND OLIгоценE ASH-FLOW TUFFS**
- Tt1 Santiago Canyon Tuff
  - Tt2 Tuff E
- PRE-TERTIARY ROCKS**
- Kg Leucogranitic rock
  - Kg1 Quartz diorite to granodiorite
  - Qm Metamorphic rocks

# GEOLOGIC MAP OF THE FLOWERY PEAK QUADRANGLE, STOREY AND LYON COUNTIES, NEVADA

Stephen B. Castor<sup>1</sup>, P. Kyle House<sup>2</sup>, Donald M. Hudson<sup>3</sup>, and Christopher D. Henry<sup>1</sup>

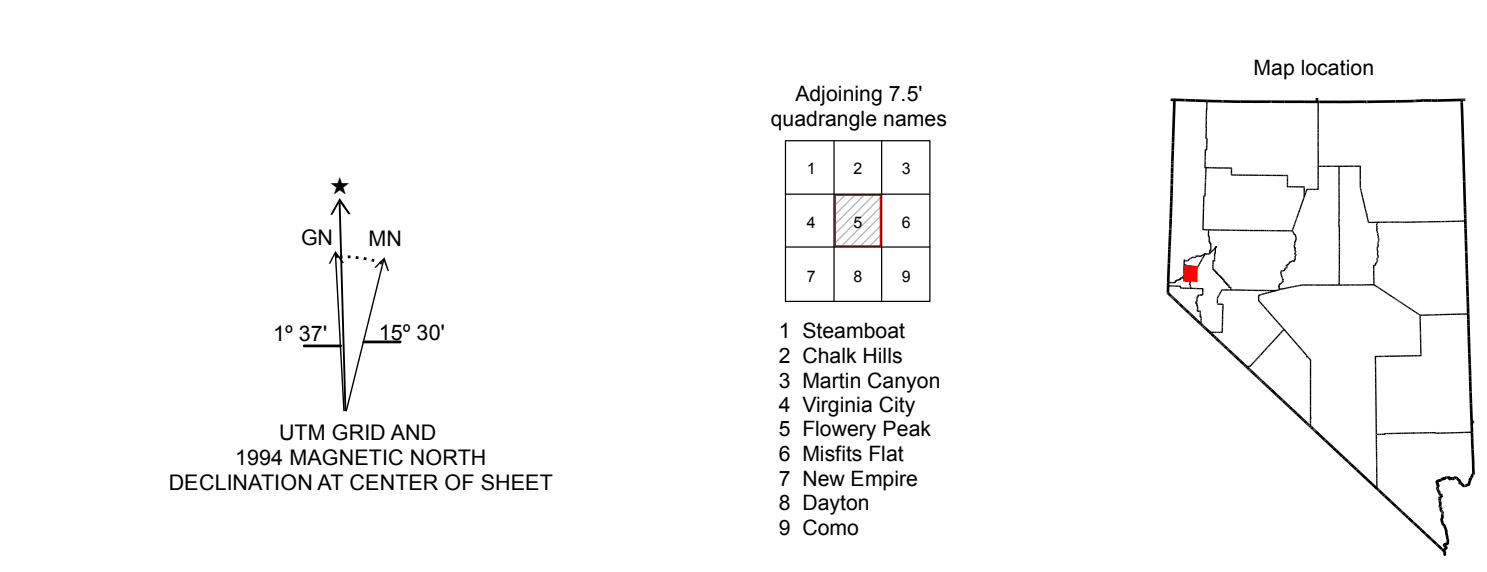
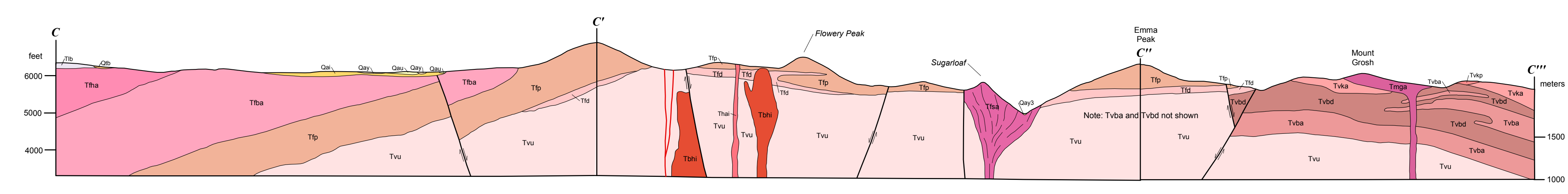
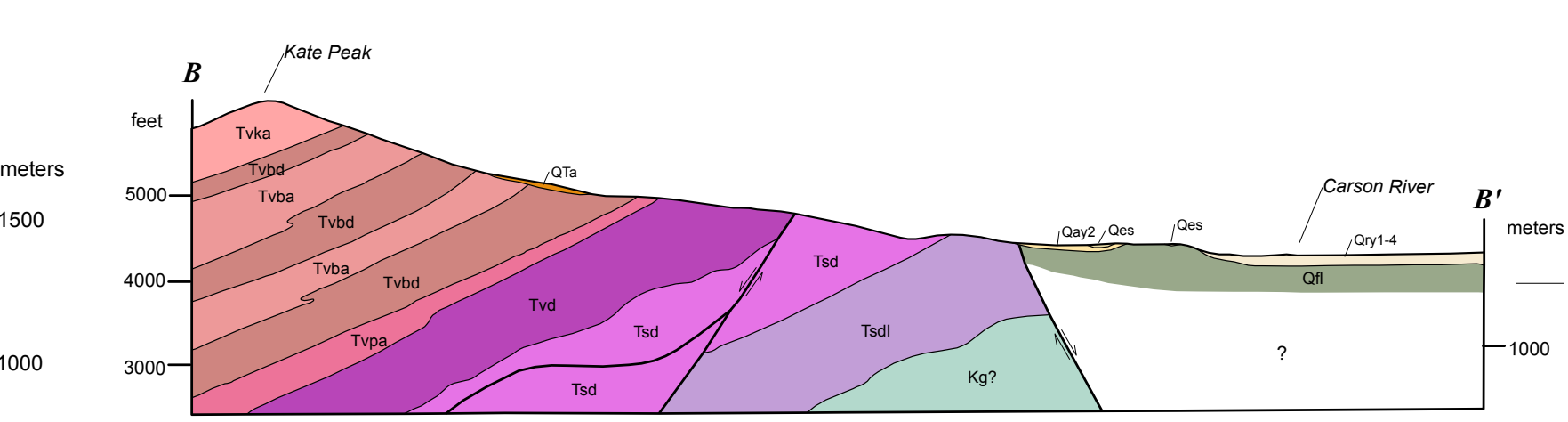
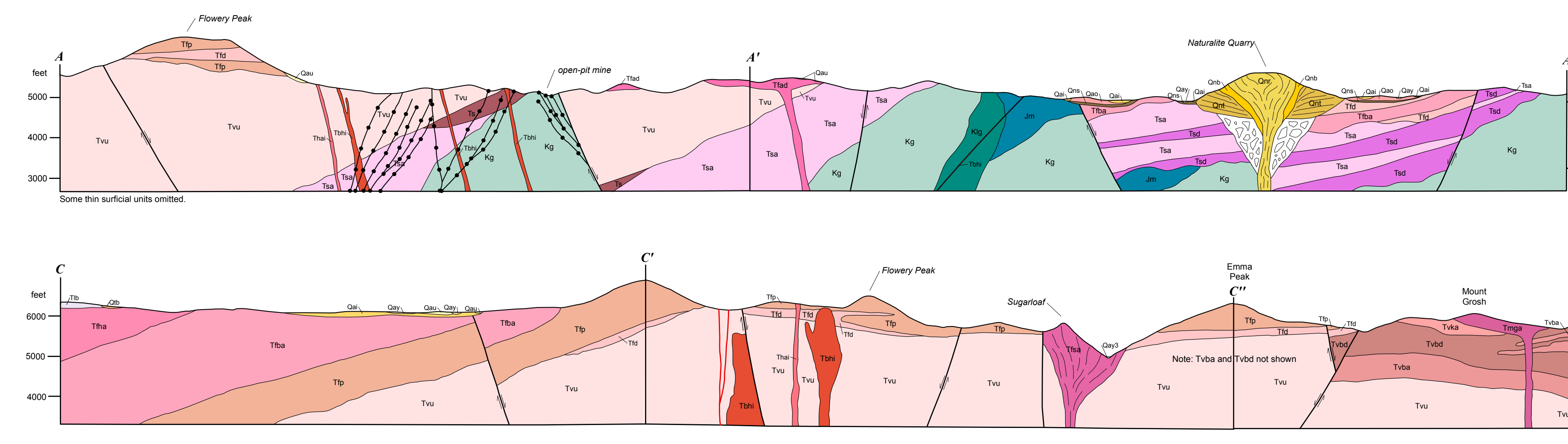
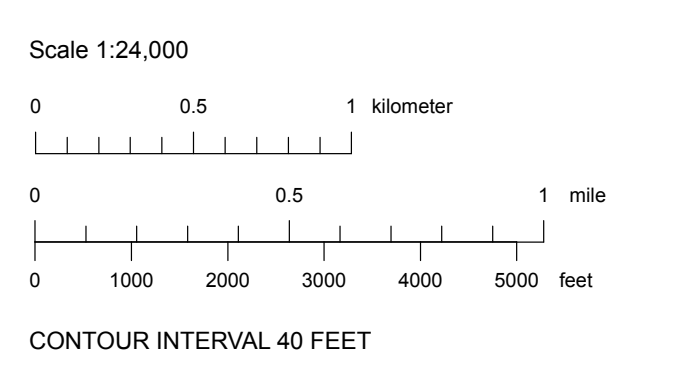
<sup>1</sup>Nevada Bureau of Mines and Geology, University of Nevada, Reno;  
<sup>2</sup>U.S. Geological Survey, Flagstaff, AZ;  
<sup>3</sup>Consulting Geologist

2013



See accompanying text for full unit descriptions and references for this map.

**Suggested citation:**  
Castor, S.B., House, P.K., Hudson, D.M., and Henry, C.D., 2013, Geologic map of the Flowery Peak quadrangle, Storey and Lyon counties, Nevada, Nevada Bureau of Mines and Geology Map 180, 24 p., scale 1:24,000.



Nevada Bureau of Mines and Geology  
Mark A. School of Earth Sciences and Engineering  
College of Science  
University of Nevada, Reno

Field work done in 2002-2005  
Supported by the U.S. Geological Survey STATEMAP Program  
(Agreements No. 04-HQ-AQ-002 and 05-HQ-AQ-014) and the  
Geological Society of Nevada

PEER-REVIEWED MAP

Office review by D.R. Boden, T.F. Bullard, J.V. Tingley, and S.L. Tingley  
Field review by D.R. Boden, L.J. Garslin, T.F. Bullard

Edited by Daphne B. Laffranchi and Christine Stock  
Completion by P. Kyle House and Stephen B. Castor  
Cartographic map production by ESR ArcGIS v9.3 (ArcGeology v1.3)  
by Jennifer Mauch, Heather Armento, and Irene M. Selye  
First edition, October 2013  
Printed by Nevada Bureau of Mines and Geology

This map was prepared on a geologic map data from digital files. Discrepancies between  
this map and the original data are shown in red. Corrections to the map data and  
this map are shown in red. This map is a reproduction of the original map and  
does not represent the original map. It is not a substitute for the original map.

For sale by:  
Nevada Bureau of Mines and Geology  
1175 Raggio Parkway  
Reno, Nevada 89512  
Tel: (775) 852-8760  
www.nbmp.unr.edu; nbmg@unr.edu