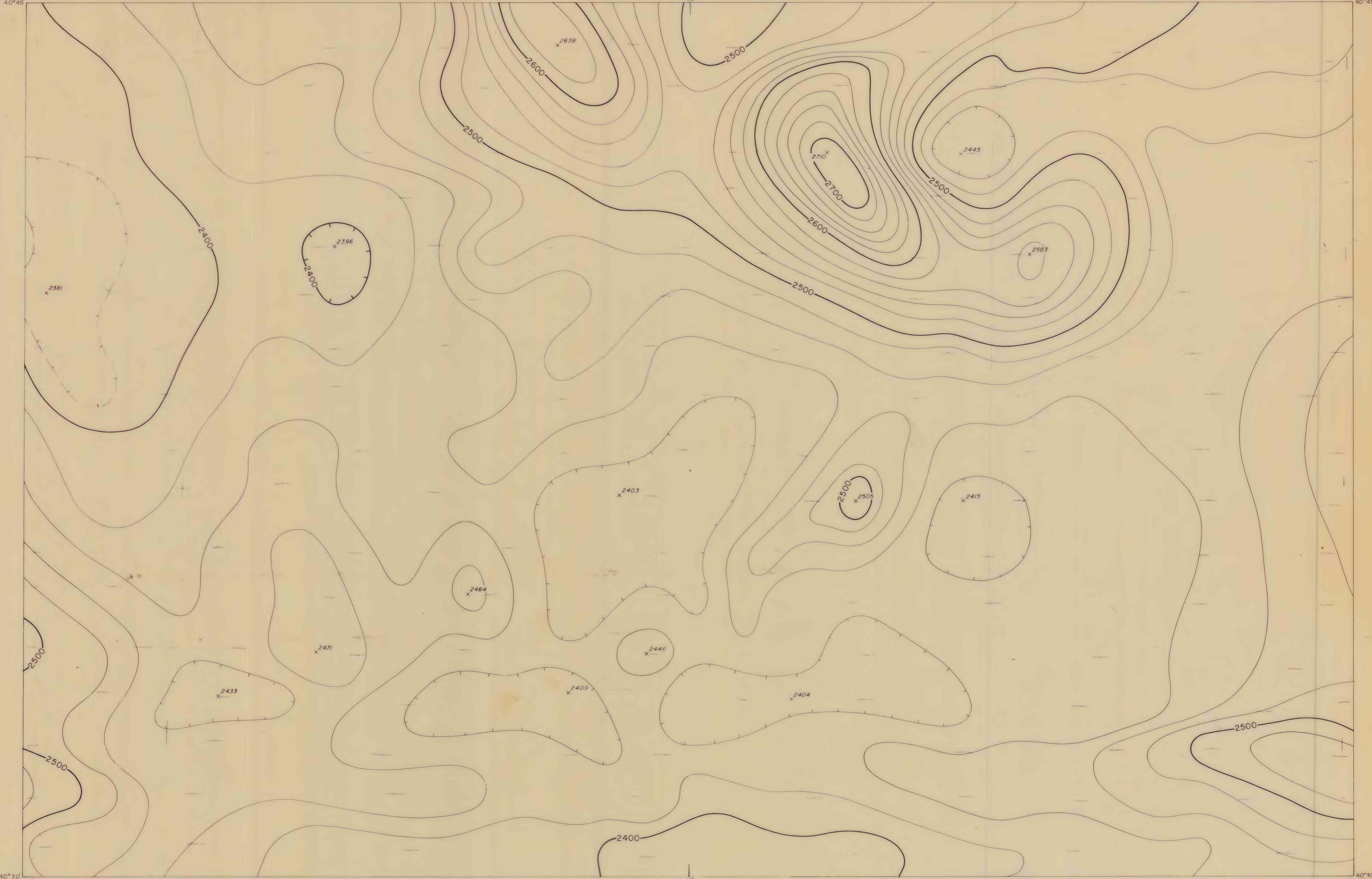


117°45'  
40°45'

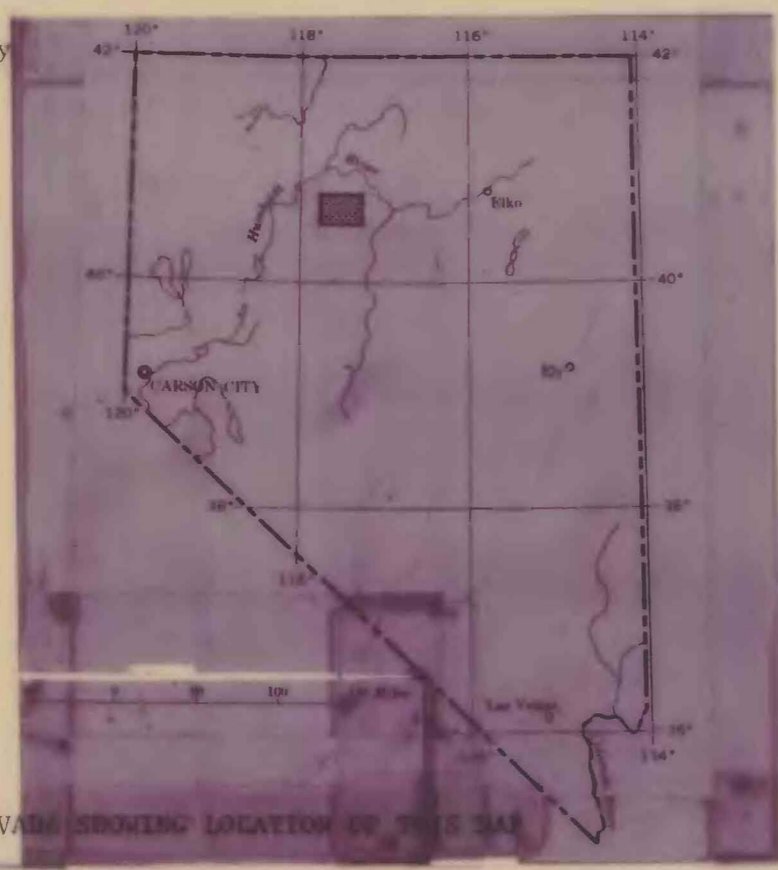
117°15'  
40°45'



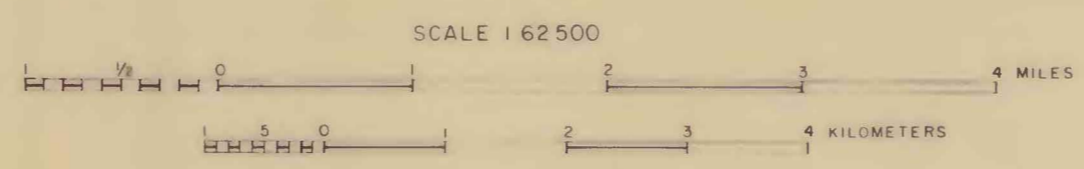
40°30'  
117°45'

40°30'  
117°15'

Grid from U.S. Geological Survey



TRUE NORTH  
MAGNETIC NORTH  
APPROXIMATE MEAN  
DECLINATION, 1973



Regional Gradient of 9 gammas per mile has been removed

Aeromagnetic survey flown at 9,000 feet barometric elevation and compiled by Scintrex Mineral Surveys, Inc. 1972

**AEROMAGNETIC MAP OF THE LEACH HOT SPRINGS AND CHERRY CREEK QUADRANGLES,  
PERSHING, HUMBOLDT, AND LANDER COUNTIES, NEVADA  
1973**

Contour intervals are 10 and 20 gammas.

This map is preliminary and has not been edited or reviewed for conformity to Geological Survey standards.

INDEX MAP OF NEVADA SHOWING LOCATION OF THIS MAP

**EXPLANATION**

Magnetic contours  
Showing total intensity magnetic field of the earth in gammas relative to arbitrary datum. Hatched to indicate areas of lower magnetic intensity. 10 gamma contours are dashed.

Location of measured maximum or minimum intensity within closed high or closed low

Flight path  
Showing location and spacing of data