

DEPARTMENT OF THE INTERIOR
UNITED STATES GEOLOGICAL SURVEY

GEORGE OTIS SMITH, DIRECTOR

BULLETIN 414

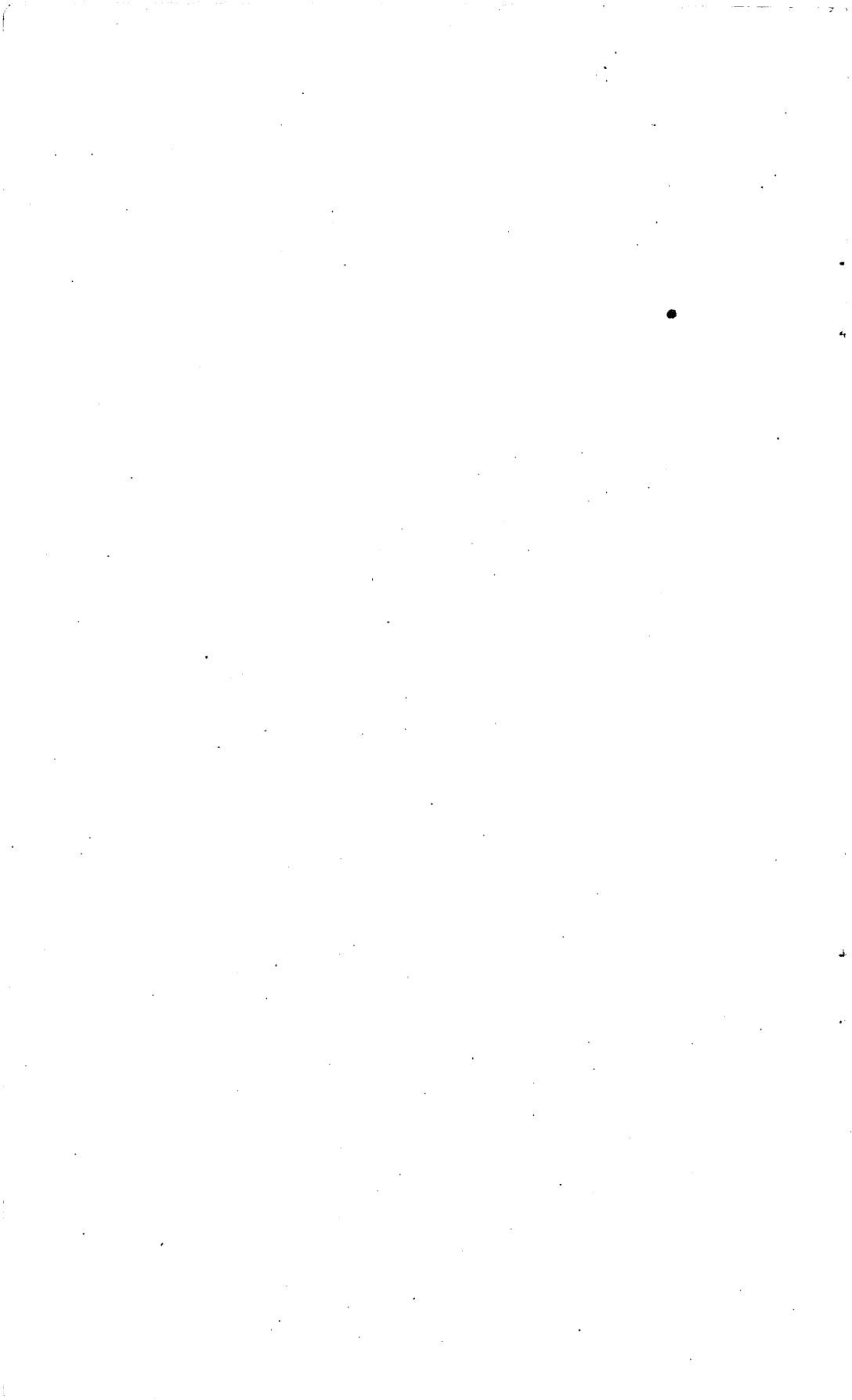
NOTES ON SOME MINING DISTRICTS
IN HUMBOLDT COUNTY, NEVADA

BY

FREDERICK LESLIE RANSOME



WASHINGTON
GOVERNMENT PRINTING OFFICE
1909



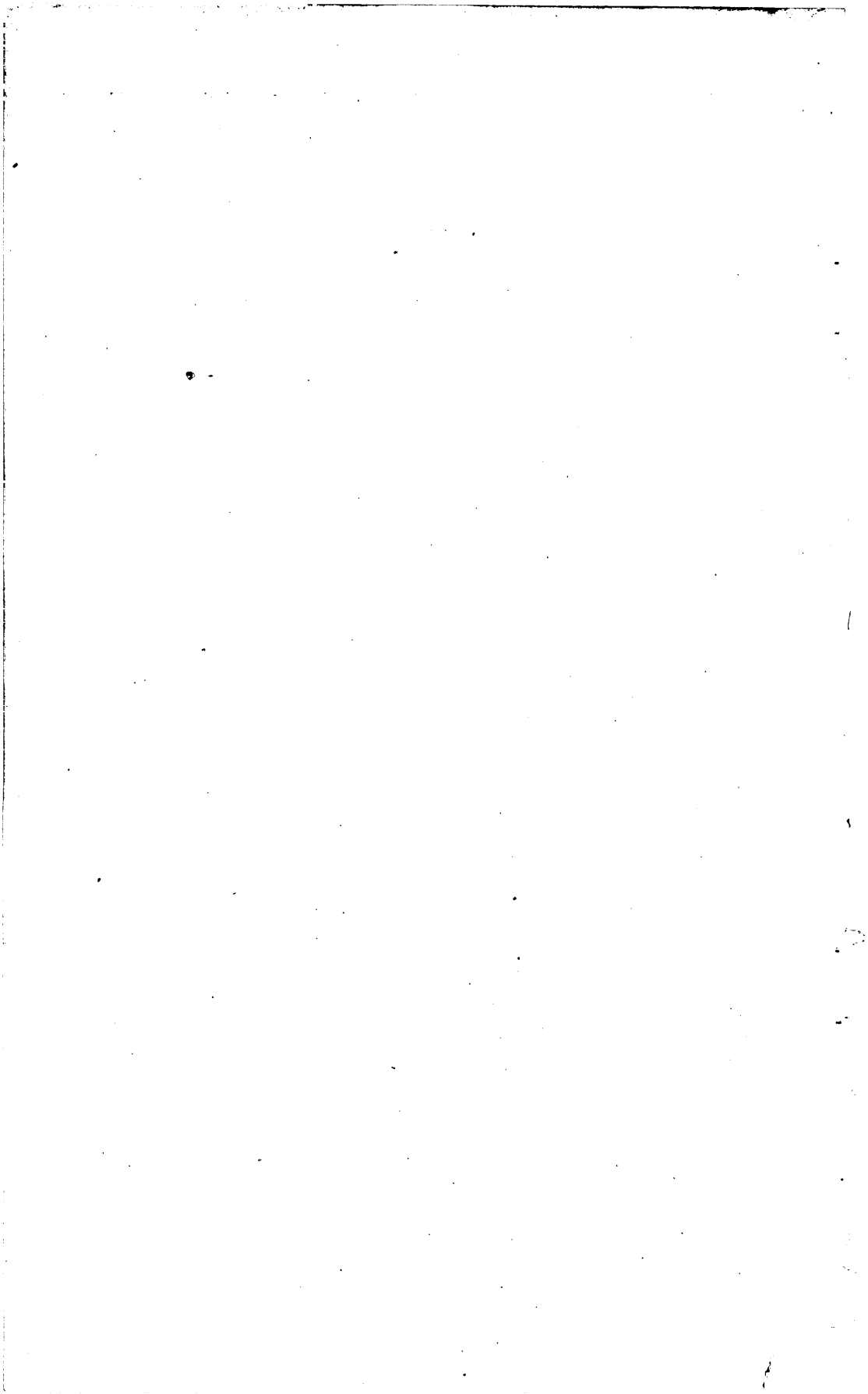
CONTENTS.

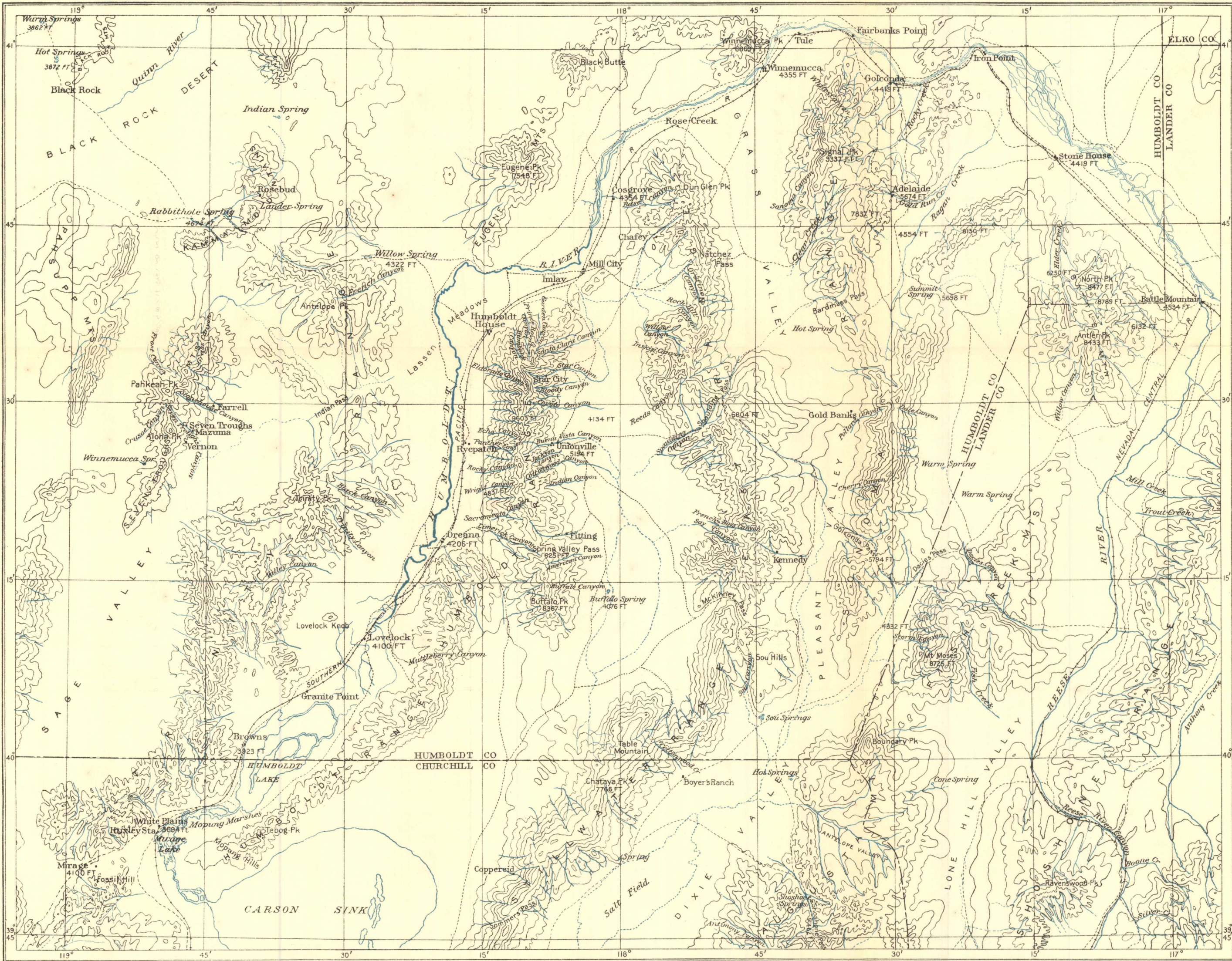
	Page.
Introduction.....	7
Itinerary.....	9
General history of mining development.....	10
Literature.....	13
Seven Troughs district.....	14
Introduction.....	14
General geology.....	15
Topography.....	15
Early exploration.....	16
Pre-Tertiary rocks.....	16
Tertiary volcanic rocks.....	18
Distribution and development of the mines.....	20
Character of the deposits.....	22
Outlook for the district.....	25
Rosebud district.....	25
Situation and history.....	25
General geology.....	26
Ore deposits.....	26
Red Butte district.....	27
Situation and history.....	27
General geology.....	28
Copper deposits.....	30
Humboldt Range.....	31
General geology.....	31
Humboldt Queen mine.....	33
Fitting and American Canyon.....	35
Unionville and vicinity.....	38
Star Canyon and vicinity.....	41
Ryepatch mine.....	43
Eldorado Canyon.....	45
North end of the Star Peak Range.....	46
General features of the ore deposits of the Humboldt Range.....	46
Pahute Range.....	47
General features.....	47
Chafey and the Sierra district.....	49
Kennedy.....	52
Nickel and cobalt deposits of Cottonwood Canyon.....	55
Coppereid.....	59
Sonoma Range.....	62
Mineralogy of the ore deposits.....	64
Introductory statement.....	64
Amphibole.....	64
Annabergite.....	64

Mineralogy of the ore deposits—Continued.	Page.
Argentite.....	64
Arsenopyrite.....	64
Axinite.....	64
Azurite.....	64
Barite.....	65
Bornite.....	65
Brochantite.....	65
Calcite.....	65
Cerargyrite.....	65
Chalcocite.....	65
Chalcopyrite.....	65
Chloanthite.....	65
Chrysocolla.....	65
Cinnabar.....	65
Copper.....	66
Covellite.....	66
Cuprite.....	66
Diopside.....	66
Epidote.....	66
Erythrite.....	66
Fluorite.....	66
Galena.....	66
Garnet.....	66
Gersdorffite.....	66
Gold.....	66
Hematite.....	67
Jamesonite.....	67
Jarosite.....	67
Magnetite.....	67
Malachite.....	67
Orthoclase.....	67
Proustite.....	67
Pyrrhotite.....	67
Silver.....	67
Sphalerite.....	67
Stibnite.....	68
Sulphur.....	68
Tetrahedrite.....	68
Tourmaline.....	68
Vesuvianite.....	68
Types of deposits represented in the region.....	68
Basis of classification.....	68
Antimonial silver deposits.....	69
Gold-silver deposits.....	69
Copper deposits.....	70
Antimony and quicksilver deposits.....	71
Nickel and cobalt deposits.....	71
Conclusion.....	71
Index.....	73

ILLUSTRATIONS.

	Page.
PLATE I. Outline map of parts of Humboldt, Lander, and Churchill counties, Nevada.....	7
FIGURE 1. Index map of Nevada, showing area covered in part by the reconnaissance of 1908.....	8
2. Sketch of folded limestone as exposed on the slope of a small hill north of the Humboldt Queen mine.....	34
3. Structural details at the Humboldt Queen mine.....	35
4. Sketch plan showing the geologic relations of the Arizona mine. . . .	39
5. Diagrammatic section of the Sheba ore body.....	42
6. Diagrammatic section of the Ryepatch ore body.....	44
7. Sketch section of the Auld Lang Syne vein zone.....	52





Based on the 40th Parallel Survey

OUTLINE MAP OF PARTS OF HUMBOLDT, LANDER, AND CHURCHILL COUNTIES, NEVADA

THE NORRIS PETERS CO., WASHINGTON, D. C.

5 0 5 10 15 Miles

Contour interval approximately 600 feet

1909

NOTES ON SOME MINING DISTRICTS IN HUMBOLDT COUNTY, NEVADA.

By FREDERICK LESLIE RANSOME.

INTRODUCTION.

In the apportionment of my field season in 1908, a period of six weeks was allotted to a reconnaissance examination of that part of Humboldt County, Nev., lying between the fortieth and forty-first parallels and the one hundred and seventeenth and one hundred and nineteenth meridians. Within this area of about 7,000 square miles (see fig. 1) are the Seven Troughs, Rosebud, Star, Unionville (Buena Vista), Humboldt, Fitting, Chafey (Dun Glen, Sierra), Kennedy, and Adelaide (Gold Run) districts,^a with many others of less note. North of the region particularly investigated is the Red Butte district and south of it is Coppereid (White Cloud district). Both of these were visited.

Some of the districts examined, such as Seven Troughs, Rosebud, and Red Butte, have been prospected only within the last two or three years; others, like Star City and Unionville, reached their acme of productiveness in the decade beginning with the year 1860 and have not yet participated in the recent general revival of mining activity in Nevada; one or two, like Chafey, have received new names and are being exploited in various ways that modern experience and ingenuity have devised for this purpose; still others, like Adelaide, have been intermittently active for over thirty years, oscillating between prosperity and decay.

All of the country traversed, with the exception of that adjacent to Red Butte, was mapped geologically by the Fortieth Parallel Survey, and that map,^b on a scale of 4 miles to the inch, with a contour interval of 300 feet, is still the best one, although there have been many

^a In general the names of districts as here used are those of the principal settlements. Some of the mining districts, as originally organized for purposes of record and regulation, embrace large tracts of which the names and boundaries have little significance except to local surveyors and official recorders.

^b U. S. Geol. Expl. 40th Par., atlas, Map V, 1876. (The topographic sheets are not contoured, but show the relief by shading.)

changes in place names in the thirty-three years that have elapsed since its publication. In general, the "granites" of this region, described as Archean in the Fortieth Parallel Survey reports, are intrusive in

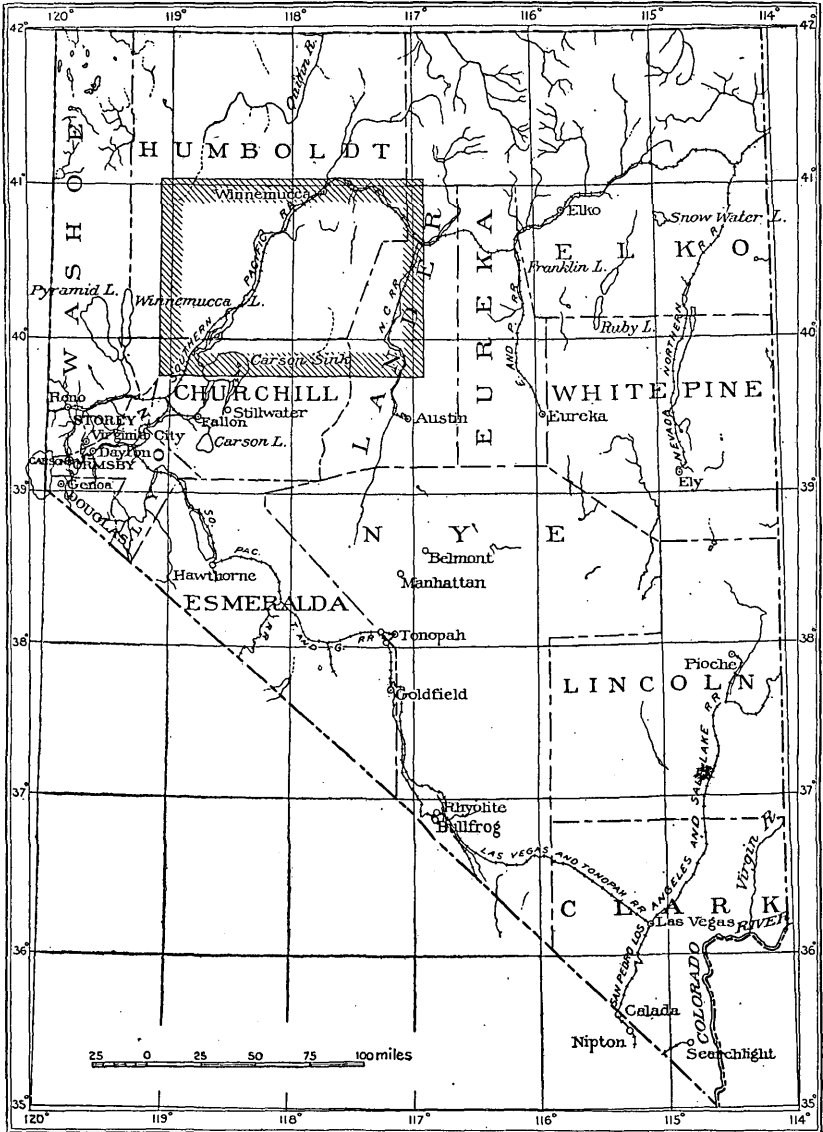


FIGURE 1.—Index map of Nevada, showing the area covered in part by the reconnaissance of 1908.

Mesozoic rocks; much of the material described as quartzite in the Triassic is rhyolite, and thorough study would change many of the names applied to the igneous rocks. During the last thirty years the mining districts of Humboldt County have received little attention

from geologists, and the present reconnaissance was undertaken in the belief that even a hasty review of the region, while not likely to yield results of much scientific importance, might serve as the basis for a preliminary report that should be of some value to those interested in the mining development of north-central Nevada.

It is a pleasure to acknowledge my indebtedness to the mining men of the region for courtesies too numerous to mention, and especially to Mr. John T. Reid, of Lovelock, and Mr. W. D. Adamson, of Winnemucca, who gave generously of their time and information.

ITINERARY.

From Lovelock, on the Southern Pacific Railroad (see Pl. I), a trip of five days' duration was made to the Seven Troughs district, 30 miles northwest of that town, and return. Two days were next spent in visiting Copperoid, in the White Cloud district, Churchill County, about 25 miles southeast of Lovelock. A wagon and team were then hired at Lovelock, and the Humboldt Range was crossed by way of the Humboldt Queen mine and Limerick and American canyons to Fitting, or Spring Valley, as it is sometimes called. Thence I drove north to Unionville, and from that place turned southeast across the East Range to Kennedy, on the west side of Pleasant Valley. From Kennedy the route was south, past Sou Springs to Boyer's ranch, on the northwest side of Dixie Valley, which was a convenient place from which to examine the nickel and cobalt mines of Cottonwood Canyon, in the Stillwater Range. From Boyer's ranch the return to Lovelock was made over the Stillwater Range by way of Kitten Spring, across the valley of Carson Sink, and through Cole Canyon, east of Oreana, which separates the Humboldt Range into two distinct divisions, the northern one being sometimes referred to as the Star Peak Range and the southern one as the Humboldt Lake Range.^a This trip occupied six days.

From Ryepatch, on the Southern Pacific Railroad, a visit was paid to the Ryepatch mine and from Humboldt House to a cinnabar prospect in Eldorado Canyon, on the west side of Star Peak. Humboldt House also was the starting point for a trip lasting three days to the Red Butte and Rosebud districts. The Chafey district and the Sheba mine in Star Canyon were reached from Mill City, and a short excursion was made from Golconda, 12 miles east of Winnemucca, to the Adelaide mine. The Galena and other districts accessible from Battle Mountain were not visited, the reconnaissance having already taken more time than could well be spared from other duties.

^a Louderback, G. D., Basin range structure of the Humboldt region: *Bull. Geol. Soc. America*, vol. 15, 1904, p. 294.

GENERAL HISTORY OF MINING DEVELOPMENT.

Mining activity began in this part of Nevada about the year 1860, with the organization of the Humboldt district, on the northwest slope of Star Peak. At that time the Central Pacific Railroad Company was not yet incorporated, supplies and machinery were hauled tediously in wagons from Marysville or Sacramento, and the project of a transcontinental railway was little more than a dream. The Star and Buena Vista districts were organized in 1861, and during the civil war and the recovery from that conflict these isolated desert communities attained their greatest prosperity. Mines were opened along both flanks of the Humboldt Range, and the settlements of Star City and Unionville soon grew to importance. At Oreana, on the banks of Humboldt River, smelting works were built to treat ore from the Montezuma mine, in the Trinity district, organized in 1863. Special interest attaches to this smelter, as it was the first in Nevada from which lead was shipped in commercial quantities, and it contests with Argenta, Mont., the honor of being the birthplace of the present gigantic silver-lead smelting industry of the United States. Its history, however, was brief; after various failures the furnaces were at length operated successfully in 1865, but were practically abandoned about 1870. The metallurgical processes employed have been described by R. W. Raymond^a and James D. Hague.^b The fuel was charcoal and the products of the furnace, silver bullion and an alloy of lead and antimony, were shipped to San Francisco.

On the east side of the Humboldt Range the discovery of a rich body of silver ore in the Sheba mine close to the surface led to the rapid growth of Star City from 1861 to 1865. The town had two hotels, express and telegraph offices, daily mails, and a population estimated at about 1,000. In 1871 Raymond^c reported the town as nearly abandoned, although at that time additional ore had been found below the levels from which the original bonanza had been stoped. At present only two men are living in the canyon, the mines are idle, two or three ruined stone cabins are all that remain of the town, and the little brook, once foul with tailings and town refuse, is now the home of trout and sparkles through diminutive hay meadows.

At Unionville the principal mine was the Arizona, owned and operated by Fall & Temple. Other important workings were those of the Silver, Pioneer, and Manitowoc mines. The Arizona mine is said to have been bought by John C. Fall in 1862 for \$5,000. Soon

^a Mineral resources of the States and Territories west of the Rocky Mountains, Washington, 1869, pp. 130-132.

^b Mining industry, U. S. Geol. Expl. 40th Par., 1870, pp. 300-308.

^c Statistics of mines and mining, etc., Washington, 1872, p. 208.

afterward he built the 5-stamp Pioneer mill, the machinery and materials for which were hauled by ox teams from Marysville, Cal. An aerial tramway was later constructed from the north workings of the Arizona mine to the mill in the canyon, several hundred feet below. Other mills were subsequently built farther down the canyon, and in 1870 there were three mills of 10 stamps each in operation. Water power was used in the first mill, but it soon became necessary to supplement this with steam. Since the principal mines were opened on different parts of a nearly horizontal vein that outcropped in an elliptical curve about a hill, litigation was inevitable, and after some controversy the Arizona and Silver companies consolidated in 1870 as the Arizona Association. The average cost of mining and milling at that time was about \$24 a ton, having not long before been lowered by the introduction of Chinese labor in the mills. Skilled miners were paid \$4 a day or \$3 a day with board. There was almost no gold in the ores, which were treated by pan amalgamation, the tailings, after standing for a time, being re-treated by the same process. The milling ore averaged about \$60 a ton, and some ore, shipped crude to San Francisco, ranged from \$500 a ton upward. One lot of 170 tons shipped in 1871 is reported by Raymond^a to have netted \$78,000, and the total ore mined in that year by the Arizona Association is given as 7,000 tons. In 1873 the output had declined to 3,915 tons, of which 81 tons of about \$330 grade was shipped to San Francisco. The mine continued to be worked until 1880, since when little has been done with it. It produced in all (including the output of the Henning or Wheeler mine, which yielded less than 5 per cent of the whole) about \$3,000,000 from approximately 80,000 tons of ore. In 1899 the property was brought by John Ross and Neal Carmichael, the present owners, who have not, however, resumed work on a commercial scale.

From 1860 nearly to 1880 Unionville, although perhaps rivaled or surpassed for a short time by Star City, was on the whole the most important town in the Humboldt region, and was the local supply point for many smaller communities in neighboring mining districts.

There was considerable activity during this period near Dun Glen (now known as Chafey), in the Sierra district. The most productive mine in the seventies appears to have been the Tallulah, 2 miles northwest of Dun Glen. Afterward the Auld Lang Syne mine became the leading one of the district. The Monroe and Auburn mines also were active.

On the west side of the Humboldt Range mining was in progress at many places during the period when Unionville flourished. Among

^a Statistics of mines and mining, etc., Washington, 1873, p. 208.

the noted silver mines on that side of the range are the Humboldt Queen and the Ryepatch. The latter, which is reported to have produced over \$1,000,000, was known before 1872 as the Butte mine. It has been idle for over twenty years.

It is to be noted that most of the mines in the Humboldt Range were opened and were worked most extensively before the completion of the Central Pacific Railroad. The great improvement in mining facilities brought about by railway communication was not sufficient to offset the diminution in tenor of the ore bodies, as they were followed below their enriched portions, and the decline in the price of silver consequent upon the demonetization of that metal.

Although the mines of the Humboldt Range have yielded far more silver than gold, placer mining was at one time an important industry, especially in American Canyon, 12 miles south of Unionville. Operations began there about 1881 and were prosecuted actively until about 1895. The placers were first worked by Americans, who are reported to have taken out gold to the value of about \$1,000,000. The ground, however, soon passed into the possession of Chinese, who formed a considerable settlement in American Canyon and mined the gravels with skill and assiduity by drifting from countless narrow shafts ranging from 40 to 85 feet deep. How much gold they obtained is unknown, but some estimates, doubtless much exaggerated, place the total at about \$10,000,000.

In Cottonwood Canyon, on the east slope of the Stillwater Range, near latitude 40°, are nickel and cobalt mines, which were opened about 1882, a car of nickel ore being shipped in that year to Camden, N. J. The Nickel mine, owned by the American Nickel Company, was worked until about 1890. It was again opened in 1904, but has been idle since 1907. A small smelter was built and a little matte, probably not over 50 tons, was produced. Attempts were made also to extract nickel salts with sulphuric acid, with what success is not known.

The Lovelock mine, a little farther up the canyon, has probably shipped about 500 tons of nickel-cobalt ore, which was hauled to Lovelock by teams returning from the Bernice silver and antimony district in the Augusta Mountains. A diminutive furnace was erected but was not successful.

The Kennedy district, also on the east side of the Stillwater Range and about 25 miles southeast of Unionville, first attracted attention in 1890. Kennedy soon became a flourishing town; mills were built and considerable work was done in the Gold Note, Imperial, and other mines. After the exhaustion of the oxidized pay shoots the amalgamating mills proved unfit for coping with the complex gold-silver-lead ores, and since 1904 the district has sunk into decay. No mining

was in progress in 1908. The total output of the district probably does not exceed \$120,000, mostly from ore of shipping grade.

The principal events of the past few years in the Humboldt region have been the opening of the Seven Troughs district in 1907 and the revival of mining in the vicinity of Dun Glen or Chafey in 1908. The Rosebud bubble, which collapsed in 1907, has merely added one more to a long list of such failures in Nevada. The various good and evil attributes on which mining "booms" depend are as a rule curiously blended or contrasted. Energy, hope, cupidity, credulity, and many other qualities all contribute to the local sentiment that applauds the "booster," no matter how extravagant his claims, and that defers the recognition of truth until the moment of disaster. The fact that a mining district is injured, not helped, by misrepresentation is forgotten by those who buy and stay, ignored by those who sell and go.

LITERATURE.

The following are the principal contributions to the geologic and mining literature on the Humboldt region:

- EMMONS, S. F. From Reese River to Osabb Valley. U. S. Geol. Expl. 40th Par., vol. 2, 1877, pp. 636-659. (Describes the general geology.)
- GABB, W. M. Paleontology, vol. 1, Geol. Survey of California, 1864, pp. 19-35. (Describes Triassic fossils from the Humboldt Range and from near Dun Glen.)
- HAGUE, ARNOLD. Fish Creek and Battle Mountains (pp. 660-672); Havillah and Pah-Ute ranges (pp. 673-712); West Humboldt region (pp. 713-750); Montezuma Range and Kawsoh Mountains (pp. 751-774). U. S. Geol. Expl. 40th Par., vol. 2, 1877. (Describes the general geology.)
- HAGUE, ARNOLD, and EMMONS, S. F. Region of the mud lakes. U. S. Geol. Expl. 40th Par., vol. 2, 1877, pp. 775-800. (Describes geology.)
- HAGUE, JAMES D. Mining and milling in western Nevada. U. S. Geol. Expl. 40th Par., vol. 3, Mining industry, 1870, pp. 296-319. (Describes the Montezuma mine in the Trinity district, the smelting works at Oreana, and the mines of the Buena Vista, Star, Sierra, Gold Run, and Battle Mountain districts.)
- HYATT, ALPHEUS, and SMITH, JAMES PERRIN. Triassic cephalopod genera of America. Prof. Paper U. S. Geol. Survey No. 40, 1905, pp. 21-23, 26, Plates XXII-XXV. (Describes the Middle and Upper Triassic faunas of the Humboldt Range.)
- KING, CLARENCE. Systematic geology, with atlas. U. S. Geol. Expl. 40th Par., Washington, 1878. (A discussion of the structure and geologic history of the whole region adjacent to the fortieth parallel from the Rocky Mountains to the Sierra Nevada.)
- LOUDERBACK, GEORGE DAVIS. Basin Range structure of the Humboldt region. Bull. Geol. Soc. America, vol. 15, 1904, pp. 289-346. (A full and valuable discussion of the general geology with special reference to the structure of the Humboldt Range.)
- MEEK, F. B. Paleontology. U. S. Geol. Expl. 40th Par., vol. 4, pt. 1, 1877, pp. 99-129, Plates X and XI. (Describes the fossil fauna of the Humboldt Range as Upper Triassic.)
- MERRIAM, JOHN C. Triassic Ichthyosauria. Memoirs of the University of California, vol. 1, No. 1, Berkeley, Cal., 1908, pp. 18-19. (Describes fossil reptilian remains from the Humboldt Range and gives references to earlier publications on the same Middle Triassic fauna.)

RAYMOND, ROSSITER W. Mineral resources of the States and Territories west of the Rocky Mountains. Washington, 1869, pp. 117-133. (Notes on the history and development of the Battle Mountain, Black Rock, Buena Vista, Central, Eldorado, Gold Run, Humboldt, Orofino, Sacramento, Sierra, Star, Trinity, and Winnemucca districts.)

— Statistics of mines and mining in the States and Territories west of the Rocky Mountains. Washington, 1870-1874. (Contains much information concerning the development and working of the mines during the period covered.)

RUSSELL, ISRAEL C. Geological history of Lake Lahontan. Mon. U. S. Geol. Survey, vol. 11, 1885. (Describes the great Quaternary lake that occupied the valleys of the Humboldt region.)

SPURR, J. E. Origin and structure of the basin ranges. Bull. Geol. Soc. America, vol. 12, 1901, pp. 217-270. (Discusses incidentally the structure of some of the ranges visited in the course of the present reconnaissance. Mr. Spurr's own field work, however, was south of the fortieth parallel.)

[WISKER, A. L.] Chafey, Nev. Min. and Sci. Press, Nov. 7, 1908, pp. 625-626. (A good brief sketch of the history of the district and of mining conditions therein during the summer of 1908.)

SEVEN TROUGHS DISTRICT.

INTRODUCTION.

The Seven Troughs district, which is about 30 miles northwest of Lovelock, a flourishing town on the main line of the Southern Pacific Railroad, lies on the east slope of a minor range designated on the Fortieth Parallel Survey map^a as the Pah-tson Mountains, but now popularly known as the Seven Troughs Mountains.^b The higher parts of the mountains are dotted with junipers and the larger ravines contain small perennial streams. Grass flourishes on some slopes and for over thirty years the region has been used as a range for sheep and cattle. The watering places maintained in connection with this pastoral occupancy have given to the new mining district its name.

The road from Lovelock runs for a few miles through the irrigated farming land of Humboldt Valley and then crosses obliquely in a northerly direction a broad and relatively low part of the Trinity Range consisting of granitic and slaty rocks partly buried under rhyolitic and basaltic flows. From the northwest base of this range the road stretches straight across the bare and nearly level expanse of the northeast arm of Sage Valley for 9 or 10 miles, to the foot of the Seven Troughs Mountains. A more unsatisfactory road material than the mixture of stones and ashy soil that floors this arid basin can hardly be imagined, and the many abandoned deep-rutted tracks show that at times no road at all is preferable to one in which the depth of the dust-filled chuck holes is a subject for anxious speculation.

^a U. S. Geol. Expl. 40th Par., atlas, Map V, west half.

^b Occasionally referred to also as the Stonehouse Range.

Supplies are hauled by teams from Lovelock. Passengers may reach the district most conveniently from the same point by the ordinary stage line or by automobiles, which meet the transcontinental trains and ply over a little better road than is used by horse-drawn vehicles.

There are four little towns in the district, three of which, Vernon, Mazuma, and Farrell, are situated at the east base of the range. Vernon, the southernmost of the three, was the chief settlement in the district early in 1908, but had lost its preeminence by August of that year, most of the activity then centering about Mazuma, $2\frac{1}{2}$ miles north-northeast of Vernon, and about Seven Troughs, which is $1\frac{1}{2}$ miles west-northwest of Mazuma, higher up the same canyon. Farrell, 3 or 4 miles north of Mazuma, has at no time been as important as the other settlements.

The ravine in which are the towns of Mazuma and Seven Troughs is known as Seven Troughs Canyon. North of it in order are Wildhorse, Burnt, and Stonehouse canyons, the latter embouching at Farrell. Victor Canyon is a short minor ravine between Burnt and Stonehouse canyons. All three of the main ravines contain water the year round, part of that from Burnt Canyon being piped to Mazuma.

It is difficult to determine when prospecting began in this district, but there is little record of any work prior to 1905, and it was not until early in 1907 that the veins began to attract other than local attention. The Mazuma Hills mine was opened in that year, and its success, with the subsequent discoveries in the Fairview and Kindergarten mines and in various leases, soon made Seven Troughs a familiar name in the mining press.

GENERAL GEOLOGY.

TOPOGRAPHY.

The Seven Troughs Mountains have a length of 24 miles and trend 20° east of north. The greatest width of the range is 8 miles. Its crest culminates in a group of three summits, which attain altitudes of about 3,000 feet above the desert plains that surround the range on all sides but the north. The highest and middle summit is Granite Peak. The one southwest of it, of schist, is designated Pahkeah Peak on the Fortieth Parallel Survey map. A low, broad pass, occupied according to this map by Miocene lake beds belonging to the Truckee formation, separates the north end of the Seven Troughs Range from the longer Trinity Range and from the Kamma Mountains, a small group within which is the Rosebud mining district and the Rabbit Hole sulphur mine.

EARLY EXPLORATION.

The Fortieth Parallel Survey map represents the Seven Troughs Mountains as consisting of a mass of Archean rocks and granite, exposed on the higher summits and over much of the west slope, but covered in the southern and eastern parts of the range by Tertiary rhyolite and subordinate overlying flows of basalt. An area of Jurassic rocks, about 5 miles long and 1 mile wide, is also shown on the east slope, just north of what is now the central part of the Seven Troughs mining district. Hague and Emmons^a state that these rocks comprise "blue limestone and shales, which, on grounds of general probability, but without paleontological or distinct stratigraphical evidence, have been referred to the Jurassic formation."

The Archean rocks are described by the same writers^b as very fine grained micaceous schists, distinctly bedded and standing at high angles. These are said to be cut by the granite, which, as Hague and Emmons point out, is of basic character, very different from the known Archean granites of the region, but closely resembling the rocks of the great intrusive masses, supposedly of post-Jurassic age, of the Sierra Nevada and of some of the prominent ranges of the western part of the Great Basin. They note also some small exposures of an older granite, probably Archean, on the west slope of the range.

The volcanic rocks are briefly described by the same explorers,^c and some of the perlitic varieties were studied and figured by Zirkel.^d Little information is given concerning the succession and structure of the lavas, and the localities particularly described are all outside of the district now being prospected.

Apparently no mining whatever was in progress in these mountains when Hague and Emmons visited them.

PRE-TERTIARY ROCKS.

The known ore deposits of the Seven Troughs Range are all in the Tertiary volcanic rocks, and consequently a small part only of the four days spent in the district could be devoted to the older formations. North of Mazuma the so-called Jurassic rocks appear first in Burnt Canyon as a northeast-southwest belt of indurated clay slate about half a mile wide. This belt appears to correspond at this place to a low ridge, which, after having been completely buried under lava flows, has been uncovered again by erosion. The slate extends northeast and forms the rounded foothills just west of Farrell. It was found to be exposed westward along Stonehouse Canyon nearly to its head, and the belt is thus two or three times as wide as is shown by

^a U. S. Geol. Expl. 40th Par., vol. 2, 1877, p. 782.

^b Op. cit., p. 776.

^c Op. cit., pp. 779-786.

^d U. S. Geol. Expl. 40th Par., vol. 6, 1876, pp. 208-209, Pls. VII, 2; IX, 2 and 3; and XII, 2.

Hague and Emmons, who evidently did not traverse this ravine and, naturally enough, mapped only the rhyolitic rocks visible on the ridges. At the old stone cabin from which the canyon gets its name, a mile or two west of Farrell, the slate is well exposed and dips about 40° E., bedding and cleavage being parallel. Farther up the canyon the dip varies and the slate is cut by dikes of a light-colored rock, presumably rhyolite. Near the head of the ravine the slate is intruded and metamorphosed by the "younger granite," described by Hague and Emmons. This metamorphosed material was mapped as Archean by these observers, and since the main mass of supposed Archean west of Pahkeah Peak consists, according to their description, of bedded slaty schists, there is a suggestion that these also may be metamorphosed post-Archean sediments. There was no opportunity in 1908 to investigate this problem; in fact, not having the Fortieth Parallel Survey map at hand, I was unaware, while in the field, that it had arisen.

The intrusive granitic rock at the head of Stonehouse Canyon is a fresh, medium-granular, rather dark gray rock, which evidently is not very quartzose and contains a large proportion of plagioclase. Only one specimen was collected and the mass undoubtedly contains other varieties than the one here described. The microscope shows the rock to be a granodiorite, of which the constituents are a plagioclase near andesine, orthoclase, microcline, quartz, hornblende, biotite, apatite, and magnetite. The plagioclase is a little more abundant than the alkalic feldspars.

The rock from the summit of Granite Peak was analyzed by Prof. Thomas M. Drown as follows:

Chemical analysis of granodiorite from Granite Peak.^a

SiO ₂	64.02
Al ₂ O ₃	17.60
FeO.....	4.03
MgO.....	1.27
CaO.....	4.38
Na ₂ O.....	4.79
K ₂ O.....	2.62
Loss on ignition.....	.80
MnO.....	.16
	99.67

This specimen is said by Hague and Emmons to be typical of the mass, and their suggestion of its similarity to the granodiorite of the Sierra Nevada has been fully borne out by later work in that range.

^a U. S. Geol. Expl. 40th Par., vol. 2, 1877, p. 779.

TERTIARY VOLCANIC ROCKS.

The prevailing rock of the low, rounded hills on the edge of the Sage Valley at Mazuma and for a mile or more up Seven Troughs Canyon is a pale reddish-brown lava, much of which shows conspicuous flow lamination and a platy fracture. Some varieties are light gray, of compact lithoidal texture, and contain minute phenocrysts of feldspar and biotite; other kinds are brittle perlitic glasses. Although the rock is not visibly quartzose, its general appearance is so rhyolitic that little doubt of its siliceous character arose in the field, especially since it was mapped as rhyolite by the geologists of the Fortieth Parallel Survey. The microscope shows, however, that neither quartz nor orthoclase is present in identifiable crystals, but that phenocrysts of labradorite and biotite lie in a very glassy groundmass containing plagioclase microlites. Some ill-defined aggregates of magnetite suggest the former presence of small phenocrysts of hornblende that have undergone magmatic resorption. The rock accordingly is not a rhyolite but, pending chemical analysis, must provisionally be classed as a mica andesite, unusually poor in feric constituents. Much of it is a mica andesite vitrophyre.

Associated with the mica andesite, which appears to occur in several thin flows, is at least one flow of vesicular basalt, some of which is exposed on the slope just north of the west end of Mazuma.

The mica andesite, with a general dip to the east, is the principal rock of the ridges on both sides of the road from Mazuma westward to Seven Troughs. Here the canyon expands into a little amphitheater formed by two short lateral ravines that open north and south on the main east-west gorge. The northern and longer ravine heads in a saddle, through which passes the trail from Seven Troughs to Wildhorse Canyon. The southern ravine, which is much shorter and steeper, rises to a higher saddle, through which goes the trail to the Fairview mine and to Vernon. The length of the amphitheater is about a mile and its width about one-fourth mile. Structurally it appears to correspond to a sharp north-south anticline, along which the mica andesite has been eroded, exposing older and generally softer rocks beneath it. Consequently the andesite in general rims the basin and the other rocks occupy its lower part.

Directly under the vitrophyric andesite there is, as a rule, a flow of basalt. The thickness of this is not known but appears to vary greatly. Much of it is vesicular, and transitions from compact to vesicular varieties are in some places abrupt. Some parts of the flow are a brittle glass and must have been very quickly cooled. Under this basalt and occupying the bottom of the Seven Troughs amphitheater is a volcanic complex of rhyolite, basalt, mica andesite, tuffs, arkosic sandstones, and possibly other rocks of which the structural

relations are as yet very imperfectly known and probably can be ascertained only by careful mapping and detailed microscopic work. The oldest rocks appear to be glassy tuffs, in part rhyolitic and in part basaltic, and arkosic grits. Interbedded with these is at least one flow of glassy amygdaloidal basalt. These are cut by dikes of compact basalt and of a light-colored rock which is apparently the equivalent of the mica andesite flows already described. One dike of this rock extends from Seven Troughs northward nearly to the saddle opening into Wildhorse Canyon and forms a little ridge east of the principal mines north of town. In places it is from 200 to 300 yards wide. Near Seven Troughs it contains masses of obsidian or glass, which suggest that this part of the dike must have cooled very near the surface. Farther north it has a rude columnar structure, the columns lying horizontally across the dike. It must be said that the identification of the mass as a dike rests almost wholly upon its general form and position. The possibility of its being a down-faulted strip from the mica andesite flows has not been eliminated.

The tuffs and arkosic sediments are very poorly exposed, and a few mine workings, as yet shallow, are the only places where anything can be learned of their attitude and structure. In some of these the beds are nearly horizontal; in others they are tilted up to 45° , the dip in the few openings where it could be observed according generally with the anticlinal structure of the district. In the mines changes from tuff to basalt or rhyolite are common and often perplexing. This is due partly to the fact that the basalt occurs both as flows and as irregular intrusions, partly to the local and variable character of the different formations, and partly to faulting.

Associated with the basalt and tuffaceous deposits are masses of a light-yellowish rhyolite, which in the field, prior to petrographic study, was not readily distinguished from the younger mica andesite, then thought to be also a rhyolite. It was supposed at the time of visit that the yellowish rhyolite might be a lower, slightly altered part of the series of flows now known to be andesitic. It proves, however, to be a distinct and older rock. Whether it is extrusive and rests generally on the tuffs or is intrusive into them is not yet known. It is exposed in the bottom of Seven Troughs Canyon, just west of the town, where it is apparently separated from the mica andesite by a basalt flow. The rock is compact and contains numerous small phenocrysts of quartz, orthoclase (sanidine), and biotite. The microscope shows also a few phenocrysts of plagioclase. The groundmass is partly devitrified microlitic glass.

In general it must be said that in detail the structure of the district is obscure and complex; it will require much more than a reconnaissance examination for its satisfactory interpretation.

The Fortieth Parallel Survey map shows that a considerable part of the range in the vicinity of Aloha Peak, south of Seven Troughs, is covered by basalt. Dark scarps, presumably of this rock, are visible along the crest of the range from near Vernon, and boulders of hard vesicular basalt are abundant in the wash near that town. This flow is probably younger than any of the rocks exposed near the mines.

DISTRIBUTION AND DEVELOPMENT OF THE MINES.

The most important group of mines is at Seven Troughs. Just southeast of the town, which lies on the south bank of the arroyo running down to Mazuma, are the Kindergarten and Wihuja mines, both on the same vein. The Kindergarten mine, owned by the Seven Troughs Kindergarten Mining Company, is developed by a tunnel and by an inclined shaft 280 feet deep on the dip. A new vertical shaft, being sunk at the time of visit in August, 1908, was expected to cut the vein at a depth of about 300 feet. The Wihuja is a lease on the ground of the Seven Troughs Therien Gold Mining Company, and is opened by an inclined shaft to a vertical depth of about 212 feet. The Kindergarten and Wihuja workings are connected. Other leases on Therien ground, in operation but not productive in 1908, were the Bard and Jess (175 feet deep), the Tyler, and the Sandifer leases.

On the north side of the canyon, close to town, are the Mazuma Hills and Reagan mines, both productive. The Mazuma Hills mine is owned and operated by the Mazuma Hills Mining Company; the Reagan is a lease on a vein lying east of the Mazuma Hills vein, but within the ground of that company.

The Mazuma Hills mine is opened by a main adit 700 feet long. Winzes from this adit connect with a level 100 feet below and about 500 feet long. There is also an upper disused adit about 100 feet above the main level. The Reagan is worked through a shaft that was 165 feet deep at the time of visit. Only the 65-foot level, however, could then be examined, the bottom level being temporarily under water, pending the installation of pumps.

South of the Mazuma Hills and Reagan mines is the Sandifer lease on Therien ground. Here, in the bottom of the canyon, a shaft is being sunk in expectation of finding ore in the southern parts of the Mazuma Hills and Reagan veins.

North of the Reagan shaft, on the same fissure zone, are the Chadbourne and Bradley leases, whose shafts are respectively 135 and 165 feet deep. Neither had been productive up to August, 1908. On the hillside a short distance above and north of the Mazuma Hills tunnels is the shaft of the Hayes-Mazuma lease. This was being sunk through rhyolite at the time of visit and was not in ore.

Between the workings mentioned and the head of the ravine north of Seven Troughs are the Eclipse shaft, Providence tunnel, and various smaller unproductive openings made by lessees and prospectors. On the north side of Seven Troughs Canyon, about a quarter of a mile below the town, is the tunnel of the Seven Troughs Tomboy Mining Company. This is a crosscut running N. 50° E. At the time of visit it was 800 feet long, and the intention of the company was to carry it 400 feet farther. The tunnel first penetrates about 150 feet of rhyolite and then goes through a seam of gouge into soft pyritized tuffaceous beds with a general low dip to the northeast. These are cut by many faults, probably of small throw, and contain some masses of basalt. About 350 feet from the portal the tunnel goes through another seam of gouge into rhyolitic (or possibly andesitic) breccia cut by dikes of glass or obsidian. Lower down the canyon, near Mazuma, considerable tunneling has been done on the Badger group of claims. These workings were not examined.

In Wildhorse Canyon prospecting was in progress in 1908 on the Wild Bull, North Pole, and other claims. The Wild Bull showed a little ore, but no shipments had been made.

North of this canyon the only active prospecting appeared to be on the Snow Squall claim in Victor Canyon, south of Farrell. It was reported that lessees had found good ore in sinking their shaft, but the workings were not visited.

From the saddle south of Seven Troughs a long ravine runs south and then turns southeast, embouching at Vernon. In the upper part of this ravine is the Dixie Queen shaft 230 feet deep and the Cleghorn Consolidated and Signal tunnels from 200 to 300 feet in length. Some lessees also were operating in 1908 on property of the Signal Peak Mining Company, high up on the ridge south of Seven Troughs, but owing to lack of time their shaft was not visited. About halfway down the canyon and about 2 miles south of Seven Troughs is the Fairview mine, reported at the time of visit to be 650 feet deep. This mine is known to have had some bunches of very rich ore in the upper levels and is said to have shipped about \$65,000. No stoping was in progress at the time of visit and the shaft was being carried down through hard basalt. The mine is owned by practically the same people that control the Kindergarten and Therien properties at Seven Troughs. In contrast to the attitude of other mine owners in the district they showed disinclination to impart information and refused access to the Fairview mine.

Adjoining the Fairview workings on the north is the Harris lease, on Fairview ground, with a shaft 185 feet deep. The dump is basalt, much of it being vesicular.

There were two mills in operation in the latter part of 1908, one belonging to the Kindergarten company and situated at Seven

Troughs, the other belonging to the Mazuma Hills company and situated at Mazuma. Both are 10-stamp mills with amalgamating plates, Wilfleys, and vanners. No attempt is made to cyanide the tailings or save them.

CHARACTER OF THE DEPOSITS.

Most of the dikes and fissures near Seven Troughs have a nearly north-south trend. The veins as a whole consist of soft, crushed material and do not outcrop above the surface. They represent zones of brecciation or of small fissures, along which movement has continued since the spaces originally formed were filled with quartz. Consequently the typical quartz of the district is friable or sugary, and generally contains or is mingled with many fragments of shattered rock. Clear solid masses of quartz, even of small size, are rare. The veins on the whole are rather narrow, ranging from a few inches up to about 2 feet in width. It is possible, however, that the average working width may be considerably increased when the district has better facilities for handling and treating ore.

The valuable constituent of the lodes is native gold containing a considerable proportion of silver, and consequently of a rather pale color. In most of the rich ore the gold is visible either as clusters of small irregular particles or as coarse crystalline aggregates. No complete well-formed crystals were seen, but there is a noticeable tendency of the coarser gold to form crystal facets. The Mazuma Hills, Reagan, and Fairview mines have afforded some very showy specimens of bright yellow gold interlaminated with firm quartz or enveloping fragments of altered country rock. Loose nugget-like masses up to an ounce in weight have been found in soft crushed vein matter in the Reagan lease. The rich bunches of gold are not uniformly distributed through the veins, and it is difficult in some cases to secure clean sorting. It was found, for example, that material thrown over the Reagan dump as waste or as low-grade ore to be treated later carried small quartz stringers, and that some of these, when broken across, contained coarse native gold.

The tenor of the ores, as is to be expected, has a wide range. A mill run from the Reagan lease in August, 1908, averaged about \$130 a ton. Picked ore from the Fairview, Mazuma Hills, and Reagan mines has yielded at the rate of several thousand dollars a ton. In the Kindergarten mine the ratio of gold to silver by weight is said to vary from 1:2 to 1:3 near the surface, but at the bottom of the mine to be nearly 1:1. Assay certificates of rich ore from the Reagan lease, seen in Seven Troughs, showed a ratio of nearly 2 of gold to 1 of silver. At one place on the lower level of the Mazuma Hills mine quartz carrying a little chalcopryite is reported to have yielded on assay 200 ounces of silver and 0.3 ounce of gold to the ton.

The three important veins near Seven Troughs are the Mazuma Hills, Reagan, and Kindergarten veins. The first two, known only on the north side of the canyon, strike about N. 10° E. and dip from 60° to 65° W. The Reagan vein lies about 40 feet east of the Mazuma Hills vein. The Kindergarten vein, on the south side of the canyon, strikes N. 63° E. and dips south. The dip varies from 60° near the surface to 22° on some parts of the 40-foot level. The dip at the bottom level is about 35° (vertical depth 212 feet). The stope length of the ore shoot is about 130 feet, and the average workable width of ore is probably about 2 feet. At the northeast end of the mine the vein appears to be cut off by a zone of north-south fissures in which no ore had been found at the time of visit.

The country rock varies from place to place in each mine. The Kindergarten and Wihuja workings, as seen in 1908, are mainly in basalt. Part of this is a soft, altered amygdaloidal variety, evidently an extrusive rock. Other parts are a dense, olivinitic variety that apparently cuts the amygdaloidal flow rock. Masses of soft, light-colored rock, either rhyolite or mica andesite, but too decomposed as a rule for satisfactory determination, occur at unexpected places on both sides of the vein. They probably represent intrusions more or less displaced by faulting.

The Mazuma Hills vein follows a basalt dike that varies in width from a fraction of an inch to more than 6 feet. The general country rock is a nearly white altered rock that the microscope shows to have been originally a highly glassy rhyolitic tuff or flow breccia. It is now devitrified into a fine-grained, obscurely crystalline aggregate and contains minute disseminated crystals of pyrite. The best ore is on the foot wall or east side of the dike, and appears to be for the most part minutely fissured and silicified rhyolite tuff; but some ore extends into the basalt. At one place there is a second vein, about 10 feet east of the main fissure zone and with a little lower dip. The horse of rhyolite tuff between the two is said to be all low-grade ore. Some of the best ore in the mine is reported to occur as small gold-bearing stringers traversing hard rhyolitic tuff.

The Reagan vein also follows a basaltic dike and shows considerable resemblance to the Mazuma Hills vein. The general country rock, however, is more varied. Much of it is a highly-altered volcanic glass, apparently basaltic, which owing to its originally brittle character, has been elaborately and minutely cracked and fissured. Many of the cracks are microscopic and have a perlitic arrangement. This rock is generally greenish gray, and much of it is so fine grained that its mineralogical character can not be ascertained under the microscope. Other varieties show a few microscopic phenocrysts of plagioclase, partly altered to calcite, and a groundmass in which traces of an original microlitic texture can be detected. Much of the rich ore

of the Reagan lease consists of this altered basaltic glass, in which the irregular cracks have been filled with quartz carrying free gold. The secondary minerals identified in the glass itself are pyrite, quartz, calcite, and apparently a little chlorite. Calcite is not abundant, which is rather surprising in view of the calcic composition of basalt. In some places altered glass of the kind described passes into a highly amygdaloidal variety that is well exposed in a tunnel on the Sandifer lease just south of the Reagan mine and in the Bradley lease to the north. In the Sandifer lease the vesicles are only partly filled by clear projecting crystals of quartz. In the Bradley lease some are filled with quartz and some with calcite. Pyrite is disseminated through the light greenish gray altered substance of both varieties, and a few vesicles were noted that were first lined with pyrite and then filled with quartz. Although pyrite is fairly abundant throughout the altered basaltic and tuffaceous rocks near the ores, and occurs with quartz in very small, almost microscopic veinlets, it appears to be rare in the generally larger veinlets in which are the visible particles of gold. These veinlets, so far as could be seen in 1908, contain little or no pyrite. According to Mr. D. H. Skea,^a some proustite and possibly some stephanite or polybasite were found with the gold in the Fairview mine, and a little chalcopyrite and specks of a gray mineral resembling bornite were noted in 1908 on the bottom level of the Mazuma Hills mine in quartz similar to that elsewhere rich in gold; but as a rule the auriferous quartz is notably free from any other mineral than gold. Stibnite occurs in friable lenticular masses of considerable size in soft crushed basalt in the Chadbourne lease, and is said to have been found also in the Reagan lease. It does not, however, appear to have any intimate connection with rich ore. A little native silver is said to have been panned from the ore of the Wild Bull mine in Wildhorse Canyon.

All of the ore visible in 1908 was within the range of oxidation. The results of weathering, however, owing to the very small quantity of pyrite in the veinlets, are not conspicuous, and there appears to be no very definite change from oxidized to sulphide ores. Pyrite and stibnite, as has been seen, both occur in connection with the ore deposits above the ground-water level. The surface of the underground water near Seven Troughs corresponds approximately to the bottom of the canyon, in which is some running water, and doubtless rises a little higher in the adjacent ridges. In August, 1908, water was just making its appearance in the bottom of the Kindergarten mine at a depth of 212 feet, and the lessees of the Reagan, 165 feet deep, were putting in a pump in order to work their lower level.

^a Oral communication.

OUTLOOK FOR THE DISTRICT.

Not enough mining or geologic work has been done to enable anyone to pass final judgment on the future of the Seven Troughs district. The presence of very rich, easily treated gold-silver ore in fair abundance at several places within an area some 6 miles in length is highly encouraging. On the other hand, it should be noted that the veins are not of great size and apparently are not as a rule of great length or persistence, and their character at any considerable depth below possible superficial enrichment is yet undetermined. Moreover, it is evident that in most of the mines the country rock may be expected to differ at various depths, and it is yet to be proved that the rocks beneath the tuffs and basalt in which most of the known ore occurs will be equally productive. In short, while the district is a most promising one for prospecting and developing, it is yet too early to regard it as one certain to yield largely for a period of many years.

ROSEBUD DISTRICT.

SITUATION AND HISTORY.

The Rosebud district is situated in the Kamma Mountains, a minor crescentic ridge lying north of the Seven Troughs Mountains and fronting with its concave northwest side the forbidding expanse of the Black Rock Desert. The main summits rise from 2,000 to 3,000 feet above the desert. Like the Seven Troughs Mountains, the group is merely a part of the Trinity Range. The town of Rosebud, close to which the mines are situated, is about 28 miles northwest of Humboldt House, a station on the main line of the Southern Pacific Railroad, and about 35 miles from Mill City. There is a stage from Humboldt House about once a week, but in September, 1908, no attempt was being made to maintain a regular schedule.

The Kamma Mountains have long been known as a source of sulphur, the Rabbit Hole sulphur mine having been worked since 1874. This deposit, which has been described by G. I. Adams,^a is about 5 miles north-northeast of Rosebud and was not visited in the course of the present reconnaissance.

Silver ore appears to have been first discovered near the site of Rosebud in 1906. This was followed by a senseless "boom," in which, as usual, folly played eagerly into the hands of fraud. Consequently, the town, which sprang up before the existence of any considerable body of ore was assured, is now nearly deserted, and the winds whistle through the unglazed windows of its most pretentious buildings, abandoned before completion.

^a The Rabbit Hole sulphur mines near Humboldt House, Nevada: Bull. U. S. Geol. Survey No. 225, 1904, pp. 497-500.

A year or two ago the Brown Palace mine shipped from 15 to 20 tons of ore from an open cut about 10 feet deep. This, so far as is known, represents the total output of the district up to the end of 1908. Some prospecting and development were in progress in September of that year, and it is possible that with the opening of the Western Pacific Railroad, which passes a few miles north of Rosebud, the district may ultimately prove of some importance.

GENERAL GEOLOGY.

According to the Fortieth Parallel Survey map, the oldest rocks in the Kamma Mountains are Triassic and are exposed in the southwest part of the range, associated with a little dacite and diorite. About Lander Spring, on the east side of the range, is shown an area of Jurassic rocks overlain to the west by rhyolite and andesite that are probably Tertiary. The supposed Jurassic slates are the prevailing rocks seen on the road from Humboldt House to Rosebud, which crosses the Trinity Range north of Antelope Peak, by way of Willow Spring. The veins worked at Rosebud are all in the rhyolite, which occurs as laminated flows and flow breccias. These rocks form rounded hills, rising about 1,500 feet above the town. The rhyolite is not conspicuously porphyritic and as a rule is very fine grained. Most of it represents an originally glassy rock that has undergone devitrification and locally a good deal of secondary alteration—chiefly silicification, with the development of some sericite, kaolin, and pyrite.

ORE DEPOSITS.

The principal zone of mineralization lies about half a mile north of Rosebud and strikes nearly east and west. At the west end of the zone is the White Alps property, on which some lessees have an inclined shaft 130 feet deep on a belt of fissuring and alteration that dips 70° N. There is very little vein quartz, and that merely in the form of small irregular stringers. The mineralized material is a white, much-altered rhyolite containing abundant finely disseminated pyrite which here and there gathers into small bunches. The individual crystals are as a rule almost microscopic. The soft white material into which the rock is largely altered and in which the pyrite is embedded is kaöinite. The deposit appears to have no definite walls and is generally of low grade. A little \$50 ore has been found near the surface.

East of the White Alps, on the same general zone of fissuring and alteration, is the Brown Palace mine. Here two tunnels, one 300 feet and the other about 500 feet long, have been run into the hill on opposite sides of a small spur. No ore has been found in them. Higher up the hill is a small open cut on the fissure zone, whence was obtained

the only ore shipped from the district. This occurred as a mass of 15 to 20 tons, in which the valuable constituent was massive argentite associated with kaolin, limonite, yellow pulverulent jarosite, and more or less oxidized rhyolitic material. This ore was found at a place where a little north-south fissure with a low dip to the west joined the main fissure zone on its south side. The ore rested on the foot wall of the minor fissure and did not extend over 10 feet from the surface.

East of the Brown Palace ground is the Dreamland, with a 100-foot vertical shaft and short drifts on two levels. The vein strikes N. 70° E. and is about vertical. It consists of hard, dull-white cryptocrystalline quartz in pyritized rhyolitic flow breccia. Its maximum width is 1 foot, but it is irregular, splits at some places into stringers, and apparently is not very persistent. The quartz contains more or less disseminated argentite, and a little ore has been sorted and saved for shipment.

There are a few other prospects in the district at which work was in progress at one time or another in 1908, including the Golden Anchor east of the Dreamland. These, however, were not examined.

Although the rocks of the Rosebud district have evidently been subjected to the action of solutions similar to those that elsewhere have produced important deposits of the precious metals, it is not yet apparent that any large or persistent veins have here been formed. The little ore thus far discovered is so near the surface and is of such a character that it can not be regarded as indicating deep and important ore bodies, although the possible existence of these is not denied.

RED BUTTE DISTRICT.

SITUATION AND HISTORY.

The small settlement of Red Butte, which consisted in September, 1908, of about 30 tents, is situated 45 miles north-northwest of Humboldt House, 55 miles a little north of west from Winnemucca, and 30 miles north of Rosebud. It lies near the south end and on the west slope of a rugged ridge, locally known as the Jackson Range, but really connected by a broad belt of lower hills with the Trinity Range to the south. There is no regular stage to Red Butte, but the district may be reached by hired conveyance from Humboldt House or Mill City. The camp is attractively situated close to a flowing spring, on a gentle slope backed by the dark, partly wooded peaks of the Jackson Range and fronting westward on the vast gleaming expanse of the Black Rock Desert, broken here and there by lonely buttes whose strange and sharply carved forms glow with the ethereal colors of a desert landscape.

The Red Butte district was opened by Mr. A. D. Ramel in May, 1907, his first prospecting being for gold on the Redeemer claim about a mile north of the present settlement. Since then work has been directed mainly to the exploration of the various copper deposits presently to be described. No ore has been shipped, and underground exploration at the time of visit was confined to openings of a very superficial character made for the most part by the original locators of the claims. The quiet prospecting here in progress is very different from the methods that gave notoriety to Rosebud.

GENERAL GEOLOGY.

For over 15 miles north of Humboldt House the road keeps to the middle of a wide, deeply filled desert valley. It then turns northward and crosses obliquely a broad, low part of the Trinity Range composed principally of dark slates mapped as Jurassic by the geologists of the Fortieth Parallel Survey ^a from their lithologic resemblance to the Mariposa slate of California and to slates overlying Jurassic limestone in the Humboldt Range. The grade for the Western Pacific Railroad has now been carried through these hills, and the slates have been well exposed in numerous deep cuts, which, however, there was no opportunity to examine on this trip.

From these slate hills the ragged pinnacles of the Jackson Range, which appear to rise 2,000 to 3,000 feet above Black Rock Desert, are conspicuous to the north. They are composed, so far as could be judged from an examination of their lower slopes and from material brought down by streams, of a hornblendic and hypersthentic gabbro, which also is the prevailing rock of the Red Butte district. The gabbro and related igneous rocks are probably intrusive into the slates, but no exposure of the contact was seen in the few hours spent in the district. Some stratified rock, reported to be limestone, is visible from the camp in a subordinate ridge along the edge of Black Rock Desert, a few miles to the northwest.

The most abundant gabbroitic rock near Red Butte is dark gray, medium grained, and evidently rich in hornblende. The microscope shows it to consist of a hypidiomorphic-granular aggregate of labradorite, hornblende, augite, quartz, magnetite, and apatite. The hornblende appears to be in part primary, but in part also it has been derived from the augite. Most of the quartz is an original constituent, and fills angular interstices between the feldspar crystals. This rock as a rule is more or less altered and contains quartz, sericite, chlorite, and a little epidote derived from the other minerals. A more coarsely crystalline variety of lighter color was noted about 1 mile north of the camp. This contains crystals (poikilitic anhedrons)

^a Described in vol. 2, 1877, pp. 755-756.

of hornblende up to 2 centimeters in length. Under the microscope the rock is seen to be composed of calcic labradorite, augite, hypersthene, biotite, quartz, and much hornblende. The last is in part sharply intergrown with the pyroxenes, but a considerable proportion of it appears to have been formed by the alteration of the colorless augite.

Detailed petrographic study would doubtless reveal other varieties of basic igneous rocks, but for the purposes of this reconnaissance the general country rock of the district is designated with sufficient accuracy as gabbro.

Cutting the gabbro are numerous dikes of a light-gray to pink aplitic rock that contains practically no dark or femic constituents. These dikes vary greatly in size and trend, and some of them are very irregular, as may be seen on Anaconda Ridge just southwest of the settlement. The contacts between the dikes and the gabbro, as exposed on this ridge, are close and distinct, but careful inspection shows that between the two rocks there is generally a gradational zone, less than an inch in width. Along some of the larger dikes the zone is wider, and this suggested at first glance that the dikes were merely belts of alteration in the gabbro. The dikes probably were injected while the gabbro mass was still at a high temperature, so that instead of a rapid chilling of the dike magma at its bounding walls there was a slight interpenetration and mixture of dike material and gabbro. This feature is not uncommon where granitic rocks are cut by the aplitic dikes characteristically associated with siliceous plutonic intrusives.

Microscopical study shows the pinkish dike rock to consist of alkalic feldspars with some sodic oligoclase and considerable interstitial quartz. In some varieties the quartz and feldspar are intergrown as micropegmatite. Most of the alkalic feldspars are twinned repeatedly and irregularly according to the albite and pericline laws, and are intergrowths of both the albite and orthoclase molecules. Specific determination of them was not attempted.

A considerable part of Anaconda Ridge, about 2 miles southwest of Red Butte camp, is composed of a compact, minutely porphyritic, dark-gray rock, which the microscope shows to be a slightly altered andesite. Presumably this rests on or is intruded by the gabbro; but its structural relations were not ascertained. Some basaltic rocks also were noted along the road a few miles south of the camp, between the gabbro and the slates, but they were not closely examined. One kind of these is remarkable for the large size of the plagioclase phenocrysts, which are tabular parallel to the brachypinacoid and up to $1\frac{1}{2}$ inches (4 centimeters) in length.

COPPER DEPOSITS.

The copper deposits at Red Butte are closely associated with the aplitic dikes. A few only of the more important prospects could be examined. At the Copper Queen and Metallic groups of claims, about $1\frac{1}{2}$ miles southeast of the camp, a short tunnel and a few shallow pits have been opened on some bunches of oxidized ore containing cuprite, covellite, native copper, and chrysocolla, associated with hematite, limonite, and a little barite. The ore is rather irregularly distributed through a fine-grained aplitic dike, which in part is altered to a rusty jaspery material. Not enough work has been done to reveal the extent and trend of the ore. The general course of the dike with which it is associated appears to be nearly northwest and southeast. Whether the ore occurs throughout the dike or is confined to its sides, near the gabbro, was not clear from the exposures available at the time of visit. The openings also gave no clue to the original mineralogical character of the ore before its oxidation.

The Anaconda prospect, situated on the ridge of the same name, about a mile southwest of the camp and 400 to 500 feet higher, was being developed at the time of visit by open cuts. The workings are entirely within a broad north-south aplitic dike, which cuts fairly coarse gabbro. The valuable constituent here is native copper, which occurs along narrow seams and joints in the dike rock and is to some extent disseminated through it. Work had just begun and the extent of the ore body had not been ascertained. The rock in which the native copper occurs is not much altered and no quartz or other vein material is present.

At the Redeemer claim, about a mile north of the settlement, a fissure zone in the gabbro carries streaks of chalcocite partly altered to chrysocolla, malachite, and azurite.

Not enough prospecting has yet been done to determine the importance of the district as a source of copper. The superficial aspect of the deposits does not, however, suggest great size or richness.

Another belt of mineralization, not visited, is said to skirt the east base of the Jackson Range and to carry copper and antimony. At one place, a few miles southeast of Red Butte, some work was in progress at an antimony prospect in September, 1908, and it was reported that a shipment of partly oxidized stibnite would soon be made. Cinnabar also occurs a few miles southwest of Red Butte, west of the road to Rosebud. The deposit has been very little developed and was not examined by me.

HUMBOLDT RANGE.

GENERAL GEOLOGY.

The Humboldt Range (see Pl. I) has a total length of about 75 miles and attains a maximum altitude, in Star Peak, of nearly 10,000 feet. As all who have written about the range have recognized, it is divisible into two distinct parts, separated by a fault the position of which is marked by a low transverse pass known as Cole Canyon. The northern division, called by Louderback^a the Star Peak Range, trends north and south and is about 32 miles long. The southern part, called by the same writer the Humboldt Lake Range, trends north-northeast and south-southwest and is over 40 miles long. The course of Cole Canyon is north-northwest.

According to Hague^b the Humboldt Range consists of an Archean nucleus upon which rest Triassic strata of great aggregate thickness. These are overlain by Jurassic beds. There are also, on the lower slope, considerable masses of Tertiary rhyolite and basalt and a few rather small exposures of Miocene beds belonging to the Truckee formation.

When it is remembered that the geologists of the Fortieth Parallel Survey mapped an enormous area, that many of their lithologic determinations necessarily depended upon the color and erosional forms of rocks as seen from some commanding point of view, that their geologic field work was done before the topographic maps were available, and that the science of microscopical petrography was then in its infancy, no surprise need be felt that many and important changes must be made in their mapping by those who follow in their footsteps. Louderback^c has shown that the so-called Archean nucleus, exposed in Rocky Canyon, southeast of Ryepatch, consists of a mass of post-Triassic intrusive granite with associated contact-metamorphic rocks. The intrusion, as Louderback observes, probably took place during the period of post-Jurassic deformation that affected the Great Basin region and the Sierra Nevada.

The Triassic rocks were divided by Hague into two formations. The upper or Star Peak formation is described as consisting of the following, numbered from the base up:

Tabular section of the Star Peak formation compiled from the description by Arnold Hague.

	Feet.
5. Quartzite and overlying limestone.....	4,000-5,000
4. Massive limestone.....	1,800-2,000
3. Black arenaceous slates.....	200- 300
2. Slaty quartzites alternating with greenish schistose rocks.	1, 500
1. Limestones. Dark, almost black at the base, passing up into gray and blue varieties.....	1,200-1,500

^a Basin range structure of the Humboldt region: Bull. Geol. Soc. America, vol. 15, 1904, p. 294.

^b Descriptive geology, U. S. Geol. Expl. 40th Par., vol. 2, 1877, p. 714.

^c Louderback, G. D., Basin structure of the Humboldt region: Bull. Geol. Soc. America, vol. 15, 1904, p. 318.

The total thickness is roughly estimated by Hague at 10,000 feet.

The Star Peak formation is noted for its abundant Middle Triassic vertebrate and invertebrate fossils, which have been described by Gabb,^a Meek,^b Hyatt and Smith,^c and J. C. Merriam.^d The stratigraphic section, however, is much in need of detailed study. Less hurried work will, I believe, make considerable changes in the sequence and lithology as interpreted by Hague and is likely to show some duplication of units in his section. Hyatt and Smith^e state that the Upper Triassic is also represented in the Humboldt Range and list half a dozen fossils. The beds containing them are said to be unconformably overlain by limestone containing Jurassic forms.

The lower division of the Triassic was called by Hague^f the Koipato formation, from the Indian name of the Humboldt Range. It is described as a series of quartzites and "porphyroids," with a total thickness roughly estimated at 6,000 feet. The "porphyroids," although recognized as closely resembling eruptive rocks, were regarded by Hague as "metamorphic products of the mixed quartz and feldspar rocks of the series of beds underlying the limestone of the Star Peak Triassic."

In the light of modern petrographic knowledge, Hague's descriptions and the accompanying chemical analyses of the "porphyroids" strongly suggest that they are not metamorphosed sediments, but are for the most part eruptive rocks. The exigencies of a hasty reconnaissance did not permit a thorough examination of the Koipato formation in 1908. Enough of it was seen, however, to leave no doubt of its dominantly igneous character. It consists of volcanic flows, mostly rhyolitic but including also andesitic lavas, associated with tuffs, conglomerates, grits, and limestones. The "porphyroids" are for the most part true igneous porphyries, although some of the tuffs may also have been included under this designation. As is to be expected in pre-Tertiary lavas that have been subjected to considerable deformation, the originally more or less glassy rocks are devitrified and altered, in some places even to being rendered rudely schistose. The extrusive and tuffaceous rocks are cut by rhyolitic and dioritic dikes that are also of early Mesozoic age, and the Koipato formation as a whole is a volcanic complex, of which nonvolcanic sediments, including limestones, form a subordinate part. No true quartzite was observed in the Koipato in the course of this reconnaissance.

^a Paleontology, vol. 1, Geol. Survey California, 1864, pp. 19-35.

^b Paleontology, U. S. Geol. Expl. 40th Par., vol. 4, pt. 1, 1877, pp. 99-129, Pls. X and XI.

^c Triassic cephalopod genera of America: Prof. Paper U. S. Geol. Survey No. 40, 1905, pp. 21-23, Pls. XXII-XXV.

^d Triassic Ichthyosauria: Mem. Univ. California, vol. 1, No. 1, Berkeley, Cal., 1908, pp. 18-19.

^e Triassic cephalopod genera of America: Prof. Paper U. S. Geol. Survey No. 40, 1905, p. 26.

^f Op. cit., p. 716.

Hague calls attention to the fact that the division of the Star Peak formation that I have numbered 2 on page 31 is very similar to the Koipato formation. An examination of these rocks near the Sheba mine, in Star Canyon, shows that they comprise andesitic and rhyolitic flows and tuffs, with some beds of tuffaceous grit and of limestone. All are altered and are slightly schistose parallel with the bedding planes. Were it not that these rocks appear to be underlain by a considerable thickness of black shaly limestone they would naturally be grouped with the Koipato. As it is, their stratigraphic position is a little doubtful. The plane of division between the Koipato and Star Peak formations is much in need of close study and accurate definition.

The structure of the Humboldt Lake Range has been carefully studied by Louderback,^a who reached the conclusion that it is a block of folded pre-Cretaceous rocks elevated and tilted to the east in late Tertiary time by a zone of faults along the west front of the range. His explanation of the structure of the Star Peak Range is similar, and he believes that the main fault along the west base of this range curves to the east through Cole Canyon and has thus effected the separation of the Humboldt Range into its two distinct divisions.

The Humboldt Lake Range contains no important mines, and no examination of it was made during this reconnaissance. The older structure of the Star Peak Range was found to be broadly anticlinal as described by Hague, the axis of the fold trending north-northeastward from Cole Pass and thus crossing the range obliquely. From Cole Pass to Unionville is a belt of Koipato rocks 7 to 8 miles in breadth. Southeast of it is the Buffalo Peak mass of the Star Peak formation. Northwest of the Koipato belt the main ridge, from a point southwest of Unionville to the valley of the Humboldt near Mill City, is also made up of the Star Peak formation, overlain in the vicinity of Humboldt House by Jurassic strata. Thus the northern half of the Star Peak Range has the structure of a monocline dipping a little north of west. If faulting along the west base of the range, as deduced by Louderback, actually occurred, the consequent eastward tilting of the whole mountain block must have decreased by so much the dip of the older monocline, which is still the most conspicuous structural feature of this part of the range.

HUMBOLDT QUEEN MINE.

The Humboldt Queen mine is situated 5 miles northeast of Oreana, a now little-used station on the Southern Pacific Railroad, and is be-

^a Op. cit.

tween the mouths of Sacramento and Limerick^a canyons, at the west base of the Star Peak Range.

Little has been ascertained relating to the history of this mine. It is known to have been in operation in 1883, and the aspect of the empty buildings indicates that some work has been done during the past two or three years. No statement of the total production was obtained.

The general country rock of the mine is thin-bedded limestone, mapped by Hague as part of the Star Peak formation. It forms at this place a narrow north-south belt, bounded on the west by the sediments of Lake Lahontan and recent alluvium and on the east by granite porphyry or rhyolite porphyry, which on the Fortieth Parallel Survey map is included with the Koipato formation. The belt as exposed is from one-third to one-half mile wide and appears on the Fortieth Parallel Survey map as the narrow southernmost point of the area of the Star Peak formation that farther north makes up most of the range. The limestone beds are thrown into sharp com-

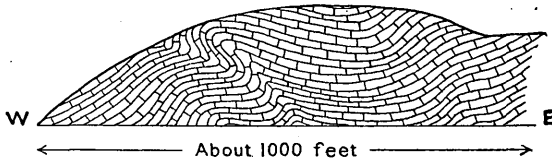


FIGURE 2.—Sketch of folded limestone as exposed on the slope of a small hill north of the Humboldt Queen mine.

plex folds trending generally about N. 10° E. A few of the folds are overturned, as illustrated in figure 2. Some beds are not noticeably meta-

morphosed, but others, especially the shaly ones, show considerable alteration, needles of tourmaline and rosettes of a dark-green mineral probably belonging to the chlorite group being noticed in some loose masses that had rolled down from the slope east of the mine. The limestone is cut by a north-south dioritic dike, in places several hundred feet wide, which passes a short distance east of the mine workings. The metamorphism may be due to the intrusion of this rock.

The Humboldt Queen mine comprises numerous openings along a section, 1,000 feet or more in length, of a complex north-south zone of veins in the limestone. The workings are mostly tunnels and shallow shafts or pits. At the south end of the explored zone, however, is an old inclined shaft from which most of the stoping appears to have been done, and just south of it a newer vertical shaft, apparently 200 feet or more in depth.

The veins are generally parallel with the bedding of the limestone and are sharply folded with that rock. In a few places they cut across the beds, but this appears to be exceptional. The consequence

^a On the Fortieth Parallel Survey maps the name Sacramento is applied to the canyon up which passes the road from Humboldt River to Fitting or Spring Valley. This is now locally known as Limerick Canyon, the one north of it being called Sacramento Canyon.

of this conformity with the bedding is much variation in dip and strike, and of course the failure of some veins or parts of veins to extend to great depth. In some places the veins are horizontal, in others they are vertical, and the change in dip or strike is in many instances very abrupt, as may be seen from figure 3, in which some of the structural eccentricities of these veins are diagrammatically illustrated. At the collar of the old inclined shaft the vein stopped dips 55° E., but at a depth of 30 feet it curves and a short distance below it dips 60° to 70° W.

The topography of the vein zone is irregularly hilly, and as the intricate folding may bring the same vein to the surface at many places, it is impossible to say without detailed study how many bed

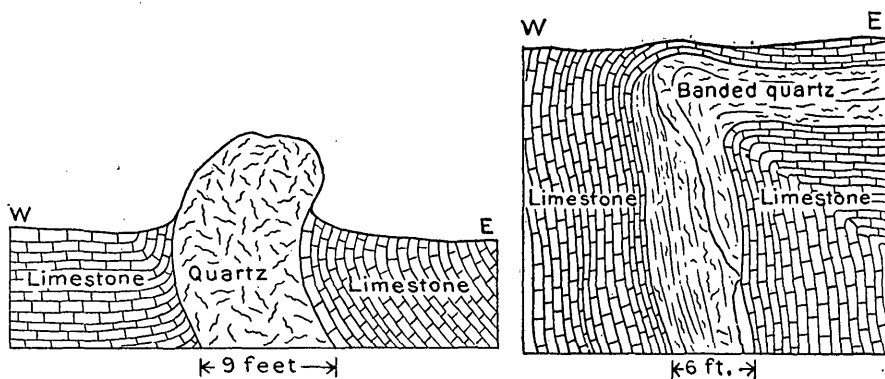


FIGURE 3.—Structural details at the Humboldt Queen mine.

veins there are in the belt. There appear, however, to be more than one.

The vein faces exposed show various widths up to about 10 feet. The filling is milk-white quartz, which in most places is banded parallel with the wall by thin dark seams of argillaceous material. The spaces now occupied by the veins were probably opened gradually, with successive deposition of quartz after each movement. Some of the folding appears to have taken place before all of the quartz was deposited, but much of the deformation is later than the veining, as the quartz is generally shattered, although not thoroughly crushed, and the banding of the quartz conforms as a rule to the folds. Other minerals noted in association with the quartz are calcite, pyrite, galena, sphalerite, and tetrahedrite.

FITTING AND AMERICAN CANYON.

The limestone belt in which is the Humboldt Queen mine terminates at Limerick Canyon. For about half a mile from its mouth this canyon is cut in the granite porphyry already referred to as lying east

of the limestone. This rock was not closely examined, but has the appearance of an intrusive mass. East of it the road over Spring Valley Pass crosses for more than 6 miles the main belt of the Koipato formation, which here appears to be composed mainly of dark-weathering siliceous porphyries. The belt is probably wider than as shown on the Fortieth Parallel Survey map, which represents the spurs between American Canyon and Fitting as composed of the Star Peak formation, whereas they appear to be made up largely of Koipato volcanic rocks, angular conglomerates, and tuffaceous grits. The lower ends of these spurs are capped by basalt, which is not shown on the Fortieth Parallel Survey map.

Fitting, still better known by its old name of Spring Valley, and the settlement of American Canyon, about 2 miles to the south, were flourishing placer camps in the early eighties. The only lode mine of importance is the Bonanza King, situated about half a mile south of Fitting. This mine, formerly known as the Eagle, shipped ore to San Francisco at least as early as 1884 and milled the lower grades at Mill City. Afterward a 15-stamp amalgamating and concentrating mill was built at Fitting, but this was not successful. The mine was worked by a lessee in the winter of 1907-8, but was idle at the time of visit.

The workings comprise a vertical shaft 300 feet deep, with levels 300 to 400 feet long and of generally rectilinear plan. The 125-foot level was the only one examined, as the upper ones are stoped to the surface and the lower ones are under water.

The vein strikes generally N. 60° W. and dips 82° SW. It follows an altered dioritic dike, which is about 45 feet wide. This cuts the rocks of the Koipato formation, represented, in the part of the workings examined, by a porphyritic rhyolite. Other rocks noted in the vicinity of the mine, and probably cut at various depths by the dike and vein, are rather angular conglomerates, grits, and tuffaceous beds, all containing much rhyolitic material and some limestone.

The vein consists of firm banded quartz and is generally within the diorite, separated by a thin slab of that rock from the foot wall of the dike. The old stopes, now open to the surface, are 5 to 6 feet wide, with smooth regular walls. On the 125-foot level the stopes are in some places 8 feet wide. A notable feature of the vein is its displacement by cross faults, of which five or six are known in the workings. These strike nearly northeast, dip southeast, and have normal throws. The maximum offset effected by any of these faults is about 35 feet. They cut the vein sharply and contain some crushed vein matter and ore.

The ore is reported to have ranged up to \$400 a ton, with a varying ratio of gold to silver. It is not susceptible to treatment in the

present mill, and the lessee stated that in 1907 he was able to recover by milling only \$8 a ton on what the smelter returns showed to be \$80 ore. The ordinary ore shows galena, pyrite, and sphalerite in milky translucent quartz, which in some places is slightly stained with coppercarbonates. The richest ore contains in addition argenteriferous tetrahedrite.

The placer deposits in Spring Valley are no longer worked. In American Canyon, however, about a dozen white people are living in the former Chinese village, and the gravels are being explored by two or three new shafts. For a distance of fully 2 miles from its mouth American Canyon shows signs of former activity in hundreds of pits amid piles of gravel. These pits are all that remain of the Chinese shafts, which were very small and ranged from 40 to 100 feet in depth. As little timber as possible was used, and after the productive gravel layers had been worked by drifting for short distances from a shaft it was abandoned and a new one was sunk. According to Mr. W. G. Adamson^a the pay streaks were found at depths of about 40, 60, and 85 feet. The total alluvial deposit in the canyon is in places much thicker, the Midas shaft, put down some years ago, being reported to be 200 feet deep and all in gravels and clays. No gold, so far as known, has ever been taken from the bed-rock surface in the bottom of the canyon, although this appears to have been reached in one of the newer shafts estimated to be about 100 feet deep. The gold is said to have been found mainly at the bottom of gravel layers, underlain by seams of clay. The gravel shows little rounding and apparently is subangular and imperfectly assorted wash from the adjacent hills.

According to Mr. Adamson, particles of cinnabar were often found with the gold in the rockers, and some good-sized bowlders of this mineral are said to have been taken from the gravels. This led to prospecting for cinnabar lodes, and some development work has been done at two places on the north side of the canyon. The only one of these visited is 2 or 3 miles from the mouth of the canyon, upstream from the placer ground. The deposit is a soft, crushed, kaolinized zone in porphyritic rhyolite. No walls are exposed and the zone is at least 6 feet wide. It dips north into the hill at 15° to 20°. Little specks of cinnabar are scattered through the kaolin, but no ore has been found, although an incline 200 feet long has been sunk and considerable drifting done.

The second deposit, said to be more promising, is a short distance north of the settlement of American Canyon, in limestone, with some eruptive rock forming the hanging wall. The vein is said to strike northwest and to dip 20° SW. Specimens shown me by Mr.

^a Oral communication.

Adamson contained abundant cinnabar in small irregular fissures in dark-gray limestone. The vein is said to have been traced for a length of 3,500 feet and to have been opened to a maximum depth of 150 feet.

UNIONVILLE AND VICINITY.

Unionville is situated on the east slope of the Star Peak Range, in Buena Vista Canyon. It is about 10 miles north of Fitting and 15 miles south of Mill City. Although no longer a bustling mining town, the quiet little settlement, with its running water, shade trees, orchards, and gardens, possesses charms that are the more pleasing because unlooked for in so generally arid a region.

The principal mines are a mile or two southwest of Unionville and at least 1,000 feet higher up the range. The rocks in the vicinity of the town and exposed along the road up to the mines belong to the Koipato formation and are conglomerates, grits, and limestones, with much siliceous porphyry, most of it probably rhyolite. The igneous rocks appear to occur both as flows and intrusions, but no careful examination of them could be made in the time available. The topmost member of the Koipato seen on the road to the mines is a sheet of porphyritic rhyolite apparently a few hundred feet thick. This rock is considerably silicified and extremely hard. In most places it shows flow banding, which, while more or less contorted, conforms generally to the dip of the mass as a whole and to the beds above and below it. In places, also, the rock is spherulitic and the microscope shows that it is a partly altered, originally glassy rhyolite flow. Much rock of this character appears to have been mistaken for quartzite by the Fortieth Parallel Survey geologists from the fact that its outcrops, seen from a distance, have some resemblance to that material. Overlying this rhyolite flow are thin-bedded, fossiliferous Middle Triassic (Star Peak) limestones, and it is in these that the ore bodies occur. Although generally gray in weathered exposures, the limestones are nearly black in underground workings, and are in part shaly. They form an elongated spoon-shaped synclinal mass, a little more than a mile in length and about 300 feet in greatest thickness, that occupies the summit of a hill on the spur between Buena Vista and Cottonwood canyons. The general relations of the limestone and rhyolite are roughly shown in figure 4, which is a mere sketch with no claim to accuracy of detail or to conformity to scale. Along part of its east side the limestone is bounded by a fault plane, along which it has been dropped against the rhyolite. A smaller mass of limestone, southeast of the larger one, is similarly faulted down along its west side. This contains the Wheeler mine.

The Arizona deposit is a bed or blanket vein that conforms with the bedding of the limestone and lies approximately 25 feet above the base of this rock or the top of the rhyolite. The vein has a maximum

thickness of about 6 feet and averages about 3 feet. It is remarkably regular and persistent and appears to be practically continuous under the entire hill. The largest angle of dip observed is about 30° , and under the crest of the hill the deposit is nearly horizontal.

The old Arizona workings are at the north end of the hill, overlooking Buena Vista Canyon, and were started on a prominent outcrop of white quartz. The old stopes extend south from the surface into the hill for over 1,000 feet and have an area of about 18 acres. Practically no timber was used, and the stopes, still in excellent condition, constitute a great labyrinth of galleries between the neatly piled masses of waste that support the roof. Raymond,^a who saw these stopes in 1871, noted

the unusual basin-like form of the deposit and remarked that the conditions were more suggestive of a coal mine than of one worked for precious metals. It is a fact of some interest that deposits of this character were known and worked in Nevada at the time when our mining laws of 1866 and 1872, apparently so little applicable to them, were passed. The statement made by Shamel,^b that "it is probable that at

the date of the passage of the statute of 1872 no instance was known of a vein which assumed a horizontal or even an approximately horizontal direction," is obviously incorrect.

The newer workings, which are developmental, are south of the old stopes. There are two tunnels, which connect with extensive exploratory drifts, crosscuts, and winzes or raises.

Although the vein as a whole has the form of a spoon it exhibits some structural complications. Faults, striking $N. 20^\circ$ to $30^\circ W.$ and dipping west, step the vein down to the west. The throw is generally greater at the north, the maximum displacement observed being about 75 feet. At one place near the south end of the workings there is a slight reverse throw on one fault plane that farther north is associated with normal dislocation. The principal faulting is along the

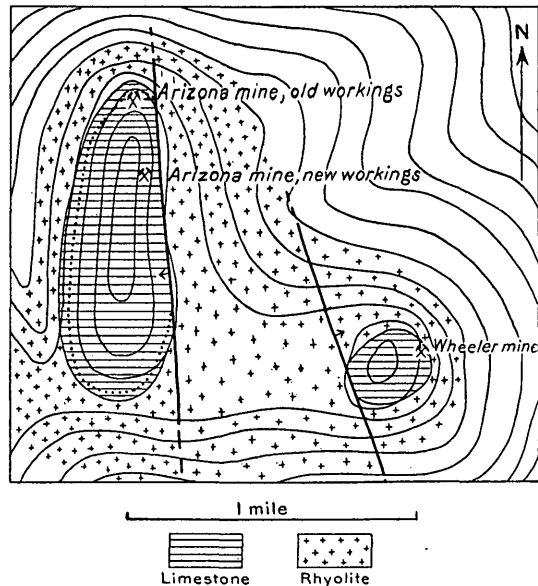


FIGURE 4.—Sketch plan showing the geologic relations of the Arizona mine.

^a Statistics of mines and mining, Washington, 1872, p. 206.

^b Mining, mineral, and geological law, New York, 1907, p. 233.

eastern edge of the syncline, and here the vein has been dropped against the rhyolite. In the vicinity of this fault zone both the vein and its inclosing limestones are, as a rule, disturbed. The vein is crushed, flexed, and to some extent dragged along the fault planes, some of this dragged material being good ore. The limestones are crumpled and in some places are mashed and squeezed to a structureless mass. In general, the contact of the vein with its walls is close and without gouge. In the vicinity of the faults, however, vein and limestone have slipped past each other, and in a few parts of the mine the vein disappears and its place is taken by a seam of gouge.

The normal vein material is solid milk-white to light-gray quartz. It generally shows more or less banding parallel to its walls and in some places is divided by thin partings of limestone. There is no evidence of any important replacement, and the quartz has crystallized in open spaces produced by the separation of the limestone along one or more bedding planes. The banded structure suggests that the separation was effected by successive movements, each followed by the deposition of quartz. There is a little calcite with the quartz, but it is rare. The recognizable ore constituents are pyrite, galena, sphalerite, and tetrahedrite. As a whole the quartz is not particularly rich in sulphides, and the tendency of these is toward fine dissemination along layers parallel with the walls of the vein. Some of the gray argentiferous particles, especially where the ore has been fractured and secondarily enriched, appear to be argentite; and some of the richest ore, yielding on assay up to 1,750 ounces of silver and 0.5 ounce of gold, contains dull, greenish-black masses that are apparently mixtures consisting largely of argentite.

The richest shoots of ore have probably been mined out, but according to Mr. Carmichael^a the average of a large number of samples from all exposed faces of the vein is about 20 ounces of silver and 0.05 ounce of gold.

At the south end of the hill, and probably on the same vein as the Arizona, is the Nevada-Union mine, which produced about \$60,000. It has been long abandoned and was not visited. Southeast of the Nevada-Union is the Wheeler (formerly the Henning) mine, on a vein which, although in a block of limestone now separated by faulting and erosion from the beds containing the Arizona vein, was probably once continuous with that deposit. The Wheeler mine has always been under the same ownership as the Arizona. It was worked by flat stopes from the surface and produced probably from \$100,000 to \$150,000.

In Cottonwood Canyon, 3 miles south of Unionville, is the Manoa or Pfluger mine, which has been worked in a small way for many years. The principal adit is 800 feet long and connects with several hundred

^a Oral statement.

feet of drifts. The general country rock is rhyolite, which appears to be overlain by a rhyolitic conglomerate with a steep dip to the west. Lower down the canyon and stratigraphically below the rhyolite are volcanic (largely rhyolitic) conglomerates, grits, and shaly limestones. All these rocks were included in the Koipato formation by the Fortieth Parallel Survey geologists. The rhyolite is cut by a complex north-south basalt dike, and both rhyolite and basalt are much faulted and sheared along north-south lines. In some places this zone of disturbance is fully 400 feet wide. The general dip of the zone appears to be about 70° W., but this is not clearly shown and it is not known whether this is the same or greater than the dip of the associated beds.

The ore occurs irregularly as bunches and streaks in this sheared and faulted zone, especially near the basalt, and is for the most part a replacement of the crushed rhyolite by galena, sphalerite, tetrahedrite, and possibly some silver sulphantimonite, in a gangue of barite and quartz. The mine has never been an important producer.

In Jackson Canyon, between Cottonwood and Buena Vista canyons, is an antimony deposit in rhyolite that is one of the flows in the Koipato. The vein strikes N. 35° W. and dips 75° SW. It has a maximum width of about a foot, but is irregular. It is accompanied by some parallel sheeting and veining of the rhyolite. The vein consists of rather vuggy white quartz with unevenly distributed bunches of stibnite. Three tunnels have been run on the vein and some narrow stopes opened. No work was in progress in 1908 and it is not known whether any shipments have been made.

STAR CANYON AND VICINITY.

The site of the former town of Star City, whose history has already been briefly told, is 6 miles north of Unionville and about 12 miles southwest of Mill City. When visited in 1908 no mining whatever was in progress in the canyon, and although the greater part of the Sheba workings was accessible, very little could be seen of the De Soto mine, which is south of the Sheba on the opposite side of the ravine.

The rocks in the immediate vicinity of the mines are rather thin-bedded gray limestones and tuffaceous sandstones interbedded with thin flows of rhyolite and related rocks—the porphyroids of the Fortieth Parallel Survey reports. These volcanic rocks are considerably altered and are in places partly schistose, so that the original character of some of them is not altogether clear. Most of them are rhyolite or rhyolite flow breccia. Some, while containing abundant phenocrysts of alkali feldspar, have no primary quartz and may be trachytes. No glass remains in any of these rocks, and quartz, calcite, sericite, and chlorite are common as alteration products. This heterogeneous assemblage of sediments and flows is overlain, just above the mines, by

the massive gray limestone of Star Peak, and is apparently underlain, below the Sheba mill, by dark slaty limestones in which the stream has excavated a more open valley than at the mines. All the rocks mentioned were placed in the Star Peak formation of the Triassic by the geologists of the Fortieth Parallel Survey, although, as noted on page 31, the abundance of volcanic material at the Sheba mine suggests the possibility of their correlation with the Koipato formation. The general strike of the beds and flows is N. 15° E. They dip 50° W.

The Sheba bonanza was close to the surface and, as the stopes and tunnels were carried into the hill, proved to be large and irregular. It consisted in part of several distinct lenticular seams of ore that followed certain bedding planes in the limestone or between the limestone and the associated grits and volcanic rocks. In many places these seams were connected by a network of veinlets across the limestone beds, and where these cross veinlets were abundant the whole mass was stoped as ore. The limestone was the rock most fractured and was the ore bearer. As a rule, fissures crossing a bed of limestone end at the plane separating this bed from grit or rhyolite.

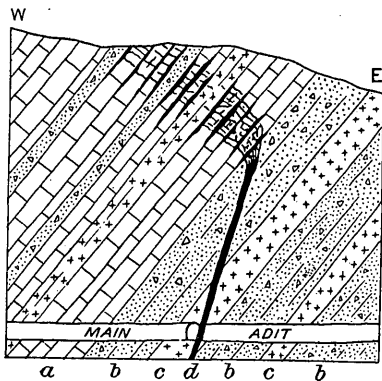


FIGURE 5.—Diagrammatic section of the Sheba ore body. a, Limestone; b, tuff; c, porphyry; d, ore.

The original pay shoots, which ramified through an area over 300 feet long from north to south and about 200 feet wide, were soon exhausted, and after vain attempts to

find any deep continuation of the ore the Sheba mine was for a time abandoned. About the year 1871, however, it was ascertained that the pay shoots first stoped were connected with a well-defined and regular fissure vein. It was hoped that a new era of prosperity was at hand, but after the vein had been worked to an additional depth of rather more than 100 feet below the old stopes operations were discontinued. So far as is known, there has been no exploration of the vein below the main tunnel. The general structural relations of the deposit are diagrammatically shown in figure 5.

The main tunnel has its portal at the bottom of the canyon and runs N. 55° W. for about 800 feet through tuffs and flows to the vein, which on this level is in rhyolite. The vein strikes nearly north and dips from 65° to 75° W. It is up to 3 feet wide, consists of solid quartz with bunches of sulphides, and has been stoped on this level for about 160 feet, but apparently was here of low grade. Cutting obliquely across the layers of tuff and volcanic rock, the vein, as shown

in figure 5, maintains its regularity up to the level above the main tunnel, a distance of about 100 feet. A short way above this level it enters limestone and at once changes in character. The stopes widen to 20 to 30 feet, the vein splits, and the whole deposit becomes more irregular and, as indicated in figure 5, has a general dip across the bedding to the east.

The Sheba mine produced an antimonial silver ore consisting of white quartz carrying argentiferous jamesonite, galena, sphalerite, pyrite, and tetrahedrite. Possibly other minerals rich in silver, such as stephanite and argentite, were present in the best ore, but these were not observed in the material now visible. Jamesonite is particularly abundant. According to B. S. Burton,^a who analyzed the minerals many years ago, the jamesonite from the Sheba mine contains over 6 per cent of silver and the tetrahedrite from the De Soto mine 14.5 per cent of silver.

During the last operation of the mine the ore was carried by an aerial tramway about half a mile down the canyon to the mill, which is equipped with rolls, Huntingtons, jigs, and concentrating tables.

The De Soto mine, which was worked in 1861 and at various times since, is immediately south of the Sheba mine and is on the same zone of mineralization. There are two tunnels. The upper one, which is very devious, extends about 600 feet into the hill, measured in a straight line. The lower one, not safely accessible at present, is about 900 feet long. The rocks are in general the same as in the Sheba mine, and the ore occurs similarly along bedding planes and in fractured limestone. Most of the lenses of ore along the bedding planes appear to be connected with one or more veins that cut the beds. The bed veins have been stoped for distances up to 100 feet from these transverse fissures, which apparently are branches of the now filled channels through which the ore-bearing solutions rose. The ore of the De Soto mine is similar in mineralogical character to that of the Sheba.

About a mile down the canyon from the Sheba mine, on the south side, is a quartz vein that cuts black shaly limestone and carries stibnite. A tunnel has been run in on the vein, but apparently the deposit was never productive.

In Bloody Canyon, a mile or two south of the Sheba mine, is another stibnite deposit, which has been worked in desultory fashion for many years and from which some shipments of good antimony ore have been made. It was not visited.

RYEPATCH MINE.

On the west slope of the Star Peak Range, 5 miles west of Unionville and 4 miles east of Ryepatch station, is the old Ryepatch mine, which after producing ore of the currently reported total value of

^a Contributions to mineralogy: Am. Jour. Sci., 2d ser., vol. 45, 1868, pp. 36-38.

over \$1,000,000 has lain idle for more than twenty years. Originally known as the Alpha or Butte mine, the property was sold about 1872 for \$80,000, and took its present name at the time of that transaction.^a

The workings, comprising several tunnels and extensive stopes, are on the north side of Panther Canyon, in thin-bedded, more or less altered limestones supposed to belong to the Star Peak formation. The metamorphism, probably due to the granitic intrusion of Rocky Canyon referred to on page 31, is not here very conspicuous, consisting chiefly of the development of one or more species of fibrous silicates, probably belonging to the amphibole group, and in some beds of a white mica in almost microscopic scales.

The structural features of the deposit, which are unusual, may be most easily understood by reference to figure 6.

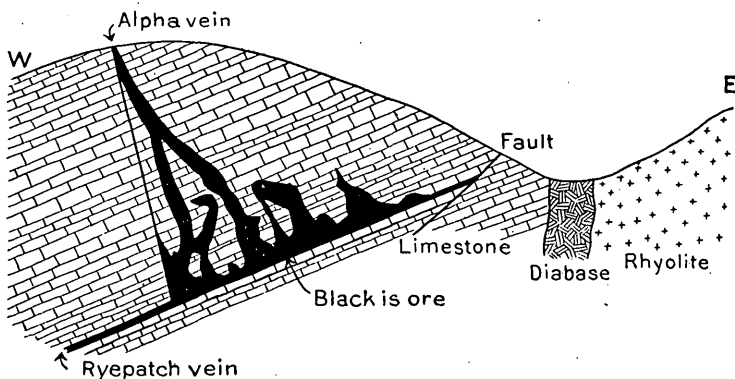


FIGURE 6.—Diagrammatic section of the Ryepatch ore body.

The Ryepatch vein, which follows the bedding of the limestone, has no recognized outcrop. Originally a shaft was sunk on a fault fissure that showed obscurely along the west side of a little lateral ravine eroded along a decomposed basic dike. (See fig. 6.) At a depth of 30 to 40 feet ore was found in a bed vein that strikes about N. 15° W. and dips 25° W. On the east this vein is cut off by the fault; on the west, at a distance of about 250 feet from the original discovery, it is joined by a fissure that strikes N. 25° E., dips 75° SE., and is known as the Alpha vein. All of the ore stoped came from the block of limestone between the two fissures. This mass is fissured in all directions and much of it is shattered to fragments. The ore, consisting of shattered limestone full of bunches and branching stringers of quartz and calcite, occurred as great irregular masses bounded in part by definite fissures but grading on most sides into country rock. The total length of the ore-bearing ground, from north to south, was about 600 feet and the total width about 250 feet.

^a Raymond, R. W., Statistics of mines and mining, etc., for 1872, Washington, 1873, p. 156.

The Alpha vein itself is merely a fissure that bounds the ore on the west. It has a smooth slickensided hanging wall with practically no gouge and is not itself continuously filled with quartz. The Ryepatch vein, on the other hand, carried quartz and ore almost continuously from the point where it was first opened down to the junction with the Alpha fissure. In places this ore was narrow and had a definite hanging wall; elsewhere the ore extended from the foot wall for long distances and in very irregular fashion into the broken limestone, as roughly indicated in figure 6. The Alpha fissure, so far as known, does not extend below the Ryepatch vein. The Ryepatch vein continues westward beyond the Alpha fissure, but becomes smaller, more regular, and of much lower grade beyond the junction. A lower tunnel, some distance down the canyon from the main workings, has been run with the hope of cutting the Ryepatch vein. The vein, however, has not been identified at this depth. The tunnel follows a strong nearly north-south fissure zone, which suggests the possibility of considerable displacement of the Ryepatch vein by this or similar fissures west of the Alpha vein.

The vein material of the Ryepatch mine consists of quartz, calcite, pyrite, galena, sphalerite, tetrahedrite, and perhaps stephanite and argentite. The best ore is said to contain little or no calcite, galena, or sphalerite. No first-class ore was visible in the stopes at the time of visit.

ELDORADO CANYON.

The chief interest in Eldorado Canyon at present is derived from a deposit of cinnabar that was being prospected in 1908. The Ruby Cinnabar mine is about 6 miles southeast of Humboldt House (8 miles by road), on the northwest slope of Star Peak.

The ore occurs in a dark limestone, presumably belonging to the Star Peak Triassic, and has been opened by superficial tunneling. The beds in the vicinity dip generally west, but at the mine they are much disturbed and little was learned of their detailed structure at that place. The cinnabar is irregularly distributed through the fractured limestone, and the deposit as at present developed is a rolling, nearly horizontal mass about 80 feet long, 40 feet wide, and 6 feet thick. According to Mr. W. G. Adamson, the average tenor of the whole body is about 2 per cent of quicksilver. The cinnabar occurs as little branching veinlets, small bunches, and minute specks throughout the mass. In part it has filled fractures, but in part it has replaced crushed limestone. Some of the material through which the veinlets of cinnabar ramify is nearly black, earthy in appearance, and of noticeably high density. A lens shows that this material is crowded with minute specks of cinnabar and of pyrite or marcasite. The

weight and dark color suggest also the presence of metacinnabarite, but verification of this supposition is not practicable in so fine grained a mixture of sulphides. The limestone adjacent to the ore is minutely fissured and faulted and contains many open crevices, especially under the ore body. Evidently there has been considerable removal of calcareous material by solution, and much of the fracturing associated with the deposit is probably due to the collapse of solution cavities and a settling down of the overlying rock. The workings have not exposed any vein or fissure that can be accepted as a probable main channel through which the ore constituents reached their present position.

NORTH END OF THE STAR PEAK RANGE.

North of Star Peak and Eldorado Canyon there has in the past been considerable mining activity in Humboldt, Prince Royal, Garden, Santa Clara, and other canyons. None of these old workings was visited. The Imlay (formerly the Morrison) mine, about 6 miles east of Humboldt House, is reported to be 300 feet deep with two levels. Work was in progress here in 1908 and the company was fitting up a mill near the mine.

On the crest of the range, at the head of Antelope Canyon, is the Thornton prospect, apparently in pre-Tertiary rhyolite. This was being developed in 1908, and a little rich ore was found containing free gold, associated with pyrite, sphalerite, galena, and a mineral resembling tetrahedrite, in a gangue of white quartz. Prospecting was going on also, in 1908, in Black Canyon, where the finding of some rich bunches of free gold ore in similar veins in the Triassic porphyries was causing a small influx of miners and speculators.

GENERAL FEATURES OF THE ORE DEPOSITS OF THE HUMBOLDT RANGE.

The ore deposits of the Humboldt Range, especially of the Star Peak Range, have certain common characteristics that mark their provincial unity or coherence. They occur in Triassic rocks, especially in the limestones of the Middle Triassic. Their age is not definitely known, but inasmuch as they appear to have been closely connected in origin with the folding of the Triassic and Jurassic beds it is probable that, like the gold veins of the Mother Lode belt in the Sierra Nevada, they date from early Cretaceous time. Mineralogically and structurally, however, they differ very widely from the California veins.

The ores, as a rule, are antimonial and contain much more silver than gold, with relatively little lead and zinc. Stibnite (or the similar lead sulphantimonite, jamesonite) is rather abundant, both

with the silver ores and in deposits not containing notable quantities of the precious metals.

The tendency of the ores to deposit as bonanzas in certain structurally favorable places is noteworthy. It is exemplified by the bed veins of the Humboldt Queen, Arizona, and Wheeler mines and by the remarkable ore bodies of the Sheba, De Soto, and Ryepatch mines. In this connection also may be noted the close physical relation between the character of the ore body and the kind of wall rock and the fact that none of the deposits in the limestone has maintained its size and tenor when followed down into the underlying rocks. The absence of persistent veins at all comparable in richness with the masses worked within a short distance of the surface is one of the disappointing features of the region. The bonanzas apparently represent continued accumulation or enrichment, in favorable spots, of material that came in through channels insignificant in size or unsuited for the precipitation of rich ore.

PAHUTE RANGE.

GENERAL FEATURES.

The range east and south of the Humboldt Range is designated on the Fortieth Parallel Survey maps and on Spurr's^a map as the Pahute^b Range. Although this name is not in common use by the inhabitants of the region, it is here retained as a convenient term for the entire range, since the various names locally employed apply only to parts of the whole. Thus the northern part, east of the Humboldt Range, is commonly spoken of as the East Range; farther south it is the Table Mountain Range; and still farther south it appears on the Land Office maps as the Silver Range or the Stillwater Mountains.

From Humboldt River on the north the Pahute Range extends south for 50 miles, past Granite Peak, to the fortieth parallel. Here it bends and sweeps southwest for another 50 miles across the course of the Humboldt Range, and then again turning south continues to the vicinity of Wonder and Fairview, where it merges with other mountain groups.

The rocks of the Pahute Range are generally similar to those of the Humboldt Range. The two divisions of the Triassic are well represented, and the geologists of the Fortieth Parallel Survey have mapped some Jurassic beds along the west flank of the north end of the uplift. Exposed at several places over considerable areas, notably near Granite Peak, are masses of granite rocks, which, although referred to the Archean in the Fortieth Parallel Survey reports, are

^a Bull. U. S. Geol. Survey No. 208, 1903, Pl. I.

^b Or Pah Ute.

at least in part post-Triassic. It is doubtful whether any Archean rocks occur in the range. Large areas, especially southeast of Spaulding Pass, north of Sou Springs, and in the vicinity of Table Mountain, are covered by Tertiary volcanic flows and tuffs. In the course of the present reconnaissance the range was crossed at only two places, and it is consequently impossible to add anything of value to what has already been published on the general structure. The Mesozoic rocks are much folded and the axes of the folds are not related in any regular manner to the topographic axis. As Louderback^a has shown, the form of at least a part of the range has a much closer dependence upon late Tertiary faulting than upon the post-Jurassic folding.

The mining districts are more sparse than in the Star Peak Range, and the country, especially south of Granite Peak, is less frequented and is roamed by herds of mustangs or wild horses. At the north end, about 10 miles northeast of Mill City and just south of Dun Glen Peak, is Chafey, formerly Dun Glen, in the Sierra district. Tiptop, a new camp that had not attained any importance in 1908, is just south of Chafey. South of Natchez Pass is Orofino Canyon, where some mining was done thirty to forty years ago, and Rock Hill Canyon, where are old worked-out placers. Gold Banks, not visited, is apparently situated close to the divide between Grass and Pleasant valleys, whether in the Pahute or Sonoma Range was not ascertained. It was reported that the camp, after a brief period of activity, had become very quiet in 1908.

In French Boys Canyon, north of Granite Peak, a little prospecting is going on in rocks shown on the Fortieth Parallel Survey map as Koipato Triassic. They are conspicuously metamorphosed to slates and schists, contain abundant epidote, and show very plainly the influence of the granitic intrusion to the south.

Kennedy, at the east base of the range, east of Granite Peak, is practically deserted and no work of consequence was in progress in 1908.

About 30 miles a little west of south from Kennedy, in Cottonwood Canyon near Table Mountain, are nickel and cobalt veins, and a few miles south of them some copper deposits. No work was being done at any of these in 1908.

Still farther south, on the west side of the range, is Coppereid, in the White Cloud district, where a long crosscut tunnel is being driven by the Nevada United Mining Company. The exact position of this camp, owing to the general topographic and geologic inaccuracy of the Fortieth Parallel Survey map in its vicinity, remains in doubt. It is in T. 23 N., R. 34 E., and is apparently near the place indicated

^a Op. cit., pp. 322-327.

in Plate I. About $2\frac{1}{2}$ miles north of it is Copper Kettle, where, it is reported, are some promising copper prospects, and 6 to 7 miles farther north, at the end of a low spur projecting into the valley west of Chataya Peak, is a deposit of magnetite, said to occur in greenstone, although the Fortieth Parallel Survey map, probably in error, shows Tertiary basalt at this place. According to Mr. John T. Reid, about 1,000 tons of this ore was shipped to San Francisco in 1893-4. A few miles south of Coppereid is a new prospecting camp called Shady Run.

CHAFEY AND THE SIERRA DISTRICT.

The new town of Chafey, which in the late summer of 1908 was rapidly covering the old site of Dun Glen, is 10 miles northeast of Mill City and about 20 miles southwest of Winnemucca. After the closing of the Auld Lang Syne mine many years ago a little desultory work continued near Dun Glen, especially on Munroe Hill, where the veins carry free gold near the surface. According to the excellent article by Wisker in the Mining and Scientific Press, referred to on page 14, what was known as the Hendra group of claims was bonded to H. W. Kent in 1905 for \$10,000. Under his direction a vein that assayed well was cut in a short tunnel, but the discovery appears not to have been followed up. The ground was next bonded to Charles Harlowe for \$30,000. He interested E. S. Chafey in the prospect, and the latter undertook to raise the necessary money to develop it. Mr. Chafey began work about June, 1908, and by September of the same year is said to have shipped enough ore to purchase the mine. When the camp was visited in September, 1908, it presented a scene of brisk activity. Buildings were going up on all sides, and freight teams and stages, almost buried in dust, were plying back and forth between the new town and Mill City.

The ravine to which the name Dun Glen appears to have been originally given runs northeast and southwest, and 2 miles south of the summit of Dun Glen Peak heads in a pass through which goes the road to Winnemucca. The length of the glen is about 4 miles, and the claims about which the present activity centers are all on the southeast side. At the northeast end of the line, just south of the pass, is the Auburn mine. About a mile southwest of it is the Auld Lang Syne mine. Both had been long idle at the time of visit. A mile southwest of the Auld Lang Syne is Chafey's mine, on the Mayflower claim, locally called the Black Hole. About half a mile southwest of this is the Golden Bell tunnel. South of the tunnel, across a small east-west ravine that opens just below the town of Chafey, is a spur known as Munroe Hill. Here are many small veins, upon which lessees were busily at work in 1908.

The rocks in the vicinity of the mines mentioned were mapped as Star Peak Triassic by the Fortieth Parallel Survey geologists, and the few hours spent in the district were not sufficient for critical revision of their stratigraphy. West of the town are dark slaty rocks supposed to be Jurassic. Similar slates underlie the town of Chafey and occupy most of the bottom of the glen, so that it is not clear from a brief examination of the district why the line separating the Jurassic and Triassic on the Fortieth Parallel Survey map should have been drawn west of Dun Glen so as to divide rocks so alike in general appearance.

As the visitor goes east from Chafey and climbs the slope to the mines, he crosses the strike of the beds and passes first over dark clay slates that strike N. 15° E. and dip 80° W. Lenses of limestone appear in the slates as the mines are approached, and along the mineralized zone itself the slate and limestone are succeeded by a belt of altered igneous rocks that are for the most part flows and flow breccias more or less interleaved with the sedimentary rocks. The width of this predominantly igneous belt was not ascertained, but was reported to be about half a mile.

The prevalent kinds of igneous rock are rather dark gray and show small dull phenocrysts of plagioclase in a fine-grained groundmass. Many are mottled and suggest squeezed flow breccias; others appear to be glassy (vitrophyric) lavas that have been rendered partially schistose. The microscope shows that the plagioclase phenocrysts are the only original minerals now recognizable. The groundmass is made up of an aggregate of quartz, calcite, sericite, kaolin, and other secondary minerals, of which the proportions vary in different flows or facies. The rocks represent vitrophyric andesite flows and flow breccias that have been folded and compressed with the slates and have developed incipient schistosity. Cutting all the rocks mentioned are dikes of normal olivine diabase (dolerite) with typical ophitic texture. In the diabase the plagioclase and the augite, which is brownish red in transmitted light, are fresh, but the olivine is more or less serpentinized. These dikes show no evidence of compression subsequent to their solidification, and were probably injected after the folding.

The Black Hole workings, which are about 1 mile east of Chafey and at over 1,000 feet greater elevation, consisted early in September, 1908, of a tunnel about 200 feet long, partly on the vein, with stopes extending about 25 feet up to the surface. Exploration was in progress also through a new inclined shaft, 60 feet deep, with short drifts.

The vein, which is of solid banded quartz up to 6 feet wide, strikes N. 50° E. and dips 45° to 50° SE. It accompanies a diabase dike

and cuts obliquely across the volcanic flows and associated slates. As almost no crosscutting has been done little could be learned of the character of the wall rock. At one place the foot wall is limestone.

The vein minerals are quartz, galena, pyrite, sphalerite, and native gold, some of the gold being partly embedded in the galena. The gold seen is pale and probably contains a good deal of silver; according to Mr. Chafey the ratio of silver to gold in the ore is generally as 2 to 1, by weight. The richest ore occurred in the oxidized part of the vein, but this is very superficial. A short distance northeast of the Black Hole tunnel the vein passes into one of the andesite flows and splits up into a zone of stringers. At one place an open cut shows such a zone over 16 feet wide, with slate on the foot wall. The richest ore from the Black Hole is hauled to Mill City and shipped. The lower grades are treated (1908) in an old 3-stamp mill at Chafey.

The Golden Bell tunnel, about 600 feet long, follows a regular vein, with an average width of approximately 4 feet. It resembles the vein at the Black Hole workings and is presumably the same, although no accompanying dike was noted. The foot-wall rock was not exposed at the time of visit, but the hanging wall is altered andesitic flow breccia. Some stopes have been opened above the tunnel and evidently some ore was shipped or milled. No work, however, was in progress in 1908.

The veins of Munroe Hill strike nearly north and south and are almost vertical. They are in partly schistose andesite and andesitic flow breccia, and one of them, at least, accompanies a diabase dike. The entire zone of veins is at least 300 feet wide and appears to represent a southern extension and splitting up of the vein worked at the Black Hole. At the Bishop lease on the May Muller claim some high-grade ore was being taken in 1908 from a vein on the east side of the zone. The vein is from 1 to 2 feet wide, strikes north, and dips 80° E. It has a diabase dike along the hanging-wall side. The ore, which was being taken from an open cut near the top of the hill, was oxidized and contained free gold, with probably halogen compounds of silver. A blue-green material occurring as specks in the ore and supposed by the miners to be bromide of silver proves to be chrysocolla. At another lease, distinct from the former, although known as the Bishop & Co. lease, a tunnel was being driven on the north side of the hill to cut some ore discovered above, and at many other places on the Munroe Hill lessees were sinking shafts or beginning tunnels. The ore thus far found on the hill occurs near the surface and is probably considerably richer in gold than that below the limit of oxidation.

The Auld Lang Syne mine was worked through three tunnels down to water level, and the quantity of material on the dumps and at the site of the old mill about a mile above Chafey indicates that large and

productive stopes were opened. Where the stopes come to the surface an excellent section of the vein is exposed, which is illustrated in figure 7.

The vein zone is about 100 feet wide and contains a number of nearly parallel quartz veins and stringers, separated by silicified andesite. The strike of the lode is N. 5° W. and it dips, as a whole, 65° E. On the hanging-wall side is a regular diabase dike 25 feet wide. The principal vein stoped is, as shown in figure 7, near the hanging wall of the zone. This dike, notwithstanding its proximity to the veins, is not generally altered and contains considerable olivine that has escaped serpentinization. The principal mineralogical change in the andesite, as elsewhere in this district, is the development of secondary quartz and sericite, the resulting rock outcropping and weathering much like a hard siliceous rhyolite.

The mine being quite deserted, I was able to procure no information concerning the character of the Auld Lang Syne ore. Some of the material last thrown out on the dump shows much arsenopyrite, with some pyrite arranged in depositional bands in quartz.

Some of the veins near Chafey appear to be unusually persistent and regular. That they become lean within a moderate distance of the surface is suggested by all that can

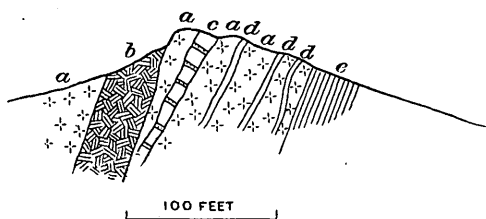


FIGURE 7.—Sketch section of the Auld Lang Syne vein zone. a, Silicified andesite; b, diabase; c, vein, stoped to surface; d, vein; e, slates.

be learned of the history of the district; but one looking at the croppings of the Auld Lang Syne vein and at the work accomplished there finds it difficult to believe that the old mine will not some day be reopened, especially as its nearness to the railroad gives it and other mines in Dun Glen a great advantage over many in Humboldt County—as, for example, those at Kennedy, next to be described.

KENNEDY.

The almost deserted town of Kennedy lies at the east base of Granite (or Cinnabar) Mountain, about 30 miles by road southeast of Unionville and about 45 miles from the railroad at Mill City.

The distribution of the rocks in this vicinity is rather different from that represented on the Fortieth Parallel Survey map. The “granite” of Granite Mountain, supposed by the early geologic explorers to be Archean, is, at least locally, a diorite and is intrusive into Triassic rocks. Its outline, therefore, is undoubtedly much more irregular than they supposed. The bottom of the canyon from the

crest of the range down to Kennedy is all in the diorite, and the rock appears to extend farther north in the vicinity of Kennedy than is shown on the Fortieth Parallel Survey map. On the other hand, the hills directly southwest of Kennedy, shown as "granite," are for some miles in that direction made up of altered pre-Tertiary (probably Triassic) volcanic rocks, with perhaps some sedimentary beds.

The diorite in the vicinity of Kennedy is, as usual in such intrusive bodies, not altogether uniform, and it is possible that much of the Granite Mountain stock may be granodiorite or some quartz-bearing granular rock near that type.^a The rock in the pass west of Kennedy appears to be fairly representative of so much of the mass as was seen at close range. This is a bright gray, medium-grained rock showing abundant hornblende and biotite in a feldspathic base whose individual crystals are not distinct to the naked eye. As seen in hand specimens, the diorite is not noticeably quartzose.

The microscope shows that the feldspars are mainly oligoclase and mottled intergrowths of oligoclase or albite with orthoclase, the whole forming a rather intricately interlocking mosaic. Green hornblende is abundant, and the larger individuals as a rule inclose and are more or less intergrown with augite that is pale green in thin section. Both these minerals are intergrown with biotite and with magnetite, apatite, and titanite. A noteworthy feature of the diorite is the generally alkalic nature of the feldspars in association with rather abundant augite, hornblende, and apatite in a rock free from quartz. It is probably near monzonite in composition, and a chemical analysis would doubtless show less lime and more alkalis than in typical diorite.

The principal mine near Kennedy is the Gold Note, credited with a production of \$60,000 to \$70,000, but now idle, like all others in the district, where the only active industry in 1908 was the catching of wild horses for shipment to Oregon. It is situated on the south side of the canyon, about a mile west of town, and is opened by two crosscut tunnels. The lower and main adit runs S. 33° W. and is about 700 feet long. It cuts the vein, which strikes N. 65° W. and dips 25° (or less) S., about 375 feet from the portal. The general country rock is rhyolite, which is intruded rather irregularly by sheets and dikes of basalt. The rhyolite apparently forms thin flows, and the vein and part of the basalt have followed stratigraphic planes in the series of rhyolitic lavas. Associated with the rhyolite in some parts of the workings is a dark greenish-gray rock,

^a Hague (U. S. Geol. Expl. 40th Par., vol. 2, 1877, p. 691) indeed describes the crystalline granitic rocks of Granite Mountain as made up chiefly of quartz and orthoclase, with scarcely any mica or hornblende (alaskite of Spurr). This suggests greater variation in the character of the rock than was evident from my own brief and limited observations.

evidently much altered, which was at first supposed to be metamorphosed limestone. The microscope shows, however, that it is an altered volcanic rock, probably andesite, and is composed chiefly of chlorite, calcite, and secondary quartz.

The basalt is a partly glassy, ordinary variety, in which some serpentinous material suggests the former presence of a small proportion of olivine. Its appearance under the microscope is that of an extrusive rock, whereas its relations underground indicate at least some intrusion. Clearly it was not intruded at any great depth.

The vein is from 1 to 3 feet wide and is composed generally of quartz and abundant pyrite. Associated with these minerals in the parts of the vein stoped are galena, sphalerite, tetrahedrite, and a little chalcopyrite. Along most of its course the vein is in rhyolite, but in some places it traverses basalt.

From the main adit drifts have been run in opposite directions. The west drift, apparently not very productive, follows the vein for about 90 feet to a zone of faulting that steps the gently inclined vein down below the level of the drift. These faults strike N. 20° W., dip west, and are normal. The first one drops the vein about 4 feet, and the second, 6 feet farther along the drift, carries the western continuation of the vein out of sight. Along the east drift the vein, at first in rhyolite, passes into basalt, becomes rather irregular, and at about 120 feet from the tunnel splits into two branches that diverge at a small angle. The north branch contains only bunches of ore. The south branch, which passes into rhyolite, has been stoped at intervals and apparently contained the principal ore bodies of the mine. At a distance of 500 feet from the adit the two branches of the vein are about 100 feet apart.

There was no one at hand in 1908 to give information about the mode of occurrence of the ore in the abandoned stopes, but it may be surmised that the pyritic parts of the vein are of low grade and that the richer ore is bunchy, difficult to mine on account of the low dip of the vein, and not amenable to treatment in ordinary mills.

The Borlasca mine lies southeast of the Gold Note and is apparently on the same vein or vein zone. The workings, which have not been productive, are all in the oxidized part of the vein and are shallow. The vein material is chiefly quartz and specular hematite, and as the unoxidized vein in the Gold Note mine is chiefly quartz and pyrite it is probable that the specularite was derived from the pyrite by weathering, although unfortunately the present workings afford no opportunity for observing the actual passage from pyrite to specularite.

In the bottom of the canyon, about half a mile above Kennedy, is the abandoned Hidden Treasure or K. and B. mine, in a rather basic facies of the diorite. An open cut exposes two veins about 18 inches

wide separated by a foot or two of decomposed diorite. The veins strike northwest and dip about 50° SW. The vein material, as indicated by the dump of the closed main tunnel, contains very abundant pyrite and some sphalerite, with a subordinate quantity of quartz and calcite.

Half a mile north of Kennedy is the Imperial mine, which is credited with a production of about \$10,000. It was not visited, but is said to be in the diorite and to have yielded lead-silver ore containing some gold. Some specimens of galena seen in Kennedy were stated to have come from this mine. Attempts were made to work this ore in a 20-stamp plate-amalgamation mill with cyanide tanks, now owned by the Borlasca Company. This and the various smaller mills in the district appear to have been designed without any regard whatever to the character of the ores to be treated.

NICKEL AND COBALT DEPOSITS OF COTTONWOOD CANYON.

From Kennedy to Boyer's ranch at the mouth of Cottonwood Canyon the distance by road is about 30 miles.^a The usual route is through Pleasant Valley past the volcanic Sou Hills and Sou Springs, the latter being about halfway in the journey. These springs consist of six or seven circular pools, 40 to 50 feet in diameter, with funnel-shaped bottoms, distributed along the crest of a calcareous tufa mound that rises from 50 to 60 feet above the alluvium of the valley. The pools differ in temperature, some being cold and some at about 85° C. A description of these springs with a good illustration (looking south toward Boyer's ranch) and some chemical analyses are given by Hague.^b From Sou Springs south the road skirts the east face of the Stillwater Range, which is here very precipitous and is notched by narrow ravines, many of which have not cut down to the main valley, but have built up high-angle alluvial cones at their mouths. The rocks in this part of the range appear to be mainly Triassic (Star Peak) limestones cut by masses of some light-colored intrusive rock.

The topography and geology in the vicinity of Cottonwood Canyon are very inadequately represented on the Fortieth Parallel Survey map, which shows the Triassic rocks ending at the canyon, with Tertiary rhyolite south of them, all being capped to the west by basalt.

The canyon for about half a mile from its mouth is cut through dark-gray and reddish indurated clay shales, overlain by gray limestone, and this in turn by several hundred feet of light-colored thin-bedded quartzite. All three rocks are intricately intruded and contorted by tongues, dikes, and irregular masses of dioritic rock, whose

^a Boyer post-office is on most maps of Nevada erroneously placed at the south end of the great salt playa of Osabb (Dixie) Valley, whereas it is really north of it.

^b U. S. Geol. Expl. 49th Par., vol. 2, 1877, pp. 704-705, Pl. XX.

complex relations to the sedimentary beds are impressively displayed in the steep bare front of the range northwest of Boyer's ranch. West of these beds, which are supposedly Triassic, the canyon for several miles is in a dioritic rock that shows considerable variation in texture and composition from place to place. Probably the most widespread variety is a medium to fine grained diorite consisting originally of plagioclase, hornblende, and perhaps augite, with considerable titanite and some apatite and magnetite. As a rule the diorite is much altered. The plagioclase is partly changed to calcite and sericite and the hornblende to epidote, calcite, chlorite, and a pale-green secondary amphibole. Other facies observed are darker and contain more hornblende, with some biotite. Still others are coarsely crystalline, are roughly foliated, and have a mottled appearance due to poikilitic development of the feldspar.

In the upper part of the canyon, in the vicinity of the nickel deposits, the diorite is intrusive into andesite and andesite breccia, much of which is so altered that its original character is scarcely recognizable. Near the diorite the andesite is silicified, carries disseminated particles and bunches of hematite with streaks of copper ore, and weathers in craggy rusty outcrops. Farther from the contact the rock is dark purplish gray and shows in places a suggestion of a tuffaceous or breccial structure and the outlines of feldspar phenocrysts. The microscope shows that the plagioclases, partly altered to sericite and calcite, are the only original minerals recognizable. The femic minerals have been changed to calcite, and particles of hematite are disseminated thickly through the groundmass.

Both the andesitic rock and the diorite are cut by dikes and by small irregular masses of a white feldspathic rock in which rutile in minute scattered crystals and grains is the only dark constituent. The grain of these dikes varies from that of an ordinary granite to that of a rather fine quartzite. The microscope shows that the plagioclase is chiefly sodic oligoclase, with a little orthoclase and probably some albite. The sharply angular spaces between the subhedral crystals of feldspar are occupied in part by calcite and in part by fine granular, microscopically radial aggregates of a mineral supposed to be quartz. The calcite is presumably secondary, as some of it has formed at the expense of the feldspars. Most of it, however, appears to have filled empty spaces by infiltration, the feldspars that inclose it preserving their original crystal outlines. The accessory minerals are rather abundant rutile with apatite and zircon. The rock is of uncommon character and will probably be briefly described in a separate publication when a chemical analysis of it is completed.

The work of the Fortieth Parallel Survey indicates that the sedimentary rocks and andesitic rocks described are probably Triassic

and that the diorite and white dikes are late Mesozoic. No additional information was obtained in the course of the present reconnaissance.

Resting upon these rocks at the head of the canyon is a thick series of nearly horizontal Tertiary volcanic rocks. Near their base is at least 300 feet of andesitic breccia with some intercalated vesicular basalt. The actual base of this series was not observed. Overlying the andesite tuffs is about 200 feet of rhyolite, covered in turn by a succession of thin volcanic flows, which, as seen from a distance, apparently include both andesite and basalt. Table Mountain is capped by these flows.

Among the many interesting geologic features of Cottonwood Canyon to which but scant attention could be given in so hasty a visit may be especially mentioned an extinct hot-spring deposit 2 or 3 miles above Boyer's ranch and about half a mile below the Nickel mine. This is a great mound of siliceous sinter surmounted by a crater-like orifice fully 200 feet above the present stream, which has cut deeply into the mound and has exposed its steep quaquaversal stratification. The deposit rests on diorite and was formed at a time when the canyon had not attained its present depth.

The Nickel mine is situated on the north side of Cottonwood Creek, from 3 to 4 miles above Boyer's ranch. It was opened about 1882, when, it is reported, a car of 26 per cent nickel ore was shipped to Camden, N. J., and was worked for eight years. It was then closed in consequence of litigation. Work was resumed in 1904 but ceased again in 1907.

The workings are on a contact between diorite and andesite or andesite breccia, the rock being too much altered for certain identification. The contact, which is here more regular than elsewhere and may be due to local faulting, strikes N. 50° E. and dips 35° NW., the diorite forming the foot wall. The ore, which is all in the andesitic rock, has been exploited by cuts, tunnels, and an inclined shaft about 200 feet deep. It occurs in narrow fissures that make various angles with the contact and are not individually persistent. Some ore has been followed for a distance of 100 feet from the contact, measured perpendicularly to that plane. The diorite in the foot wall shows fissuring and disturbance and carries stringers of quartz, but no ore.

The seams of nickel ore are rarely over 3 or 4 inches in width, and all the material seen was more or less oxidized. The original filling, of which some residual masses remain, is partly a sulpharsenide of nickel, probably gersdorffite, according to Mr. W. T. Schaller, who tested the material in the Geological Survey laboratory. It is probable that chloanthite and other nickel minerals are also present, as the original ore has the appearance of being in part a mixture of arsenides or

sulpharsenides of nickel. The residual kernels of sulpharsenide are veined and coated with a bright green hydrous nickel arsenate, probably annabergite, as determined by Mr. Schaller. This constitutes most of the ore. No quartz or other distinctive gangue mineral was noted in the veinlets. The nickel minerals are not confined to the major fissures, but have penetrated the rock in their vicinity for several inches along joints and microscopic cracks, forming a low-grade ore which the company has attempted to treat by leaching with sulphuric acid.

The Lovelock mine, about half a mile west of the Nickel mine, is reported to have shipped a total of about 500 tons of high-grade nickel-cobalt ore, but has long been idle. The workings comprise a labyrinth of superficial burrowings, by which the miners have followed or sought for the small erratic veinlets of ore, and a precarious shaft that no attempt was made to explore. This shaft is said to have been sunk to water and to be connected with exploratory drifts just above the water level. It apparently is not much more than 100 feet deep. The country rock is altered andesite like that at the Nickel mine. No diorite was seen, but it would probably be cut in deep workings.

The seams or veinlets of ore run in practically all directions and have no definite walls. The ore, all of which is partly or wholly oxidized, is more complex than that of the Nickel mine and contains copper and cobalt as well as nickel. The minerals recognized are tetrahedrite, erythrite (cobalt bloom), azurite, and green crusts that according to Mr. Schaller contain copper and nickel arsenates and sulphates and consequently may be a mixture of annabergite and brochantite.

A few miles south of Cottonwood Canyon, high on the east slope of the range, is a copper prospect which is now known as the Treasure Box, but which appears to have formerly been called the Bell Mare or Cornish mine. The ore, in the form of pyrite and chalcopyrite, is disseminated through andesitic tuff in the lower part of the Tertiary volcanic series. This impregnation extends through a belt at least a mile long and several hundred yards wide, which trends about N. 70° E. The most abundant sulphide is pyrite, the chalcopyrite occurring only here and there in bunches. The pyritization is by no means uniform and fades out indefinitely into the surrounding rock. Apparently there is no vein and no master fissure whence the mineralization has emanated.

At the east end of the deposit some oxidized copper ore has been taken from open cuts and a shaft has been sunk, apparently without the discovery of workable ore. A water-jacket furnace was erected at this place, the highest point at which the deposit outcrops, but was never used. Two tunnels, one of them about 400 feet long, have been run near the west end of the pyritic zone.

COPPEREID.

Coppereid, in the White Cloud district, on the west slope of the Stillwater Range, was the most southern locality visited in the course of the reconnaissance. The only work in progress in 1908 was by the Nevada United Mining Company, which is driving a tunnel into the south side of White Cloud Canyon at an elevation of about 1,000 feet above the valley of Carson Sink.

The lower part of the canyon is a narrow, steep gorge cut through a moderately coarse, slightly micaceous granite, intruded by many dikes of granite porphyry and by a few of diorite porphyry. Farther up the granite appears to grade into granite porphyry (although this was not established with certainty) and the porphyry is succeeded to the east by a series of limestones and calcareous shales, with a few beds of gypsum, into which it is plainly intrusive.

These sediments are overlain to the east by volcanic flows and tuffs that form the crest of the range, although on the Fortieth Parallel Survey map this is represented as being made up of the Star Peak Triassic. No fossils are known from the sedimentary rocks in White Cloud Canyon, but they are presumably Middle Triassic. They are metamorphosed by the granite porphyry intrusion, the purer limestones being marmorized and others being altered throughout by the development of garnet, epidote, fluorite, quartz, axinite, specularite, and metallic sulphides.

The workings of the Nevada United Mining Company comprise a main crosscut tunnel near the bottom of the canyon. The course of this is S. 37° E., and its length at the time of visit was 2,000 feet. On the steep hillside above the tunnel are old shallow workings that were operated about fifteen years ago for oxidized copper ore, which was reduced in a small smelter at the mouth of the canyon. Still higher, about 850 feet vertically above the main tunnel, are two tunnels known as the Twin tunnels. Both are at the same elevation, have their portals near together, and run nearly in the same general direction, so that they apparently represent an effort to explore the ground with as much labor as possible. One of these penetrates the hill for 700 feet.

About 350 feet above these tunnels is the summit of the ridge separating White Cloud Canyon from the next ravine to the south. Here is a large outcrop of specularite, which carries in places a little oxidized copper ore. There is probably from 100,000 to 200,000 tons of this material actually exposed on the hilltop and in the shallow exploratory workings that have been run into the mass. Much of it is practically pure specularite, ranging in texture from soft, greasy, rougelike varieties to coarsely foliated kinds. The copper is rather sparingly distributed through some parts of the iron ore as

malachite. There are several of these masses of iron ore on the ridge. They appear to occur as pods, lenses, and irregular bodies associated with considerable fluorite and distributed through a broad mineralized zone that strikes east and west and dips about 45° N. The masses themselves strike and dip in various directions. On the west the zone, which is in limestone, ends at the intrusive contact of this rock with the granite porphyry a few hundred yards from the great hematite outcrop on the crest of the ridge.

The Twin tunnels were run under the supposition that the hematite on the ridge is the gossan of a great vein. They penetrated a little oxidized ore consisting of chrysocolla, specularite, limonite, calcite, colorless fluorite, and epidote, but disclosed nothing of value and did not cut any mass of specularite comparable with that above.

A similar expectation led to the driving of the main tunnel. The portal of this is in white to buff crystalline limestone carrying small bunches of specularite and in places much garnet and some pyrite. The beds appear to strike southeast and dip northeast, but the structure is very indistinct. At 400 feet from the portal a crosscut was driven east for 600 feet, and from this, about 200 feet in, a branch was run north to a broad zone of marmorized limestone heavily impregnated with slightly cupriferous pyrite. In places this is so abundant as to form nearly solid masses. This is probably the same zone that carries specularite near the mouth of the main tunnel and the one from which some of the oxidized copper ore was mined near the surface fifteen years ago. There is no recognizable vein; the pyrite has formed in the limestone by metasomatic replacement and is without definite boundaries. Beyond the branch the east crosscut continues for 400 feet through much broken and disturbed limestone, with many open crevices partly filled with soft, earthy limonite. The material suggests active solution by oxidizing waters, the formation of cavities, and the subsequent collapse of the cavernous rock into a mass of coarse, angular rubble.

The greater part of the main tunnel is in fine-grained dark limestone and originally calcareous shales that have been converted into dense siliceous hornstones. These are cut by many small veinlets carrying calcite, axinite, sphalerite, pyrite, and chalcopyrite. In some places they contain round or ellipsoidal concretions up to 6 inches in diameter, which when broken open show a septarian structure and a kernel of silicates, quartz, calcite, pyrite, pyrrhotite, chalcopyrite, and sphalerite. Among the silicates epidote, in short prisms and grains thickly embedded in calcite, is most abundant. It is associated with brushes of capillary crystals that have not been certainly identified but may be an amphibole—possibly tremolite.

According to a letter from Mr. John T. Reid, manager of the mine, the tunnel on January 18, 1909, was 2,750 feet in length and was

making so much water from the face (1,250,000 gallons in twenty-four hours) that work had been temporarily suspended. Prior to tapping this water the tunnel passed through a number of small fissures carrying some chalcopyrite, and about 100 feet from the face, according to Mr. Reid, went through 3 feet of vein material containing chalcopyrite and pyrrhotite.

The conclusion reached from the short examination made of the main tunnel and the old workings, supplemented by a general survey of the surface, is that all the workings are in a zone of pronounced contact metamorphism, within which bunches of lean sulphides and of specular iron of irregular shape are rather erratically distributed. These show a decided tendency to form thick pods or lenses of indefinite outline, rather than distinct and persistent veins of which the positions could be calculated for depths far below their outcrops. Thus deep crosscutting involves more than the usual hazard of such a mode of exploration. While one would be rash to assert that no profitable vein will be cut in the tunnel, there is nothing on the surface or in the old workings that demonstrates the existence of any but isolated masses of ore throughout a contact zone.

The small quantity of primary ore thus far found, consisting of pyrite, pyrrhotite, and chalcopyrite, is of low grade, as is to be expected in deposits of contact-metamorphic type. The old stopes near the surface, from which ore was formerly obtained for the smelter at the mouth of the canyon, show considerable migration and concentration of oxidized copper ore, and solutions that extracted their copper from lean sulphides (or possibly from sulphides previously enriched) have deposited chrysocolla by direct replacement of crystalline limestone. The steps of this process, from narrow veinlets of chrysocolla widened by replacement, through rounded kernels of limestone inclosed in the copper silicate, to solid masses of the latter, are beautifully shown in the old stopes.

The occurrence of great masses of specularite on the top of the ridge and of large bodies of pyrite far below in the main tunnel suggested at first that the specularite was derived from pyrite by oxidation. Specularite is present, however, although not so far as known in large masses, in the lower tunnel, where it has crystallized with sulphides and garnet as a primary contact mineral. No material could be found that showed the passage of sulphides into specularite, and the evidence at this locality, while not conclusive, rather favors the view that all of the specularite is of direct contact-metamorphic origin.^a

^a Since this was written considerable masses of specularite intimately associated with pyrite have been cut in the tunnel 2,800 feet from the portal and about 1,000 feet below the surface. This places the contact-metamorphic origin of the specularite beyond reasonable doubt.

SONOMA RANGE.

The Gold Run district, in which the most important property is the Adelaide mine, 11 miles nearly due south of Golconda, is on the east slope of the northern part of the Sonoma Range.^a The rocks of this part of the range are generally similar to those of the Pahute and Humboldt ranges. No attempt was made in this reconnaissance to study their lithology or structure, except at the Adelaide mine, where they have been mapped as Star Peak Triassic by the geologists of the Fortieth Parallel Survey.

The district was organized in 1866. Development apparently was slow, for in 1870 the principal shaft, the Golconda, was only 80 feet deep. South of this were the Cumberland, 50 feet deep, and the Jefferson, with still shallower workings. There were some small mills in the district, and desultory attempts were made to work the partly oxidized ores up to about 1897, when the Glasgow and Western Exploration Company acquired the mines and 15 claims along the ore-bearing zone. This company built 12 miles of narrow-gage railway from Golconda to the mine and erected a smelter and concentrating mill at the junction of its road with the Southern Pacific Railroad. This plant, consisting of two roasting furnaces and three reverberatory smelting furnaces, with the ordinary arrangement of crushing and concentrating machinery, was operated for a time on ores from Battle Mountain and from Adelaide, and some matte was shipped. The process, however, proved unsuited to the Adelaide ore and was abandoned. A few years ago the mill was remodeled and 120 concentrating tubes of the Macquisten type were installed. An interesting description of this remarkable plant has been given by W. R. Ingalls,^b and from this the reader may obtain some idea of the ingenuity, simplicity, and effectiveness of this novel process, in which the heavy sulphides are floated off while the gangue minerals sink. Some improvements in the first installation were in contemplation in 1908, and the mill was in use by Mr. Macquisten solely for experimental purpose. Its total capacity was given as 120 tons in twenty-four hours. It produced when in full operation a 20 per cent concentrate from 2.7 per cent copper ore, leaving about 0.2 per cent in the tailings. The weakest point in the process appears to be in the relatively low recovery from the slimes.

The main shaft of the Adelaide mine, 300 feet deep, is situated on the south side of Gold Run Creek, close to the site of the old settlement of Cumberland. The general country rock is dark calcareous slate, within which is a layer or series of beds of limestone from 50 to 75 feet in total thickness. This bed strikes north and dips 65° E.

^a The Havallah Range of the Fortieth Parallel Survey reports.

^b Concentration upside down: Eng. and Min. Jour., vol. 84, 1907, pp. 765-770.

This limestone layer carries the ore, which in some places occupies the full width from one slate wall to the other, although as a rule the zone contains horses of altered limestone that is nearly free from sulphides. The ore body is undoubtedly large and has been extensively stoped above the 100-foot level for 400 feet without any indication of a diminution in size. Below this level, which is approximately at the bottom of the zone of partial oxidation, exploratory drifts have been run at vertical intervals of about 50 feet, revealing abundant ore. The bottom level was under water at the time of visit.

The ore is a metasomatic replacement of the limestone and consists of pyrrhotite, chalcopyrite, sphalerite, and a little galena, in a gangue of garnet, vesuvianite, diopside, calcite, orthoclase, and a very little quartz. Common pyrite is probably not altogether absent, although it does not appear in the specimens of ore collected. The presence of orthoclase is uncommon in this mineralogic association, but adularia has been noted by Spurr and Garrey ^a in the altered limestones of the Velardeña contact zone. At Adelaide the orthoclase is poikilitic and contains inclusions of vesuvianite, garnet, diopside, and quartz. The ore is definitely bounded only where it is in contact with the slates. Elsewhere it merges gradually and irregularly into limestone containing silicates but very little of the sulphide constituents. A banding of the limestone, due to alternations of silicate and calcite layers, is common, particularly near the ore, and the bands in places are contorted and crumpled. As a whole the ore is of low grade, averaging about 3 per cent of copper; but the quantity available appears to be large, and the difficulties in the way of its successful concentration and treatment will probably soon be overcome.

The present workings do not afford much evidence of secondary enrichment. The old stopes between the 100-foot level and the surface were in mixed sulphide and oxidized ore, but whether chalcocite was present in quantity is not known.

About 600 feet north of the main shaft, on the opposite side of the little creek, is a tunnel that runs north in the ore zone for 2,000 feet. For a distance of 500 to 600 feet from the portal the tunnel is in ore. Beyond this the limestone zone is generally lean or barren, although there are a few bunches of ore near the face and some stopes above the tunnel were formerly worked from a now abandoned shaft on the hilltop.

A notable feature of the Adelaide ore bodies, in view of the fact that the nearest area of eruptive rock (mapped as granite on the Fortieth Parallel Survey map) is fully a mile east of the mine, is their close correspondence to ores of typical contact-metamorphic deposits. The granitic rock was not examined in 1908. For at least a quarter of a mile east of the mine the rocks are dark clay slates alternating

^a Ore deposits of the Velardeña district, Mexico: Econ. Geology, vol. 3, 1908, p. 708.

with thin-bedded limestones. All are much crumpled but maintain a generally east dip and are on the whole much less metamorphosed than the limestone beds in which the ore occurs. It is probable that an intrusive mass underlies the sedimentary rocks at the Adelaide mine, and that the hot mineralizing solutions rose along what is now the ore zone, in consequence of favorable fissuring in this particular belt of limestone.

West of the mine the slopes, seen from a distance, show many outcrops suggestive of rhyolitic porphyries, which accord in general with the mapping of the higher part of the range by the geologists of the Fortieth Parallel Survey as Koipato Triassic. Within these a number of prospectors are developing veins that carry some gold and silver. None of these prospects was visited.

MINERALOGY OF THE ORE DEPOSITS.

Introductory statement.—For convenience of reference the minerals noted in the ores or closely associated with them are here given in alphabetic order, with brief notes on their occurrence. The list is obviously not an exhaustive one for the region, which contains many deposits not visited.

Amphibole.—A fibrous mineral, not certainly identified, but closely resembling tremolite, occurs with epidote, vesuvianite, garnet, and sulphides in the metamorphosed calcareous rocks at Coppereid. A similar fibrous mineral was noted in some of the altered limestone at the Ryepatch mine.

Annabergite.—A bright-green, hydrous nickel arsenate, probably annabergite, is an important constituent of the ore of the Nickel mine in Cottonwood Canyon, west of Boyer post-office.

Argentite.—Sulphide of silver has been found in shallow workings in rhyolite at Rosebud, associated with kaolinite, limonite, and jarosite. Presumably it was present also in some of the rich silver ores mined in former days near the surface in the Humboldt Range. A specimen of ore seen in Unionville and said to have come from the Arizona mine apparently contains argentite.

Arsenopyrite.—The sulpharsenide of iron was noted only in material on the dump of the Auld Lang Syne mine, near Chafey, associated with pyrite and quartz.

Axinite.—Axinite, a complex borosilicate of calcium, aluminum, and other bases, occurs in the altered calcareous shales of the Coppereid contact zone.

Azurite.—The blue hydrous copper carbonate is nowhere abundant in the region examined, but is present in small quantity in the Red Butte copper district and at the Lovelock cobalt-nickel mine, in Cottonwood Canyon.

Barite.—Sulphate of barium was noted as a gangue mineral in ore from a prospect near Fitting; with galena, sphalerite, tetrahedrite, and quartz in the Manoa or Pfluger mine, near Unionville; and in some of the copper prospects at Red Butte.

Bornite.—Minute specks of a mineral resembling bornite were noted with chalcopyrite in quartz at the Mazuma Hills mine, in the Seven Troughs district. Not enough of the material was obtained, however, for a satisfactory determination.

Brochantite.—Brochantite, a green basic sulphate of copper resembling malachite, probably occurs in the cobalt-nickel ore of the Lovelock mine.

Calcite.—Calcite is sparingly present with quartz in the ores of the Humboldt Queen and Arizona mines, in the Humboldt Range, in some of the veins near Kennedy, and in the deposits of contact-metamorphic type at Coppereid and Adelaide.

Cerargyrite.—Cerargyrite, or horn silver, is generally an inconspicuous mineral and probably occurred in many of the rich silver deposits formerly worked in the Humboldt Range.

Chalcocite.—Copper glance, cuprous sulphide, was noted only at Red Butte, in a vein in gabbro. It is probably present also in the upper parts of the ore bodies at Adelaide.

Chalcopyrite.—Copper pyrite is an important constituent of the Adelaide ore, associated with garnet, vesuvianite, epidote, diopside, calcite, quartz, orthoclase, pyrrhotite, sphalerite, galena, and pyrite. It is present also in the cobalt-nickel ore of the Lovelock mine; in the disseminated pyritic deposits of the Treasure Box mine, southwest of Boyer's ranch; in some of the veins near Kennedy; and sparingly in the Mazuma Hills mine, at Seven Troughs. Close search would probably show it to be present in small quantities also in most of the mines of the Humboldt Range.

Chloanthite.—A mineral of the smaltite-chloanthite group is perhaps present with gersdorffite at the Nickel mine, in Cottonwood Canyon, but it has not been definitely identified.

Chrysocolla.—The hydrous silicate of copper occurs in the oxidized zone of the Copperoid contact deposits, where to some extent it has metasomatically replaced limestone. It is sparingly present at Red Butte and is found in minute specks in some of the oxidized ore of Munroe Hill in the Chafey district.

Cinnabar.—The red sulphide of mercury occurs in fractured limestone in Eldorado Canyon, in the Humboldt Range; in a vein in limestone and in kaolinized rhyolite in American Canyon, in the Pahute Range; and at an unvisited prospect on the edge of the Black Rock Desert, a few miles south of Red Butte. It has also been found in the gold-bearing gravels of American Canyon.

Copper.—Native copper was noted only near Red Butte, where it is disseminated through aplitic dikes that cut gabbro.

Covellite.—The deep blue cupric sulphide occurs sparingly as a product of weathering in the superficially opened copper prospects of Red Butte.

Cuprite.—Earthy cuprite occurs with covellite, chrysocolla, and iron oxides at Red Butte.

Diopside.—Monoclinic calcium-magnesium pyroxene occurs with garnet, vesuvianite, orthoclase, and sulphides in the ore of the Adelaide mine.

Epidote.—Epidote, a basic orthosilicate of calcium, iron, and aluminum, is fairly abundant in the contact zone at Coppereid, associated with garnet, specularite, axinite, and sulphides.

Erythrite.—Cobalt bloom, a hydrous cobalt arsenate, is an important constituent of the ore of the Lovelock mine in Cottonwood Canyon. It is associated with tetrahedrite, azurite, and arsenates and sulphates of nickel and copper (probably annabergite and brochantite).

Fluorite.—Fluorspar is fairly abundant in the contact zone at Coppereid and is especially associated with specularite.

Galena.—Galena is widely distributed in the Humboldt region, and is found in the ores of nearly all of the districts visited. None was seen, however, in the Seven Troughs district. Specimens from the Imperial mine near Kennedy showed enough galena to constitute a lead ore, but as a rule the mineral is disseminated rather sparingly through quartz with sphalerite, pyrite, and tetrahedrite. At Chafey free gold and galena are directly associated. In Star Canyon galena and jamesonite occur together.

Garnet.—Brown garnet is abundant at both Coppereid and Adelaide, where it occurs with other silicates and with sulphides in altered limestone.

Gersdorffite.—The principal unoxidized constituent of the ore of the Nickel mine, in Cottonwood Canyon, is, according to Mr. W. T. Schaller, probably gersdorffite, a sulpharsenide of nickel. It is associated with a green alteration product, which he has determined as annabergite.

Gold.—Native gold occurs in visible masses, some of them of unusual size, in the quartz veins of the Seven Troughs district. It is also found associated with quartz and galena in the Chafey district and in various prospects in the Humboldt Range near Star Peak. Specimens of free gold have been found also in rhyolite just south of Golconda, but not in such form or quantity as to induce deep mining.

The principal placer localities of the region are American Canyon and Spring Valley (Fitting), on the east side of the Star Peak Range,

and Rock Hill Canyon, in the East Range. Several other canyons, especially in the northern part of the Star Peak division of the Humboldt Range, also yielded some placer gold.

Hematite.—Large masses of specularite occur in the contact-metamorphic zone at Coppereid, and the same mineral is abundant in the superficial workings of the Borlasca mine, near Kennedy. In the latter place the specularite is possibly gossan material derived from the oxidation of pyrite. Some cryptocrystalline siliceous hematite occurs in the Red Butte district, associated with the copper ores. The material, which is in part jasperoid, appears to have been formed by alteration of parts of the aplitic dikes.

Jamesonite.—Jamesonite, a sulphantimonite of lead with considerable resemblance to stibnite, is an abundant constituent of the ore of the Sheba and De Soto mines, in Star Canyon. It is associated with galena, sphalerite, tetrahedrite, and pyrite in quartz. Both the jamesonite and the tetrahedrite, as shown by Burton,^a are silver bearing.

Jarosite.—Jarosite, a hydrous sulphate of alkalis and iron analogous in its formula with alunite, was identified microscopically as minute yellow crystals associated with kaolinite and limonite at the Brown Palace mine, near Rosebud.

Magnetite.—Masses of iron ore, chiefly magnetite, occur about 20 miles southeast of Lovelock, at the northwest base of the Pahute Range. The deposits, said to be in "greenstone," were not visited.

Malachite.—The green hydrous carbonate of copper is present in small quantities at Red Butte, Coppereid, Adelaide, Cottonwood Canyon (Stillwater Range), and probably at other localities where ores containing copper minerals have undergone oxidation.

Orthoclase.—The potassium feldspar orthoclase occurs with garnet, vesuvianite, diopside, calcite, and sulphides in the ore of the Adelaide mine. The mineral is xenomorphic and poikilitic, containing inclusions of the minerals associated with it.

Proustite.—Ruby silver has been reported from the Seven Troughs district. None was seen in 1908.

Pyrrhotite.—Magnetic pyrite is an abundant constituent of the ore of the Adelaide mine and occurs also in the contact zone at Coppereid.

Silver.—Native silver is said to have been found in Wildhorse Canyon, in the Seven Troughs district.

Sphalerite.—Zinc blende is a very widely distributed mineral in the Humboldt region and occurs in nearly all of the districts visited. It was not observed, however, at Seven Troughs. It is not as a rule abundant at any one place, but, like galena, is disseminated rather sparingly through the various ores.

^a Contributions to mineralogy: Am. Jour. Sci., 2d ser., vol. 45, 1868, pp. 36-38.

Stibnite.—The widespread distribution of stibnite, or antimony glance, is characteristic of the region covered by this reconnaissance. Deposits of stibnite have been worked in the Trinity or Antelope Range, southeast of Red Butte; in the Humboldt Range, southeast of Lovelock; in Star Canyon; in Bloody Canyon, 2 miles south of Star Canyon; in Jackson Canyon, about a mile south of Unionville; and in the Bernice district, about 16 miles south of Boyer's ranch, where there was at one time considerable activity. The Bernice district is south of the area studied in 1908. Stibnite occurs also associated with some of the gold ores at Seven Troughs, and is undoubtedly present at many localities not examined in the course of this preliminary investigation. The mineral occurs generally in fissure veins with quartz, although at Seven Troughs it forms bunches in soft, crushed rock or gouge.

Sulphur.—Native sulphur is extensively mined at the Rabbit Hole sulphur mine, about 5 miles northwest of Rosebud.

Tetrahedrite.—Gray copper, or tetrahedrite, like sphalerite and galena, occurs in most of the silver-gold deposits of the Humboldt and Pahute ranges. It is nowhere very abundant nor in large masses, but is disseminated in specks or small bunches through the predominant quartz gangue. As a rule it is argentiferous (freibergite) and its presence indicates an ore rich in silver. The tetrahedrite of the De Soto mine, according to Burton,^a contains 14.5 per cent of silver.

The mineral was noted in the ores of the Humboldt Queen mine; of the Arizona, Wheeler, and Manoa mines, near Unionville; of the Sheba and De Soto mines, in Star Canyon; of the Ryepatch mine; and of the Gold Note mine, near Kennedy. It also occurs with cobalt minerals at the Lovelock mine.

Tourmaline.—Tourmaline was not observed in close association with ores, but occurs as an abundant microscopic constituent of altered limestone or calcareous shale near the Humboldt Queen mine.

Vesuvianite.—The characteristic contact-metamorphic mineral vesuvianite, a basic calcium-aluminum silicate of uncertain formula, occurs abundantly with garnet, diopside, calcite, quartz, orthoclase, and sulphides at the Adelaide mine. It was identified by its optical properties as seen under the microscope.

TYPES OF DEPOSITS REPRESENTED IN THE REGION.

Basis of classification.—The ore deposits of a given region may be classified in many different ways, as, for example, (1) by geologic age, (2) by form, (3) by supposed origin, (4) by mineralogic character, or (5) by essential metallic contents. In the present paper an attempt

^a Loc. cit.

will be made to group the deposits primarily with reference to the closely related fourth and fifth bases of comparison. The grouping thus effected will to some extent coincide with classifications dependent upon genetic or morphologic features.

Antimonial silver deposits.—A large proportion of the deposits of southern Humboldt County consist essentially of silver ores carrying varying minor quantities of gold. These ores are prevailing antimonial, the silver being combined chiefly in tetrahedrite or jamesonite. They generally contain in addition a little galena (probably argentiferous) and sphalerite, with of course some pyrite. The gangue is quartz, and as a rule the sulphides are subordinate to the gangue and are rather finely disseminated through it. Argentite and other rich silver-bearing minerals may occur in the upper parts of some of these deposits.

To this class belong the deposits of the Sheba and De Soto mines, in Star Canyon; of the Arizona, Wheeler, and other mines near Unionville; of the Humboldt Queen and Ryepatch mines; of the principal mines at Kennedy and Fitting; and of a number of unvisited mines and prospects in the Humboldt Range. Possibly the deposits of the Rosebud district belong in this group, but too little ore has yet been found there to furnish a safe basis for comparison.

With the exception of the doubtful ores at Rosebud, all of these deposits are in Triassic rocks and most of them are in the Star Peak formation. Beyond the fact that the ores are post-Triassic their age is unknown, but it is thought probable that they are pre-Tertiary and were deposited during or after the post-Jurassic intrusions and folding that affected the whole Great Basin region and the Sierra Nevada.

The antimonial silver ores generally fill fissures, but they show much variety in form. Some deposits, as that of the Bonanza King mine at Fitting, are comparatively simple, nearly vertical veins. Some, while generally of simple tabular form, have a low angle of dip, as in the Gold Note mine, at Kennedy, or are nearly horizontal, as at the Arizona mine, near Unionville. Others are of irregular shape and are related in special ways to fissuring and bedding, as in Star Canyon and at the Ryepatch mine. Still others, such as the Humboldt Queen deposits, are sharply folded bed veins.

None of these deposits has been worked to great depth, and the rich ores appear to form bonanzas within short distances from the surface. As a rule, the deeper workings show a decrease both in the size and tenor of the deposits. At present there is no production from any mine in ore of this type, although many of them were extensively and profitably worked in the sixties.

Gold-silver deposits.—The deposits that owe their value chiefly to gold are those at Seven Troughs and at Chafey. There are marked differences, however, between the ores of the two districts. Those at

Seven Troughs are in Tertiary volcanic rocks; those at Chafey are in Mesozoic volcanic and sedimentary rocks, probably Triassic. At Seven Troughs the gold is coarse, occurs in lodes made up of many small irregular quartz veinlets, and is accompanied by comparatively little pyrite, with as a rule no other sulphides. Stibnite, it is true, occurs in some of the mines, but not, according to my observation, as a constituent of actual ore. At Chafey the native gold is in smaller particles and occurs in well-defined solid veins in which the quartz carries considerable galena, less sphalerite, and comparatively little pyrite. Whether the veins of the Auld Lang Syne and other abandoned mines exhibit the same character is not known, although arsenopyrite appears to have been the principal sulphide in the lower levels of the Auld Lang Syne. Neither at Seven Troughs nor at Chafey were the accessible workings deep enough in 1908 for a thoroughly satisfactory comparison of the two kinds of deposits.

Gold prospects, of which the ores resemble the Chafey ore, in that the gold is associated with galena and sphalerite in quartz veins traversing Triassic rocks, have been opened at various places in the region, particularly in the vicinity of Star Peak.

Copper deposits.—Like the gold deposits, the copper deposits of the region fall into two classes. One of these is exemplified by the deposits southwest of Boyer's ranch, in Tertiary andesite, and by those at Red Butte, which are in igneous rocks doubtfully regarded as of Tertiary age. The deposits near Boyer's ranch are diffuse pyritic disseminations. Nothing is known of the Red Butte deposits beyond what may be seen from very shallow workings in oxidized material; the greater part of the copper appears to be disseminated through altered aplitic dikes in gabbro, and the native metal may be expected to give place in depth to some sulphide, perhaps to chalcocopyrite.

The deposits at Coppereid and Adelaide, on the other hand, are in calcareous sedimentary rocks, probably belonging to the Triassic. They have the mineralogical characteristics of contact-metamorphic deposits, although at Coppereid only is there visible relation between the metamorphism and a mass of intrusive rock that effected the alteration. Garnet, chalcocopyrite, pyrrhotite, sphalerite, and pyrite are common to both localities; although no sulphide ore bodies have yet been opened at Coppereid. Axinite, fluorite, epidote, and specularite occur in the contact zone at Coppereid, but were not noted at Adelaide. At the latter place, on the other hand, the altered limestone contains vesuvianite, diopside, and orthoclase. Doubtless a more thorough study would increase the lists of silicate minerals present at each locality. The deposit at Adelaide, like those at Yerington,^a shows that ore bodies of essentially contact-metamorphic type

^a Ransome, F. L., The Yerington copper district, Nevada: Bull. U. S. Geol. Survey No. 380, 1909, pp. 99-119.

are not necessarily in direct contact with igneous rocks near the surface.

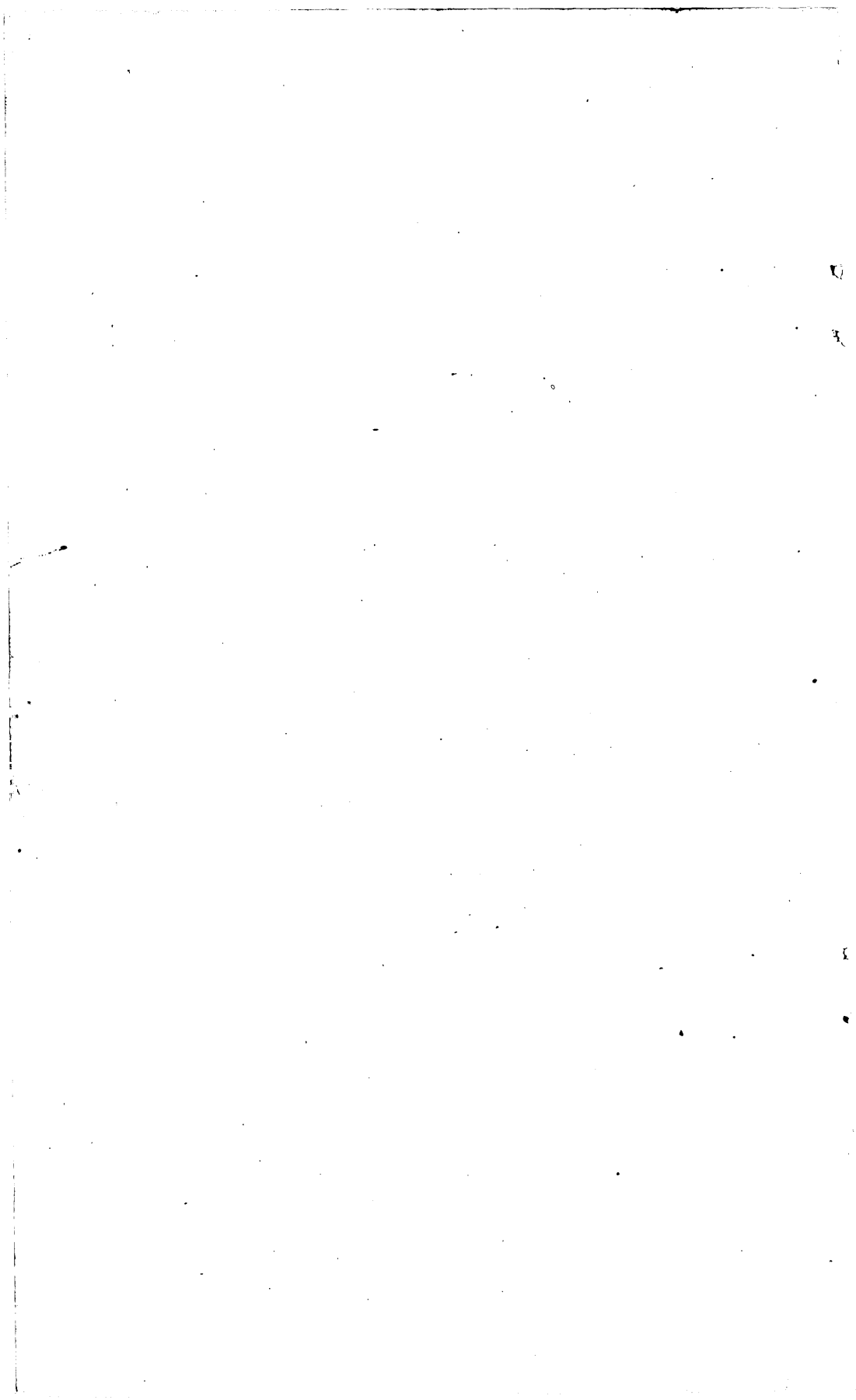
Antimony and quicksilver deposits.—The general character and distribution of the deposits of stibnite and cinnabar have been briefly outlined in the preceding section on the mineralogy of the ore deposits. The occurrence of both kinds of ores at a number of widely separated localities is one of the noteworthy features of this part of Nevada, and indicates that the ore deposition, in spite of its varied local manifestations, has had some ultimate dependence upon conditions regional in their prevalence. In other words, the ores show a general provincial relationship.

The antimony and quicksilver deposits, with the exception of the stibnite at Seven Troughs, are all, so far as is known, in Triassic or Jurassic rocks and are supposedly of the same age as the antimonial silver-gold ores. No facts are known, however, that absolutely rule out a Tertiary age for some of these deposits.

Nickel and cobalt deposits.—The nickel and cobalt deposits in Cottonwood Canyon consist of sulpharsenides of nickel (gersdorffite in part), tetrahedrite, and some compound of cobalt with sulphur, arsenic, or antimony, with the various oxidation products of these minerals. The ores fill small fissures in much-altered andesite or andesite breccia cut by diorite and may be genetically related to the intrusion of the latter rock. The age of the diorite is probably late Mesozoic. The age of the nickel and cobalt ores is not definitely determinable. If their deposition followed closely the intrusion of the diorite they are probably pre-Tertiary. On the other hand, the occurrence of copper both with the nickel and cobalt ores and in Tertiary andesite at the Treasure Box mine, a few miles south of Cottonwood Canyon, suggests that the nickel and cobalt deposits may be Tertiary.

CONCLUSION.

The southern portion of Humboldt County is part of a metallogenetic province characterized chiefly by the prevalence of antimonial ores of silver with numerous and widely scattered deposits of stibnite and cinnabar. There are in addition some deposits of gold-silver, copper, and nickel-cobalt ores. Ore deposition probably began immediately after the intrusion of the Triassic and Jurassic sediments in late Mesozoic time by a magma of generally granodioritic composition, comparable with that which invaded the rocks of the Sierra Nevada at the same period, and continued into the Tertiary. The known Tertiary deposits are essentially gold-silver ores and copper ores, but it is possible that some of the other types are also Tertiary.



INDEX.

A.	Page.	C.	Page.
Acknowledgments to those aiding.....	9	Calcite, occurrence and character of.....	65
Adams, G. I., on Rabbit Hole sulphur mine..	25	Carmichael, Neil, on ore of Arizona mine.....	40
Adamson, W. G., on mines.....	37, 45	Cérargyrite, occurrence and character of.....	65
Adelaide mine, description of.....	62-64	Chadbourne mine, description of.....	20
Alpha mine. <i>See</i> Ryepatch mine.		Chafey, description of.....	49
American Canyon, mines in.....	37-38	location of.....	48
Amphibole, occurrence and character of.....	64	mines at.....	11, 49-52
Anaconda prospect, description of.....	30	rocks near.....	50
Anaconda Ridge, rocks of.....	29	Chalcocite, occurrence and character of.....	65
Andesite, occurrence and character of.....	18	Chalcopyrite, occurrence and character of....	65
Annabergite, occurrence and character of....	64	Chloanthite, occurrence and character of.....	65
Antelope Canyon, mine in.....	46	Chrysocolla, occurrence and character of.....	65
Antimonial silver deposits, occurrence and character of.....	69	Cinnabar, occurrence and character of.. 30, 37, 45, 65 <i>See also</i> Quicksilver.	
Antimony, occurrence of.....	30, 41	Cleghorn Consolidated tunnel, description of. 21	
<i>See also</i> Stibnite.		Cobalt, deposits of.....	12, 48, 55-58, 71
Antimony-quicksilver deposits, occurrence and character of.....	71	Copper, occurrence and character of.....	66
Archean rocks, occurrence and character of.. 17, 31		Copper deposits, occurrence and character of.....	30, 70-71
Argentite, occurrence and character of.....	64	Coppereid, location of.....	48-49, 59
Arizona mine, description of.....	38-40	mines of.....	59-61
history of.....	10-11	Coppereid district, description of.....	59
plan of, figure showing.....	39	geology of.....	59
production of.....	11	Copper Kettle, location of.....	49
Arkose, occurrence and character of.....	19	Copper Queen claims, description of.....	30
Arsenopyrite, occurrence and character of....	64	Cornish mine, description of.....	58
Auburn mine, location of.....	49	Cottonwood Canyon, mines in..... 40, 48, 56-58	
Auld Lang Syne mine, description of..... 49, 51-52		rocks in.....	55-56
section of, figure showing.....	52	Covellite, occurrence and character of.....	66
Axinite, occurrence and character of.....	64	Cumberland shaft, location of.....	62
Azurite, occurrence and character of.....	64	Cuprite, occurrence and character of.....	66
B.		D.	
Badger claims, location of.....	21	De Soto mine, description of.....	43
Bard and Jess mine, location of.....	20	Dikes, occurrence and character of.....	19, 22
Barite, occurrence and character of.....	65	Diopside, occurrence and character of.....	66
Basalt, occurrence and character of.....	18-20	Diorite, occurrence of.....	52-53
Bell Mare mine, description of.....	58	Dixie Queen mine, description of.....	21
Bibliography of region.....	13-14	Dreamland mine, description of.....	27
Bishop lease, description of.....	51	Drown, T. M., analysis by.....	17
Black Canyon, ore in.....	46	Dun Glen. <i>See</i> Chafey.	
Black Hole mine, description of.....	50-51	E.	
Bloody Canyon, stibnite in.....	43	Eagle mine. <i>See</i> Bonanza King mine.	
Bonanza King mine, description of.....	36-37	East Range, location of.....	47
Booms, injury due to.....	13, 25	Eclipse shaft, location of.....	21
Borlasea mine, description of.....	54	Eldorado Canyon, mines in.....	45-46
Bornite, occurrence and character of.....	65	Emmons, S. F., and Hague, A., on geology of region.....	16, 17
Bradley mine, description of.....	20	Epidote, occurrence and character of.....	66
Brochantite, occurrence and character of....	65	Erythrite, occurrence and character of.....	66
Brown Palace mine, description of.....	26-27	F.	
output of.....	26	Fairview mine, description of.....	21
Buena Vista Canyon, mines in.....	38-41	ores of.....	22
Burton, B. S., on Star Canyon minerals.....	43		
Butte mine. <i>See</i> Ryepatch mine.			

	Page.		Page.
Farrell, mines at and near	15, 21	Kennedy district, geology of	52-53
Field work, extent of	7-8, 9	history of	12-13, 48
Fitting, mines at and near	36-37	location of	52
Fluorite, occurrence and character of	66	mines of	53-55
French Boys Canyon, mining in	48	Kindergarten mine, description of	20, 23-24
G.		Koipato formation, occurrence and character of	32-33
Gabbro, occurrence and character of	28-29	L.	
Galena, occurrence and character of	66	Lead, output of	10
Garnet, occurrence and character of	66	Limerick Canyon, location of	34, 35
Geology. <i>See particular districts.</i>		Literature, list of	13-14
Gersdorffite, occurrence and character of ..	57-58, 66	Louderback, G. D., on Humboldt Range ..	31, 33
Golconda shaft, location of	62	on Pahute Range	48
Gold, occurrence and character of	66-67	Lovelock mine, description of	58
<i>See also particular mines.</i>		ore of	12, 58
Gold Banks, location of	48	M.	
Golden Anchor claim, location of	27	Magnetite, occurrence and character of	67
Golden Bell tunnel, description of	49, 51	Malachite, occurrence and character of	67
Gold Note mine, description of	53-54	Manoa mine, description of	40-41
Gold placers, yield of	12	Map, index, of Nevada	8
Gold-silver deposits, occurrence and character of	69-70	Maps of region	7
Granite Mountain, rock from	52	description of	7-8
rock from, analysis of	17	Mazuma, mill at	21
Granodiorite, occurrence and character of ..	17	mines at and near	15
H.		Mazuma Hills mine, description of	20, 23-24
Hague, A., on Granite Mountain	53	ores of	22
on Humboldt Range	31-33	Metallie group, description of	30
Hague, A., and Emmons, S. F., on geology of region	16	Minerals, occurrence and character of	64
Hague, J. D., on smelting	10	Mines, distribution and development of. <i>See</i> <i>particular districts, mines, etc.</i>	
Harris lease, location of	21	Mining, development of, history of	10-13
Hayes-Mazuma mine, description of	20	Mining districts, names of	7
Hematite, occurrence and character of	67	Morrison mine. <i>See</i> Imlay mine.	
Hendra group, history of	49	Munroe Hill, mines on	49, 51
Hidden Treasure mine, description of	54-55	N.	
Hot springs, deposits of	57	Nevada-Union mine, description of	40
Humboldt County, investigation in	7	Nickel, deposits of	12, 48, 57-58, 71
Humboldt district, organization of	10	Nickel mine, description of	57-58
Humboldt Lake Range, location of	31	North Pole claim, location of	21
rocks of	33	O.	
Humboldt Queen mine, description of	33-35	Obsidian, occurrence and character of	19
rocks at, sections of, figures showing	34, 35	Oreana, smelters at	10
Humboldt Range, geology of	31-33	Ore deposits, mineralogy of	64-68
mines of	33-46	types of	68-71
ores of	46-47	<i>See also particular districts.</i>	
Hyatt, A., and Smith, J. P., on Humboldt Range	32	Orofino Canyon, location of	48
I.		Orthoclase, occurrence and character of	67
Imlay mine, description of	46	P.	
Imperial mine, description of	55	Pahute Range, description of	47-49
Index map of Nevada	8	geology of	47-48
Itinerary, description of	9	mining in	48-49
J.		Panther Canyon, mine in	44
Jackson Canyon, mines in	41	Pfluger mine, description of	40-41
Jamesonite, occurrence and character of	67	Placers, gold, importance of	12
Jarosite, occurrence and character of	67	Pre-Tertiary rocks, occurrence and character of	16-17
Jurassic rocks, occurrence and character of ..	16, 26, 28, 31, 32, 33, 47, 50	Proustite, occurrence and character of	67
K.		Providence tunnel, location of	21
Kamma Mountains, mines of	25	Pyrrhotite, occurrence and character of	67
K. and R. mine, description of	54-55		

	Page.		Page.
Quicksilver. <i>See also</i> Cinnabar.		Silver, occurrence and character of.....	67
Quicksilver-antimony deposits, occurrence and character of.....	71	<i>See also particular mines; Antimonial silver; Gold-silver deposits.</i>	
R.			
Raymond, R. W., on Arizona mine.....	39	Silver Range, location of.....	47
on smelting.....	10	Skea, D. H., on Fairview ores.....	24
on Star City.....	10	Smelters, building of.....	10
Reagan mine, description of.....	20, 23-24	Smith, J. P., and Hyatt, A., on Humboldt Range.....	32
ores of.....	22	Sonoma Range, description of.....	62-64
Red Butte, description of.....	27	history of.....	62
Red Butte district, copper ores of.....	30	mines of.....	62-64
description of.....	27	Sou Springs, description of.....	55
geology of.....	28-29	Sphalerite, occurrence and character of.....	67
history of.....	28	Spring Valley. <i>See</i> Fitting.	
Redeemer claim, rocks at.....	30	Star Canyon, mines in and near.....	41-43
Reid, J. T., on Copperoid mine.....	60-61	Star City, history of.....	10
on Copper Kettle ores.....	49	Star Peak, altitude of.....	31
Rhyolite, occurrence and character of.....	19, 26	Star Peak formation, occurrence and character of.....	31-33, 41-42, 50
Rock Hill Canyon, location of.....	48	section of.....	31
Rocks, nomenclature of, changes in.....	8	Star Peak Range, end of, mines at.....	46
Rosebud, description of.....	25	structure of.....	33
Rosebud district, description of.....	25-26	Stibnite, occurrence and character of.....	43, 46, 68
future of.....	26	<i>See also</i> Antimony.	
geology of.....	26	Stillwater Range, location of.....	47
history of.....	25	Sulphur, mines of.....	25
ores of.....	26-27	occurrence and character of.....	68
Ruby Cinnabar mine, description of.....	45-46	T.	
Ryepatch mine, description of.....	43-45	Table Mountain Range, location of.....	47
production of.....	12, 44	Tertiary rocks, occurrence and character of.....	18-20, 57
section of, figure showing.....	44	Tetrahedrite, occurrence and character of.....	68
S.			
Sacramento Canyon, location of.....	34	Thornton prospect, description of.....	46
Sandifer mine, location of.....	20	Tiptop, location of.....	48
Schaller, W. T., on nickel ore.....	57-58	Topography. <i>See particular districts.</i>	
Seven Troughs, mills at.....	21-22	Tourmaline, occurrence and character of.....	68
mines at.....	15, 20	Treasure Box mine, description of.....	58
ores near.....	22-23	Triassic rocks, occurrence and character of.....	25, 31-32, 46, 47, 53, 55, 59
Seven Troughs district, description of.....	14-15	Tuffs, occurrence and character of.....	19
future of.....	25	Tyler mine, location of.....	20
geology of.....	15-20	U.	
history of.....	15	Unionville, mines at and near.....	10-11, 38-41
mines of.....	20-22	V.	
ores of.....	22-25	Vernon, mines at and near.....	15, 21
topography of.....	15	Vesuvianite, occurrence and character of.....	68
towns of.....	15	Volcanic rocks, occurrence and character of.....	18
Seven Troughs Mountains, description of.....	15	W.	
Seven Troughs Tomboy Co. mine, description of.....	21	Wheeler mine, location of.....	38, 40
Shady Run, location of.....	49	White Alps claim, description of.....	26
Shamel, C. H., on mining law.....	39	White Cloud Canyon, mine in.....	59
Sheba mine, description of.....	42-43	Wild Bull claim, description of.....	21
history of.....	10	Wilujia mine, description of.....	20
rocks near.....	33	Wisker, A. L., on Hendra group.....	49
section of, figure showing.....	42		
Signal Peak Mining Co., claim of.....	21		
Signal tunnel, description of.....	21		