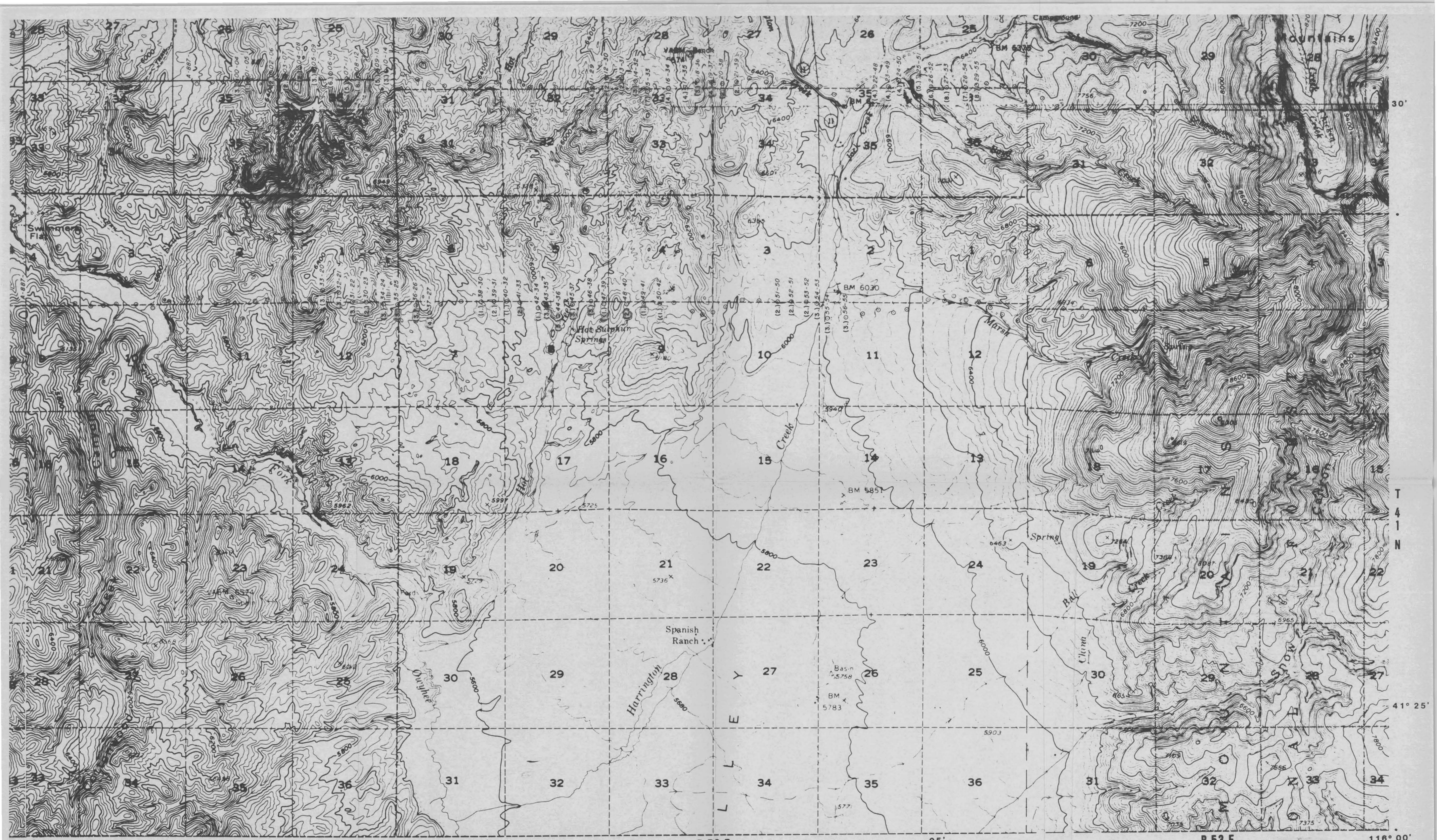


15' R 51 E 10' R 52 E 05' R 53 E Lines VII, IX 41° 25' 16' 00"

PRELIMINARY
COPY

AMAX CORPORATION INC. 100 WEST 50TH AVENUE, ANAHEIM, CALIF. 92805
GEOTHERMAL BRANCH
Ag TUSCARORA - NEVADA Soil Geochemistry
Source: AMAX Survey, 1979 3-10-80



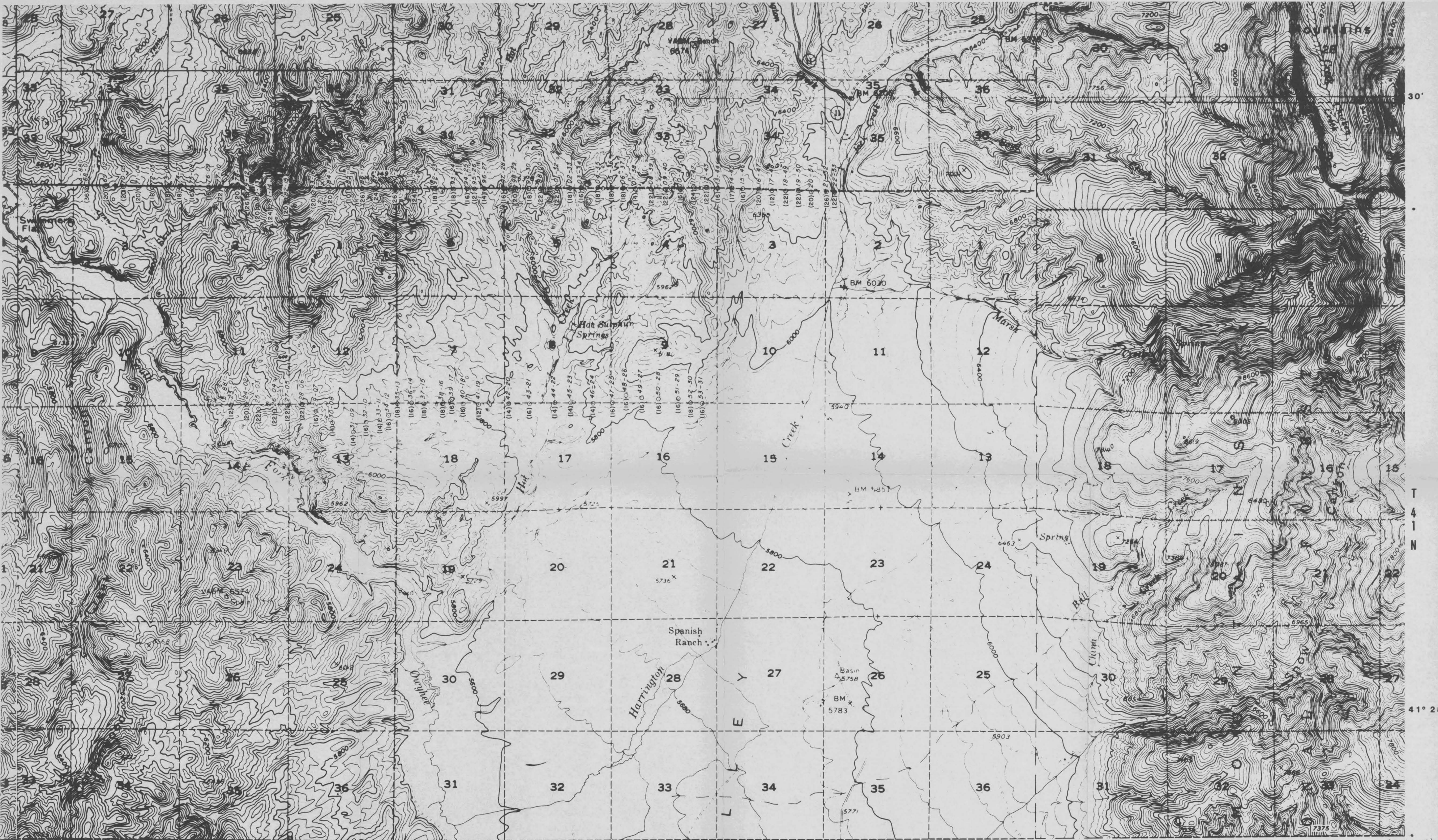
PRELIMINARY COPY

AMAX EXPLORATION, INC.
 1100 WEST 44TH AVENUE, WHEAT RIDGE, COLORADO 80033

GEO THERMAL BRANCH

Sb
TUSCARORA - NEVADA
Soil Geochemistry

Source: AMAX Survey, 1979 4-80



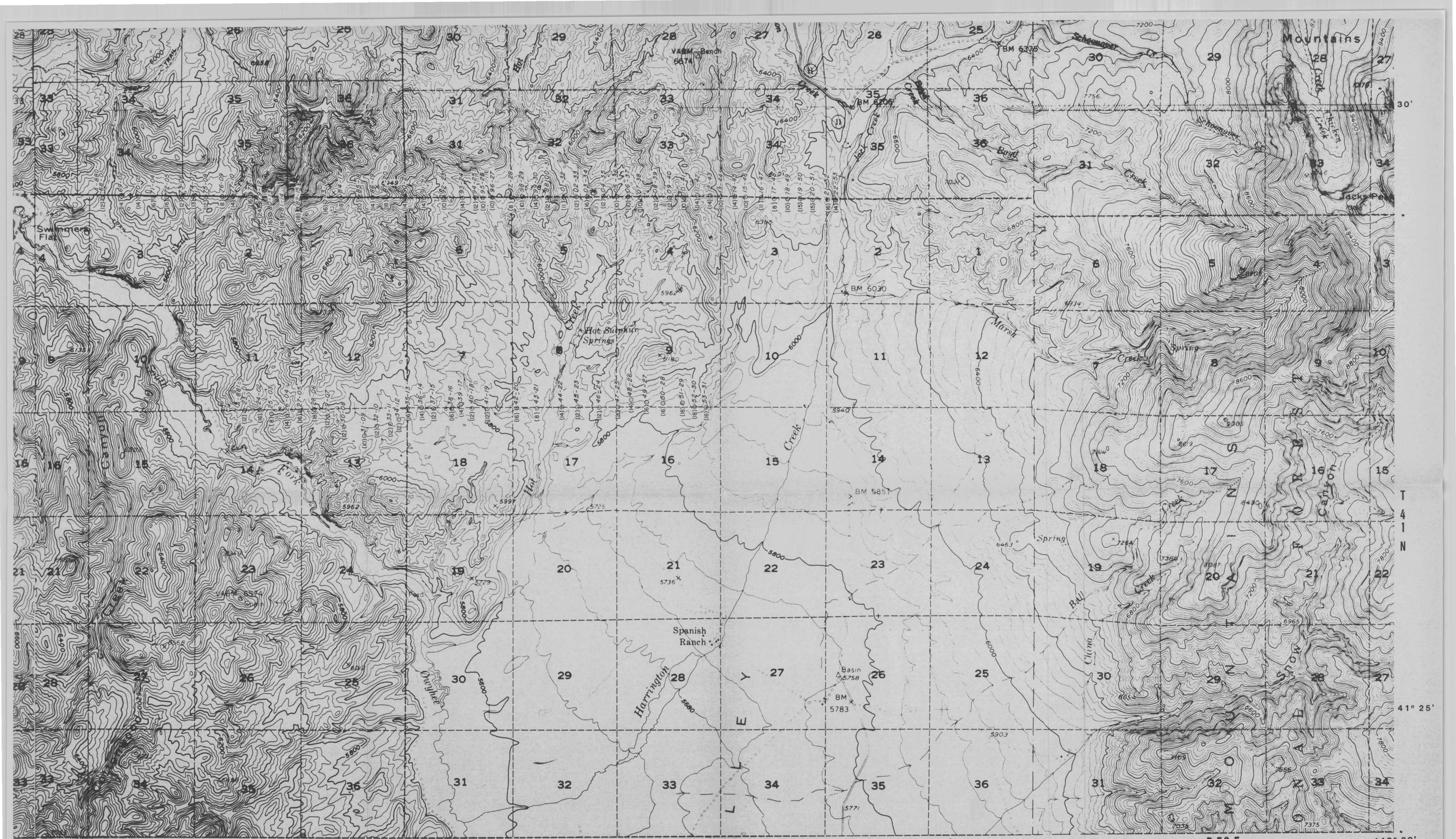
15° R 51 E 10° R 52 E 05° R 53 E 41° 25' 41° 00'

PRELIMINARY
COPY

AMAX CORPORATION INC.
GEO THERMAL BRANCH

Pb
TUSCARORA - NEVADA
Soil Geochemistry

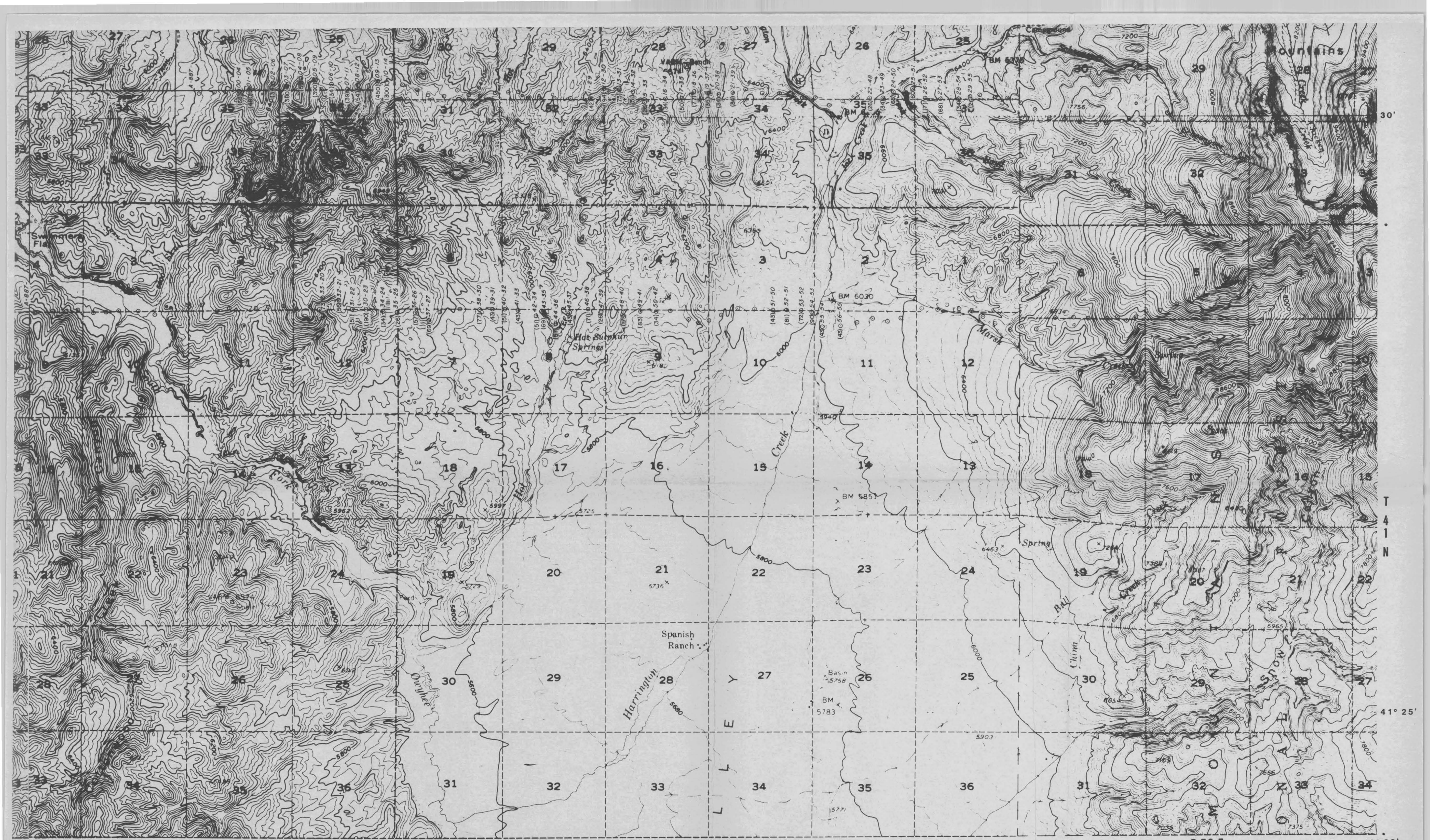
Source: AMAX Survey, 1979 3-10-80



15' R 51 E 10' R 52 E 05' R 53 E Lines VII, IX 116° 00' 41° 25'

PRELIMINARY
COPY

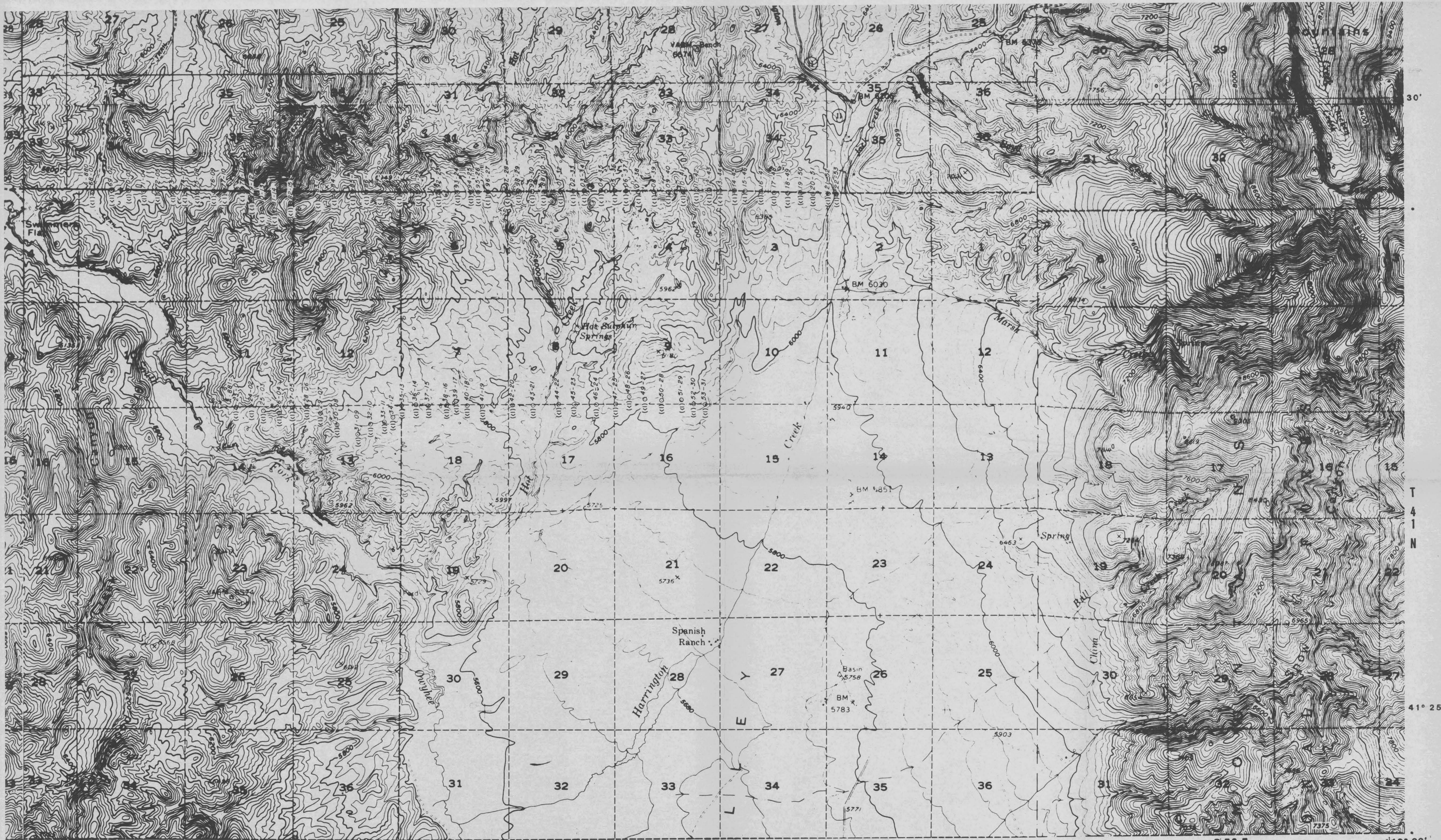
AMAX EXPLORATION, INC.	
GEOHERMAL BRANCH	
Ni	
TUSCARORA - NEVADA	
Soil Geochemistry	
Source: AMAX Survey, 1979	3-10-80



15' R 51 E 10' R 52 E 05' R 53 E 116° 00'

PRELIMINARY COPY

AMAX EXPLORATION, INC.
 GEOTHERMAL BRANCH
 NH₃
 TUSCARORA - NEVADA
 Soil Geochemistry
 Source: AMAX Survey, 1979



15' R 51 E 10' R 52 E 05' R 53 E Lines VII, IX 41° 25' 16' 00'

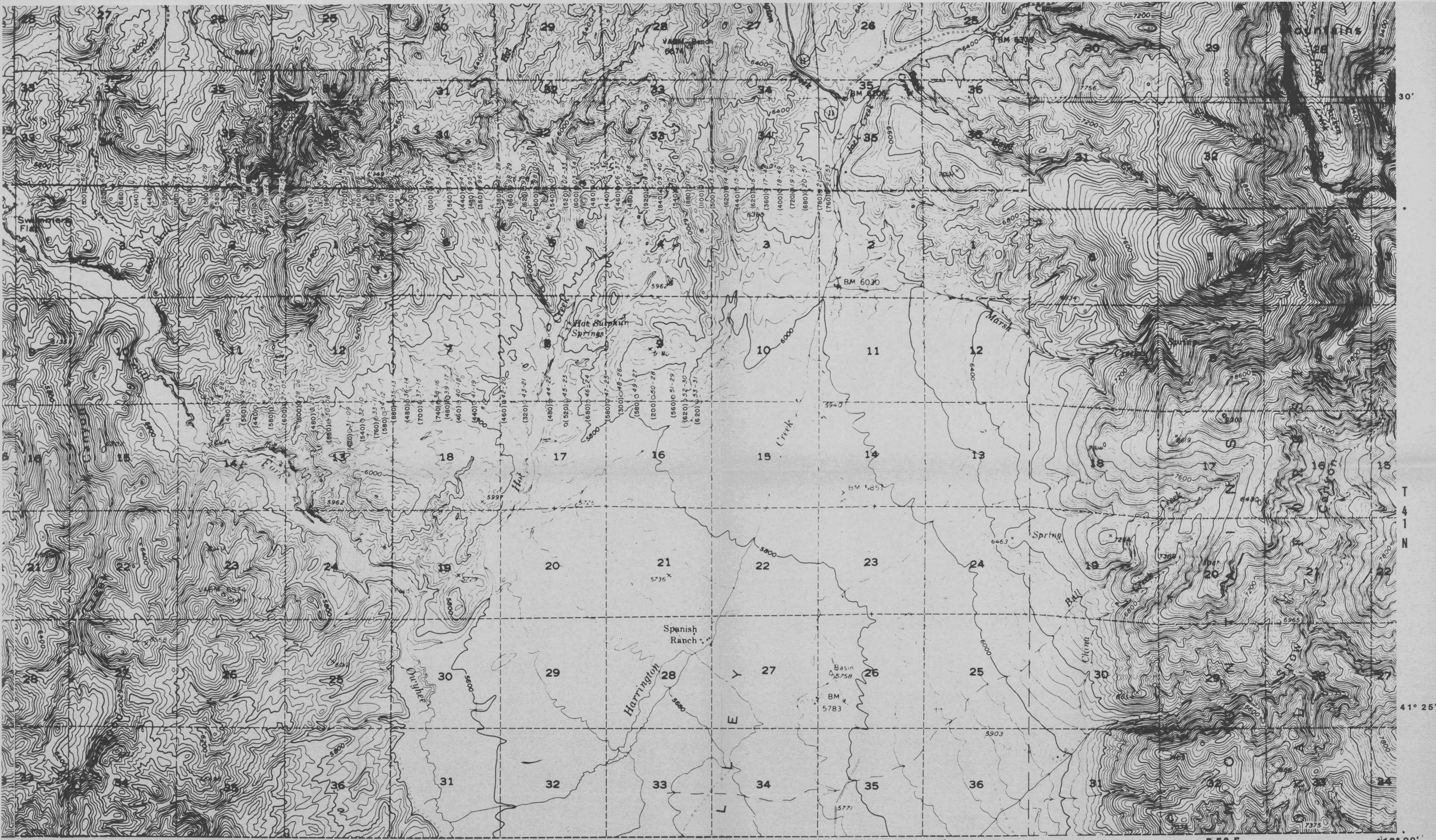
PRELIMINARY COPY

AMAX EXPLORATION, INC.
7700 WEST 84TH AVENUE # WEST 84TH
DENVER, COLORADO 80231
303-751-1000

GEOTHERMAL BRANCH

Mo
TUSCARORA - NEVADA
Soil Geochemistry

Source: AMAX Survey, 1979 3-10-80

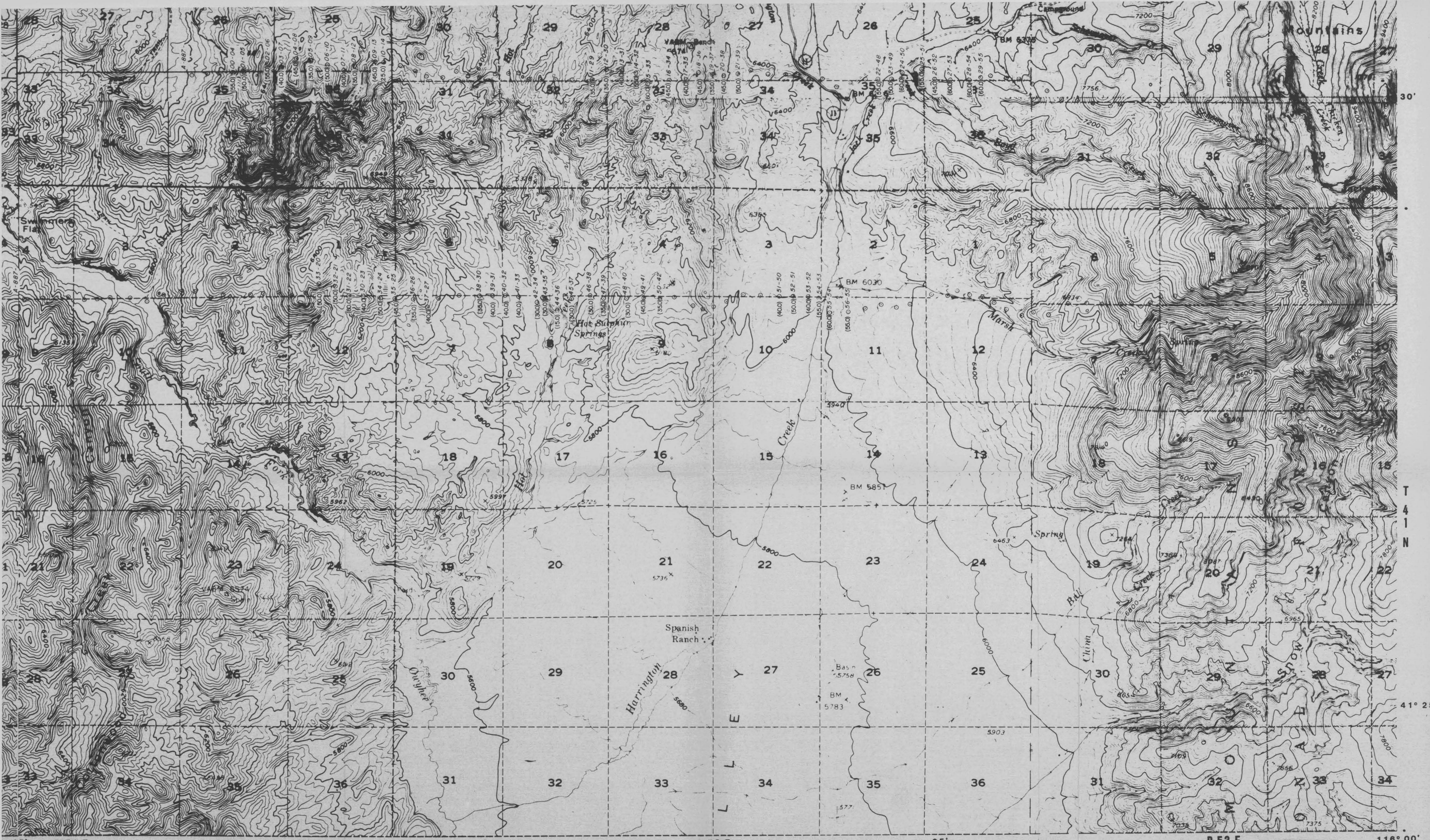


15' R 51 E 10' R 52 E 05' R 53 E Lines VII, IX 116° 00' 41° 25'

PRELIMINARY COPY

AMAX CORPORATION, INC.
 GEOTHERMAL BRANCH
 Mn
 TUSCARORA - NEVADA
 Soil Geochemistry
 Source: AMAX Survey, 1979 3-10-80

VII-17



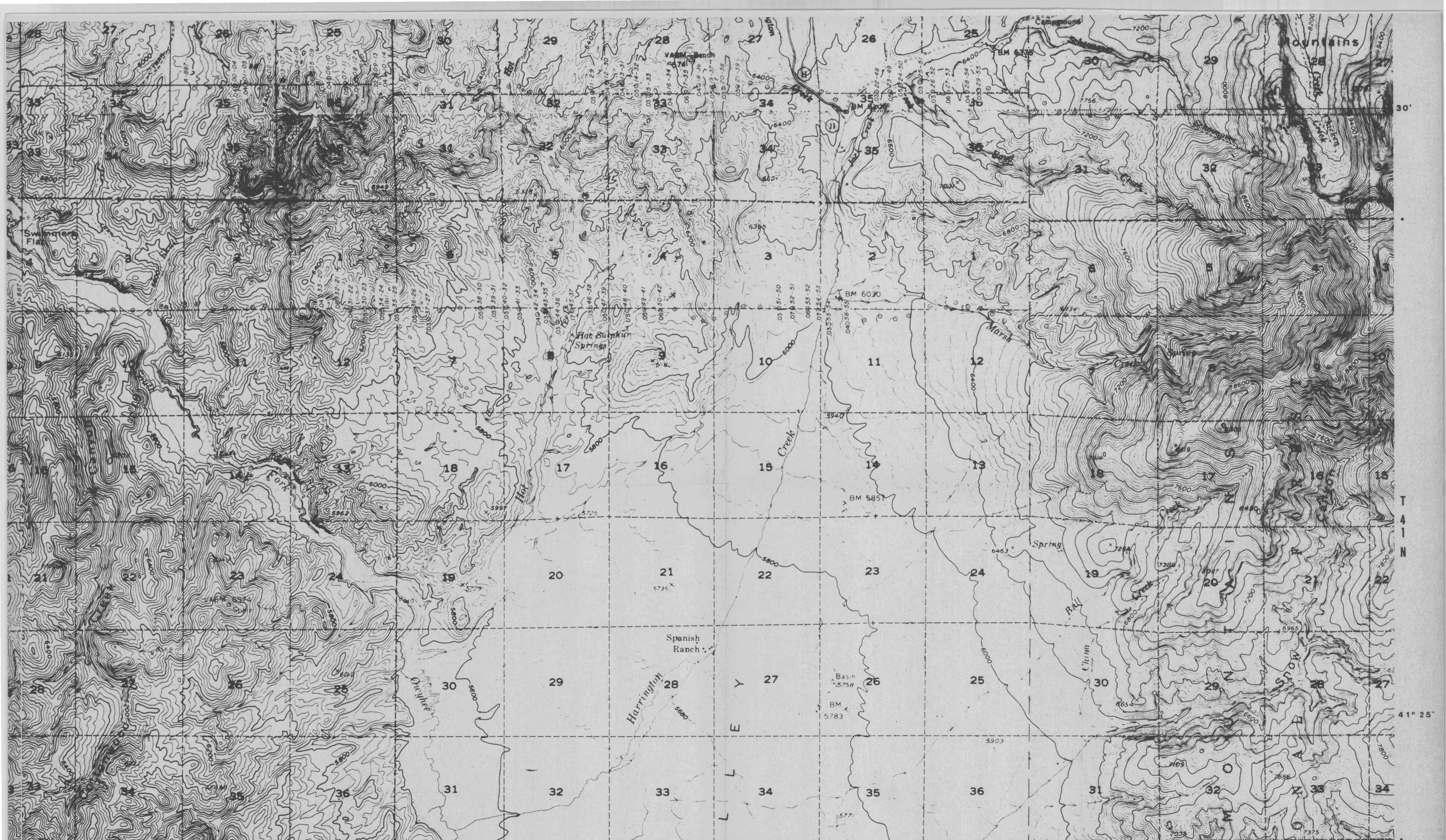
15' R 51 E 10' R 52 E 05' R 53 E 116° 00'

AMAX EXPLORATION, INC.
100 WEST GARDNER BLVD. SUITE 1000 LAS VEGAS, NEVADA 89101
GEO THERMAL BRANCH

TUSCARORA - NEVADA
Soil Geochemistry

Source: AMAX Survey, 1979 4-80

PRELIMINARY COPY



PRELIMINARY
COPY

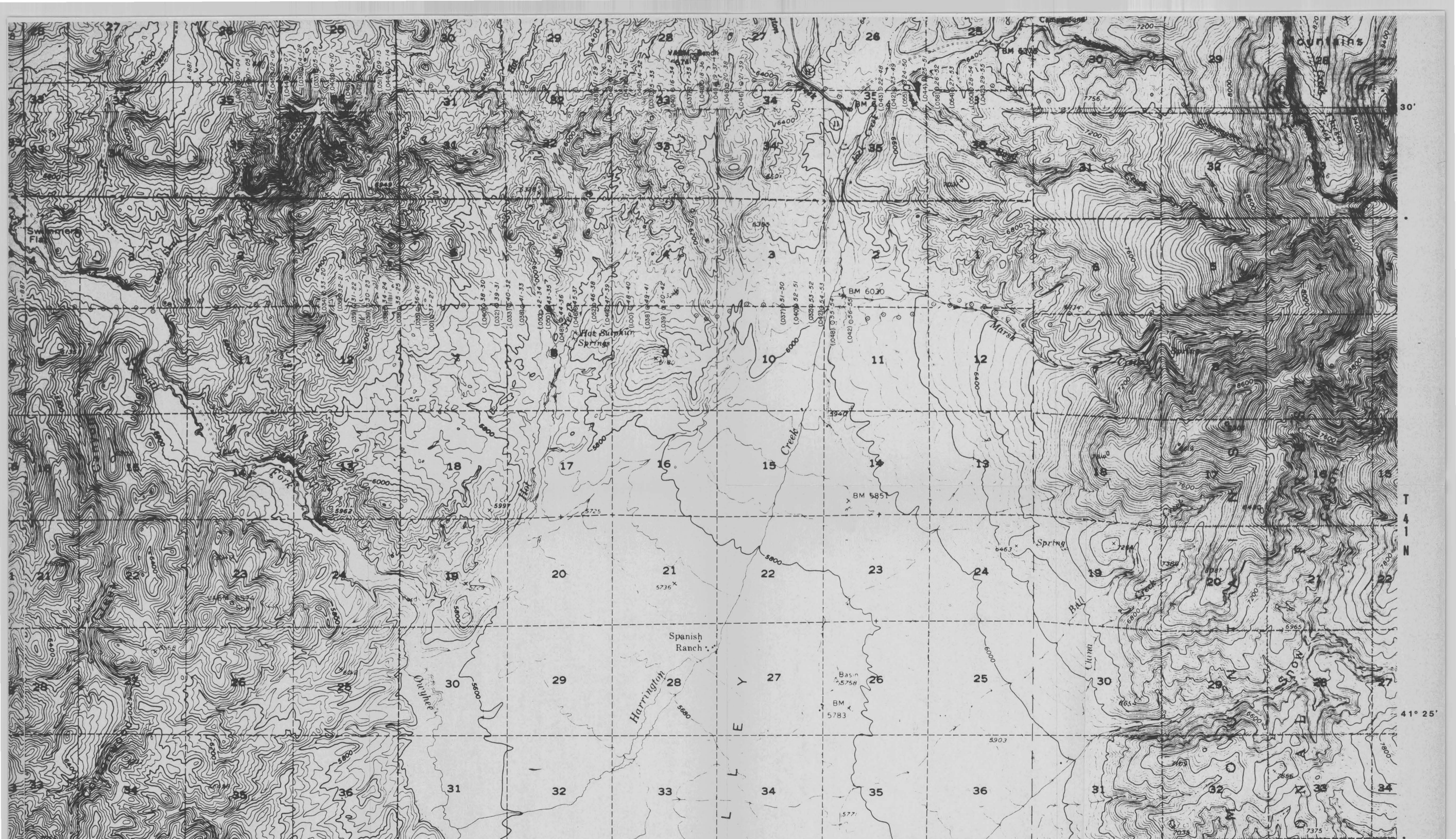
AMAX EXPLORATION, INC.
INCORPORATED IN CALIFORNIA
 100 WEST BAY STREET, SUITE 100, OAKLAND, CALIFORNIA 94612

GEOHERMAL BRANCH

Hg

TUSCARORA - NEVADA
 Soil Geochemistry

Source: AMAX Survey, 1973 4-80



15' R 51 E 10' R 52 E 05' R 53 E Lines V, IX 116° 00' 41° 25'

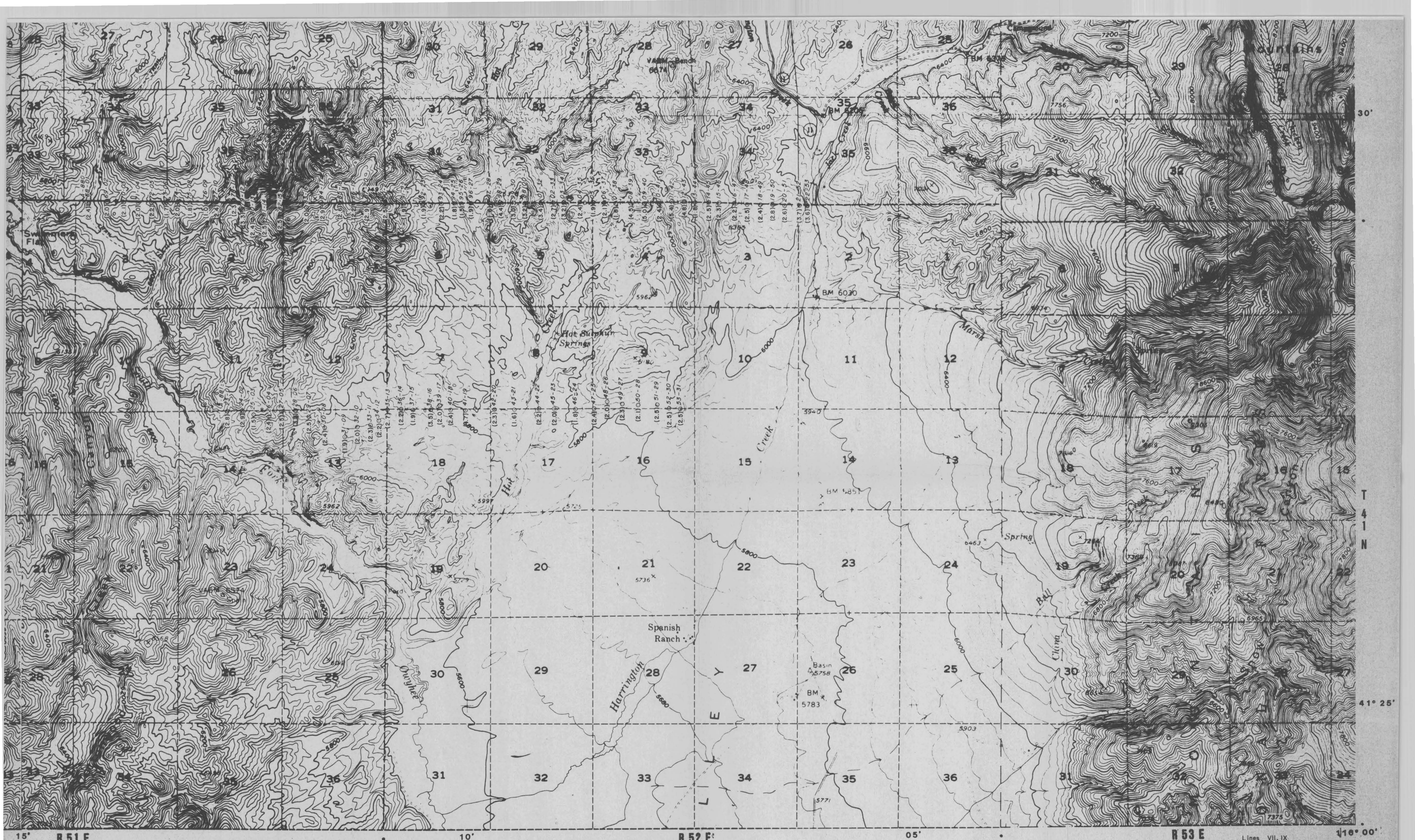
PRELIMINARY COPY

AMAX EXPLORATION, INC.
1100 WEST 34TH AVENUE, SUITE 1000, DENVER, COLORADO 80202

GEOTHERMAL BRANCH

TUSCARORA - NEVADA
Soil Geochemistry

Source: AMAX Survey, 1979 4-80

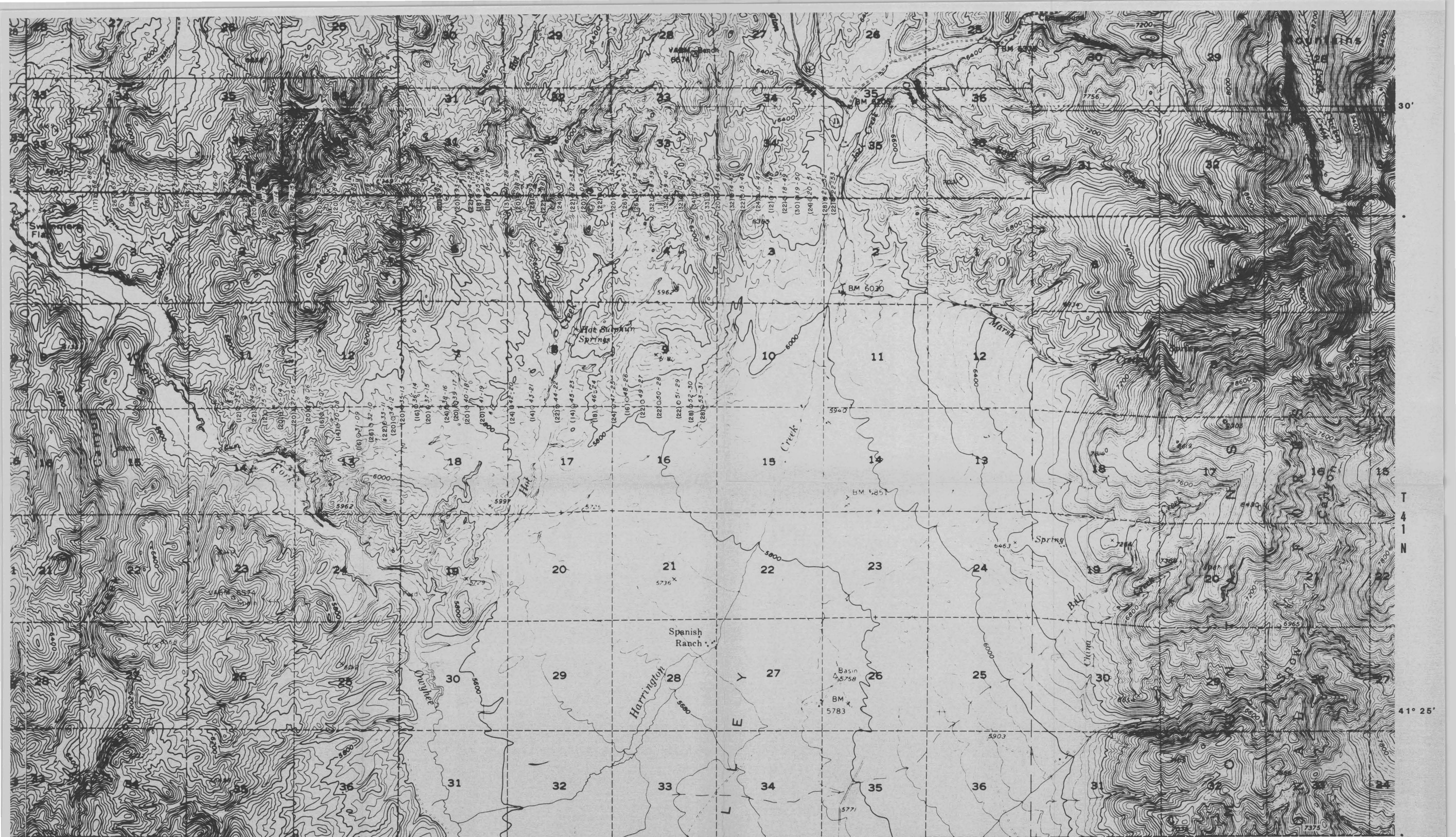


15' R 51 E 10' R 52 E 05' R 53 E 116° 00'

AMAX EXPLORATION INC.
 GEOTHERMAL BRANCH
 Fe
 TUSCARORA - NEVADA
 Soil Geochemistry
 Source: AMAX Survey, 1979

PRELIMINARY COPY

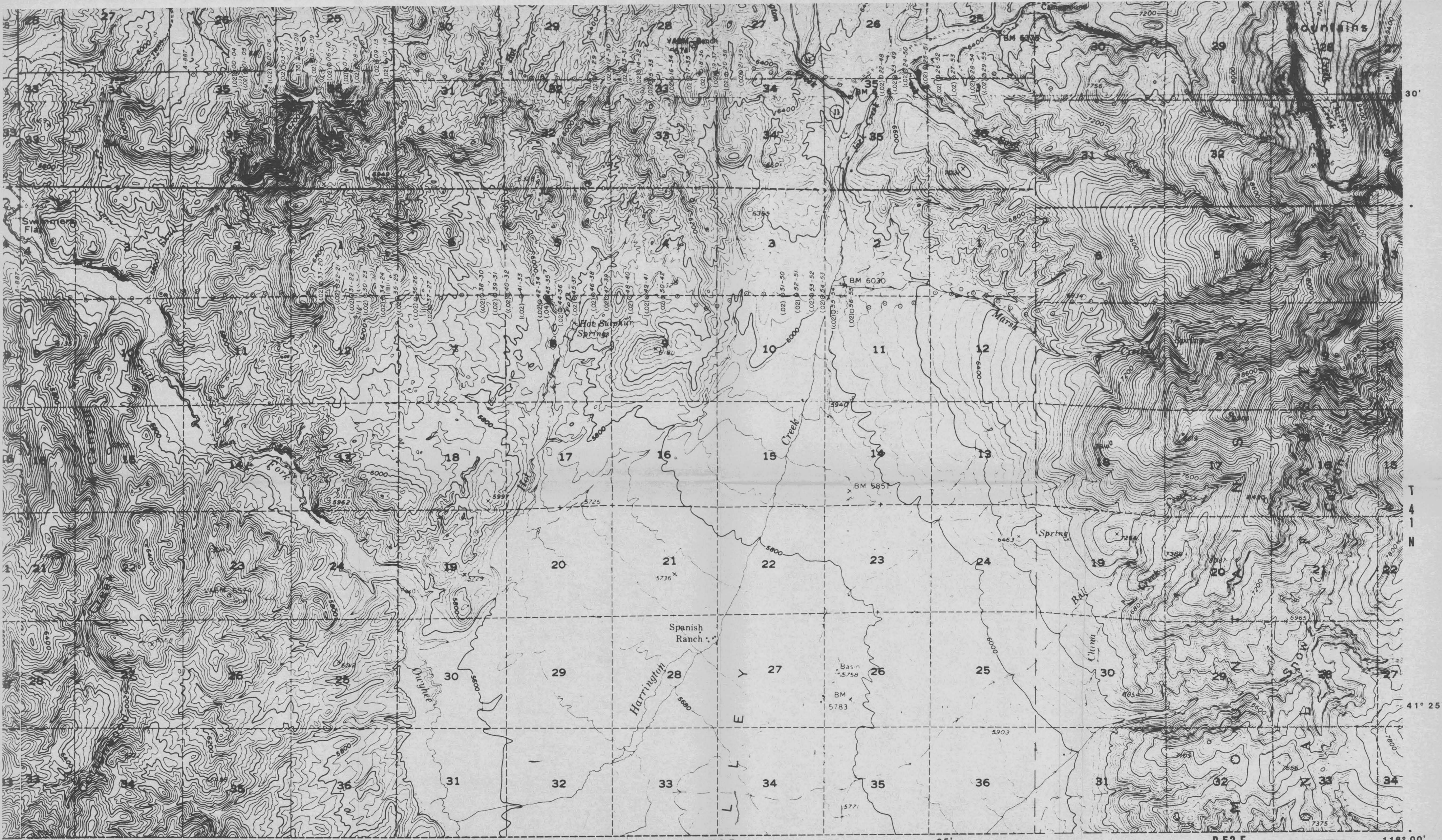
VII-17



15' R 51 E 10' R 52 E 05' R 53 E 41° 25' 16° 00'

PRELIMINARY COPY

AMAX EXPLORATION, INC.
GEO THERMAL BRANCH
Cu
TUSCARORA - NEVADA
Soil Geochemistry
Source: AMAX Survey, 1979



15' R 51 E 10' R 52 E 05' R 53 E Lines V, IX 116° 00'

PRELIMINARY COPY

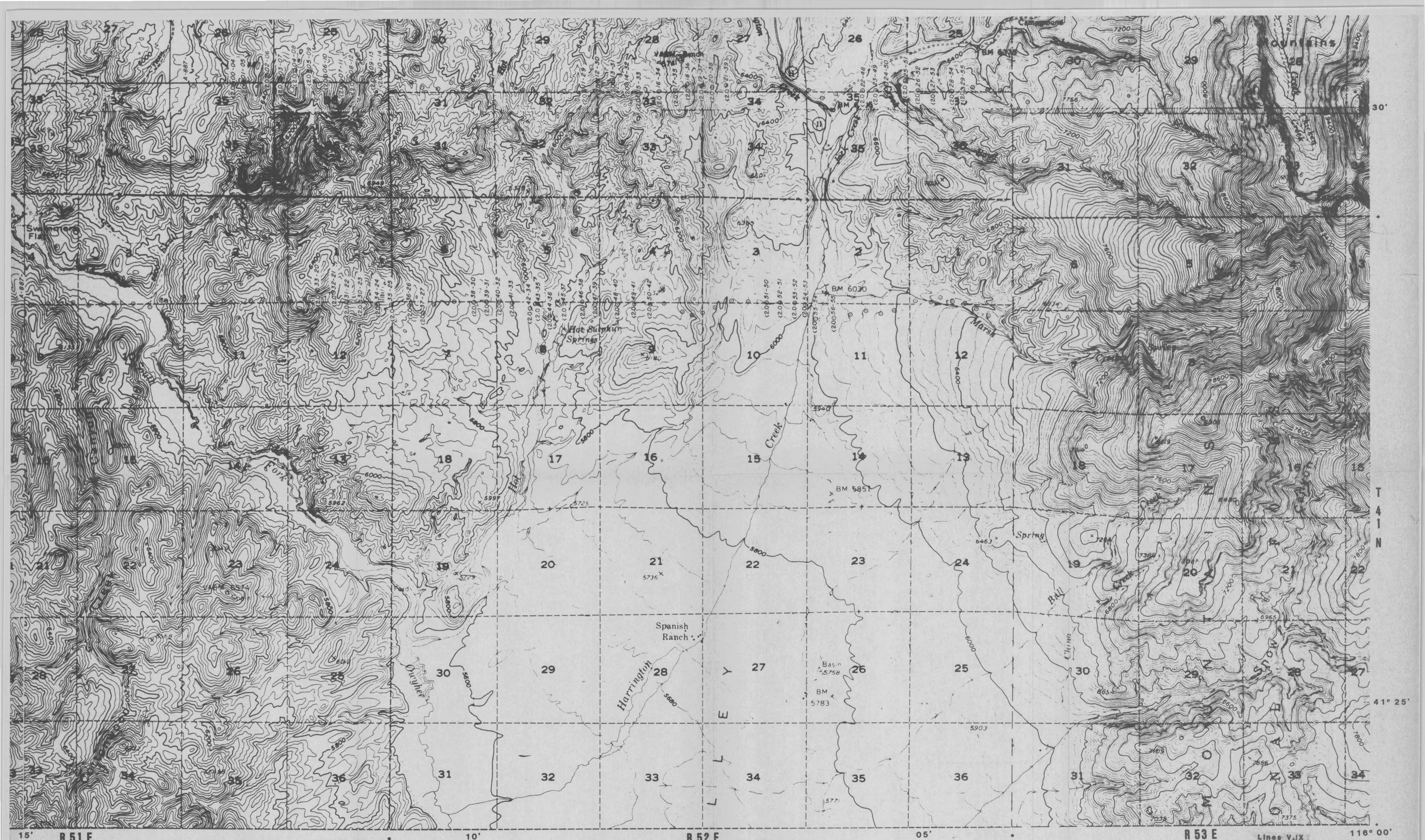
AMAX EXPLORATION, INC.
1100 WEST 84TH AVENUE WHEAT RIDGE, COLORADO 80033

GEO THERMAL BRANCH

CI

TUSCARORA - NEVADA
 Soil Geochemistry

Source: AMAX Survey, 1979 4-80



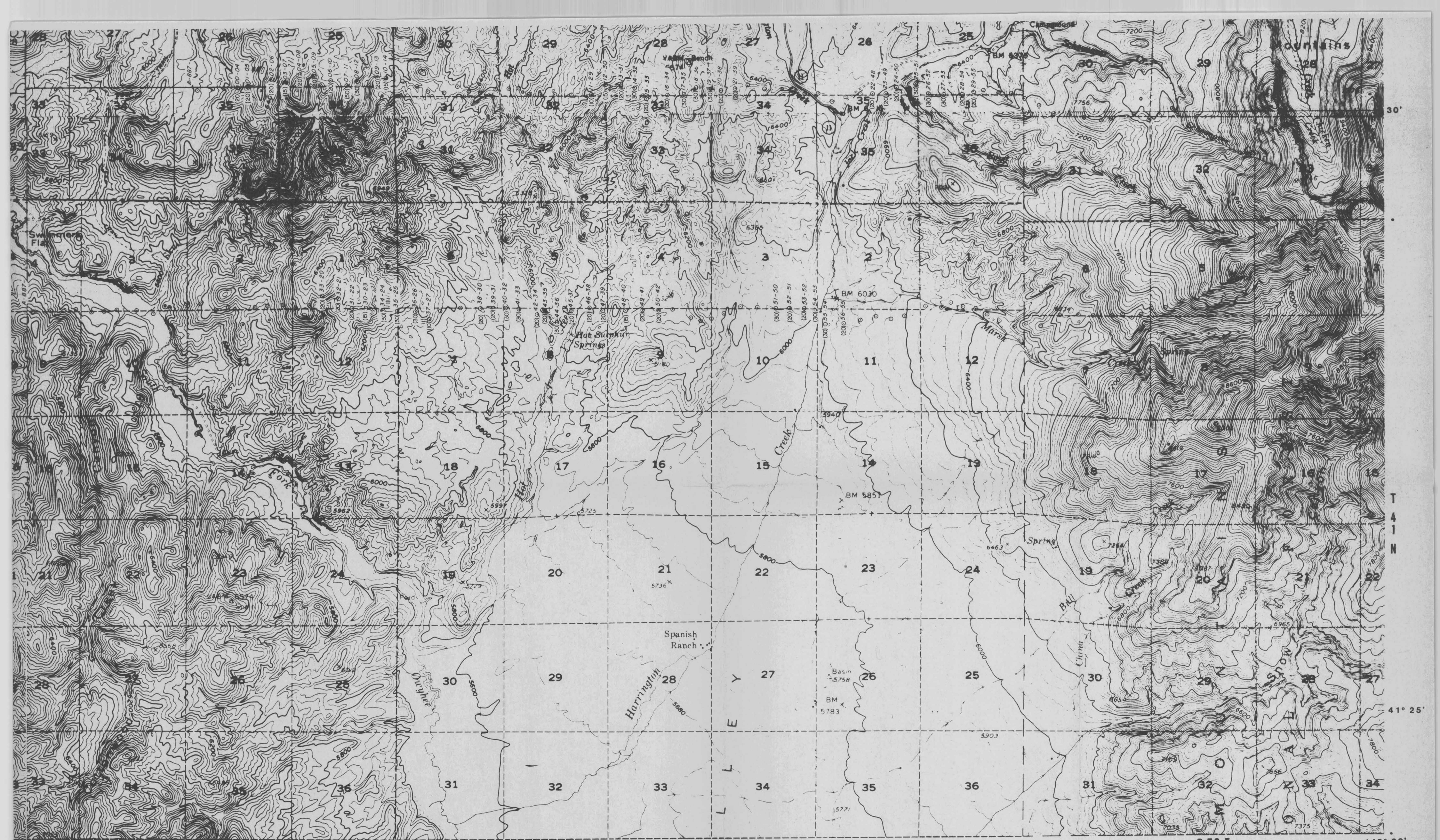
PRELIMINARY
COPY

AMAX EXPLORATION, INC.
1700 WEST 84TH AVENUE, DENVER, COLORADO 80231

GEOHERMAL BRANCH

Bi
TUSCARORA - NEVADA
Soil Geochemistry

Source: AMAX Survey, 1979



15' R 51 E 10' R 52 E 05' R 53 E Lines V, IX 116° 00'

PRELIMINARY COPY

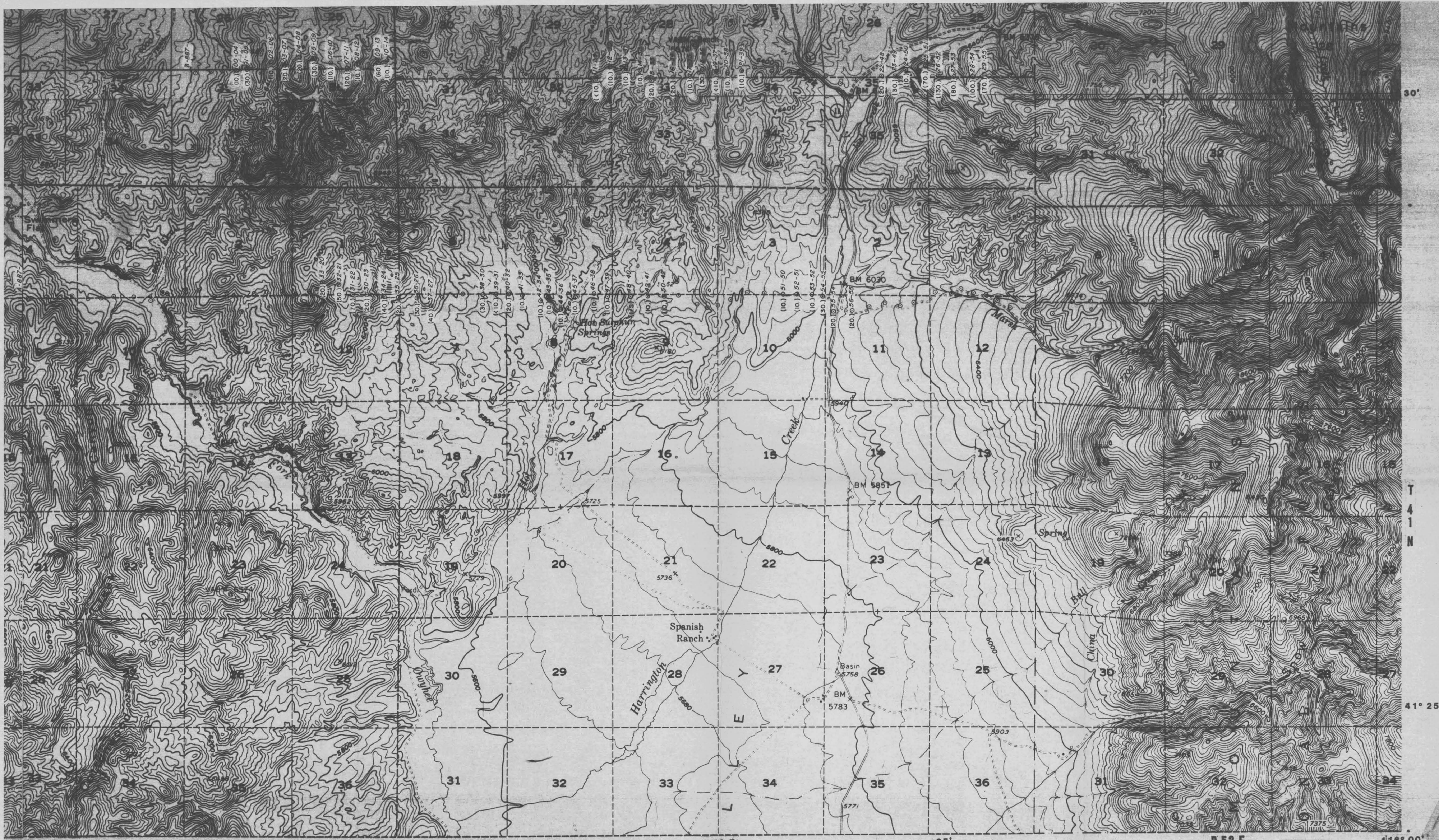
AMAX EXPLORATION, INC.
 1100 WEST 84TH AVENUE WHEAT RIDGE, CO. 80033

GEO THERMAL BRANCH

B

TUSCARORA - NEVADA
 Soil Geochemistry

Source: AMAX Survey, 1979 4-80



15° R 51 E 10° R 52 E 05° R 53 E Lines V, IX 41° 25' 30'

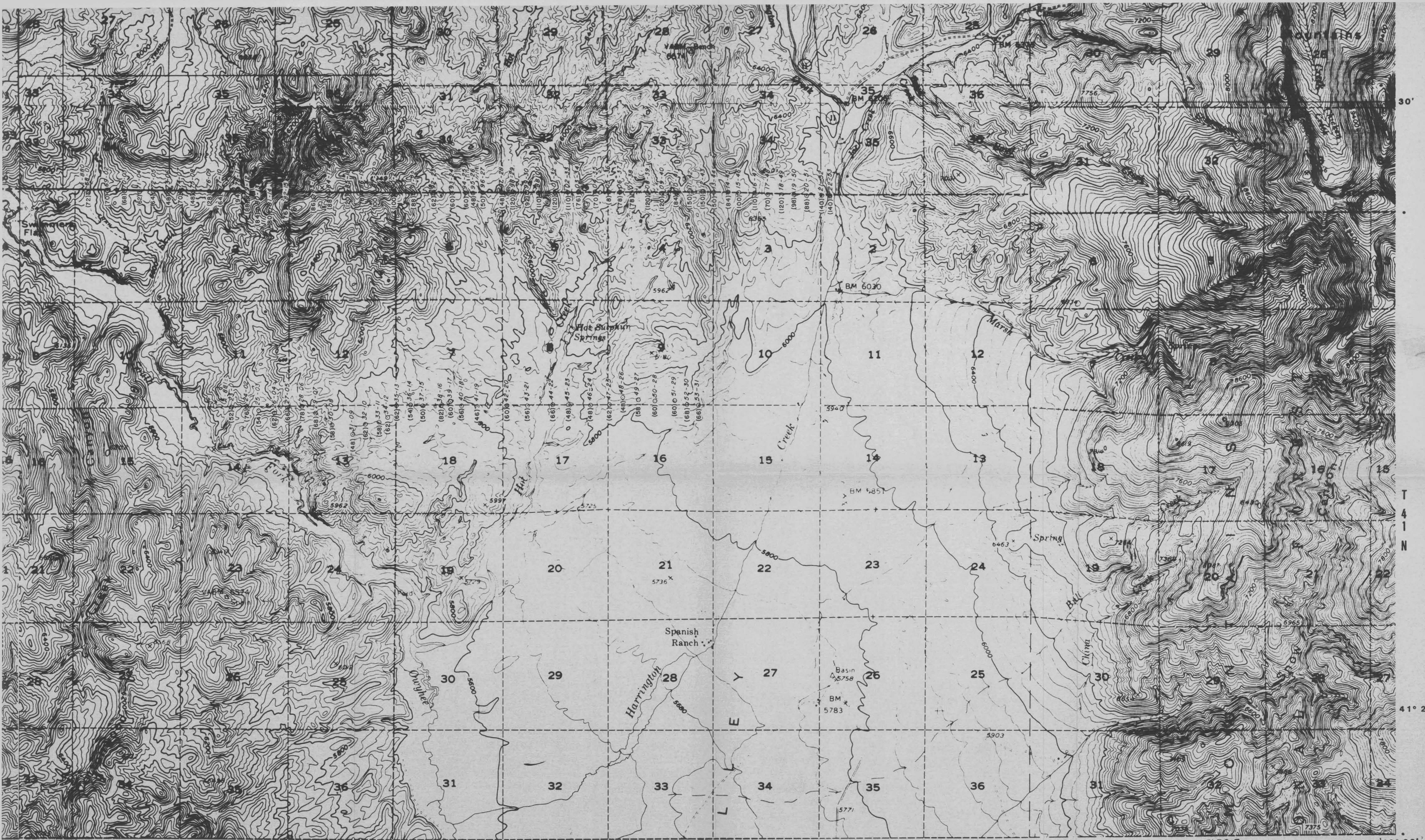
PRELIMINARY COPY

AMAX EXPLORATION, INC.
 A SUBSIDIARY OF AMAX INC. 7100 WEST 44TH AVENUE, WHEAT RIDGE, COLORADO 80033

GEO THERMAL BRANCH

As
TUSCARORA - NEVADA
Soil Geochemistry

Source: AMAX Survey, 1979 4-80



15' R 51 E 10' R 52 E 05' R 53 E Lines VII, IX 41° 00' 41° 25'

PRELIMINARY COPY

AMAX EXPLORATION, INC.
AMERICAN MOUNTAIN EXPLORATION COMPANY

GEOTHERMAL BRANCH

Zn
TUSCARORA - NEVADA
 Soil Geochemistry

Source: AMAX Survey, 1979 3-10-80