

15' R 51 E 10' R 52 E 05' R 53 E Lines VII, IX 41° 25' 16° 00'

PRELIMINARY COPY

AMAX EXPLORATION INC.
GEO THERMAL BRANCH
Ag
TUSCARORA - NEVADA
Soil Geochemistry
Source: AMAX Survey, 1979 3-10-80



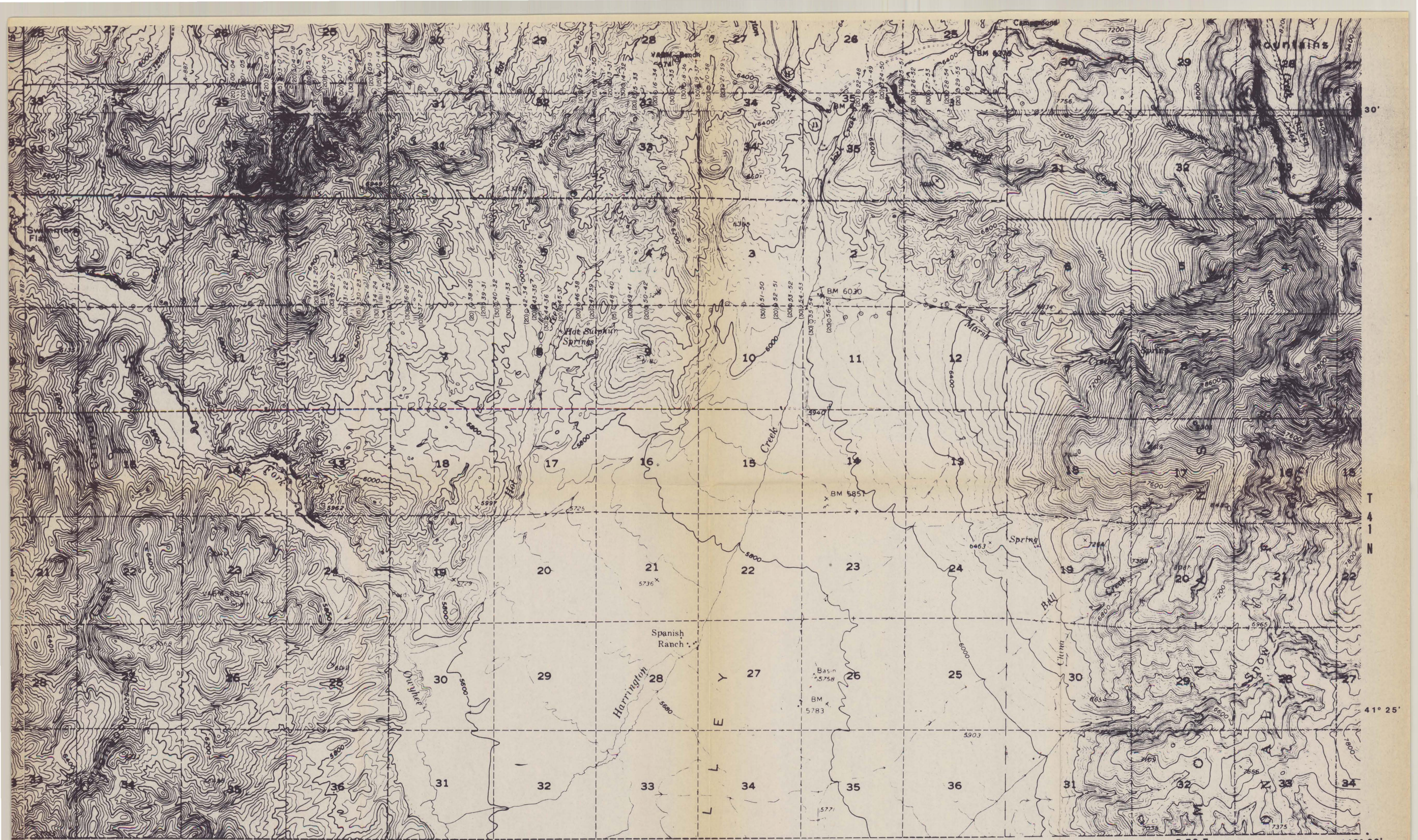
15' R 51 E 10' R 52 E 05' R 53 E Lines V, IX 16° 00'

AMAX EXPLORATION, INC.
A SUBSIDIARY OF AMAX INC. 7100 WEST 44TH AVENUE, WHEAT RIDGE, COLORADO 80033
GEO THERMAL BRANCH

As
TUSCARORA - NEVADA
Soil Geochemistry

Source: AMAX Survey, 1979 4-80

PRELIMINARY COPY



15' R 51 E 10' R 52 E 05' R 53 E Line V, IX 116° 00'

PRELIMINARY COPY

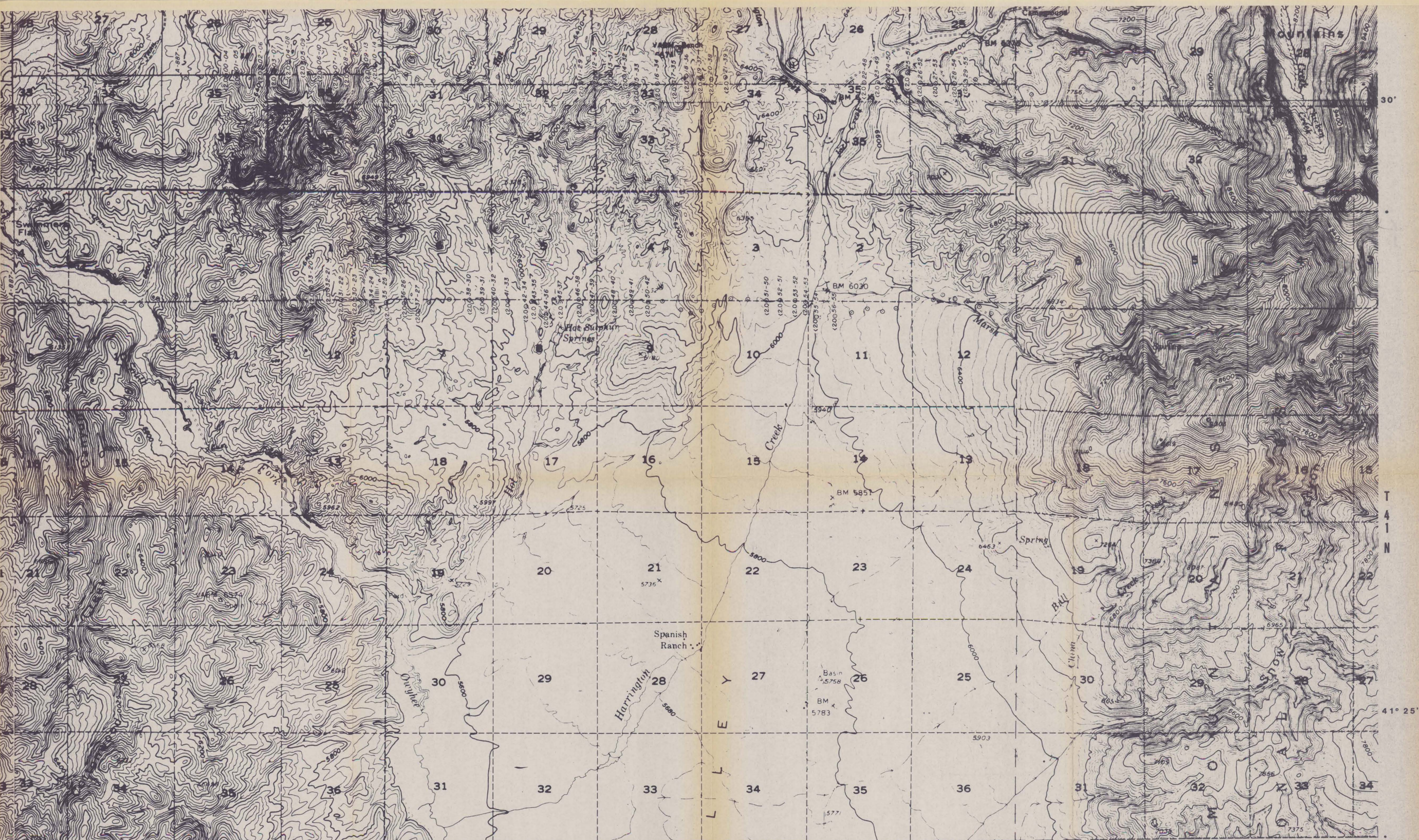
AMAX EXPLORATION, INC.
1100 WEST 54TH AVENUE, WHEAT RIDGE, COLORADO 80033

GEOHERMAL BRANCH

B

TUSCARORA - NEVADA
Soil Geochemistry

Source: AMAX Survey, 1979 4-80



15' R 51 E 10' R 52 E 05' R 53 E Lines V, IX 116° 00'

PRELIMINARY COPY

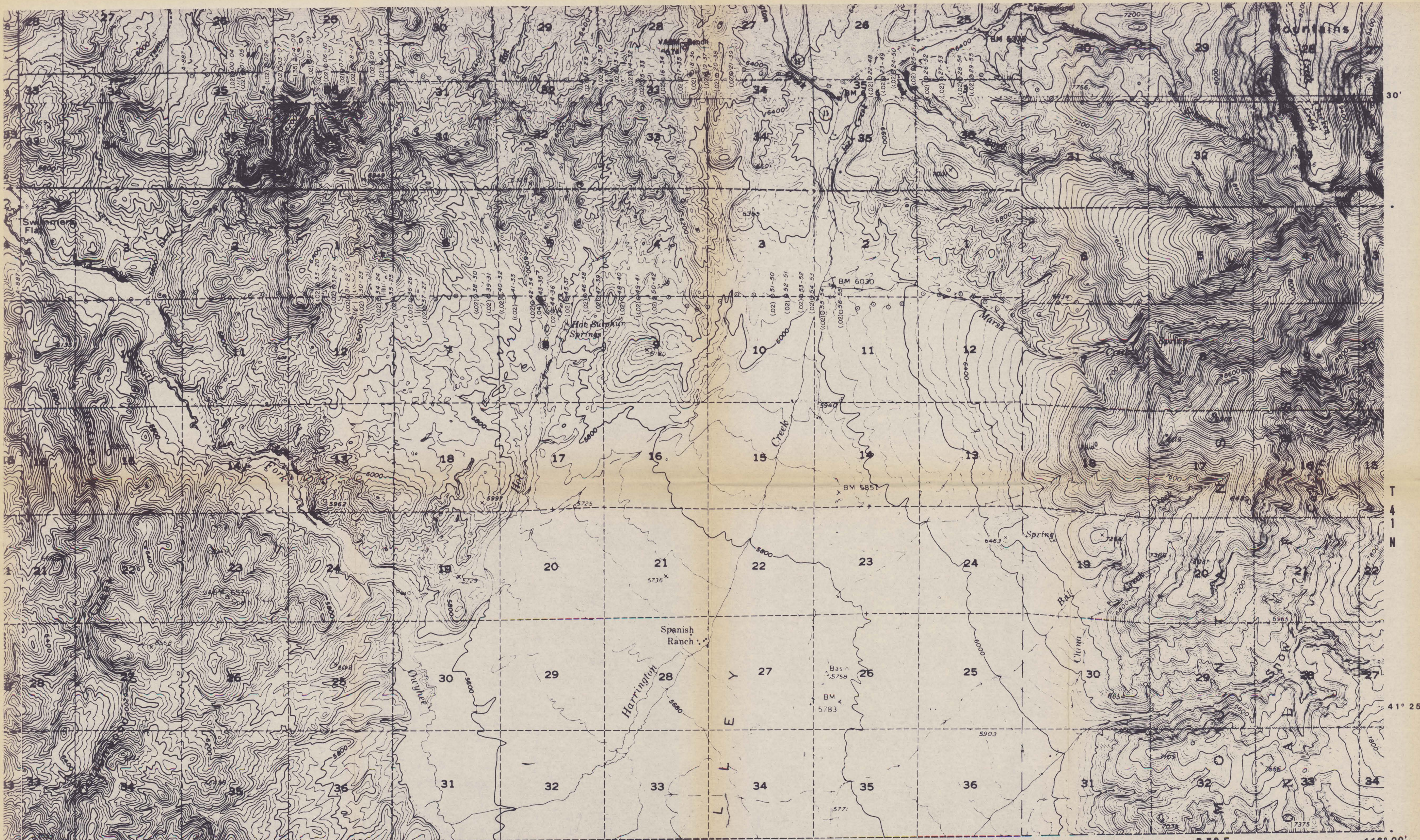
AMAX EXPLORATION INC.
 1100 WEST 84TH AVENUE, DENVER, COLORADO 80231

GEOTHERMAL BRANCH

BI

TUSCARORA - NEVADA
 Soil Geochemistry

Source: AMAX Survey, 1979 4-80



15' R 51 E 10' R 52 E 05' R 53 E Lines V, IX 116° 00'

PRELIMINARY COPY

AMAX EXPLORATION INC.
100 WEST 84TH AVENUE WHEAT RIDGE, COLORADO 80035
GEOHERMAL BRANCH
CI
TUSCARORA - NEVADA
Soil Geochemistry
Source: AMAX Survey, 1979 4-80



15' R 51 E 10' R 52 E 05' R 53 E Lines V, IX 116° 00' 30' 41° 25'

PRELIMINARY COPY

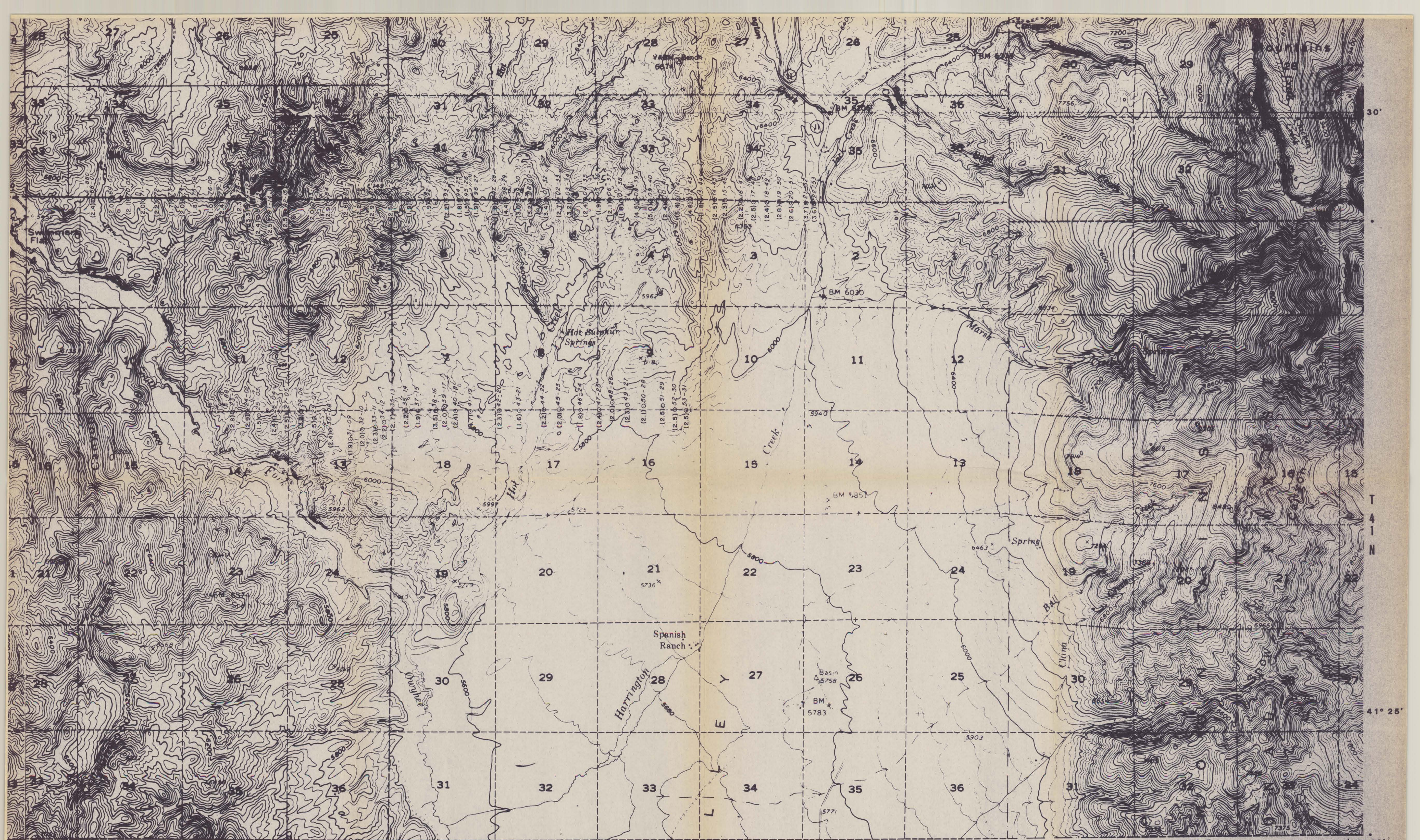
AMAX EXPLORATION, INC.
AMAX EXPLORATION, INC. 1100 WEST 84TH AVENUE, DENVER, COLORADO 80202

GEOTHERMAL BRANCH

F

TUSCARORA - NEVADA
 Soil Geochemistry

Source: AMAX Survey, 1979 4-80



15° R 51 E 10° R 52 E 05° R 53 E Lines VII, IX 41° 25' 16" 00'

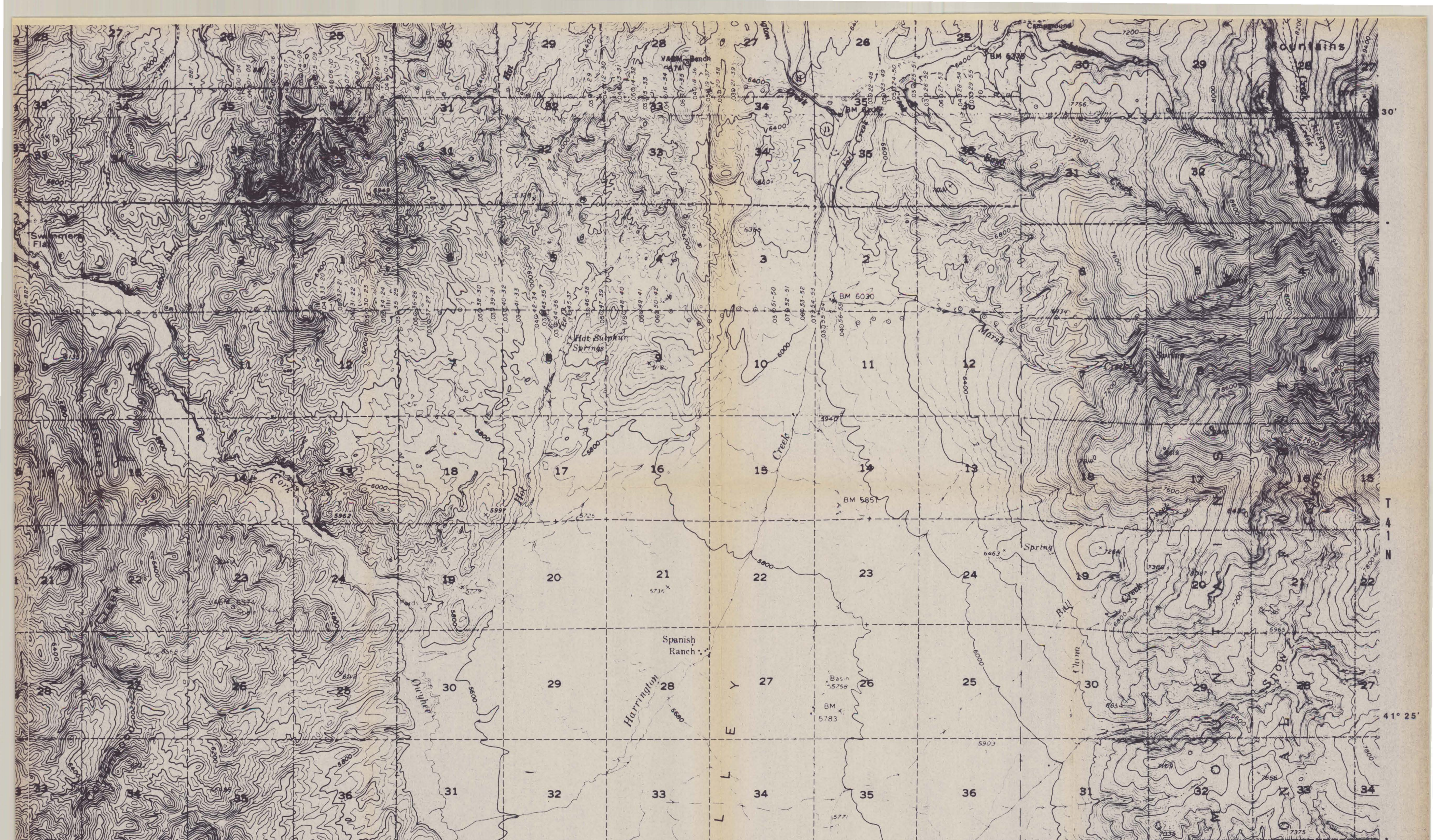
PRELIMINARY COPY

AMAX EXPLORATION, INC.
1710 WEST 40TH AVENUE • DENVER, COLORADO 80202

GEO THERMAL BRANCH

Fe
TUSCARORA - NEVADA
 Soil Geochemistry

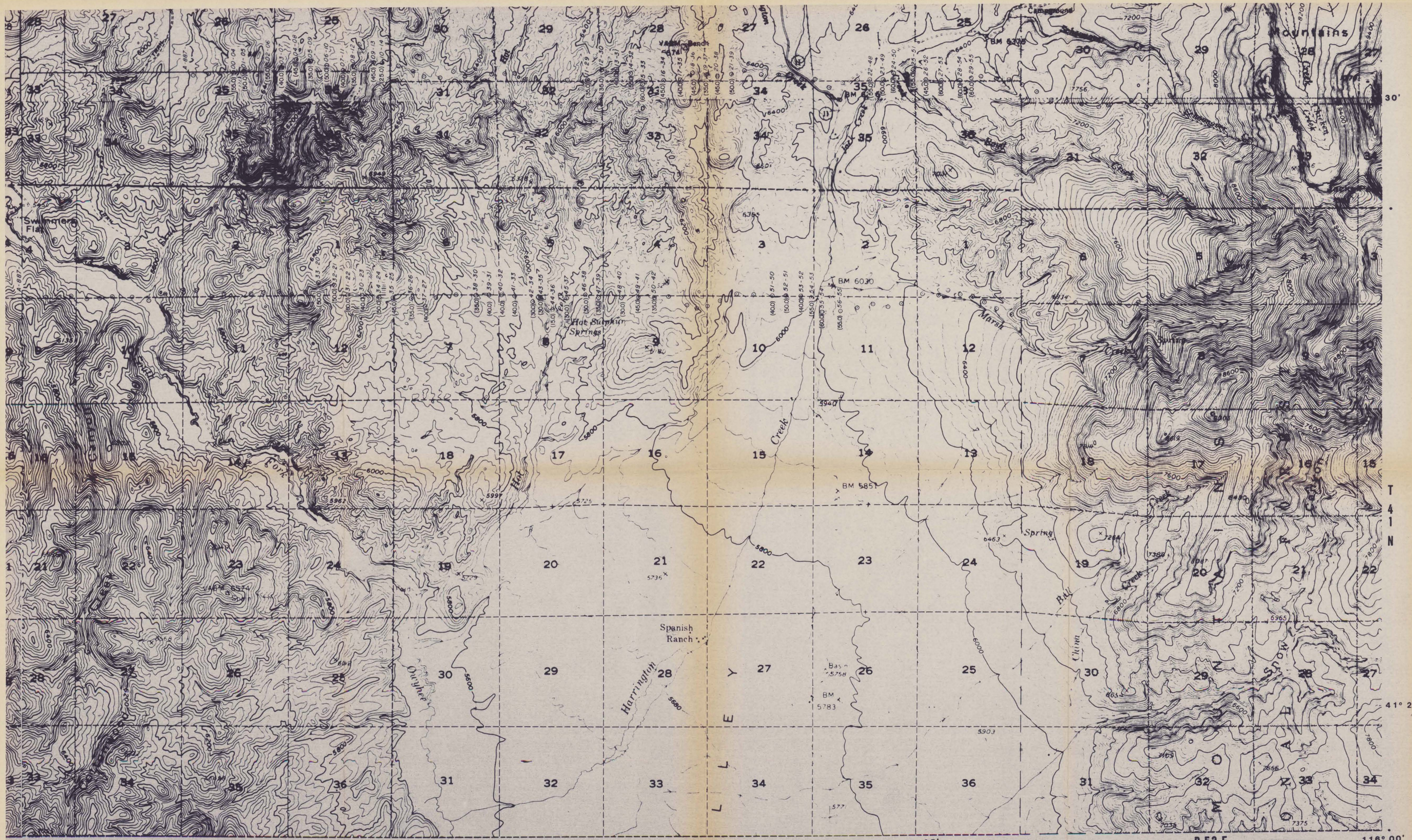
Source: AMAX Survey, 1979 3-10-80



15' R 51 E 10' R 52 E 05' R 53 E Lines V, IX 116° 00'

PRELIMINARY COPY

AMAX EXPLORATION, INC.
100 WEST 84TH AVENUE, AMARILLO, TEXAS 79106
GEOHERMAL BRANCH
Hg
TUSCARORA - NEVADA
Soil Geochemistry
Source: AMAX Survey, 1973



PRELIMINARY COPY

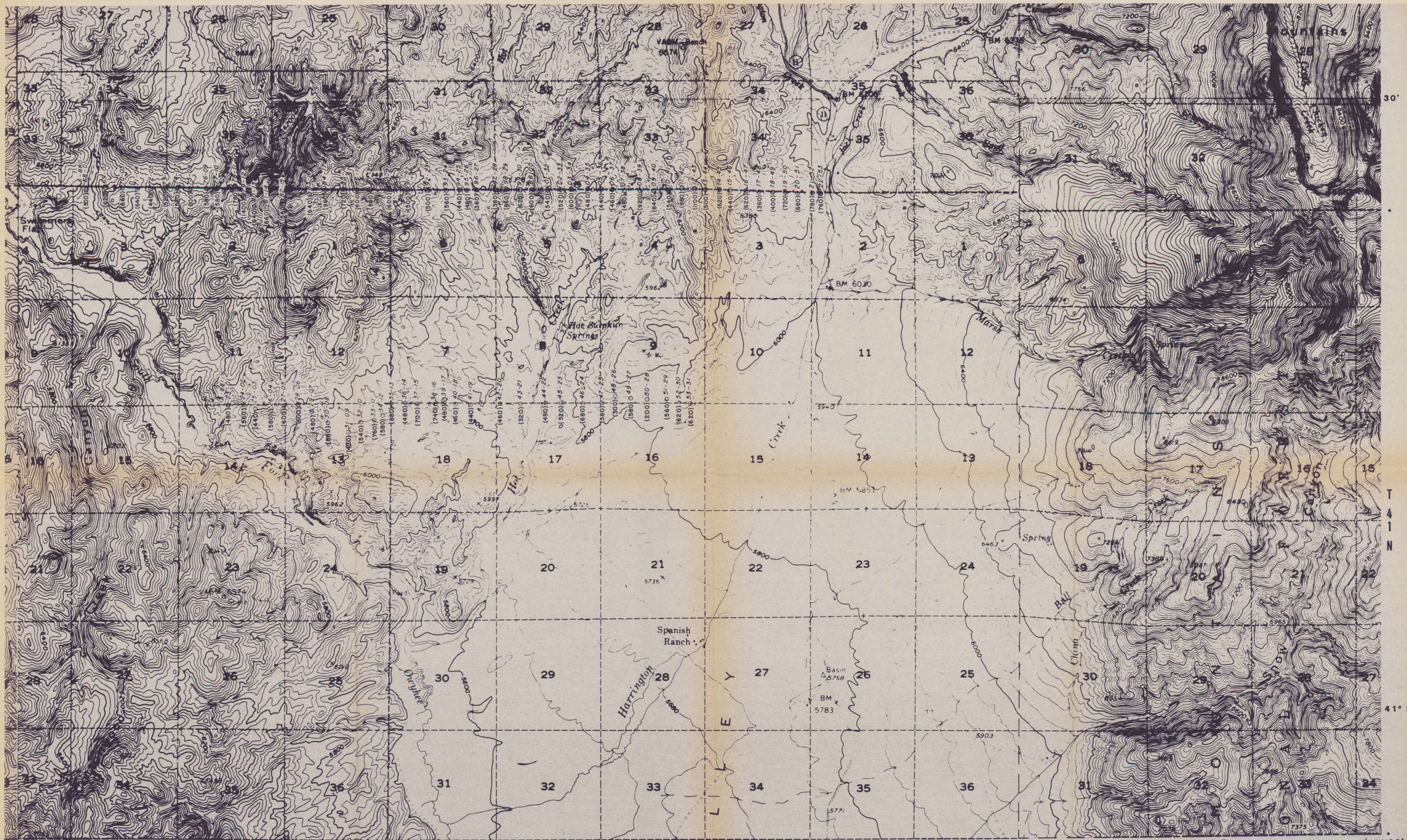
AMAX EXPLORATION, INC.
 THE WEST-SOUTH-WEST WHAT NEIGH. CO. (AMAX) HELLS

GEOTHERMAL BRANCH

LI

TUSCARORA - NEVADA
 Soil Geochemistry

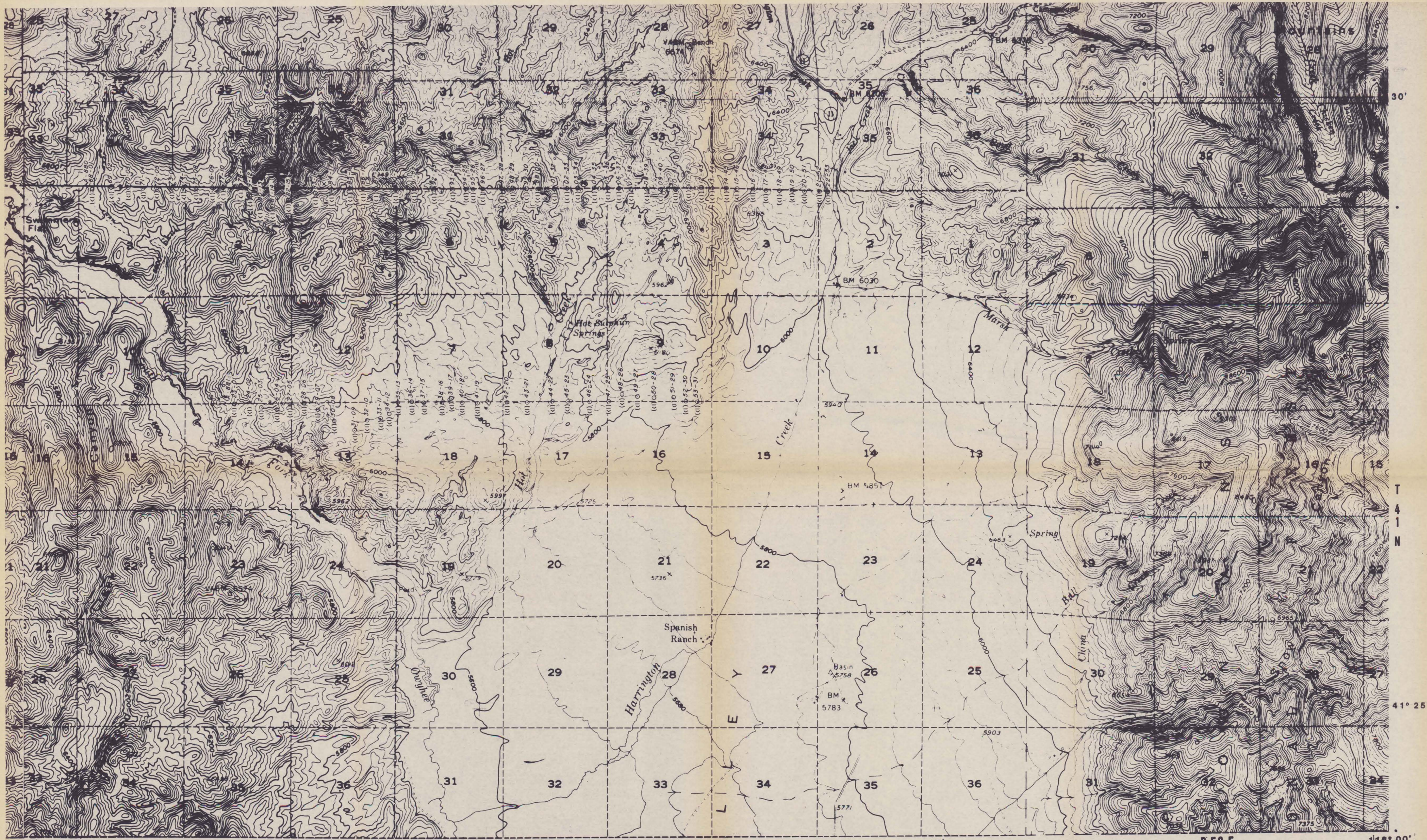
Source: AMAX Survey, 1979 4-80



15° R 51 E 10° R 52 E 05° R 53 E Lines VII, IX 41° 00'

PRELIMINARY COPY

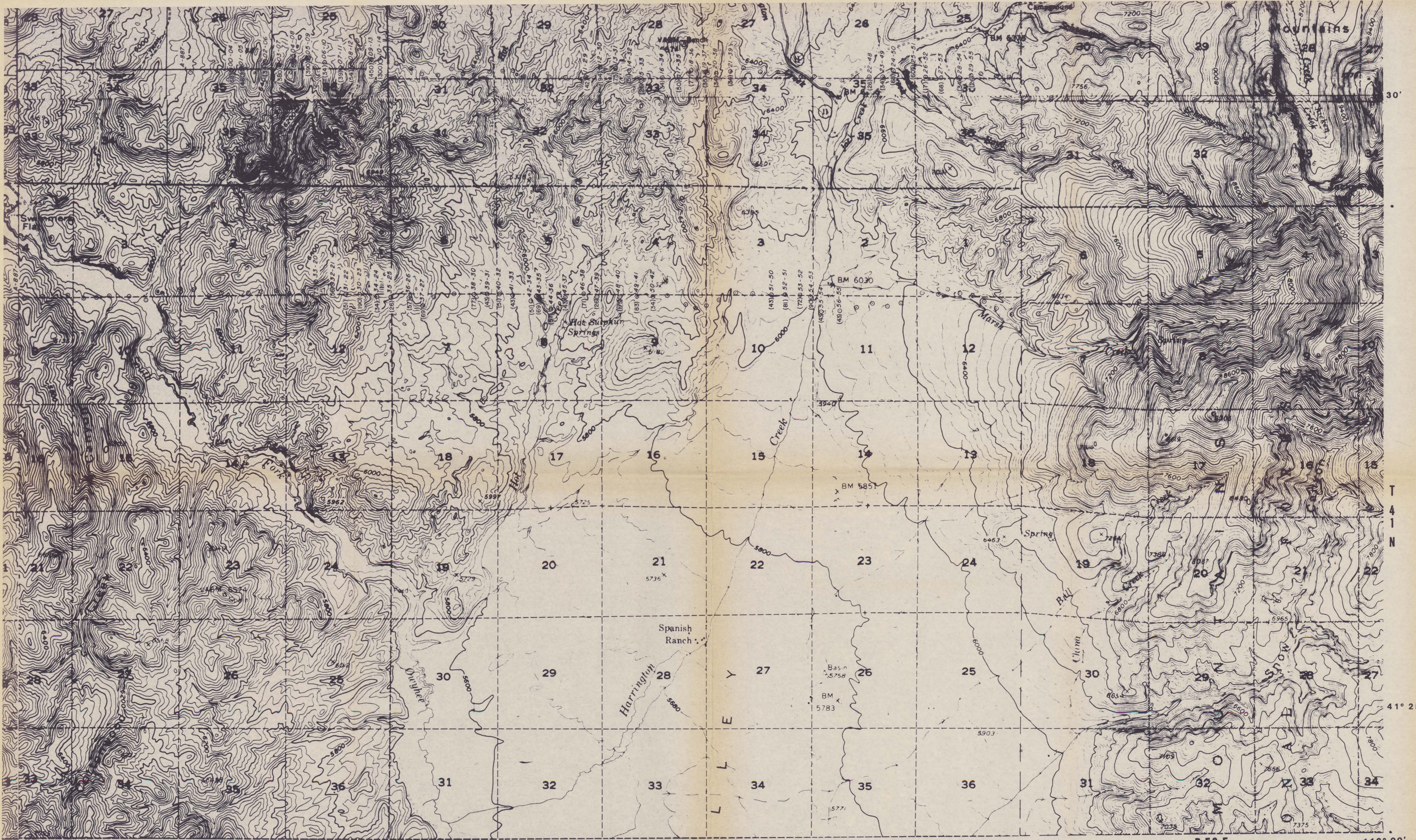
AMAX EXPLORATION, INC.
GEOHERMAL BRANCH
Mn
TUSCARORA - NEVADA
Soil Geochemistry
Source: AMAX Survey, 1979 3-10-80



15' R 51 E 10' R 52 E 05' R 53 E 41° 25' 41° 00'

PRELIMINARY COPY

AMAX EXPLORATION, INC.
 GEOTHERMAL BRANCH
 Mo
TUSCARORA - NEVADA
 Soil Geochemistry
 Source: AMAX Survey, 1979 3-10-80



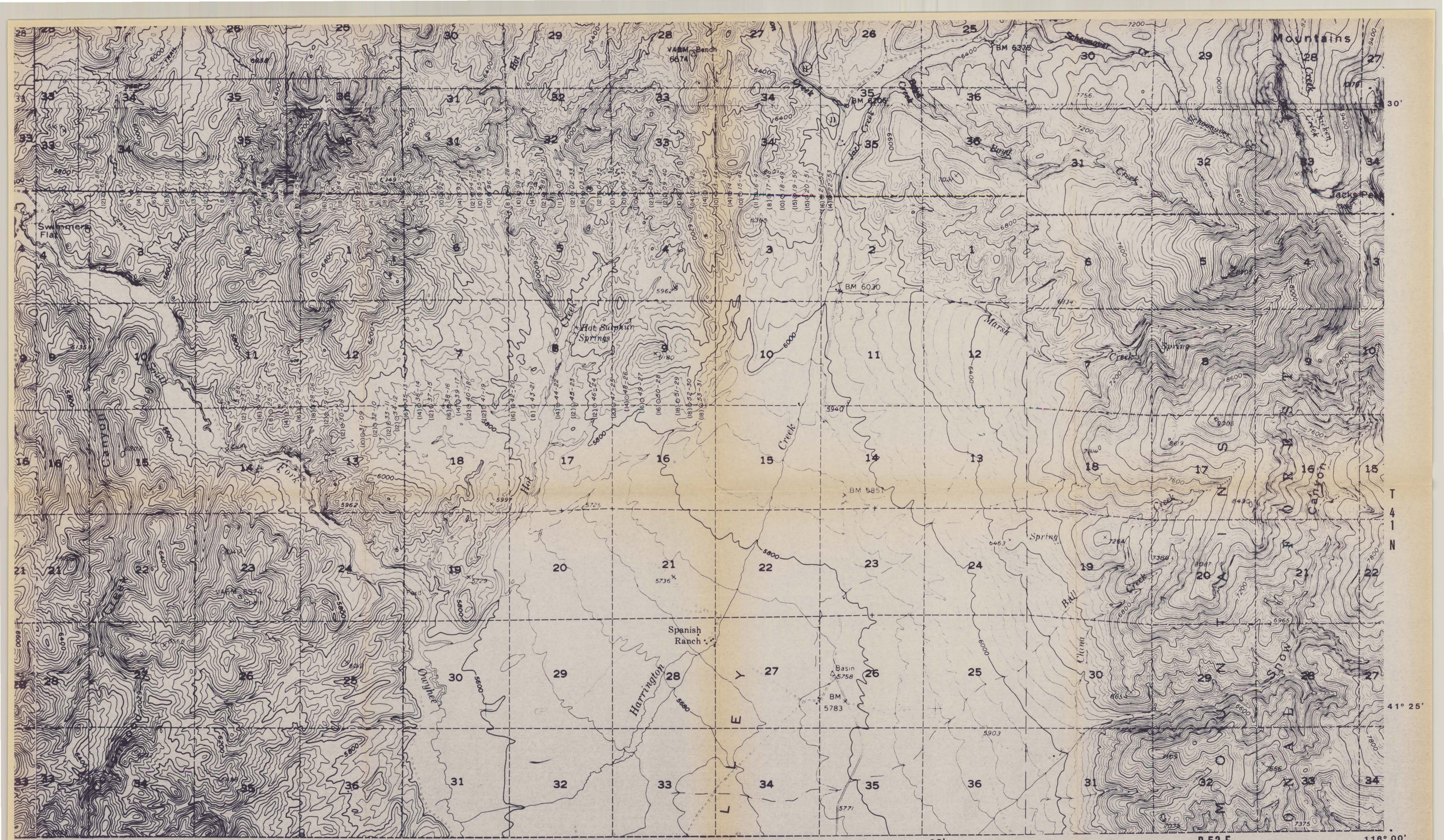
15' R 51 E 10' R 52 E 05' R 53 E 116° 00' 41° 25'

PRELIMINARY
COPY

AMAX EXPLORATION, INC.
1700 WEST BETH AVENUE, ZAHARA, NEVADA 89048
GEO THERMAL BRANCH

NH₃
TUSCARORA - NEVADA
Soil Geochemistry

Source: AMAX Survey, 1979 4-80



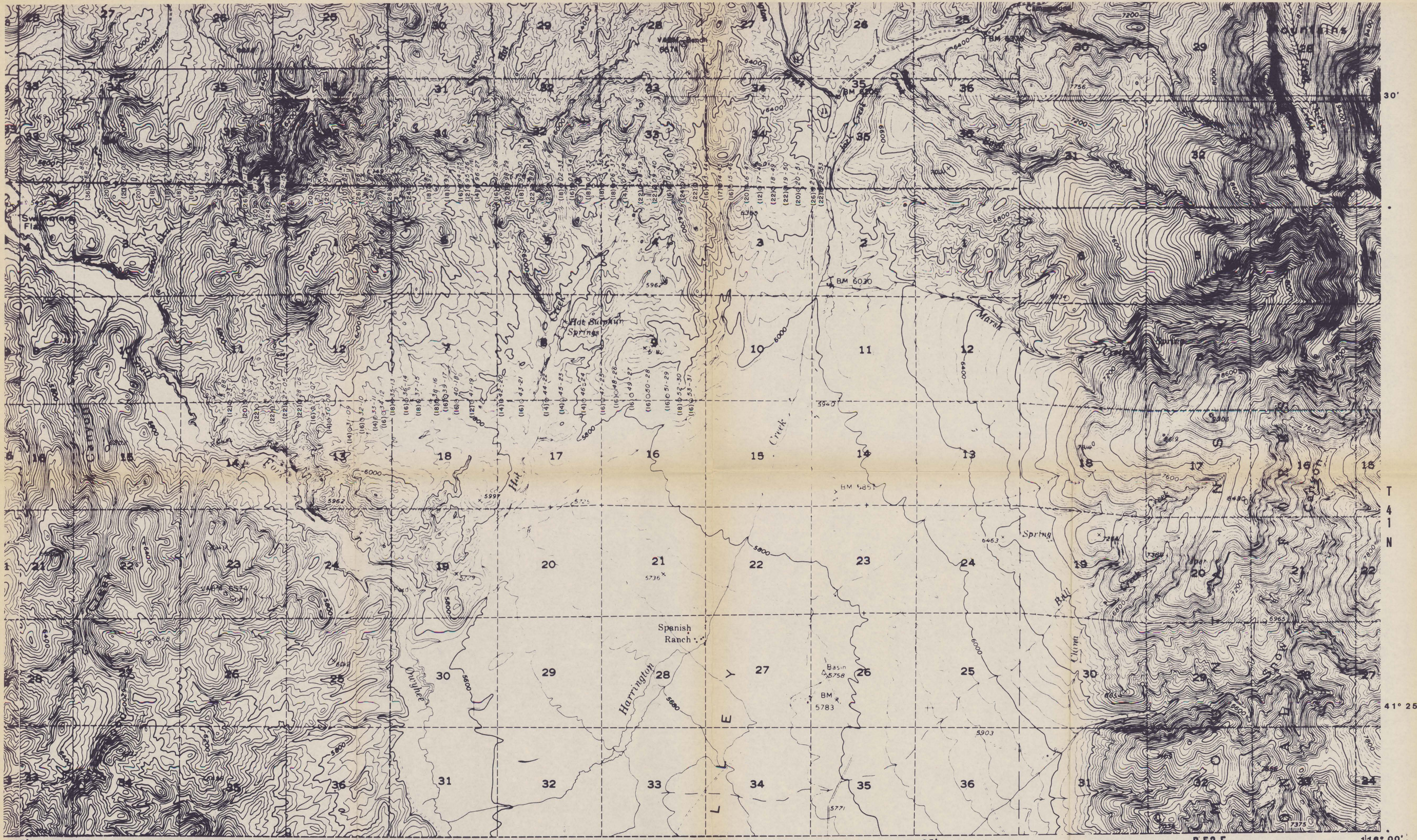
15° R 51 E 10° R 52 E 05° R 53 E Lines VII, IX 116° 00' 41° 25'

PRELIMINARY COPY

AMAX EXPLORATION, INC.
1000 EAST 10TH AVENUE, SUITE 1000, DENVER, CO 80202
GEOTHERMAL BRANCH

Ni
TUSCARORA - NEVADA
Soil Geochemistry

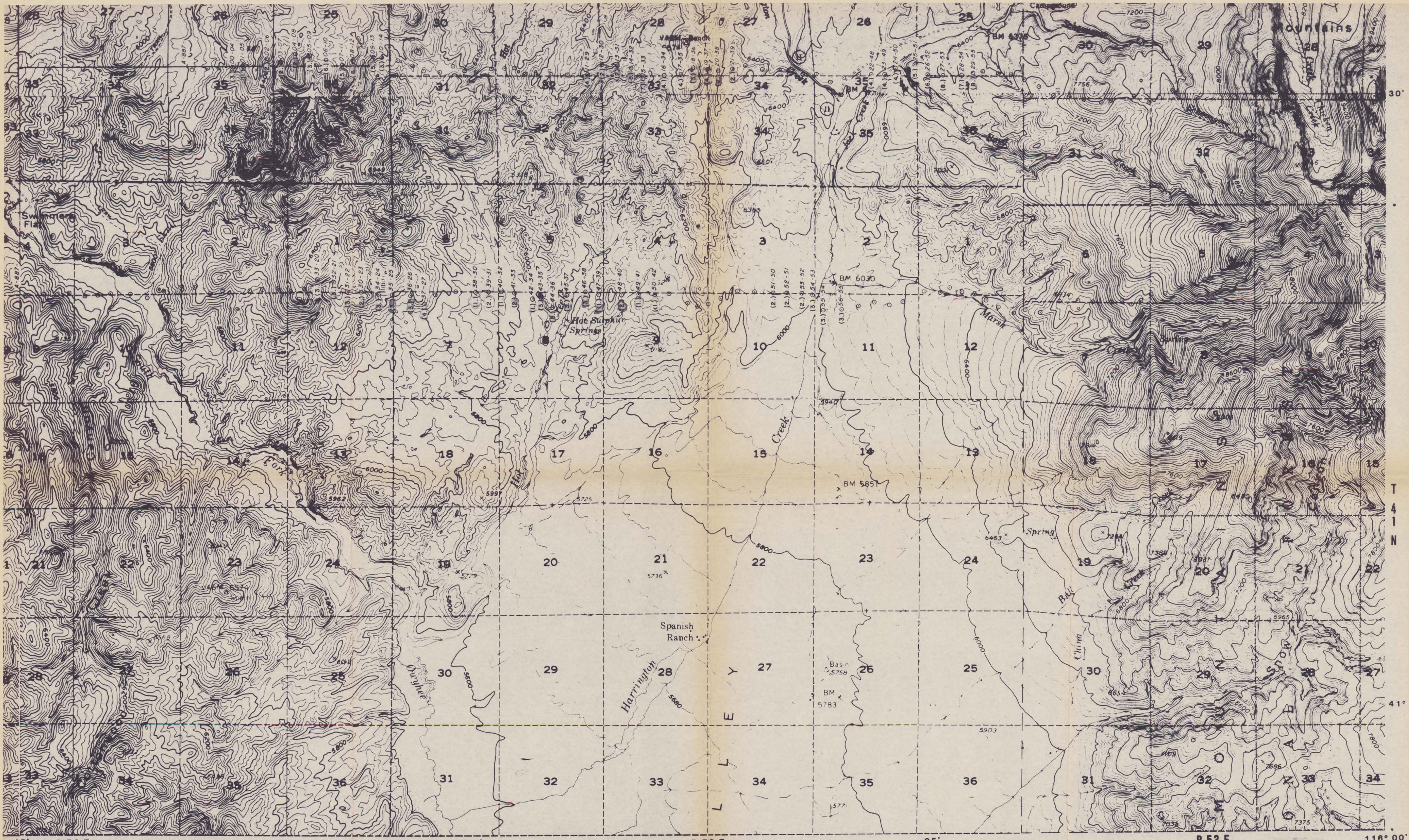
Source: AMAX Survey, 1979 3-10-80



15' R 51 E 10' R 52 E 05' R 53 E Lines VII, IX 41° 25' 41° 00'

PRELIMINARY COPY

| |
|--|
| AMAX EXPLORATION, INC. 1100 WEST BATH AVENUE, SUITE 100 DENVER, COLORADO 80202 |
| GEOTHERMAL BRANCH |
| Pb TUSCARORA - NEVADA Soil Geochemistry |
| Source: AMAX Survey, 1979 3-10-80 |



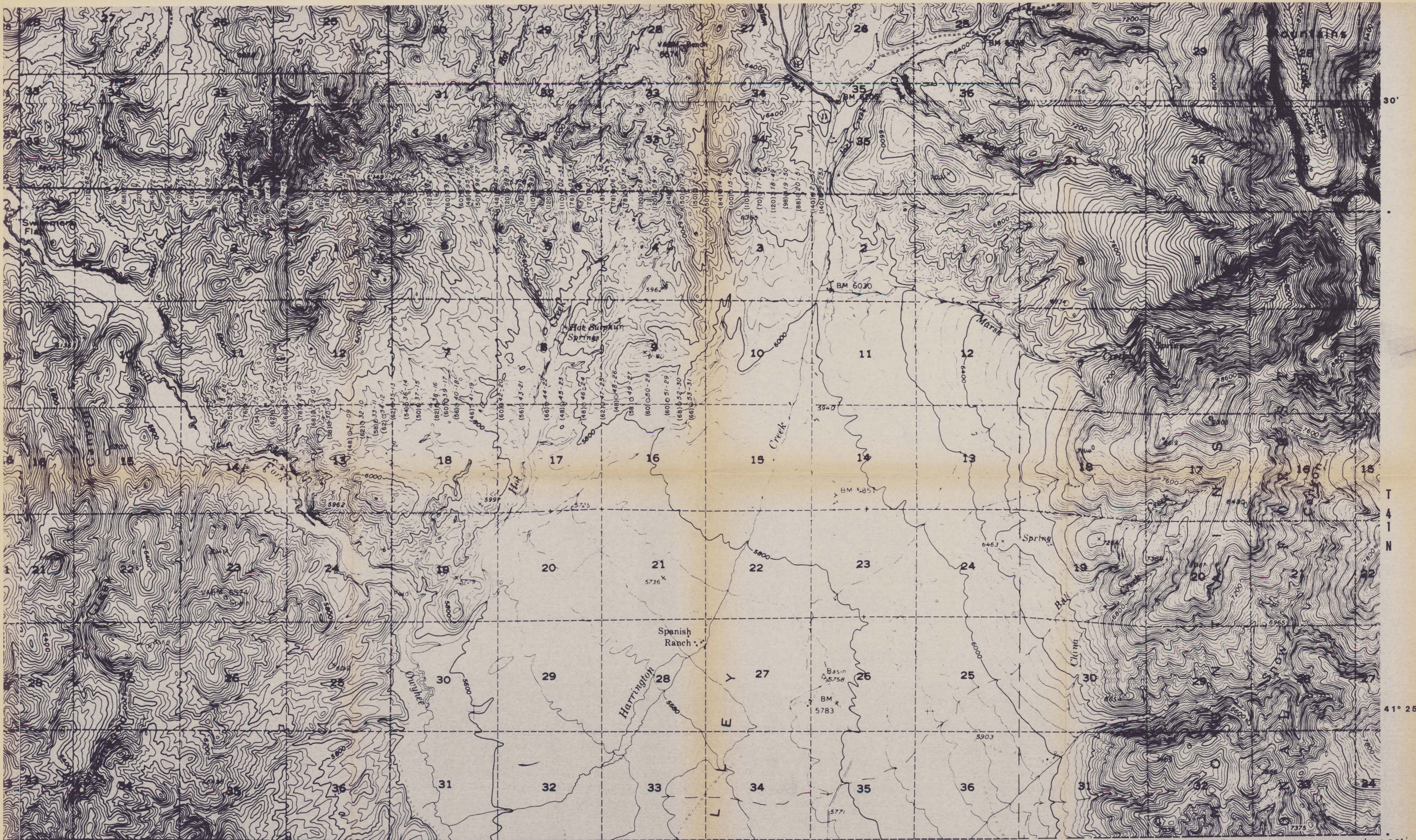
PRELIMINARY
COPY

AMAX EXPLORATION, INC.
1100 WEST 84TH AVENUE, WHEAT RIDGE, COLORADO 80033

GEOTHERMAL BRANCH

Sb
TUSCARORA - NEVADA
Soil Geochemistry

Source: AMAX Survey, 1979 4-80



15° R 51 E 10° R 52 E 05° R 53 E 116° 00'

PRELIMINARY COPY

AMAX EXPLORATION, INC.
GEOHERMAL BRANCH
Zn
TUSCARORA - NEVADA
Soil Geochemistry
Source: AMAX Survey, 1979 3-10-80