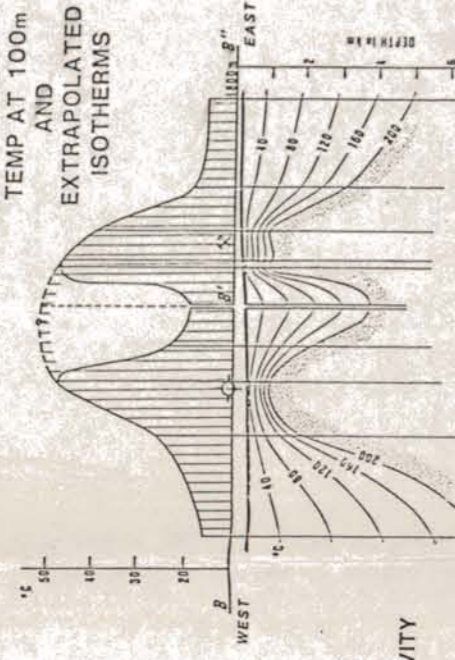
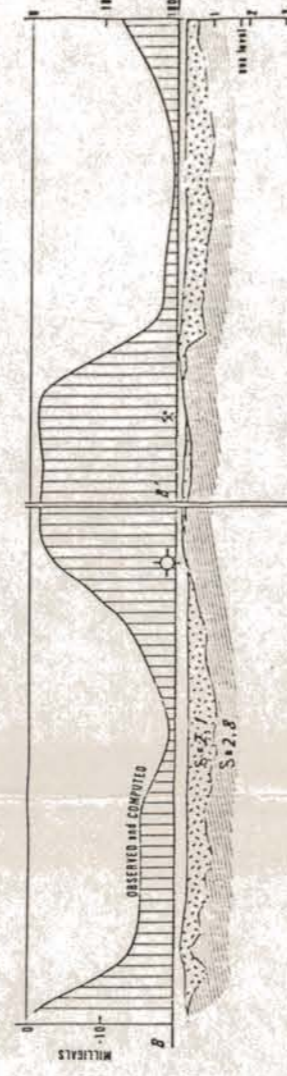


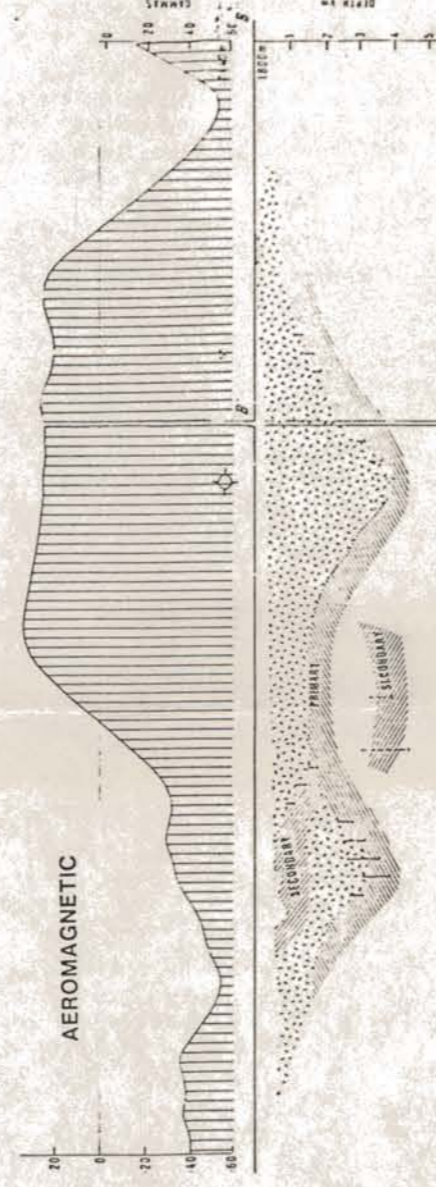
B-B'-B''
TEMP AT 100m
AND
EXTRAPOLATED
ISOTHERMS



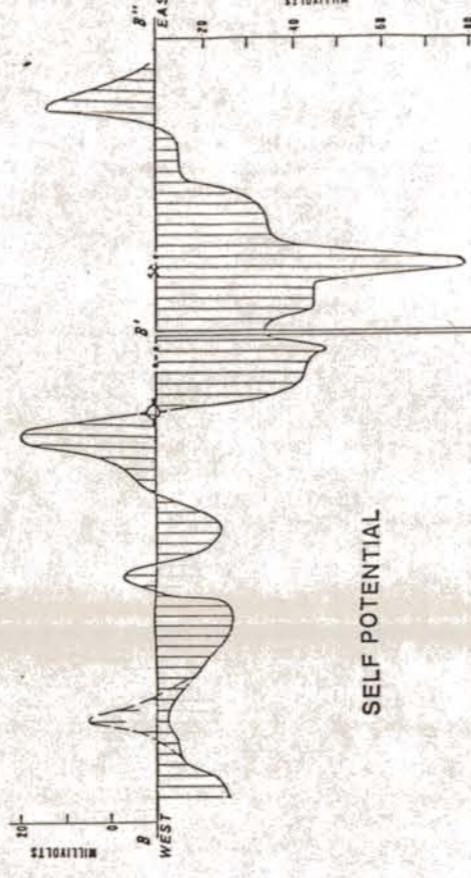
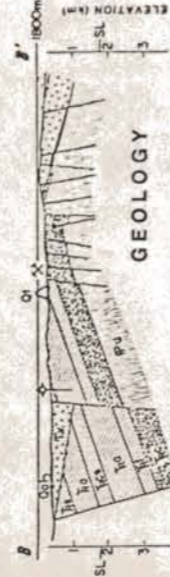
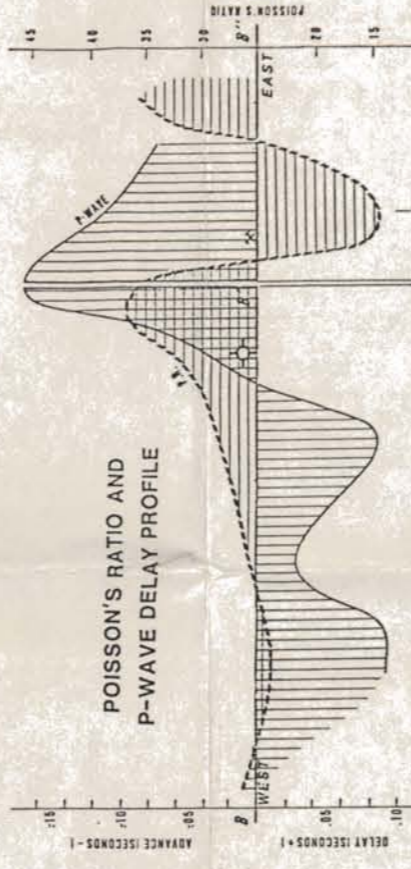
RESIDUAL GRAVITY



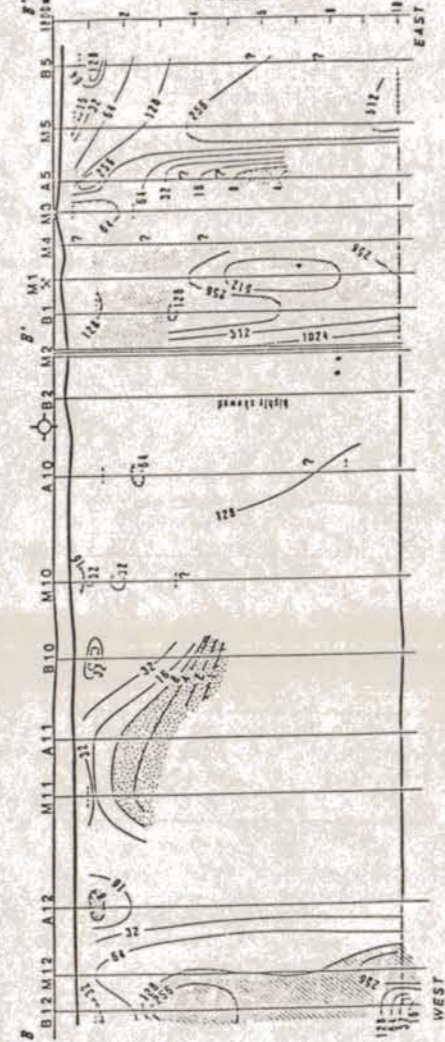
AEROMAGNETIC



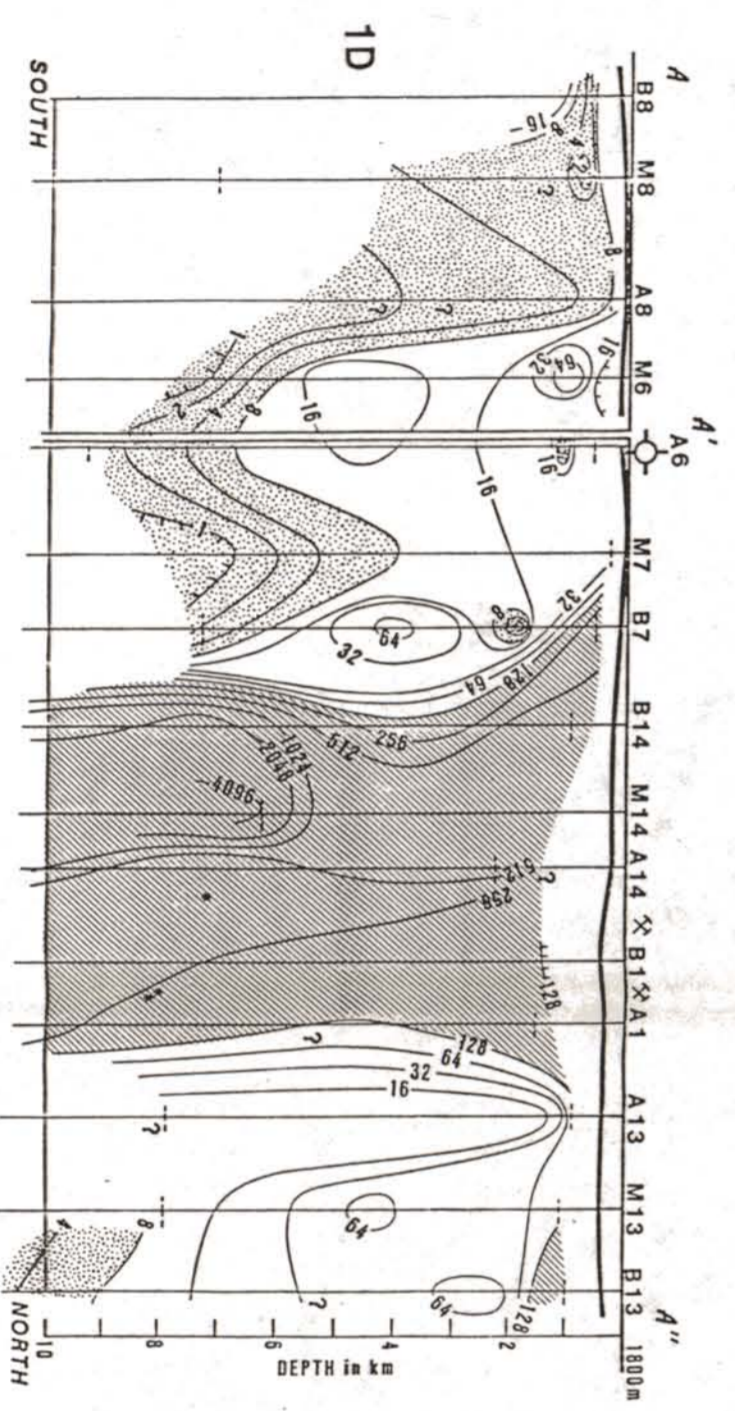
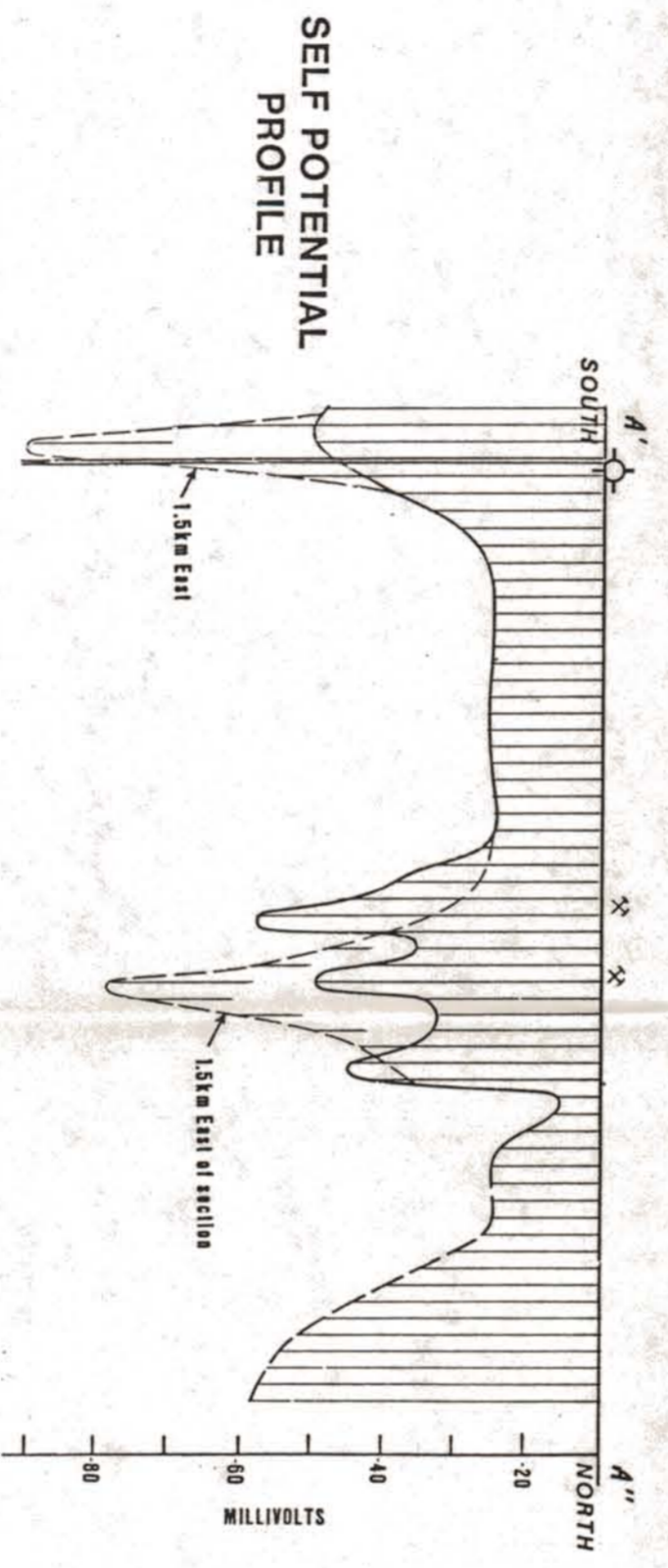
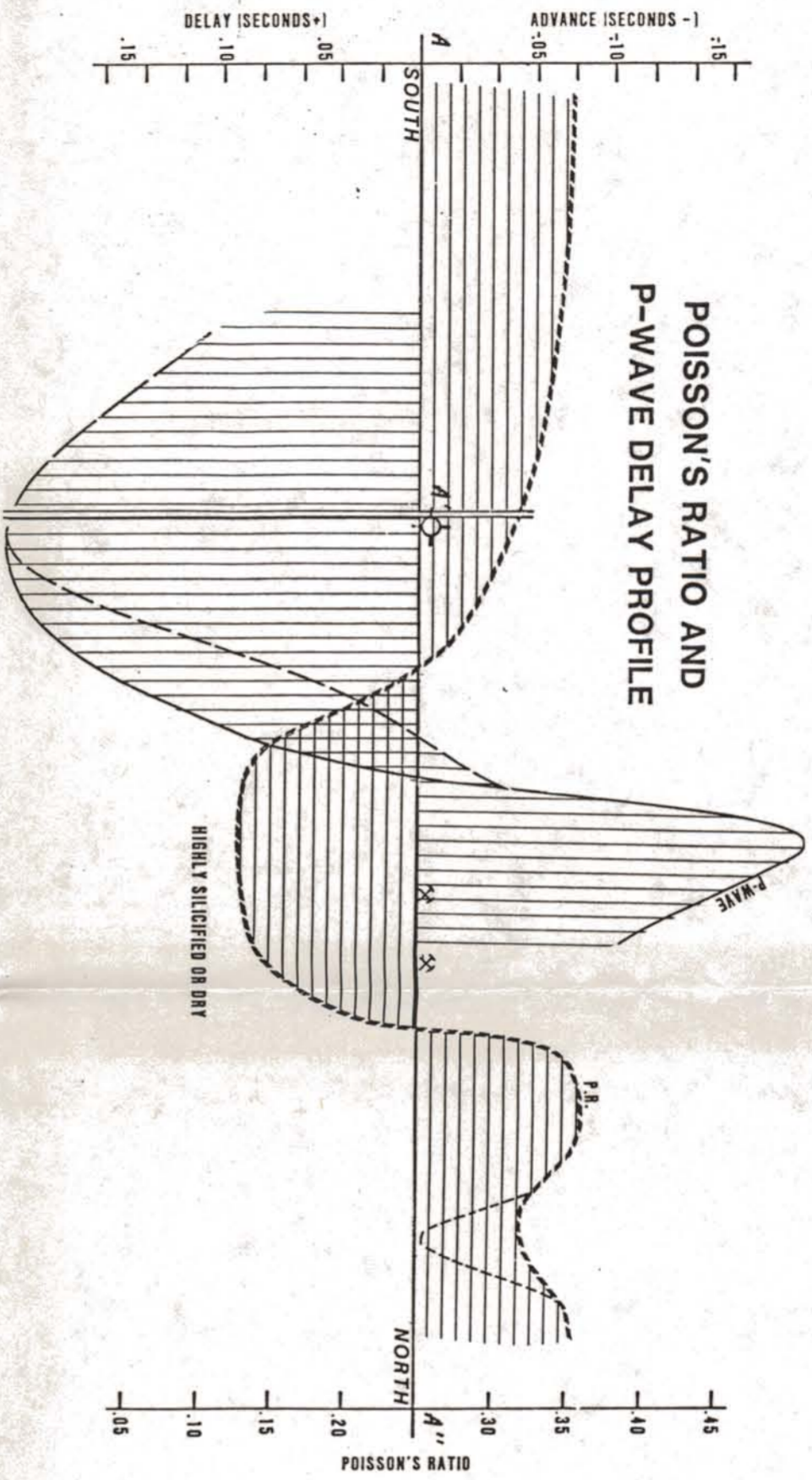
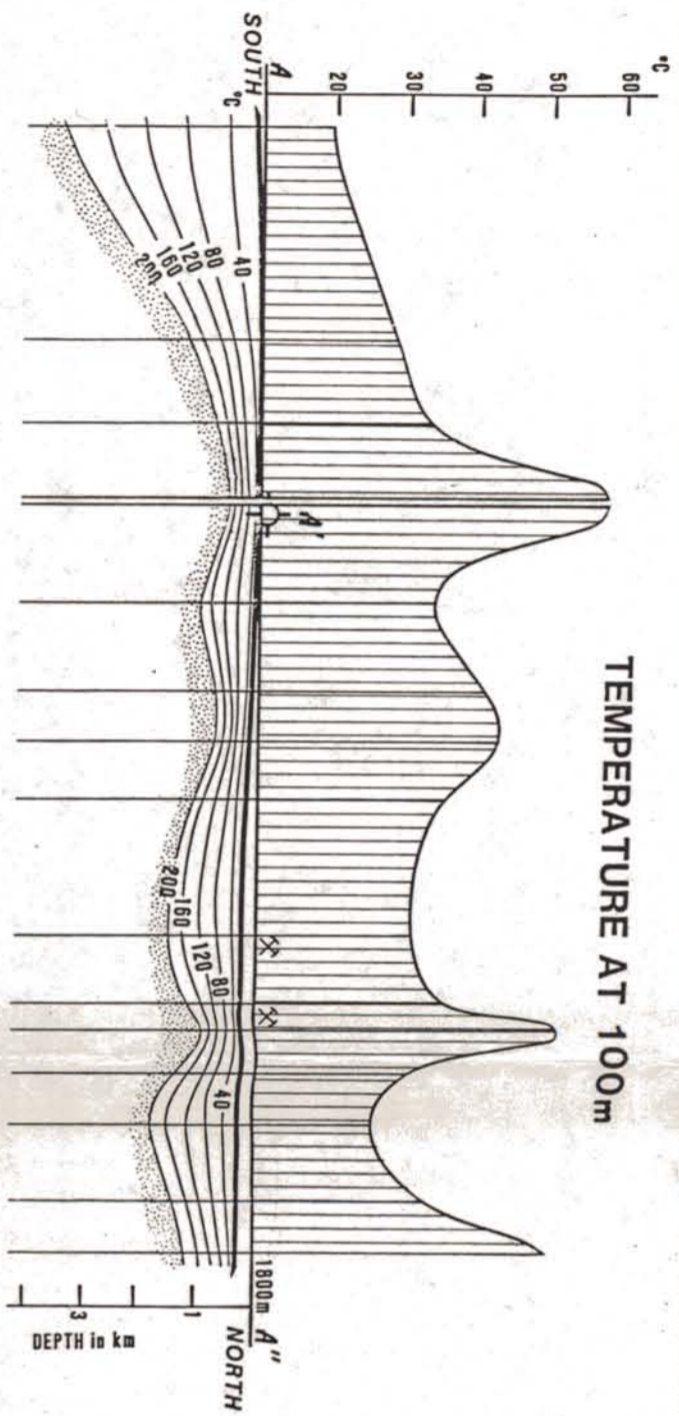
POISSON'S RATIO AND
P-WAVE DELAY PROFILE



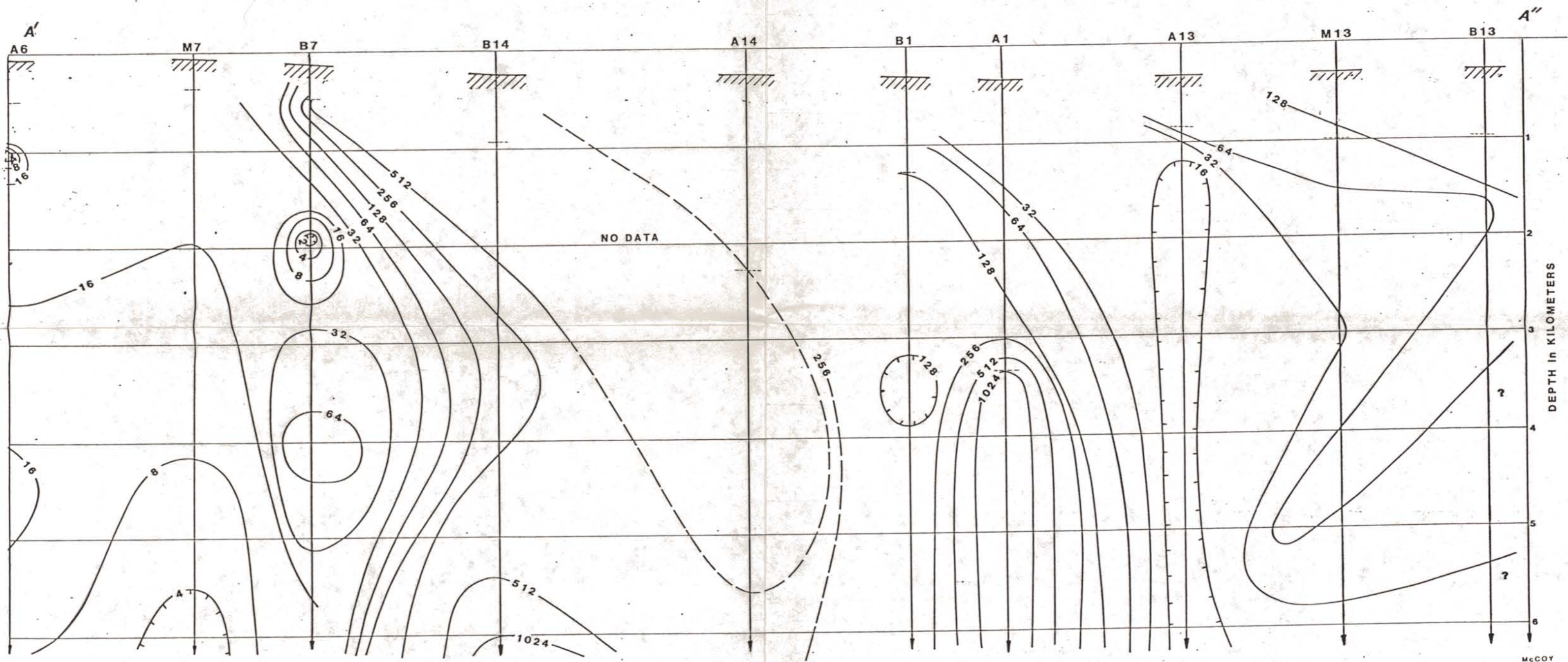
SELF POTENTIAL

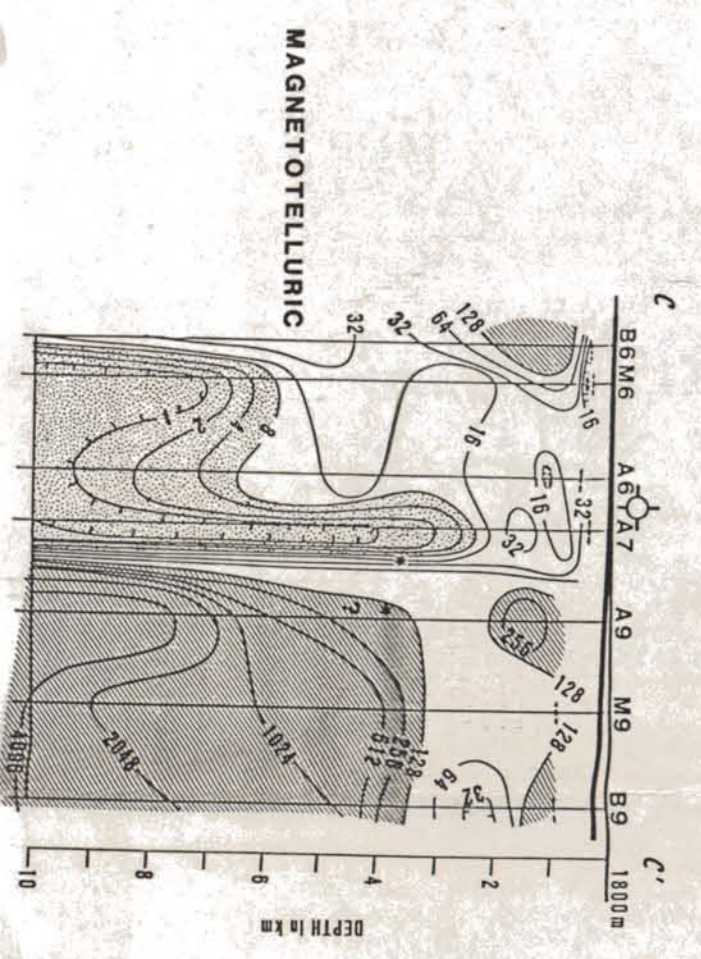
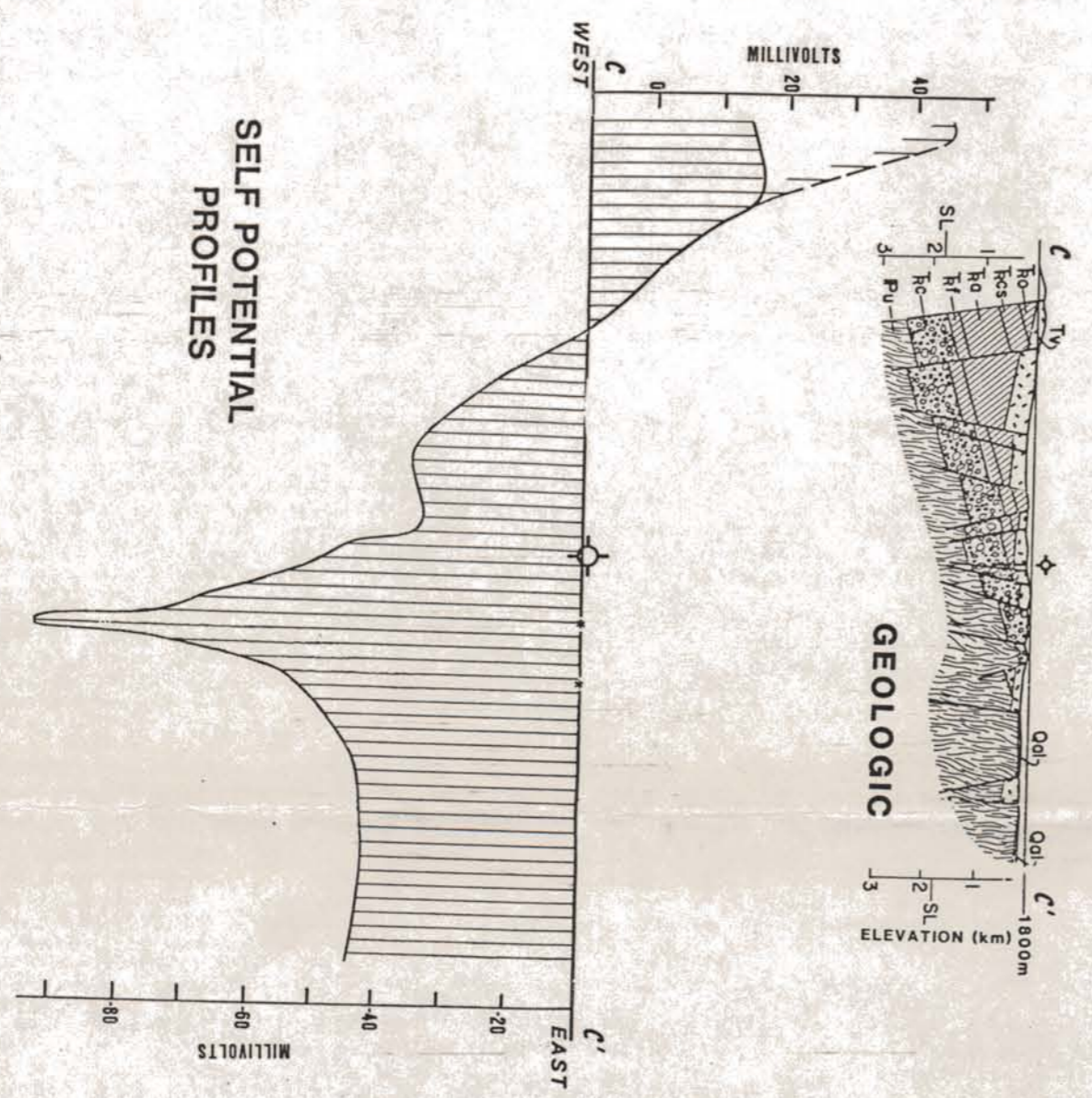
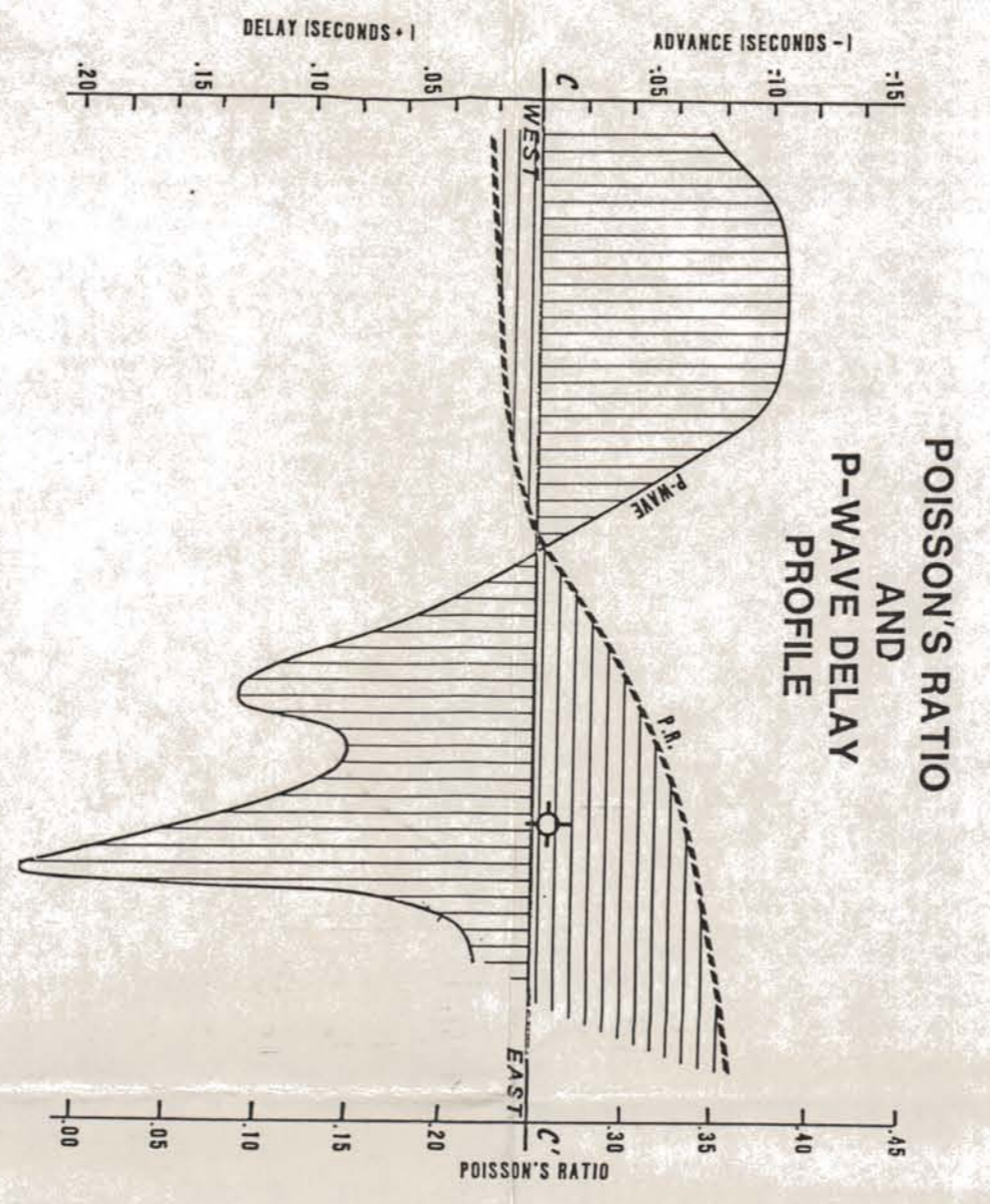
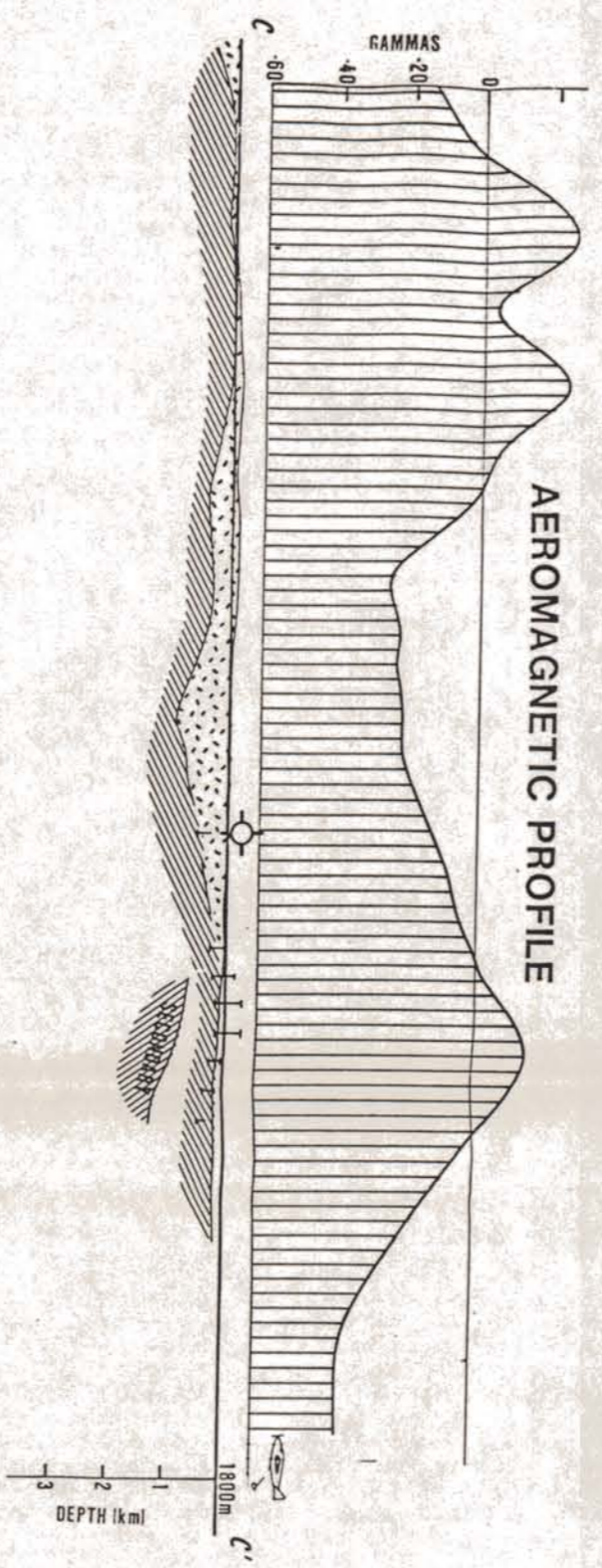
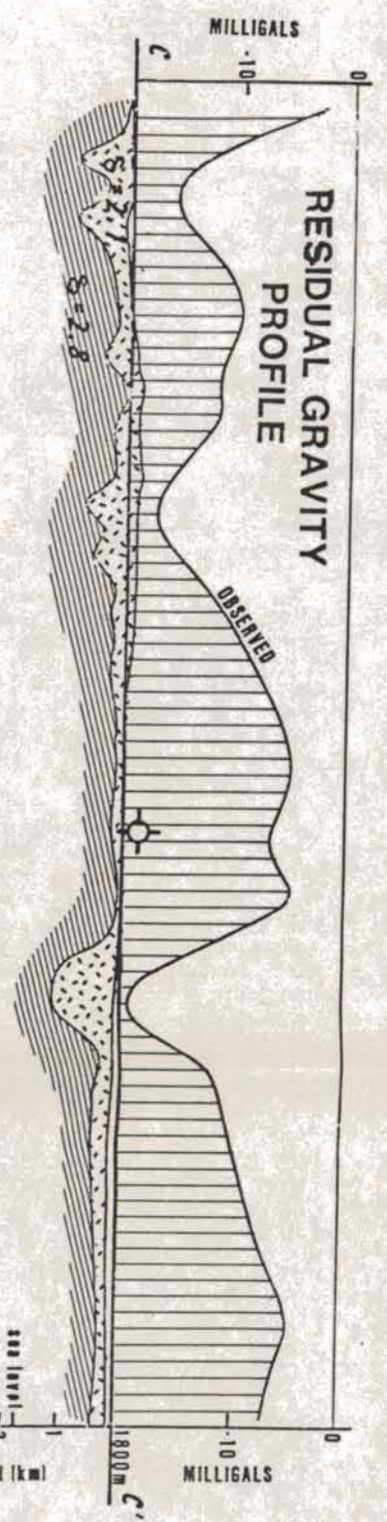
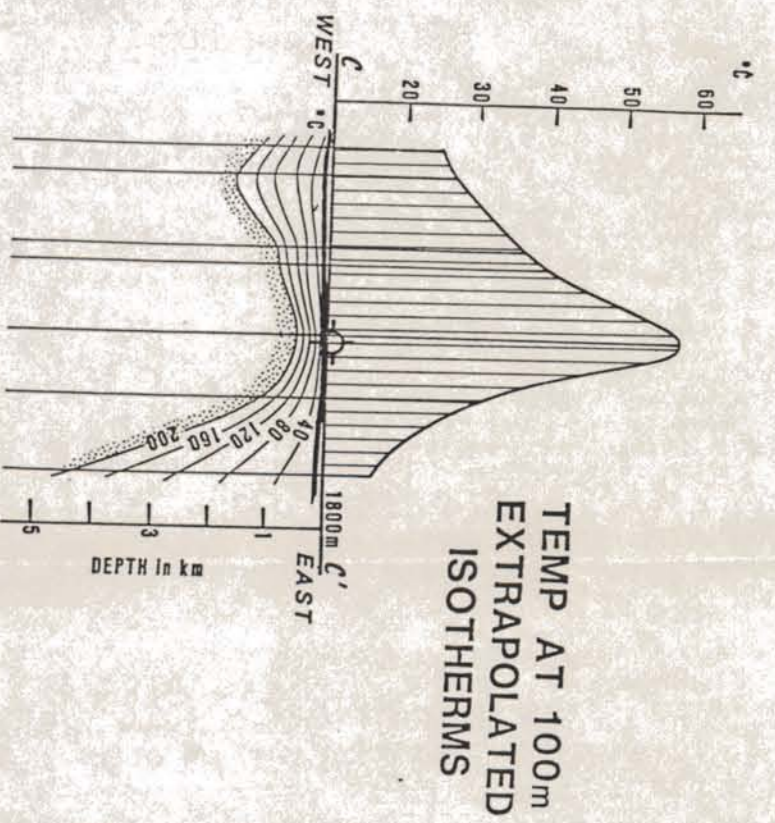


MAGNETOTELLURIC

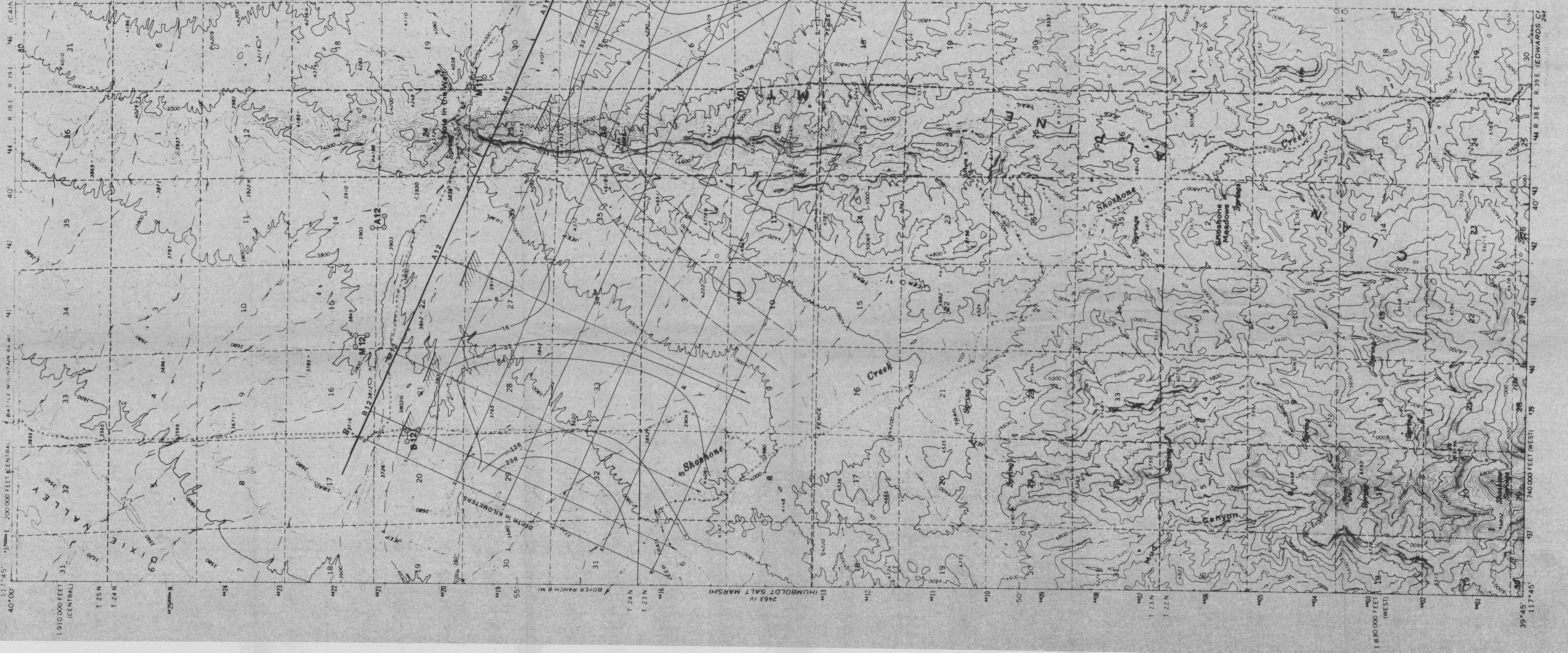


MAGNETOTELLURIC

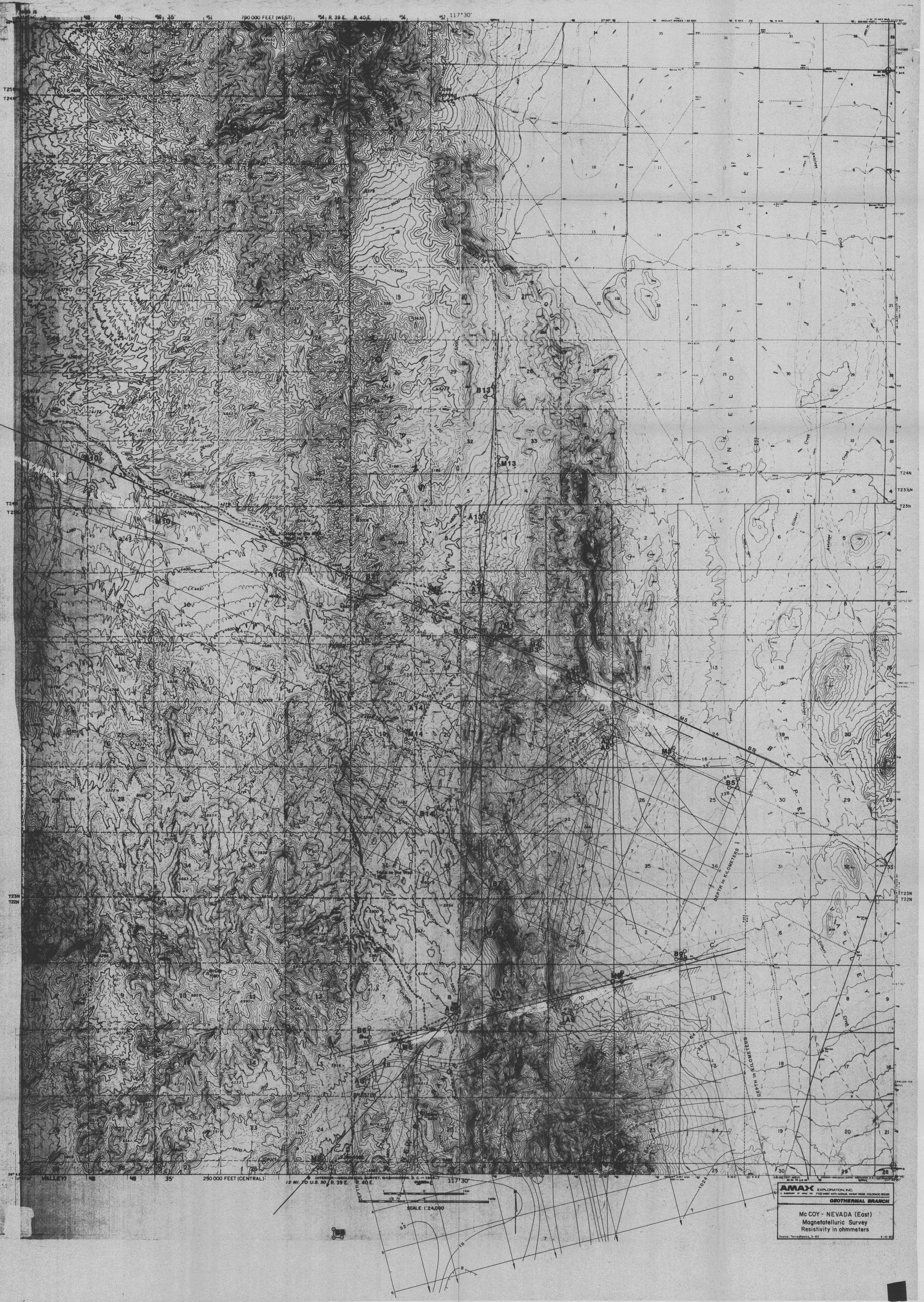




117° 45' 40" 00" WEST (CENTRAL) 44° 40' 00" NORTH (CENTRAL)



117° 45' 39" 00" WEST (CENTRAL) 44° 40' 00" NORTH (CENTRAL)



AMAX EXPLORATION, INC.
 A DIVISION OF AMAX INC. 7700 WEST 40TH AVENUE, WEST BOULE, COLORADO 80520
GEO THERMAL BRANCH
 Mc COY - NEVADA (East)
 Magnetotelluric Survey
 Resistivity in ohm-meters
 Source: Topographic 3-82 4-1-82